

Nash's First ADDITION

New 5-room modern house, all complete, with bath, toilet, woodshed, shade trees, 50x100 lot; all for one thousand dollars; a small payment down, then \$15 a month.

Choice Lots

50x75 feet, 15-foot alley, water to each lot; sidewalks laid and nice shade trees on every lot—\$5 down and \$5 a month.

Acreage Lots

A half a block on the car line, in my addition; all laid off in lots at acreage prices; water and sidewalk at each lot. Call and see the owner on the grounds.

Joe Nash

Take Mount Scott car; get off at Nash's First Addition.

Don't Miss These Bargains

IMPROVED

- \$1500—6 rooms and bath, with 2 lots, near Southern Pacific car shops; small cash payment, balance in installments.
- \$1000—6-room cottage and lot, near Williams avenue and Skidmore; easy terms.
- \$1500—4-room cottage, 11th and College streets; one-third cash, balance in installments.

Unimproved Snaps

- \$1150—Lot, Williams ave., near Woodstock; bargain.
- \$ 750—2 lots, Feurer's Addition, Milwaukee and Frederick streets.
- \$ 850—2 lots, in Woodlawn.
- \$ 125—2 lots in Highland Park.

Call and see my list for other Bargains

A. H. BIRRELL

202-3 McKay Bldg., 3d & Stark

This Beautiful Farm

WELL WORTH \$12,000—WILL SELL TODAY FOR \$9,000.

240 ACRES—Near Hillsboro; over 100 acres clear; good buildings; very large barn; cost \$1,500; good orchard; finest kind of soil; close to R. R. station, and also milk condenser; plenty of running water; a fine place.

Charleson & Staub
243 1/2 MORRISON STREET.

FARMS AND CITY PROPERTY

- 120 ACRES—1 1/2 miles from La Camas, Wash.; 30 acres cultivated; house, barn, orchard—\$1500.
- 80 ACRES—Good land, fenced; 16 acres cultivated; nice new house, 6 rooms; woodshed 16x25, rustic and painted; watered by springs and brook; house fronts on two good roads; corners at place; splendid community; 10 1/2 miles from Oregon City; planked and graveled road nearly all way; bargain—\$1,750.
- 18 ACRES—Fenced; house, barn, orchard, part cultivated; fronts on good road, near Forest Grove, 1 mile to postoffice, store, school; good neighborhood—only \$850.
- 10 ACRES of land, fronts on Willamette river; convenient to electric line; nice new house, barn; some fruit and berries; would trade for home in Portland.
- 160 ACRES—All good rolling hill land, on good road; 16 acres in cultivation, besides grass land; excellent fences, comfortable house, fine barn, good orchard, good outgrange for stock; convenient to Forest Grove, Or.; a cheap place—\$1,900.
- 240-ACRE improved farm in Linn county, 1 1/2 miles from R. R. station—\$2,350.
- 200 ACRES—Improved farm in Marion county, 1 1/2 miles from R. R. station; sell or trade for stock of merchandise—\$6,500.
- 40 ACRES—All good land, near Ridgefield, Wash.; 20 acres well fenced; 5 acres in good orchard—\$900.
- 15 1/2 ACRES—Part improved; 1 mile from Columbia river; level road; some choice bottom land; about 3,000,000 feet timber.
- 20 ACRES—7 1/2 miles east of city; fine level road; about half cultivated; orchard; good 6-room plastered house, frame barn; would trade for estate will sell cheap.

CITY PROPERTY.

- 6-ROOM new, modern, up-to-date house, corner lot in Sunnyside.
- 7-ROOM new, modern house, ready for occupancy, on East Alder st., near Twelfth.
- TWO GOOD HOUSES, on West Side; rental value \$28 per month.
- 3-ROOM new cottage, near East Ankeny, car barn; easy terms—\$1,400.
- 5-ROOM new cottage, corner lot, near Ankeny car barn; easy terms—\$1,900.
- 6-ROOM new house, 100x100 ground, on Mount Tabor; easy terms—\$1,000.
- 6-ROOM house in Upper Albina; rented at \$18 per month; will exchange equally for a small suburban home or sell cheap.

HENKLE & BAKER
217 Abington Bldg., Portland, Or.

HOMES ON EASY TERMS

- \$2350 Lot 32x67, on 23d st., near York st., and close to the Lewis and Clark exposition grounds, with new and modern house of 5 rooms and bath.
- \$2300 Corner lot, 65x65, on Morris st., 12 minutes ride from Washington st., by either Upper Albina or Woodlawn car lines, with new house of 6 rooms and bath.
- \$2850 Lot 40x100, in Holladay Park, 1 block from Broadway car line, with modern cottage of 6 rooms and bath; excellently built and with all improvements; street improved; house connected with sewer; cement sidewalk.

The above houses can be purchased on easy terms at cash prices.

For further particulars apply to

Rountree & Diamond
241 Stark St., Cor. Second

HARTMAN, THOMPSON & POWERS 3 CHAMBER OF COMMERCE

A large list of new modern homes of various designs in different locations at cash prices. Terms equivalent to about 10 per cent down and monthly rentals. Our installment houses cannot be duplicated in quality or price and our contracts are the most liberal offered.

If after looking over our lists you find nothing to suit, we will build to your order, about 10 per cent down, monthly rentals. A few bargains from our lists:

WEST SIDE

- 5 ROOMS, ROOSEVELT ST. \$1,950
- 6 ROOMS, TWENTY-THIRD ST. \$2,350
- 6 ROOMS, TWENTY-FIRST ST. \$2,500
- 6 ROOMS, JOHNSON ST. \$2,500
- 6 ROOMS, JOHNSON ST. \$2,750

EAST SIDE

- 6 ROOMS, HILLMOORE ST. \$2,700
- 5 ROOMS, SKIDMORE ST. \$1,900
- 7 ROOMS, COUCE STREET \$2,400
- 6 ROOMS, RODNEY AVE. \$2,200
- 5 ROOMS, FURLAND ADD. \$1,400
- 5 ROOMS, FURLAND ADD. \$1,100

We will build houses on a very desirable and beautiful location in South Portland, installment payments.

EAST 16th STREET NEW MODERN HOMES

- SIX ROOMS, 50x100 \$2,650
- SIX ROOMS, 50x100 \$2,500
- SIX ROOMS, 50x100 \$2,500
- SIX ROOMS, 50x100 \$2,500
- SIX ROOMS, 50x100 \$2,500

LATEST DESIGNS OF ARCHITECTURE, A-1 PLUMBING, PIPED FOR FURNACE AND GAS. ALL MODERN CONVENIENCES. ON TEN-MINUTE SERVICE CAR LINE. TWELVE MINUTES' RIDE FROM THIRD AND MORRISON STREETS.

10 per cent down

SPECIAL BARGAINS

Houses

- 5-ROOM new house, on East 28th and Oregon streets. This is a real bargain. Price \$1,500
- 2 HOUSES—One of 6 rooms and one of 5 rooms, on corner East 16th and Main streets. Price \$4,000
- 7-ROOM new house with 100x100 feet of ground, cor. East 25th and Division streets. Price \$2,750

Residence Lots

We have them in all parts of the city, and some are to be had at very low figures.

Acre Tracts

On electric car line; good, pure water and fruit on each acre; 20 minutes from First and Washington streets. Cash or installments.

Knapp & Mackey Room 2 Chamber of Commerce.

\$400 to \$700
Buys a Fine Lot in

Bronaugh's Addition East 24th Street

Which runs from East Everett street to the Sandy road, and lies on both sides of it. Which is graded, sewer and sidewalks are laid.

Wakefield, Fries & Co. 229 STARK STREET.

City View Park

15 minutes ride from First and Alder streets, 5-cent fare.

Streets graded and sidewalks laid.

Bull Run water.

Electric Light and Telephone Service.

Lots \$150 to \$300, \$25 down, balance \$10 per month

SHARKEY & MORROW
208 Alisky Bldg.

ST. JOHNS PARK

Portland's most beautiful and slightly suburban. Choicest residence district in ST. JOHNS. Two blocks from car line, and 5 minutes walk from the now famous

St. Johns Water Front

Where Portland's great industrial movement is taking place. Unsurpassed view of the beautiful Willamette river and four snow-capped mountains. Lots only \$200 and upward—\$5 down and \$5 a month. Better than a savings bank. Investigate and see if your judgment does not agree with ours—that values here will double in one year. Prices will be advanced soon.

See CHEPMAN & KING, Gen. Agents, ST. JOHNS, OR., or

M. L. HOLBROOK OWNER 723 Chamber of Commerce Bldg.

Paying Investments

HOUSES

- 5-ROOM new house; fairly close in; to trade for farm or sell on easy terms, for \$1,600—cost of building.
- 6-ROOM new house; built of best material; new barn and 3 lots, 60x100 each, on Mt. Scott car line—\$1,650, \$500 down; less with one lot.
- 4-ROOM house in Brooklyn; walking distance, near car—\$100, half down.
- FOUR 50x100 LOTS—Fine building site, sloping cityward; on good car line, in full view of entire city; water on ground; sell together or separate—\$150 each; small payment down.

FARMS

- 20 ACRES—13 in cultivation; part beaverdam; creek, good trout fishing; 3 acres bearing orchard, plenty small fruits; 4-room house, fine large barn; 15 miles from Portland—\$750.
- 40 ACRES—All fenced; 13 in cultivation; running water; house; bearing orchard; 17 miles from Portland; trade for city property or sell for \$1,600.
- 30 ACRES—All fenced; 11 in cultivation; 2 good springs; lies rolling; 4 miles from Hillsboro—only \$1,500; half down.

ROOMING HOUSES

- 20 rooms, flat; rent \$50 \$2,000
- 24 " lodging; rent \$15. \$ 600
- 15 " fine location; rent \$42.50. \$ 650
- 16 " well worth the price. \$ 700
- 10 " well furnished; boarding. \$ 600
- 23 " Very fine; rent \$5. \$2,000
- 8 " nearly new furniture. \$ 400
- 7 " neat cottage; rent \$18. \$ 300
- 16 " west of City Hall. \$1,300
- 38 " very central; extra good. \$5,000

STORES

- GROCERY—Carries general stock; 5 living rooms—\$800, or will invoice.
- GROCERY—Near fair grounds, including buildings—\$3,700; part down.
- GROCERY—4 nice living rooms; everything at invoice, or lump—\$1,500.
- COFFEE HOUSE—On busy street; everything first-class; lease—\$550.
- CIGAR STORE—A good one; pay you to see it—\$250.

Houses, Rooms, Stores and Farms rented
Columbia Real Estate & Trust Co.
234 1/2 Morrison St. Corner Second.

For the next few days we will sell lots in

VERNON KERN PARK

On Payments of 5 Per Cent Down and 3 Per Cent a Month.

This the most healthful and slightly addition in the City of Portland

IS NOW READY

with graded streets, sidewalks laid, and water pipes connected with the city mains.

Take Vernon car at 1st and Washington.

Potter & Chapin

SOLE AGENTS
246 Stark St.

LAND FOR SALE

- 10 ACRES—Cleared and fenced, 5 miles east—\$1,900.
- 10 ACRES—In brush, 1/4 mile Rockwood; bargain—\$550.
- SPECIAL OPPORTUNITY to erect a lumber mill—Tract of 285 acres of fine timber on Eagle Creek; four miles O. W. P. R. R.; excellent water power on land; the land after timber is taken off is worth the money we ask for it—\$4,500.
- 25 ACRES—One-half cleared and fenced, near Lents. This tract can be sold \$50 per acre less than land adjoining. See this tract.
- 3 1/2 ACRES—Close to Montavilla, on R. R.—\$450.
- Prettyman's Add., lots 2, 5 and 6, block 5, each 300
- Third Electric Add., lot 1, blk. 4 175
- First Electric Add., lot 2, block 2 200
- Linwood Add., lots 10 and 11, block 2, each 200
- Linwood Add., lots 7, 8 and 9, block 1, each 200
- Tobacco, lots 2 and 4, blk. 3, each 80
- Sunnyside Add., lots 8 and 9, block 50, each 200
- Tabardale, lot 1, block 1 200
- Peninsular Add., No. 2, lot 10, block 10 50
- Peninsular Add., No. 3, lots 26, 27, 28, 29, 30 and 31, blk. 29, each 50

Is the highest land between Portland and Lents. The land looks as level as a barn floor, but water flows from it both ways.

Twenty-minute car service night and morning and still better service sure to follow.

If you buy in Kern Park you will have good neighbors.

First builders in Kern Park get free water for a time.

The 14-foot alleys will be found a great convenience.

PAY RENT TO YOURSELF

LOTS 40x100—\$75 to \$125

Payable in \$3.00 Monthly Payments.

It may surprise you, but at these prices the water main will be brought past your lot.

BUY A LOT IN,

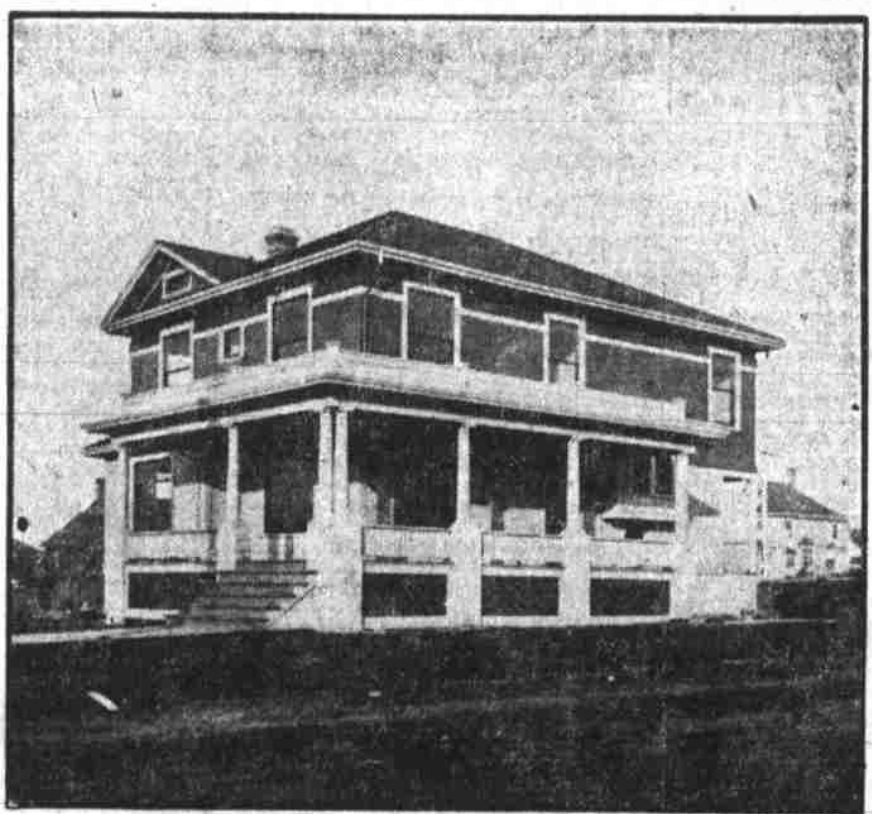
KERN PARK

FOR SALE BY

Sycamore Real Estate Co.

205 1/2 Morrison St., Phone, Main 493. Office open week day evenings until 8 o'clock.

J. L. Wells & Co.
94 GRAND AVE. PHONE 385.



The houses shown here are HOMES of Portland people, who would rather buy a lot, build a home and pay as they can, than continue to pay rent, month after month, and never own a home. CATE & POWELL, 701 Chamber of Commerce, City, will sell you a lot in either the Hawthorne First or Ladd's Addition, erect you a home after plans selected by yourself and let you pay for it as you can, or as you would pay rent. Anyone who has become tired of paying rent and wants to become independent of the "grasping landlord" should investigate this offer at once. Building houses in these two additions on the installment plan will be a thing of the past in the near future. This is an opportunity that seldom presents itself more than once in a lifetime. Act now. Secure yourself and family a home and be free from the monthly visits of the landlord. See CATE & POWELL, 701 Chamber of Commerce, for full particulars

