

METROPOLIS OF STATE OF OREGON

PICTURESQUE PORTLAND WITH ENVIRONMENT SURPASSINGLY PLEASANT—A MODERN CITY IN EVERY RESPECT, WITH A GREAT FUTURE BEFORE HER.

The surroundings of Portland are surpassingly beautiful. In mountains and valleys, rivers and waterfalls, green fields, flowers and perpetual snow the other cities of the Northwest may vie with but none equals her in immediate environment. Particularly picturesque is the magnificent view from the heights of the city, and it is doubtful that there is a site in the entire Northwest more favored by nature in this regard than the spot chosen for the Lewis and Clark exposition of 1905.

Portland is a city of at least 123,000 population. These figures are given it by the city directory census completed during September last. In 1902 the number of inhabitants was approximately 114,000, a growth of about 9,000 in a year. With this rate of increase it is considered probable that by the early spring of 1904 the city will have a population of 125,000, making Portland not only the metropolis of the state of Oregon, but the leading city of the Pacific Northwest. This growth has been sure and substantial.

Portland is a modern city in every respect. As it is known to the people of the entire East that there are no Indians here nearer than a long time away. Pioneer conditions passed away two decades ago. Portland, to mention her improvements briefly, has streets paved with asphalt and stone, a sewer system, electric lights and electric streetcars, beautiful driveways and parks, a salubrious climate and ice-cold water the year round from Mt. Hood from her own underground water works system costing approximately \$5,000,000. Among her natural attractions are boating, yachting and fishing, and within a few hours' travel of the city the plucky sportsman can find almost any kind of game he may want to tackle from the native and luscious grouse to elk, deer and as large specimens of bear as he may want to meet in the woods alone.

In amusements Portland ranks high. There are five theatres, playing through the season not only stock companies, but the best plays and players on the American stage. The largest and finest theatre is the Marquam Grand, and there are few more attractive playhouses than the Empire and the Baker, Cordray's and the Arcade, all of which, including the others, are financially successful. The night-theatre crowds are one of the noticeable features of Portland.

Moonlight and sunlight shine on three giant mountain peaks in plain sight of Portland. Mt. Hood, distinctively "Portland's mountain," is only 40 miles away, Mt. St. Helens 68 miles, and Mt. Rainier 110 miles distant. The peaks are from 11,000 to 14,500 feet high, are covered with snow the year round, and together with the Cascade or Coast range of mountains, of which they are conspicuous sentinels, afford some of the grandest scenery on the continent. The Columbia and Willamette rivers contiguous to Portland are beautiful streams and the scene of many excursions the year round. Though but a few feet above the level of the sea, Portland has towering above her the massive mountains and eternal snows.

The state of Oregon is unusually well governed. That has been a characteristic feature of her history from pioneer days down to the present time. It is the pioneer state of the Pacific Northwest and possesses an unsurpassed natural wealth in minerals, timber, agriculture and horticulture. The constitution made nearly half a century ago by the pioneers still obtains and is considered good. Democrats and Republicans have ruled, alternately, in the politics of the state, the latter party having been more often victorious in comparatively recent years. The present governor is a Democrat.

The state officers are the same that are provided for and elected in other states, with the usual boards and commissions of state institutions. The last

named are modern and up to date in every respect. The financial affairs of the state are in a highly satisfactory state. There are not outstanding bonds, and there is sufficient money in the treasury to pay all warrants. The total valuation of taxable property is about \$175,000,000, as compared with \$147,000,000 a year ago. It is understood, as usual, that these figures do not reach real values. The average state tax levy is 5.041-3 mills.

The population in Oregon in 1850 was 12,294. In 1902 it was approximately 520,000, and growing not only rapidly but steadily. The Indian tribes on the five remaining reservations in the state are rapidly passing away to the happy hunting-grounds. The reservations in Eastern Oregon are the Umatilla, near Pendleton, the largest and richest; the Klamath reservation and the Warm Springs reservations. In Western Oregon there are two, the Grand Ronde reservation, situated near the coast, and the Siletz. At Chemawa, near Salem, is a large Indian training school. The total Indian population in the state is about 3,500.

COUNTY OF THE CAPITAL.

Marion, One of the Oldest of the State, Very Prosperous.

Salem, Dec. 17.—Marion county, one of the oldest settled counties in the state, is today probably one of the most prosperous in Oregon. Its valuable farming lands lie in the most beautiful and fertile portion of the far-famed Willamette valley and the products of these farms have made many of their owners rich men in the past few years, and especially has the last year been a most prosperous one.

The best single crop is probably that gathered from the hop yards of the county, and dealers in this important product report that fully 20 per cent of the output of Oregon comes from the hop-yards of this county, and as the crop of 1903 was a most profitable one, it can be seen that a large amount of wealth came to the county from this source alone. This crop is a valuable one not only to the grower, who this year reaped an abundant harvest and sold his product at a big price, but to the laborers, including women and children, who make good wages during the picking season, thus earning money for necessities and luxuries for the winter. The hop crop distributes more money among that class of people having nothing invested in agriculture, than any other product of the land, and all of the money paid for hops comes from outside the state, thus being a clear profit to the county and state.

Next in importance is the fruit crop, and the strawberry garden is only excelled as a wealth-producer by the prune orchard, and both of these are to be found in great abundance in Marion county. The orchardists and fruit-growers of Marion county are jubilant this year over the rich harvest which has well rewarded their efforts during the past year and paid better dividends on the investment than would a block of preferred stock in the steel trust.

As a producer of grain, Marion county has broken all records. During the year just closed the yield of the wheat and oat fields having been far in excess of anything ever experienced. Livestock of all kinds has also brought good prices and the farmers are in consequence all happy and prosperous.

This prosperity among the people of the county in general is reflected in the cities. Business houses of all kinds are reporting better times in years, and the stocks of goods carried in the towns and cities of the county will compare favorably with those of larger cities in other sections of the country, and the increase in the stocks has been found to be justifiable in view of the greater demands.

Many new business blocks, substantial as in the larger cities, have been erected in the several towns and more are in contemplation, and the present era of prosperity, unequalled in the past, seems to be but the beginning of better things to come in the near future. And what is said of the cities holds good in the rural districts. New houses, substantial and beautiful, are going up everywhere in the country, farmers putting up buildings to replace the old, while many of the new arrivals from the East, who have in recent times located here, are erecting nice homes and

YOU CAN BUY The Eclipse Range for \$1.00 a Week

Are You One Of the 8,000

A Christmas Present for \$1.00 a Week

WOMEN OF PORTLAND WHO USE AN ECLIPSE RANGE?

If you are, you can do your neighbor a kindness by telling her of the many points of merit the ECLIPSE has.

For \$1.00 a Week!

The son, daughter or husband can make the nicest kind of a Xmas Present. We will deliver the Range at any time it is desired, and we absolutely know that for a fuel-saver, or baker, the ECLIPSE RANGE is better than any other on the market today. This guarantee goes with every range:

GUARANTEE BOND

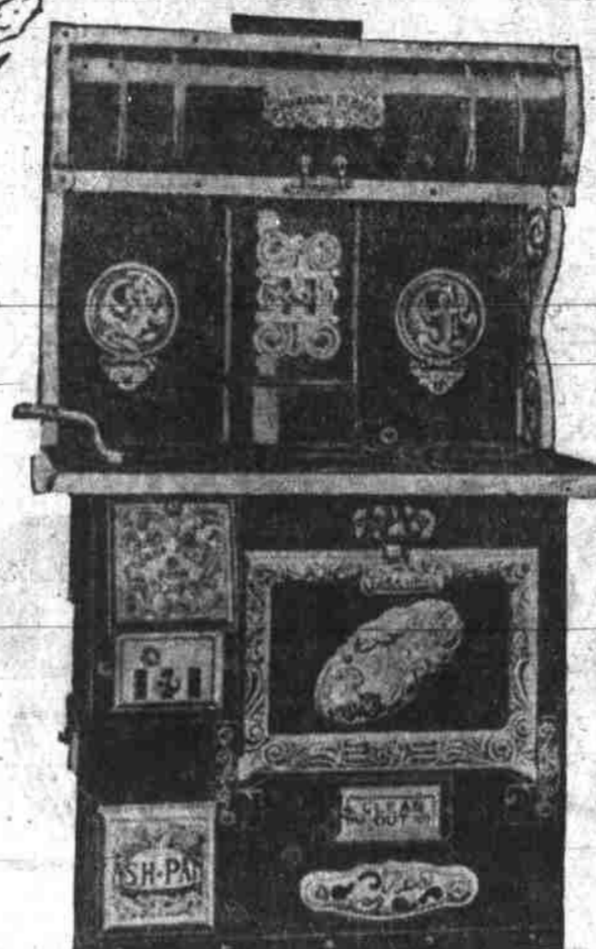
CAUTION—Do Not Lose This Bond

This is to Certify, That the ECLIPSE STOVE COMPANY fully warrant and guarantee the Stove or Range covered by this certificate, not to crack by fire for fifteen years, and to be a perfect baker.

Provided, The chimney is not defective, and that ordinary care and attention are given.

THE ECLIPSE STOVE CO.

Sold by I. Gevurtz & Sons



I. GEVURTZ & SONS HOME FURNISHERS

173-175 First Street 219 to 227 Yamhill Street

\$1.00 Per Week Buys Your Wife An Eclipse Range For a Xmas Present.

The Eclipse Range for \$1.00 a Week —An Elegant Xmas Present

Great Slaughter on Smoking Jackets

OUR SPLENDID

- \$6.00 JACKETS FOR ONLY \$3.75
- \$8.00 JACKETS FOR ONLY \$4.75
- \$9.75 JACKETS FOR ONLY \$6.75

And the merry selling still continues on Suits and Overcoats. Here's the whole story in a few words.

Real \$18 to \$25 Values

SUITS

Your Choice \$14.75

OVERCOATS

Your Choice \$12.45

YOUTH'S SUITS

Values to \$12.50

Your Choice \$9.75

Nothing to equal these values in the city today.

WELCH, The American Clothier Cor. 1st & Morrison

Cash Well Invested . . .

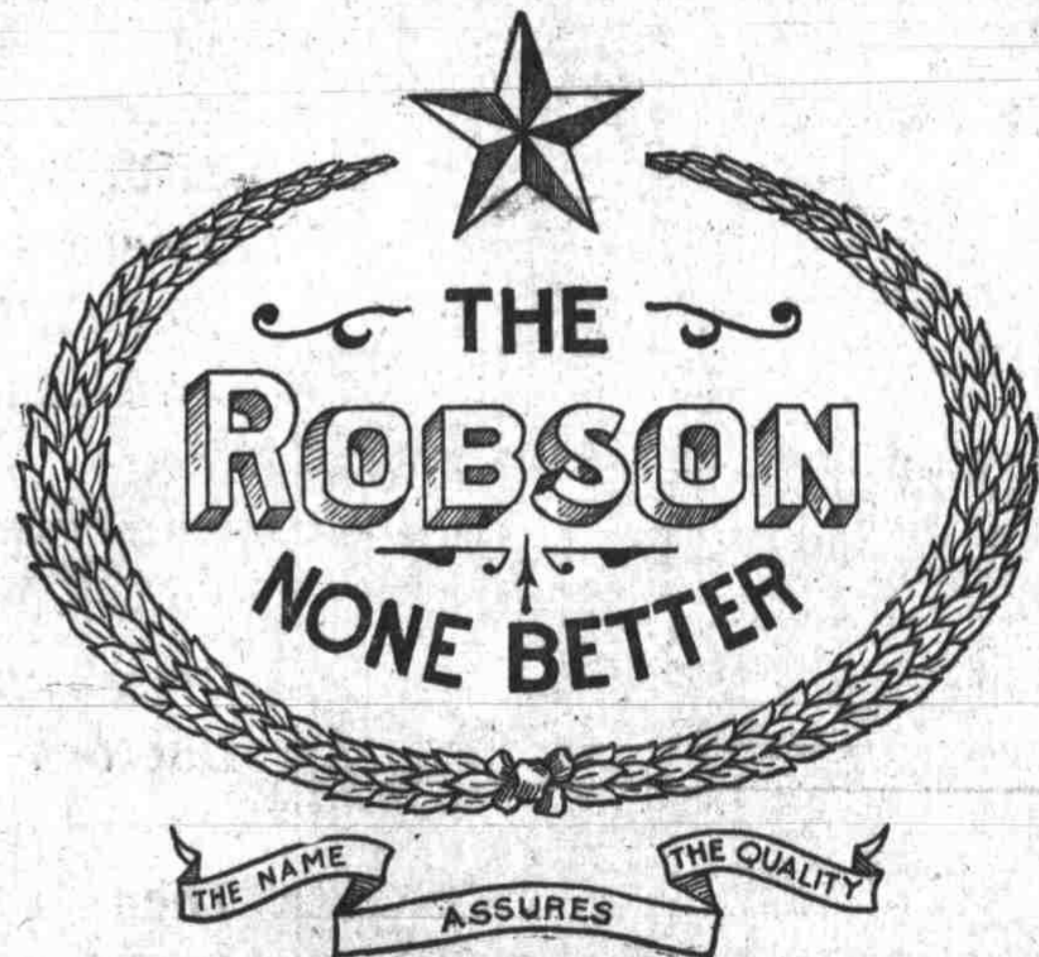


When you buy Jewelry or Diamonds from me. You'll like what you get for your money when you buy here and will have a living satisfaction in the purchase, since it will prove a lasting value.

I have many novelties in JEWELRY, CLOCKS, OPERA GLASSES, CUT GLASS, ETC. Come in and see the whole stock—you'll see something you want for Christmas.

A. N. Wright THE IOWA JEWELER 293 Morrison Street

THE ROBSON HAT \$3.50 ALL THE STYLISH SHAPES



THE BEST \$3.50 HAT IN THE BIG ROUND WORLD. MAKES CUSTOMERS OF MEN WHO EXPECT THEIR MONEY'S WORTH. **ROBINSON & CO.** 289 WASHINGTON STREET.

CHRISTMAS TURKEY

Leave Your Order Early Everybody Will Have Turkey For Christmas.

Butter 5c Lower BUTTER 40c and 45c

- Best creamery 55c and 60c
- Eggs, selected, dozen 35c
- Best sugar-cured ham 15c
- Picnic and Cottage hams 10c
- 5 pounds pure lard 55c
- 10 pounds pure lard \$1.10
- Best 60c tea 30c
- chickens, 15c; geese, 14c, for Saturday.

LA GRANDE CREAMERY 1464 YAMHILL

SAVED SEVENTEEN

PAGE 10