

A PAGE FOR THE HOME DRESSMAKER



Ways to Make the Fall Blouse of Silk or Wool

IT IS time to be thinking of those heavier fall bodices which, with a plain or tucked skirt of the same material, make up into such attractive costumes for afternoon and evening wear.

Silks—liberty, china and taffeta—sometimes covered with net, and the lighter woolen goods, such as wool voile or etamine, are being used for some of the most stylish of these gowns.

The range of choice in the matter of trimming for them is practically limitless.

One pretty model that has recently appeared is of gray chiffon, with collar in silk embroidery, finished off with wavy rows of cat-stitching. The embroidered yoke is flat, but below this the material is laid in single pleats, which are finished with tailor stitching. Medallions of the same embroidery decorate the front of the blouse.

Fagoting and hand embroidery make a charming decoration for an elaborate blouse of net built over silk. Scalloped bands of the silk fancifully embroidered trim the waist. The sleeves have several rows of the shirring below the shoulder line and just above the cuff.

A girlish blouse in cream-colored flannel is attractively trimmed with a double collar cape of the same material, having double rows of stitching and being finished off with two or three fancy buttons. There is besides a wee collar of delicate lace. This blouse shows a new effect in high, close-fitting cuffs. Plain and figured foulard of light shades combina

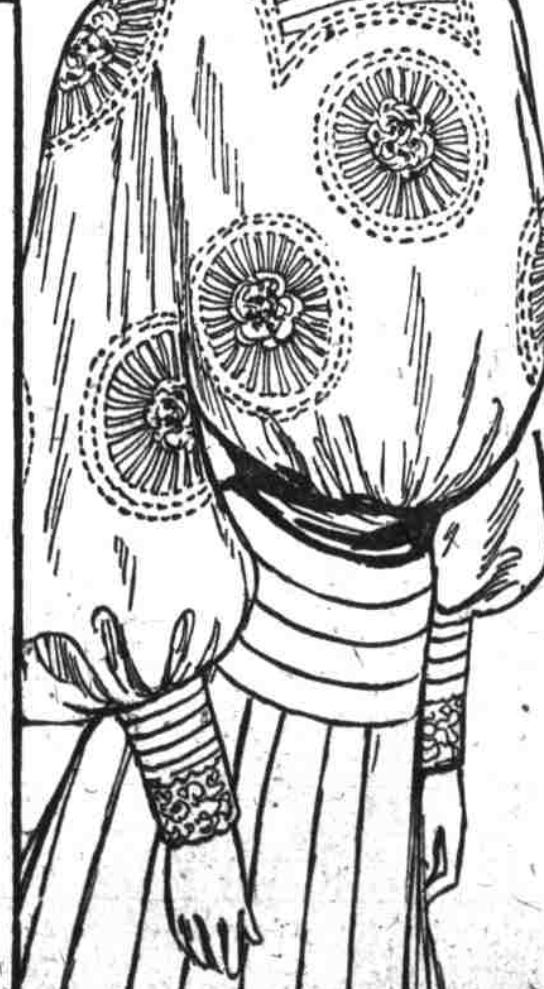
effectively in a fancy blouse for out-of-door wear in afternoon or evening. An excellent result is gained in such a waist by using the figured goods with the pattern arranged horizontally for the yoke, and again perpendicularly as bands for sleeves and front of bodice. The popular fagoting outlines these applied bands above and below.

Another dainty bodice was in white henrietta laid from shoulder to belt in broad, inverted pleats, finished with tailor stitching. The collar and chemisette are of the same goods, with pleats running horizontally.

A pink voile model is trimmed with fibre lace in the same color. The lace forms collar, epaulets, pointed stole effect down the front and strappings for sleeves, bodice, etc.

Broadcloth, with yoke and collar of heavy lace, makes a charming afternoon blouse. The lower portion of the waist is laid in narrow tucks. Below the shoulders occurs a deep bertha-like band of the cloth, cut in fancy pattern and decorated with medallions of the lace. These medallions also trim the upper sleeves, which are cut away near the elbow to show undersleeves and cuffs of the lace.

Pale blue crepe de chine is made up with a graceful fullness which is very becoming to slender figures. The collar and deep pointed yoke are of hand embroidery joined with rows of fagot stitching. The cuffs and collar have two rows of the fagoting, which also appears as a narrow band in the top of the sleeves.



The News of the Shops Told in Short Paragraphs

WASHABLE embroidered galons come in all designs and colors for trimming underwear, wash blouses, et cetera. Floral, conventional and Oriental designs are among the most frequent.

The galons range in width from half an inch to two inches.

Almost any wash waist can be matched in them. They are especially useful in trimming cotton kimonos and negligé sacques of various kinds.

A roll intended to hold the bobbin of bebe ribbon just as it comes from the shop is a pretty little novelty for the bureau drawer. It is handier than the spool or roller usually sold for the purpose because it does not necessitate unwinding the ribbons before using.

THE zibeline, of which quite a little is being sold this season, differs considerably from the fabric sold under the same name a few seasons ago. Women who invested in the material at that time and found it a bad bargain, can indulge this fall without fear. The closely sheared goods of the present is very superior in wearing qualities to the shaggy haired varieties which proved disastrous to many wardrobes of women of moderate means.

AMONG the new protection collars come real Japanese sets, hand-drawn, with decoration in the popular cart-wheel patterns.

ONE OF the recent arrivals in fancy neckwear is the yoke-collar. This is an enlargement of the tabbed style we have been wearing, with the difference that it extends down the back as well as the front.

This pattern is shown in all sorts and combinations of fabrics. In many models the entire collar is of embroidery made of silk and other materials. Again, narrow but heavy bands of lace and embroidery are inserted. These yoke collars are, almost without exception, in open-work style.

AMONG the new veilings brought out for late season wear are some novelties in diaphanous fabrics made of silk and having a very high lustre. The weaves suggest chiffon, but are much coarser, many showing almost a file effect.

These veilings come principally in white, although some colors and black are also seen. Most of them are edged with a heavy ribbon-like border in self-color.

AMONG the novelties that have already appeared in these laces for gowns are some startling combinations in wood fibre and wool. In many of these combinations colors run riot. However, a few are in simple white or champagne, cream or black, and many others in two-toned effects, the silk in one color and wool in another. These last are usually too brilliant for good taste.