

The Store *The* Ladies
FOR Women **BEEHIVE** Outfitters
MILLINERY
SPECIAL SALE
Ladies' Long Silk Gloves
Black, White and Colors
Special Sale of White, Pongee and Colored Parasols--Big Assortment

BUSY AND THRIVING TIMES AHEAD

MANAGER WHYTE OF THE CHAMBER OF COMMERCE IS ENTHUSIASTIC OVER OUTLOOK FOR THE FUTURE.

The regular meeting of the Chamber of Commerce will take place tomorrow night at 8 o'clock. Since the last meeting the directors for the new electric railroad to Seaside and Tillamook have been elected and surveying of the line has begun. The long-talked of oil and gas boring proposition has been bought to a point where beginning of drilling may be announced on almost any day and the Chautauqua proposition has been successfully financed so that with next year it may be expected that the largest Chautauqua Association in the Northwest will be a thing of reality in Clatsop county. The machinery for the brick plant is due any time and considerable discussion may be expected upon the seawall proposition. The Astoria Military Company is now organized and something will probably be heard about this exceptionally brilliant enterprise which has been so intelligently conducted by City Attorney Abercrombie.

Then it might be mentioned that while Astoria has not yet succeeded in achieving the so-called, much-mooted common point rate on wheat, yet Kalama, a large and growing city, which bids fair to outrival Portland and which is about half way between Astoria and Portland, his having large docks built for the shipment of grain, showing that Astoria has at least succeeded in bringing the wheat half way from Portland to Astoria, and that the other half of the way will probably be still more easily accomplished.

A dairy and colonization plan which is without doubt the biggest and the best thing of that kind ever yet organized in this city, will be outlined by the dairy committee. This big proposition is ripe and will be consummated early this fall. Dr. Barr chairman of this committee, will be on hand to tell about it.

Manager Whyte is enthusiastic over the outlook for Astoria, and believes that big things are coming.

DONE BY DEED

- Susie F. Better to Seneca C. Beach, lots 22 and 24, block 7, Gearhart Park; \$250.
- Walter C. Smith and wife to Myrtle L. Clithero, lots 3, 4, 5 and 6, block 31 in The Plaza; \$900.
- George B. Posey to Charles S. Brown, lots 13, 14, 15, 16 and 17, block 8, Powers addition to Astoria; \$10.
- Columbia Harbor Land Co. to Morris Taylor, lot 7, block 69, Warrenton Park; \$250.
- Frank E. Wascher and wife to H. E. Noble, north half of south east quarter and the south east quarter of the south east quarter of section 7, township 5; \$1800.
- W. E. Burke to Anna O'Toole, lot 21, block 3, first addition to Ocean Grove; \$1.
- George I. Clithers and wife to Walter C. Smith, lots 5 and 6, block 16, in Smith's Warrenton; \$650.
- Frank Patton and wife to Peter Dourel, lot 4, block 4, Astoria, and also certain parts of lots 5 and 6 in block 111; \$1.

PERSONAL MENTION

Carl M. Rhone, of the J. E. Pinckham Lumber Company, of Seattle, was in the city yesterday, on business for his people.

TEA

How little it is! How little it adds to the weight of the cup! It has covered the sea with ships for a hundred years.

Your grocer returns your money if you don't like Schilling's Best. We pay him

RAILWAY WILL STOP ITS WHISTLING

THE ASTORIA & COLUMBIA RAILWAY SETS A FINE EXAMPLE THAT STEAMERS MIGHT NOW FOLLOW.

Yesterday City Agent G. B. Johnson, of the Astoria & Columbia River Railroad Company, received a communication from Superintendent John McGuire at Portland, advising him that orders had been issued from Mr. McGuire's office to all engineers and hostlers of the company, to cease blowing all engine whistles in passing through this city, from the round-house at the eastern end of the city, and the Tallant-Grant cannery on the west; but that the bells on the engines must be kept ringing constantly all the way through the city.

The only exception allowed in the new whistling order, is that the engineers will use them at any and all times when it is essential to save life or property.

This is a ready and appreciated concession by the company to the recent expression in this city against the constant whistling in that service, and will not lack ready acknowledgment on all sides. It is to be hoped the friendly and prompt action of the A. & C. will be emulated by the steamer companies whose boats are really responsible for the most of the unnecessary uproar along the waterfront. The call whistles from the docks may easily be dispensed with, and if some passengers are unlucky enough to lose their steamers a time or two, it will enforce a closer observance of the schedules, and save a wonderful lot of public annoyance in the city, day and night.

ORNAMENT OF NATURE

These signs, and the thoughts that they excite in us, make the American girl of this hour seem more than commonly like an adventurer in uncharted seas, bound for a port set down in papers that have as yet an unbroken seal, and whose course our utmost love and best experience can no more than imperfectly anticipate and safeguard. And that gives us the more sympathy with her reluctance to be shaped on the lines of any existing pattern, and makes us more attentive and indulgent to promptings and refusals and aspirations that may have back of them intuitions that are wiser than any premonitions of ours. The most we can do for her is to provide that her preparation and equipment shall be the soundest and most thorough that can be given her. It is a matter of faith that she will do for the world what her mother did before her; aye, and something more; but she will do it somewhat differently; in her own way, and not precisely as her mother did. One would think, to see her out of doors, that she was all for sport, and found the main-spring of existence in the chase after pleasure. Surely in that aspect she is delightful to regard, the most pleasing and inspiring of all the ornaments upon the face of nature. To adorn creation being one important thing that she is here for, there can be nothing but grateful approval of her spirited discharge of that duty.

—Success Magazine.

CAMPAIGN IN WEST.

Republican Leaders Believe That the Democrats Will Make Little Effort in the East.

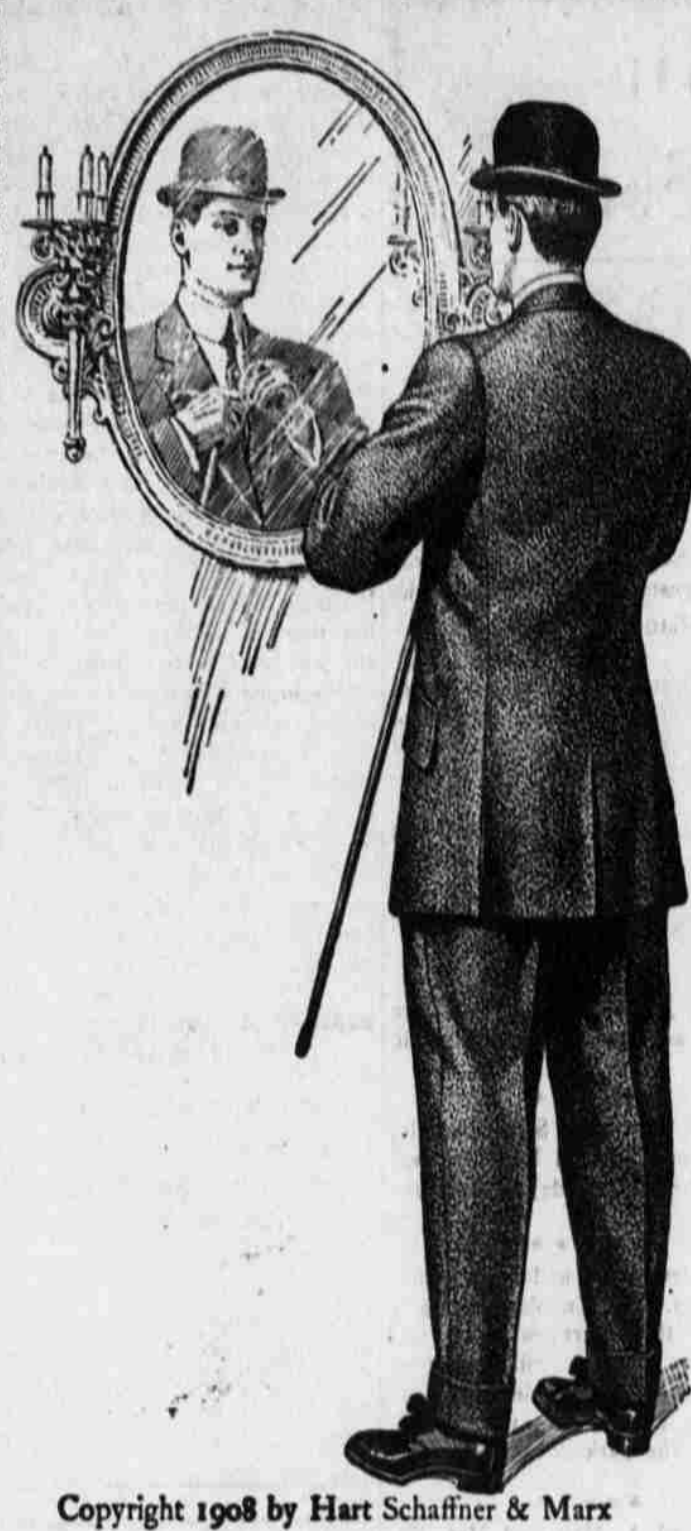
HOT SPRINGS, July 11.—That the campaign is to be conducted chiefly in the west is conceded by Republican leaders who have been here since the Democratic Convention concluded. Elmore Dover, secretary of the Republican National Committee, said that the selection by Democrats of a vice-presidential candidate from the west and several planks of the platform plainly indicated to him that the Democrats do not intend to make a general effort for electoral vote in some parts of the east. Treasurer George R. Sheldon of the national committee does not intend to permit any delay in beginning his work of raising campaign funds.

Subscribe to the Morning Astoria.

Parker House Restaurant

Opened under new management. Lady cook. Nothing but whitehelp employed.

Popular Prices.



Stop and Think

For a minute and you'll realize that as many people see your back as your front. The cut of your coat, the way it fits and hangs—you can't see the back yourself, but other people can.

You want it right; and we offer you the clothes that will make it right. They're made by

Hart, Schaffner & Marx

And there are no better clothes made. Newest Summer patterns \$18 to \$30.

Shirts

We have never shown a finer assortment of Men's Dress and Soft Collar Shirts than we now have; nice bright, clean patterns; they're right; \$1.25 to \$5.

Trunks and Cases

All styles of trunks from the "little steamer" to the large bureau style.

Prices.....\$4.50 to \$25
Cases.....\$1.25 to \$18

Copyright 1908 by Hart Schaffner & Marx

Summer Underwear

P.A. Stokes

Fancy Sox

Nobby Clothier

MAY BE MURDER.

SAN FRANCISCO, July 11.—Working on the theory that John Buchneff, a 14-year-old lad whose body was found buried in a bin of garbage at the sanitary reduction works last night, was murdered, and the body thrown into the bin to conceal evidences of the crime, the police today placed August Delmonte, an employe of the plant, under arrest pending further investigation. A post-mortem examination showed the boy came to his death from a wound in the head such as might have come from a prong of a rake or small calibre bullet. No bullet was found however. The police are working on the theory that the boy was playing in the bin and when ordered away did something to anger some employe who struck him in the head.

DON'T LIKE BRYAN

German Paper Says He is Far Below the Level of Cleveland.

BERLIN, July 11.—All the newspapers this morning print the news of the nomination by the democratic convention at Denver of Wm. J. Bryan for the presidency of the U. S. but the most of them without comment. The Boersen Zeitung, National Liberal, says:

Mr. Bryan upon the whole is a very sympathetic personality. His great eloquence is due to his speaking his conviction. He is a man of weight and magnetism but hardly a statesman. The Morning Post, the radical democratic organ, says Mr. Bryan is far below the level of Grover Cleveland in statesmanlike capacity.

THE COAL QUESTION

NEW YORK, July 11.—If the consumption of anthracite coal continues at the same rate at which it has been going on for the last several years it is estimated that the supply will be entirely exhausted in the year 2055 says Edward W. Parker of the United States Geological Survey. He adds that by that time according to the records up to date the U. S. will be using more than two billion tons a year 2,300,000,000 to be nearer exact. The average annual production during the decade from 1916 to 1925 will be about 600,000,000 tons. The total production in 1907 was 480,450,042 tons.

.Cherry Time.

Is here and if you want the best the market affords, at the right price, leave your order with us and you'll get satisfaction.

ACME GROCERY CO.

HIGH GRADE GROCERIES

521 COMMERCIAL STREET PHONE 681

July Official Tide Tables

Compiled by the U. S. Government for Astoria and Vicinity.

JULY, 1908.				JULY, 1908.							
High Water.	A. M.	P. M.		Low Water.	A. M.	P. M.					
Date	h.m.	ft.	h.m.	Date	h.m.	ft.	h.m.				
Wednesday	1	8:56	0.2	9:06	3.7	Thursday	2	9:22	0.2	9:47	3.6
Thursday	2	9:30	0.2	9:52	3.4	Friday	3	9:52	0.5	10:24	3.4
Friday	3	9:55	0.4	10:22	3.2	Saturday	4	10:22	0.9	11:05	3.2
Saturday	4	10:25	0.9	11:40	2.9	SUNDAY	5	10:54	1.4	11:51	2.9
SUNDAY	5	10:55	1.3	12:40	2.7	Monday	6	11:40	1.9		
Monday	6	11:45	2.2	1:40	2.4	Tuesday	7	12:40	2.4	12:28	2.4
Tuesday	7	12:45	3.0	2:40	2.1	Wednesday	8	2:00	3.1	2:28	2.1
Wednesday	8	2:00	3.8	3:40	1.8	Thursday	9	3:00	4.5	3:28	1.8
Thursday	9	3:15	5.0	4:40	1.4	Friday	10	4:00	6.0	4:28	1.4
Friday	10	4:25	6.2	5:40	1.0	Saturday	11	5:00	7.4	5:28	1.0
Saturday	11	5:45	7.4	6:40	0.6	SUNDAY	12	6:00	8.6	6:28	0.6
SUNDAY	12	6:45	8.4	7:40	0.2	Monday	13	6:58	9.5	7:28	0.2
Monday	13	7:30	9.1	8:40	0.0	Tuesday	14	7:52	10.2	8:28	0.0
Tuesday	14	8:10	9.6	9:40	0.0	Wednesday	15	8:10	10.7	9:28	0.0
Wednesday	15	8:30	9.9	10:40	0.0	Thursday	16	9:00	11.0	10:28	0.0
Thursday	16	9:45	10.0	11:40	0.0	Friday	17	9:48	11.0	11:28	0.0
Friday	17	10:30	9.9	12:40	0.0	Saturday	18	10:34	9.6	12:28	0.0
Saturday	18	11:15	9.3	1:40	0.0	SUNDAY	19	11:22	8.8		
SUNDAY	19	12:00	8.4	2:40	0.0	Monday	20	12:00	7.6		
Monday	20	12:45	7.3	3:40	0.0	Tuesday	21	1:28	6.3		
Tuesday	21	1:35	6.0	4:40	0.0	Wednesday	22	2:38	5.0		
Wednesday	22	2:45	5.4	5:40	0.0	Thursday	23	3:45	4.0		
Thursday	23	3:45	4.4	6:40	0.0	Friday	24	4:40	3.0		
Friday	24	4:30	3.4	7:40	0.0	Saturday	25	5:32	2.4		
Saturday	25	6:18	1.6	8:40	0.0	SUNDAY	26	6:18	0.6		
SUNDAY	26	6:55	0.7	9:40	0.0	Monday	27	6:55	0.0		
Monday	27	7:30	0.0	10:40	0.0	Tuesday	28	7:30	0.0		
Tuesday	28	8:00	0.0	11:40	0.0	Wednesday	29	8:00	0.0		
Wednesday	29	8:28	0.1	12:40	0.0	Thursday	30	8:28	0.1		
Thursday	30	8:50	0.4	1:40	0.0	Friday	31	8:50	0.4		

Subscribe for the Morning Astorian