

Unsurpassed as a Fruit Growing County.

FRUIT growing in Clatsop county is in its infancy, but its possibilities are almost startling in results. Everything in fruits and berries raised in a northern or semi-tropical climate may be grown in an abundance which promises to make rich all who give their attention to raising the produce in Clatsop. A few small acres on a hillside, or in a valley, will produce results that will make the poor man independent and put him on the road to riches.

Where trees now erect their towering trunks of fir, spruce and hemlock there will be peaceful gardens bright with blossoms or rich with large and juicy fruits. Spreading fruit trees in even rows will grace the landscape and provide a living for the settler four years after they are planted. Agricultural products of all kinds will be grown on hill and valleys which at present are covered with young trees and a rank growth of ferns.

Nowhere on earth is the opportunity to make a success of truck gardening more apparent than in Clatsop county. The land is cheap and the market unlimited. It has been proven that the soil will produce qualities of fruit unusual in size and flavor. The market is in Astoria, along the dozen summer and winter resorts on the west shore of the county, and by rail to Portland or by boat to any place on the Pacific Ocean.

Prices are higher for the product than in any part of the United States and the few fruit growers, who have recently commenced operations, are desirous of more settlers engaging in the business so that they may gain recognition from the transportation companies for their mutual benefit. This is a feature of settling in Clatsop county which is unusual in most fruit-growing sections, where the growers wish to have the "whole show" to themselves.

In regard to the growing possibilities of the land, local fruit growers declare that it is immaterial whether high land or valleys are used for fruits. They grow just as well either on a hillside where the sun shines strongly, or in the valleys where there is more moisture. The cool dewy nights and pleasantly warm days are exactly the thing for the production of fruits regardless of the location of orchards and gardens.

"Highland Farm," owned by B. S. Worsley, nine miles east of Astoria and two miles from the Columbia, is the wonder of all who have seen it, in the Pacific Coast country. Forty acres cleared from the tall timber six years ago has been made the finest producing fruit farm in Oregon, because of the richness of the soil. Raspberries, strawberries, roots and orchard fruits have reached a perfect stage of development on this property.

It is the pioneer fruit farm in the county, because while there are a number of farms planted with fruit trees which have proven successful, the Highland Farm is the first to go into fruit and berry-raising as its foundation. That fruit or berry-raising in Clatsop county is a paying proposition, a history of this farm will easily prove.

The Loganberry, a creation of Judge Logan's, consisting of a cross between a Dewberry and the Antwerp raspberry, has gained fame throughout the west coast states as one of the finest berry productions of the world. The bushes grow to an immense size and the fruit is marketable from the end of the first week in July and for the following five weeks. It is a large dark purple berry one inch to one and one-third inches in length and nearly an inch in thickness. It runs 680 plants to the acre, planted eight feet apart. A low estimate on its production on the Highland Farm this year is 350 crates to the acre.

Burbank's Phenomenal, created from a hybrid and a Cuthbert raspberry, is much superior to the Loganberry and grows profusely on this Clatsop farm. It is much larger and a redder color than the Loganberry and secures a better market. It is planted about eight feet apart and runs about 680 plants to the acre. The fruit is one and a half inches to three inches long, and from an inch to an inch and a half in thickness. It is simply immense and on the Highland Farm reached the height of its perfection, the lowest estimate on the season's crop being 400 crates to the acre.

The Mammoth blackberry, created from a hybrid and two varieties of wild California blackberries, is also very prolific on this soil and grows from one to two and a half inches in length. It attains a high number of crates to the acre and is a source of much revenue because of its flavor. It is similar to a species of blackberry which grows in a wild state all over the county, and which attains such a rank growth from its rapidly spreading proclivities, that it has attained universal growth all over the northwestern part of the state.



RESIDENCE AND GROUNDS, HIGHLAND FARM.

The Cuthbert and Early King raspberries are also great producers in the county and attain their highest perfection on this soil. They may be grown in the valleys or in the rolling, hilly sections which abound throughout Northwestern Oregon. In fact, all varieties of raspberries do as well, and probably better here than in the famed fruit-growing districts of Oregon and Washington.

The Highland Farm is the biggest producer of strawberries in Clatsop county and has already shown to what a high state of perfection this valuable berry may be raised in the rich soil of the district near Astoria. The Worsley is a strawberry which stands alone in the state as a fall production, and is grown only by its originator, the owner of the farm. It is a cross between the wild strawberry of Oregon and the Magoon and is among the finest flavored berries of the entire country.

The flavor of the wild strawberry is well known to almost everyone as the sweetest tasting berry of this description. Its smallness and the efforts required to secure it have prevented it from becoming a marketable commodity. The Magoon is a large delicious fruit and by crossing it with the wild strawberry the latter has retained all its native sweetness and is a large marketable fruit.

Mr. Worsley has been growing the berry for the past three years and has attained such success with it, that he will make it his largest berry crop in the future. What makes it a valuable fruit product is the fact that it is marketed from the beginning of August until the first of November—months after the regular berry crop of the state has passed into history. This secures for it a good market at a high figure.

In this climate the berry is very prolific and on Mr. Worsley's farm, which is no different from the rest of the soil in the county, 250 crates to the acre is the lowest estimate on the crop, the prices ranging from \$3 a crate upwards. In small quantities at retail it easily brings 25 cents a pound. One thousand dollars an acre is an average of what may be made from this berry on Clatsop county soil. The Oregon and the Magoon strawberries are also very prolific in their growth here, and



SCENE ON HIGHLAND BERRY FARM.

S. A. GIMRE

THE LIVE SHOE DEALER

IN THE BEST MADE

Dr. A. Reid's Cushioned Shoes

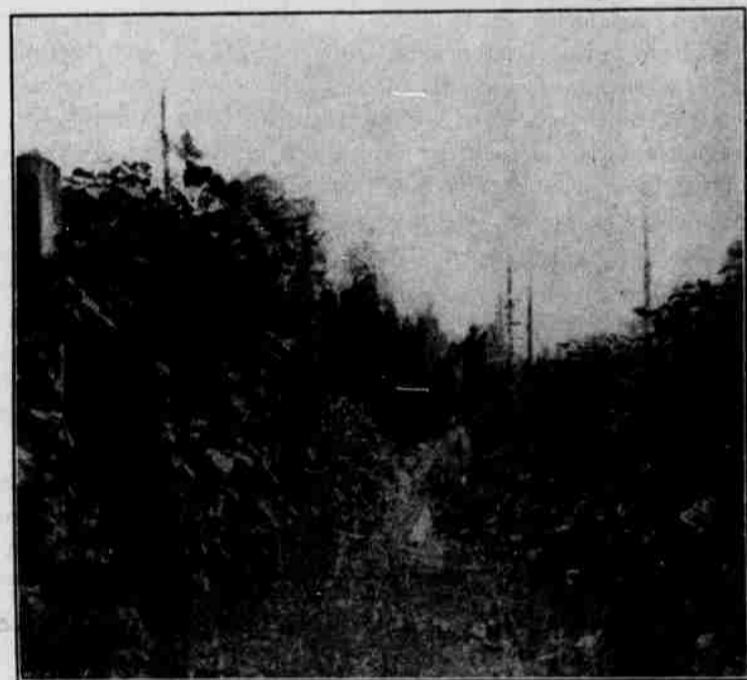
Feet don't Ache or Tire. Investigate the Quality and be Convinced.

Our Specialty Line

of Logger's and Fishermen's Shoes Guarantee Satisfaction to the Wearer. None better but a leader of all.

PRICES RIGHT

Astoria, - - Oregon



LOGAN BERRIES, HIGHLAND FARM.

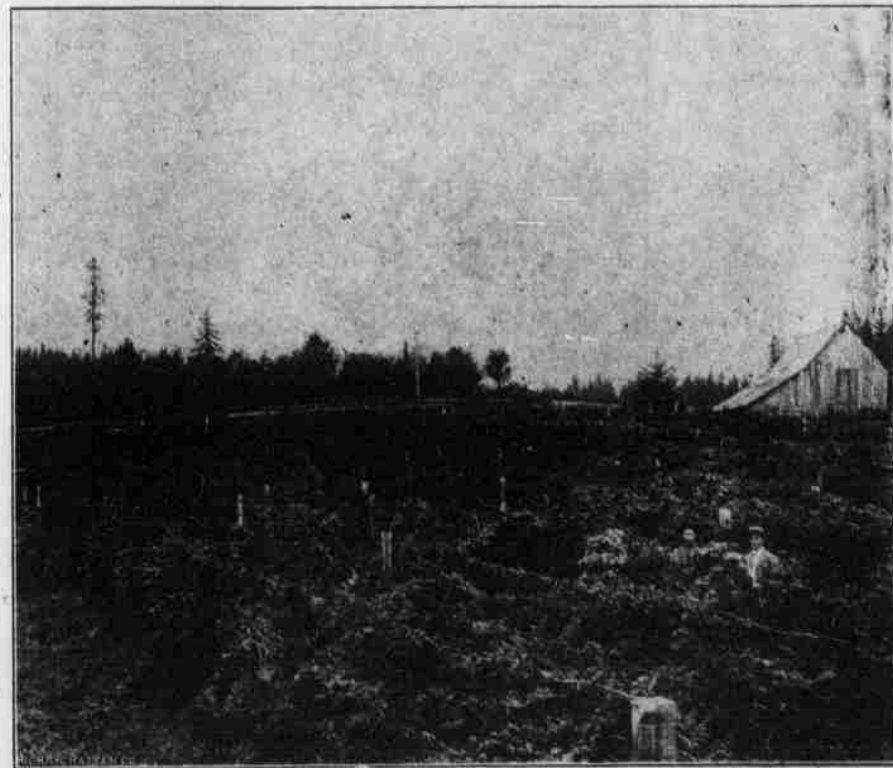
demand a good market. The former comes in about June 1, the latter a little later, and both going out in about a month.

All the good variety of apples in Oregon grow well on Clatsop soil and the trees bear heavily. The Italian prune, known as the best in the world, attains a high stage of perfection on Highland Farm, the trees seldom being strong enough to bear the weight of the full crop. The Keifer pear and numerous others are very prolific, also the Royal Anne cherry and all small fruits, such as gooseberries, currants, etc. The latter bring a half dollar a bush by their product according to a very low estimate.

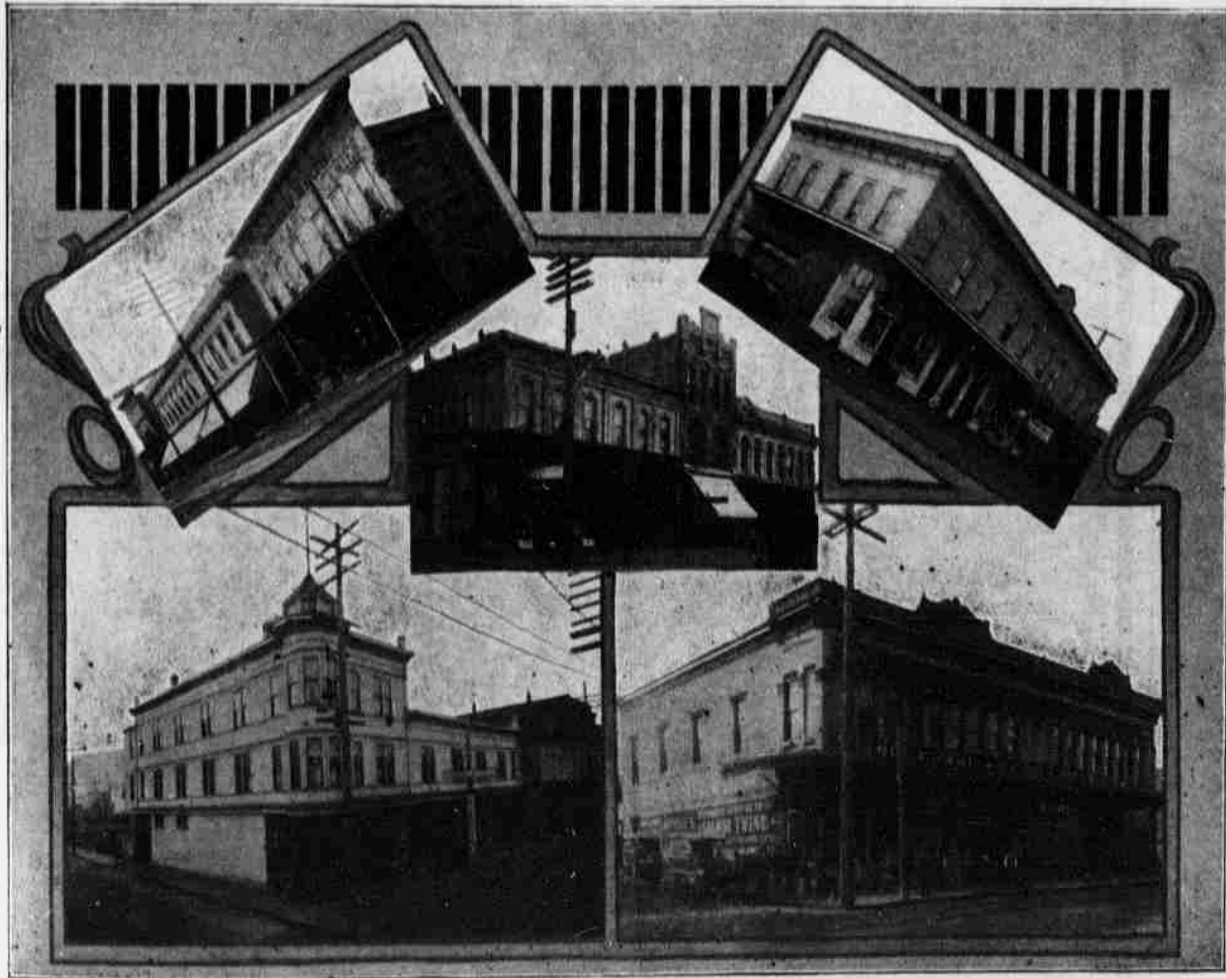
Roots and vegetables also grow rapidly and attain a perfection unsurpassed anywhere in the west. Beans, onions, carrots, turnips and all this variety of vegetables attain a quality unheard of in a new country. Potatoes show up well, and Mr. Worsley on his Highland Farm has created the Clatsop Queen from the Burbank and others. The strong point of this potato is its fine quality and its imperviousness to all changes in weather conditions.

The potato is pure white both inside and out. The eyes are very small and shallow, the shape being like the Burbank, only a suggestion flatter. It is firm and does not boil to pieces, is mealy and exceptionally fine for cooking purposes. Its chief claim to distinction, however, is that it is absolutely blight-proof. The seed is planted in April and the potato is ready for use from May 20 to late in the season, making it a good late crop.

Everything grown on the Highland Farm clearly proves that the soil may be used for almost any production. The fact that it is similar to the hilly sections of any other part of the county proves what may be done with the land at present covered with timber and open for settlement of thousands from all parts of the United States.



HIGHLAND BERRY FARM.



ASTORIA BUSINESS BLOCKS.