

**Local and Coast Shipping Concerns
Which Make Astoria Headquarters.**

The leading local concern devoted to shipping and marine interests is the Callender Navigation Company, a well-founded corporation, doing a thriving business, with a fine dock and a fleet of six small, but excellent, bay steamers, employed in despatch, towing and excursion business. The destinies of the company are directed by President M. E. Callender, ably assisted by Vice-President Max Skibbe; the business detail being left in the capable and energetic hands of Charles H. Callender, the secretary, treasurer and general manager of the big concern, which, at the end of its third year of business, finds itself a fixed and flourishing factor in the commerce of the lower Columbia.

The company maintains a fine dock on the bay front here, 250 feet long by 65 feet wide, all well housed, with a 40-foot gangway leading to it from the busy heart of town. The dock, and the handling of the 75,000 to 100,000 tons of freight that goes over it, in and out, during the year, is in charge of Wharfinger Charles E. Mitchell; and is the berthing point of the North Pacific Steamship Company's fine steamers, Roanoke and Geo. W. Elder, plying between San Pedro, San Francisco, Eureka, Astoria and Portland, on a weekly service; the California & Oregon S. S. Company's steamer Alliance, running between Coos Bay, Astoria and Portland weekly, and of the itinerant fleet of steamers that do the lumber-carrying out of this port to all points on the Oregon & California coasts, namely, the Northland, R. D. Inman, John Poulsen, Yosemite, Cascades, J. B. Stetson, Gray's Harbor, Casco, St. Helens and the Nome City.

The company's own fleet consists of the steamers Melville, Wenona, Vanguard, Jordan and Mayflower, and the fine excursion motor-launch Queen. In connection with this line of boats, the Callender people maintain a fleet of six great freighting barges, with capacities ranging from 50 to 700 tons each, and a gross capacity of over 2000 tons.

The steamer Wenona runs regularly, and daily, between this city and Gray's River; and the steamer Jordan takes care of the traffic between Astoria and the Deep River country; the other Callender boats being kept actively employed in towing log rafts to and fro between the many timber camps on the adjacent rivers and the great milling plants in and around Astoria.

Captain J. W. Babbidge, one of the veteran river men of this city and section, in conjunction with his sons, A. S. and E. L. Babbidge, also maintains a fleet of three steamers here for bay and river work, and keeps them on the jump from one year's end to the other.

The fleet consists of the fine steamer Electro, chartered to the United States government as a tender in the quarantine service of the country; R. Miler, running between this city and Chinook, on the north shore of the river; and the steamer Julia B. (recently launched), which does a general towing and excursion business all over the territory bordering on the big harbor of Astoria. The three being ranked among the best boats of the class in service here.

ASTORIA AND COAST POINTS TRANSPORTATION FACILITIES.

The Tillamook steamship service out of this port is maintained by Samuel Elmore, one of the leading business men and factors of Astoria,

and the fleet belonging to the company, consists of the steamer Sue H. Elmore and the fine motor schooners Evie, and Gerald C.; the first named vessel attending to the Tillamook Bay traffic, and the latter boats running hence to Nehalem, Nestucca and other Oregon coast points.

The fact that most of the ports served by these vessels have dangerous, and almost impassable bars off their entrances, makes the maintenance of anything like a regular schedule practically impossible; but the service is made as steady as circumstances of sea and weather will permit; and the Elmore fleet does a good business and serves a long range of coast territory.

**Astoria Free
Public Library.**

One of the best inspired, and best maintained, institutions of the city of Astoria, her people owe to the good women of the place, the Astoria Public Library. It stands pre-eminent among the solid and useful addenda of the community and contributes widely to the pleasure and convenience of thousands, every atom of success being due to the sleepless energy and devoted work of the group of ladies, who, in the spring of 1892, established it, many of whom are yet conspicuous in its management.

The idea originated in the Young Women's Christian Association, whence come innumerable good things of this kind, and it was followed up closely to the moment of the incorporation of the association now handling it. It was made an object of interest and there are but few citizens in this city whose friendliness to the project has not been made manifest in some distinctive way, in the founding, and subsequent operation.

After the interminable vicissitudes through which all such enterprises must perforce pass, the Library is today ensconced in beautiful quarters at the City Hall, elegantly furnished and equipped, and the Mecca of a thousand visitors a month; it has 3320 well chosen volumes, including all the phases of literature usually found at such establishments, with all standard lines of reference, and 52 of

the popular current magazines upon its tables; and to accommodate the pronounced foreign element of local population, there are large numbers of works in Danish, Swedish, Norwegian and German.

The city government imposes a small tax yearly for the benefit of the Library and has always given it specific recognition and aid and will undoubtedly do more as the growth of the place and the needs of the institution demand. The subscription dues have been placed at \$3.00 per

annum, but, happily, this has been relegated to oblivion forever, and the library made absolutely free to all accredited users; a step that but enhances its extraordinary value as a municipal adjunct.

The library is in the hands of a board of directors of 15 ladies and the business is carried on with consummate skill and a rigid adherence to the most approved systems of library government, and is kept practically free from debt, an administrative phase peculiarly notable in these days of extravagance in the handling of public and quasi-public affairs.

Those responsible for the library at the present time are: Mrs. A. A. Finch, president; secretary, Mrs. P. A. Trullinger; treasurer, Miss Eva Holmes; directors: Mrs. Samuel Elmore, Mrs. P. A. Stokes, Mrs. A. J. Taylor, Mrs. N. Troyer, Mrs. John H. Smith, Mrs. A. D. Garner, Mrs. A. S. Tee, Mrs. Frank Patton, Mrs. George H. George, Mrs. Herman

Prael, and Miss Dora Badollet. The librarian, Mrs. Margaret L. Upshur, is a conscientious and tireless representative of the management and a courteous and friendly hostess to the thousands who flock in the handsome rooms of the Astoria Public Library from one year's end to the other.

RIVER VIEW DAIRY.

Three miles out from this city, on the fertile banks of the Lewis & Clark river, Messrs. J. H. and I. M. Jeffers maintain one of the finest dairying properties in Clatsop county. They handle 100 thoroughbred milch cows, from which they market a superb line of dairy produce, through three distinct depots in this city, with two deliveries daily to a big clientele. Their milk and cream being handled either in glass measures or in bulk quantities, and all of it simon-pure and exquisitely clean from all processes. They are among the substantial figures in the department of the business world of Astoria and enjoy a rightful and pronounced share of the commerce of county and city.

There is no safer investment than in Astoria and Clatsop County Real Estate. It is a bank that never breaks. Dividends are sure. Best bargains in all kinds of Real Estate. Fine Fruit and Berry Lands in small tracts. Fishermen's Homes, Dairy Lands, Chicken Ranches, Improved and Unimproved City Property. Some choice snaps in Real Estate. A few blocks in North Pacific Addition to Astoria, yet at a low figure.



CALL ON OR ADDRESS

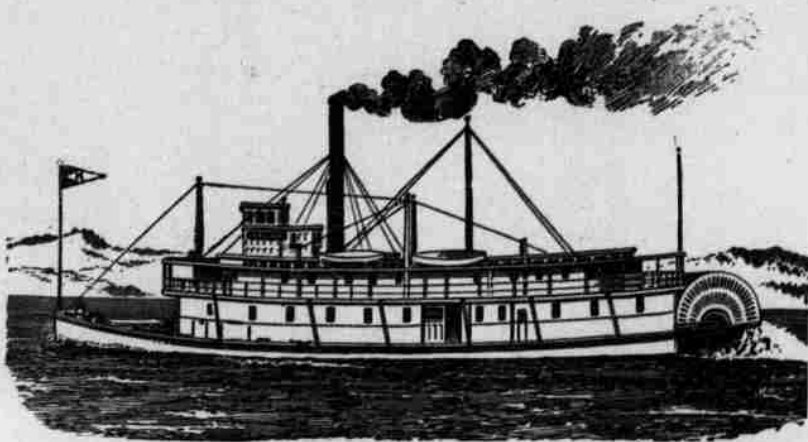
A. R. CYRUS

**Real Estate, Insurance and Financial Agent
Notary Public and Conveyancer.**

424 Commercial Street, ASTORIA, OREGON

Refer by permission to the Astoria National Bank, or any business man in Astoria.

K LINE



STEAMER LURLINE

"THE OLD RELIABLE"

Leaves Astoria Daily, Except Sunday, 7 p. m.

Leaves Portland Daily, Except Sunday, 7 a. m.

Making connections at Astoria for Seaside, Long Beach points, Chinook, Deep River, Grays River, Nehalem and Tillamook and at Portland with Str. Undine for Vancouver, Wash., and with Str. Mascot for Lewis and Lake Rivers.

River transportation has been one of the greatest developing agents of the Northwest, in which the Vancouver and Lewis River Transportation Companies have had a prominent part.

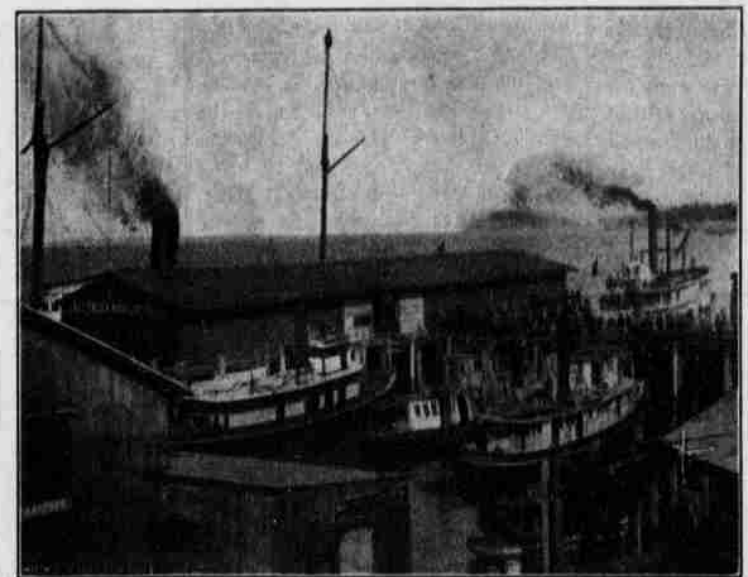
These companies constitute the "Diamond K Line" and have been under the direct management of Jacob Kamm, president, and pioneer steamboat man of the West. The Vancouver Transportation Co. was incorporated in 1874, and for the most of the time since the Lurline has been plying between Astoria and Portland.

Callender Navigation Co.

Steamers Melville, Jordan, Wenona, Vanguard, Eclipse and Launch Queen

Barges Suitable for Moving Logging Engines, Lumber, Etc.

Towing, Freighting and Excursions



— AGENTS FOR —

NORTH PACIFIC STEAMSHIP CO.

CALIFORNIA & OREGON COAST STEAMSHIP CO.

E. A. DODGE & COMPANY

Operating passenger and freight steamships to all coast ports from San Pedro, California to Astoria, Oregon.

ASTORIA, - - - OREGON