

PORTLAND MARKETS

Wholesale Price List as Reported Daily.

PORTLAND. There is no material change in the butter market. Supplies of cream are said to be falling off, which would tend to stiffen the market, but it is not deemed advisable to raise prices at this time.

Eggs continue firm at prices ruling for the past week.

Fall varieties of apples are plenty, and some winter kinds have been received. On account of supplies being greater than the demands prices are lower than last week.

Hops are weak on account of conditions in the east, and not much improvement is looked for in less than one month.

WHOLESALE PRICES.

The following are quotations ruling in Portland as reported by jobbers in the various lines:

Grain, Flour, Feed.

Wheat—New crop prices; Club, 85c; Valley, 87c; bluestem, 90c; red Russian, 85c. Flour—Hard wheat patent, \$4.80; straight, \$4.30; graham, \$4.50 @ 4.75; rye, \$3; whole-wheat flour, \$4.50 @ \$5; Valley flour, \$4.40; Dakota, \$6.25 @ \$6.50; Eastern rye \$6.50; Pillsbury, \$7; Corvallis, \$4.06.

Grain bags—Domestic, 8 7-8; Calcutta, 9c.

Rye \$1.25 @ \$1.30 per cwt. Buckwheat—\$30 per ton.

Barley—Producers' prices; Brewing, \$27.50; feed, \$26; rolled, \$28.75 @ 29.00. Corn—Whole, \$32; cracked, \$33 per ton.

Mill feed—City bran, \$19; country bran, \$20.00; city shorts, \$20.00; country shorts, \$22.50; chop, \$17.

Oats—Producers' prices, White, \$28; gray, \$27.

Hay—Valley timothy, \$15 @ \$17; Eastern Oregon, \$18 @ \$20; clover, \$11; cheat, \$11; alfalfa, \$13; grain hay, \$14 @ 18.

Cereal foods—Rolled oats, cream, 90-lb sacks, \$8; lower grades, \$6 @ 7; oatmeal, steel cut, 40-lb sacks, \$8.50; 9-lb sacks, \$4.50 per bale; oatmeal (ground) 40-lb sacks, \$8 per bbl; 9-lb sacks, \$4.25 per bale; split peas, \$4.25 per 100—sacks; 25-lb boxes, \$1.25; pearl barley, \$4 per 100 lbs; 25-lb boxes, \$1.25 per box; pastry flour, 10-lb sacks, \$6.50 bbl.

Fresh Meats and Fish.

Oysters—Shoalwater Bay, per gallon, \$2.25; per sack, \$4.50; Toke Point, \$1.60 per 100; Olympia (120 lbs), \$6; Olympia, per gallon, \$2.25.

Fresh meats—Veal, medium, 75 to 100 lbs, \$8 @ 9; 100 to 150 lbs, 7 @ 8; 150 to 200 lbs, 6 @ 7; 200 lbs and over, 5 @ 6; pork, 8 @ 9; hams, 7 @ 8; beef, bulls, \$3 @ 4; cows, \$2 @ 3; steers, \$1 @ 2; muttons, medium size, 7 @ 8; large and coarse, 4 @ 6; spring lambs, dressed, 9 @ 9 1/2.

Fish—Halibut, 7c; black cod, 8c; black bass, per pound, 20c; striped bass, 13c; smelt, 7c; herring, 5c; flounders, 6c; catfish, 11c; shrimp, 10c; perch, 6c; strurgeon, 12c; sea trout, 18c; tom cod, 7c; Chinook salmon, 8c; silversides, 7c; steelheads, 9c.

Clams—Hardshell, per box, \$2.40; razor shells, 9c.

Tropical fruits—Bananas 5 @ 5 1/2 lb; lemons, 1 @ 1 1/2 lb; grapes 75c @ \$1.50 crate; grapefruit, \$5.00 crate; limes, 75c @ \$1.00 per 100; huckleberries, 6 @ 7c lb; peaches, 60c @ \$1.00 box; pears, \$1.00 @ 1.25 box; watermelons, 1c per lb; grapes 75c @ 1.00 crate; cantaloupes, 75c @ \$1.25 crate; casabas, \$2 dozen.

Dried fruits—Apples, evaporated, 5 @ 9c pound; apricots, 20c; peaches, 13c; pears, 13c; prunes, Italian, 4 @ 5c; or clams, \$2.25 per box.

French, 3 @ 4c; figs, California blacks, 5 3-4c, California whites, 6c, Smyrna, 20c; plums, pitted, 6c.

Domestic fruits—Apples, \$1.00 @ 1.75 box; crab, 30 @ 50c box; quinces, 75c @ \$1.25.

Vegetables.

Cabbage—Lb., 1 1-4 c; cauliflower, \$1 @ 1.25 doz; celery, 50c @ 1.00 doz; parsley, 25c doz; hot-house lettuce, 75c box; spinach, box, \$1.25; Brussels sprouts, 9c lb; artichokes, 75c @ \$1.00 doz; okra, 25c lb; tomatoes, 25 @ 35c box; Summer squash, 15 @ 20c doz; Lima beans, 8c lb; cucumbers, 20 @ 25c doz; eggplant, \$1.50 @ \$1 @ 1.25 sack; pumpkins, \$1.15 @ 1.75 crate; peppers, 5 @ 7c lb; green @ 1c per cwt.

Potatoes—New, 85c @ 90c per cwt; sweets, 2 1-4 @ 2 1/2c pound.

Produce.

Eggs—Ranch, candled, 33 @ 34c. Butter—Country creamery, 30 @ 35c; city creamery, 35c; store, 20 @ 21; butter fat, 33c.

Cheese—Young America, 18c; Oregon full cream, flats, 17c.

Honey—Dark, 10 @ 11c; amber, 12 @ 13c.

Poultry—Old roosters, 7 @ 8c; pound; 13c; fancy white, 14 @ 15c.

Hens, 11 @ 12c lb; Springs, 10 @ 11c; dressed stock, 1 @ 1 1/2 higher than live; ducks, old, 10 @ 11c; young, 12 @ 13c; turkeys, young, 17 @ 18c; old, 16c per lb; geese, old, 7 @ 8c, young, 8 @ 9c; pigeons, \$1 @ 1.25 per dozen; squabs, \$1.75 @ 2 per dozen.

Groceries, Provisions, Etc.

Sugar, sack basis—D. C., \$5.07 1/2; XX, \$5.47 1/2; best, \$5.37 1/2; Golden C, \$4.97 1-2; extra C, \$5.07 1/2; powdered, \$5.07 1-2; cube, \$5.82 1/2; fruit or berry sugar, \$5.57 1/2; boxes, 50c cwt advance over sack basis (less 1-4c if paid for in 15 days).

Onions—Oregon, \$2 @ 2.25 per 100 lbs. Coffee—Mocha, 25 @ 28c; Java, good, 20 @ 24c; Java, ordinary, 17 @ 20c; Costa Rica, fancy, 15 1/2 @ 17c; Costa Rica, good, 12 @ 15c; Arbuckle, \$16.50 cwt; Lion, 15 3-4c per lb; Columbia coffee, 14c; Salvador, 11 1/2 @ 14c.

SINGLE TAX CONFERENCE.

NEW YORK, Nov. 7.—The American Single Tax conference will be held in this city on Monday and Tuesday, November 18 and 19. The conference is to be an executive affair, but the results will be announced at the conclusion of the meeting. Among those who will attend are Reformer Joseph L. F. G. Garvin of Rhode Island; Tom L. Johnson, Brand Whitlock of Toledo; F. C. Howe of Cleveland and Raymond Happlies of Chicago.

Rings Dyspepsia Tablets do the work. Stomach trouble, dyspepsia, indigestion, bloating, etc., yield quickly. Two days' treatment free. Ask your druggist for a free trial. Sold by Frank Hart's Drug Store.

AMERICAN BUYS BALLOON.

Pommern, Which Won Cup Will Stay in This Country.

NEW YORK, Nov. 7.—Oscar Erbsloeh's international cup winning balloon Pommern, which the German aeronaut brought over to compete in the James Gordon Bennett race as St. Louis has been sold to Dr. Julian P. Thomas of this city.

Before coming to this country Mr. Erbsloeh used his balloon in the big race from Brussels and won first prize, traveling over 600 miles, so for a new balloon its record of two long distance first prizes is a notable one. Dr. Thomas made arrangements to make first ascent in the Pommern on Saturday from the Point Breeze track grounds, Philadelphia. He will be accompanied by Mrs. Thomas, Oscar Erbsloeh and Captain Lovelance. The balloon has a capacity of about 79,000 cubic feet.

INJUNCTION OBTAINED.

Fight for Control of Big Corporation Assumes New Phase.

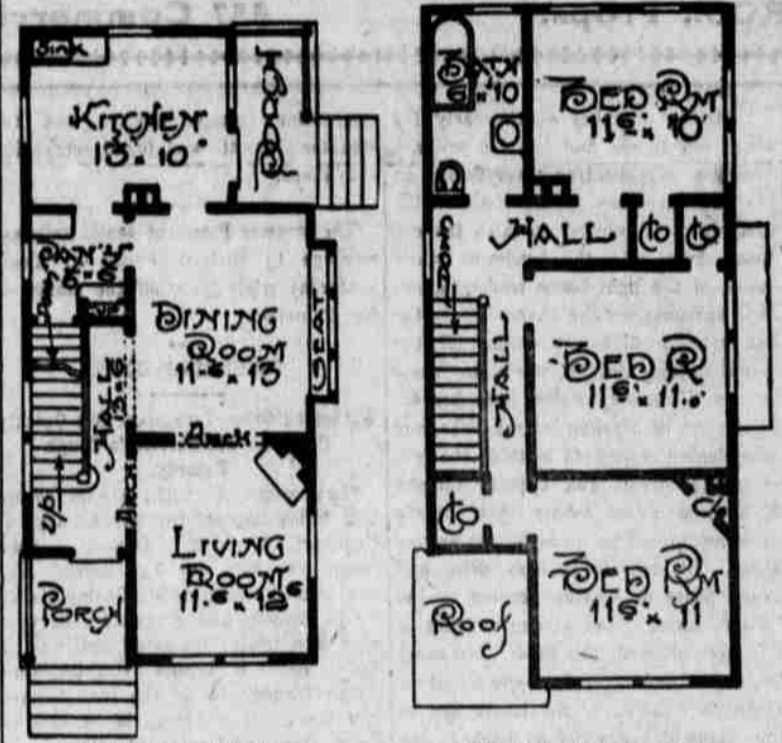
NEW YORK, Nov. 7.—The fight for the control of the Lake Superior corporation, a \$40,000,000 concern, which succeeded the old consolidated Lake Superior Company, assumed a new phase yesterday, when an injunction

Modern Colonial Cottage. Especially Designed For Narrow Lot—Estimated Cost, \$2,000.

Copyright, 1907, by J. H. DAVERMAN & SON, Grand Rapids, Mich.



PERSPECTIVE VIEW.



FIRST FLOOR PLAN.

SECOND FLOOR PLAN.

This six room dwelling, 19 by 36 feet over all, is very suitable for a narrow lot and has been designed especially for such, giving sufficient room for first and second story arrangement. The parlor and living room open up nicely together. The kitchen is of sufficient size, and pantry communicates between same and living room. This dwelling is intended to have a full seven foot stoned up basement under the whole, with a nine foot story height for first and second story side walls shingled. Hardwood finish for parlor, living room and hall; chambers and kitchen, Georgia pine. Estimated cost, with full plumbing, mantel and grate, \$2,000.

J. H. DAVERMAN & SON.

November Tide Table.

Table with tide data for November 1907, showing high and low water times and heights for various days of the month.

was obtained restraining J. Taitell Lea, president of the First National Bank of Philadelphia, from voting fifty thousand shares of stock which had been deposited as collateral for loans. This action was taken in order to prevent the Philadelphia contingent from carrying a board meeting, which had been called yesterday in Jersey City. The fight for control of the management of the Lake Superior is between the New York and Philadelphia directors. The New York directors object to the management of the company's affairs by Charles D. Warren of Toronto, president of the company. They are seeking to reorganize the board, it is stated, with the idea of ousting Mr. Warren.

Because of the injunction the meeting called for yesterday was adjourned until January 11.

No Students, No Cocaine, No Gas. We Challenge the World

We will forfeit \$1000 to any charitable institution for any Dentist who can compete with us in crown and bridge work, or teeth without plates. Pay no fancy fees until you have consulted us. Our continued success in our many offices is due to the uniform high-grade work done by years of experienced operators. The prices quoted below are absolutely the best opportunity to get your money's worth which has ever been offered. We use nothing but the best materials.

Best Silver Fillings..... 50c Platinum Fillings..... \$1.00 Gold & Platinum Alloy Fillings..... \$1.25 Gold Fillings..... \$2.00 to \$3.00 S. S. White Laysan Crown..... \$5.00 Gold Crowns, best ask, extra heavy..... \$5.00 Bridge work, per tooth, best work..... \$5.00 Best Rubber Plate, S. S. white teeth..... \$5.00 Aluminum-lined Plate..... \$10 to \$15 A binding guarantee given with all work for 10 years.

VEGETABLE VAPOR Used only by us for Painless Extraction of teeth, 50c. Read What Mrs. Jessie Level Says. I had 12 teeth extracted by the use of Vegetable Vapor, absolutely painless—the most pleasing effect—and highly recommend the method. Yours truly, MRS. JESSIE LEVEL, Lafayette, Oregon. NERVOUS PEOPLE. And those afflicted with heart weakness can have their teeth extracted and filled without the least pain whatever.

Chicago Dental Parlors Northwest Cor. Commercial and 11th. Phone Red 2244. The largest and best-equipped dental establishment in the Northwest. Seventeen offices in the United States. LADY IN ATTENDANCE. See that you are in the right office. Open Sunday, 9 to 2.

Put Your Money in REAL ESTATE! Plan your Work then Work Your Plan.

Western Realty Co., 495 Commercial Street, Astoria, Oregon

WHEN YOU WANT PRICES THAT ARE RIGHT Write us, we're here for that purpose The Work We Do Anything in the electrical Business. Bell's House Phones Inside wiring and Fixtures installed and kept in repair. We will be glad to quote you prices. OUR PRICES WILL DO THE REST STEEL & EWART 426 Bond Street. Phone Main 388.

THE TRENTON First-Class Liquors and Cigars 602 Commercial Street. Corner Commercial and 14th. ASTORIA, OREGON

TIME CARD Astoria & Columbia River R. R. Co. Effective, Monday, September 9, 1907—Pacific Time.

Table with train schedules, including times and distances for various routes like Astoria to Portland and Astoria to Clatsop Beach.

Nos. 26 and 28 run from Astoria to Clatsop Beach via Ft. Stevens. No. 22 runs from Portland to Astoria and Clatsop Beach direct. No. 24 runs from Portland to Astoria only. No. 30 runs from Astoria to Clatsop Beach direct. No. 21, 25 and 29 run via Ft. Stevens. No. 23 runs from Clatsop Beach to Astoria and Portland direct. Additions: train will be run from Astoria to Ft. Stevens and return on Sundays, leaving Astoria 11:30 a. m., arrive Ft. Stevens 12:25 p. m. Returning leaves Ft. Stevens 2:00 p. m., arrives Astoria 2:45 p. m. Trains marked \* run daily; † Telegraph stations. CONNECTIONS—At Portland, with all trans-continental lines. At Goble, with Northern Pacific Railway Co. At Astoria with steamers for San Francisco and Tillamook and Ilwaco Railway & Navigation Co.'s boat and railway. Through tickets sold to and from all points in the East and Europe. For further particulars apply to, R. H. JENKINS, Gen. Ft. & Passng. Agt., Astoria, Or.

I had about given up hope of ever...