



The Careful Housewife uses no other.

Absolutely Pure.

ROYAL BAKING POWDER CO., NEW YORK.

PORTLAND MARKETS

Latest Quotations in the Portland Markets.

Complete Market Reports Corrected Each Day, Giving the Wholesale Prices of Commodities, Farm Produce and Vegetables.

PORTLAND, March 27.—Lighter receipts of eggs marked the past few days, with the result that the price has again advanced, as high as 25c being quoted in several houses, though in a majority 22 @ 23 1-2c is named as top.

Butter holds steady at the recent advance and stocks are still low.

Oats—White, \$25.50 @ 26; gray, \$24 @ 25. Barley—Brewing, \$22 @ 22.50; feed, \$21 @ 21.50; rolled, \$22 @ 23. Rye—\$1.40 per cwt.

Cereal Foods—Rolled Oats, cream, 50-lb sacks, \$7.00; lower grade, \$5.50 @ 6.50; oat meal, steel cut, 45-lb sacks, \$8.00 per bbl; 9-lb sacks, \$4.25 per bale; oat meal (ground), 45-lb sacks,

\$7.50 per bbl; 9-lb sacks \$4 per bale; split peas, \$4.25 per 100lb sacks; 25-lb boxes, \$1.25; pearl barley, \$4.00 per 100 lbs; 25-lb boxes, \$1.25 per box; pastry flour, 10-lb sacks, \$2.30 per bbl.

Grain bags—Foreign and domestic, 1 1-4c.

Produce.

Butter—Country creamery, 32 1-2c; city creamery, 35c; store, 15 @ 19c; butter fat, 23 1-2c. Poultry—Old roosters, 9 @ 10c; hens and springs, 12 1-2 @ 14c; dressed, 14 @ 15c; ducks, 15 @ 16c; turkeys, 14 @ 17c; dressed, 19 lb 20c; fancy, 21 @ 23 1-2c; geese, live, 9 @ 10c; dressed, 11 @ 12c; pigeons, per doz, \$1 @ \$1.25; squabs, \$1.75 @ 2.

Eggs—Oregon ranch, 17c per dozen. Cheese—Young America, 16 @ 16 1-2c; Oregon full cream, flats, 15 @ 15 1-2c; Honey, Dark—10 1-2 @ 11c; amber, 12 @ 13c; fancy white, 14 @ 15c.

Fruits. Tropical fruits—Bananas, 5c per lb; pineapples, \$4.50 @ 5.50 per dozen; Lemons, \$3.00 @ 5.00 box; oranges, \$2.75 @ 3.00; grapefruit, \$4.50 crate; limes, 75c and \$1.25 per 100; Malaga grapes, \$7.75 @ 8.50 bbl; Tangerines, \$1.85 @ 2 box.

Domestic fruits—Apples, common, 85c @ \$1; fancy, \$1.50 @ 2.50 box; Lady apples, \$1.25 @ 1.75 box; pears, \$1 @ 1.75 box; cranberries, \$10 @ 11 bbl; persimmons, \$1.50 box. Vegetables. Potatoes—\$1.25 @ 1.50 per cwt; Cabbage—Lb., 2 1-2 @ 3c; cauliflower, 2 @ 2.50 @ 2.75 per crate; parsley 25c per dozen; hot house lettuce, \$1.50 per box; head, 40c doz; spinach, 3 @ 5c lb; artichokes 75c @ 1.25 per dozen; peas, 15c lb; garlic, 7 @ 9c lb; red peppers, dry, 20 @ 25c lb; celery, 65 @ 85c per doz; egg plant \$1.50 per crate; okra, \$1.75 box; sprouts, 9c lb; tomatoes, Mex., \$2.75 @ 4; Cal., \$3; asparagus, 25c lb.

Onions—Per sack, \$1 @ 1.25; carrots, \$1 @ 1.25; beets, \$1.25 @ 1.50; horseradish 7 @ 8c lb.

Fresh Meats and Fish. Fresh meats—Veal, medium, 75 to

Provisions—Hams, to stas, 14c; hams, picnic 10c; bacon, regular, 18c; bacon, fancy breakfast 20c; dry salt sides, 11c; backs dry salt 11 1-4c. Salt—Bales of 75-lb, 1.80; bales of 60-lb, 1.60; bales of 40-lb, 1.40; bales of 15-10c, bale, \$1.00; bags, 50c; fine, ton, \$12.00; bags, 50 lbs, genuine Liverpool, ton, \$18.00; bags, 50 lbs, 4-ground, 100a, ton, \$9.00; R. S. V. P., 20 5-lb cartons, \$2.25; R. S. V. P., 24 3-lb cartons, \$1.75; Liverpool lump, ton, \$19.50.

Oil, Lead, Etc.

Coal oil—Pearl and astral oil cases, 15c per gallon; water white oil, iron barrels, 13c; wood barrels, 16c; cocain oil, cases, 21c; claims oil cases, 27c; extra star, cases, 22c; headlight oil cases 21c; iron barrels, 15c. Benzine—Sixty-three degrees, cases, 20c; iron barrels, 15c.

Turpentine—In cases, 86c; in wood barrels, 83c; in iron barrels, 70c; in 10-case lots, 85c. Linseed oil—Raw, 5-barrel lots, 47c; 1-100 lbs, 8 1-2 @ 9c; 100 to 150 lbs, 7 1-2 @ 8c; 150 to 200 lbs, 6 @ 6 1-2c; 200 lbs and over, 5 1-2 @ 6c; pork, 8 1-2 @ 9c; heavies, 7 @ 8c; beef, bulls, 2 1-2 @ 3c; cows, 5 @ 5 1-2c; steers, 5 1-2 @ 6 1-2c; mutton, medium size, 8 @ 8 1-2c; large, 6 @ 7c.

Clams—Hardshells, per box, \$2.75; razor clams, \$2.25 per box. Fish—Halibut, 9c; black cod, 7c; black bass, per pound, 18c; striped bass, 13c; herring, 5c; flounders 5c; catfish, 10c; shrimp, 16c; perch, 6c; sturgeon, 11c; sea trout, 18c; silver-sides, (frozen), 8 1-2c; steelheads, 10c; tom cods, 7c; smelts 2c.

Oysters—Shoalwater Bay, per gallon, \$2.25; per sack, \$4.50; Toke Point, \$1.50 per 100; Olympias, (120 lbs.) 9c; Olympias, per gallon, \$2.25.

Groceries and Provisions.

Nuts—Walnuts, No. 1, soft shell, 17c; No. 1 hard shell, 16c; Chile, 13c; almonds, 17 @ 18c; filberts, 16c; Brazil, 16c; pecans, 13 @ 15c; hickory, 9c; Virginia peanuts, 6c; Jumbo Virginia peanuts, 8c; Japanese peanuts, 5c; chestnuts, Italian, 14c; coconuts, dressed, 85 @ 90c.

Coffee—Mocha 24 @ 25c; Java, fancy, 26 @ 27c; Java, good, 20 @ 24c; Java, ordinary, 17 @ 20c; Costa Rica, fancy, 19 @ 20c; Costa Rica, good, 12 @ 15c; Arabica, 16c per lb; Lion, 14c per lb; Columbia coffee, 14c; Salvador, 11 @ 15c.

barrel lots, 48c; in cases, 53c. Boiled, 5-barrel lots, 49c; 1-barrel lots 50c; in cases, 55c.

Beeswax—Good, clean and pure, 21 @ 24c per lb. Gasoline—Stove gasoline, case, 24c; iron barrels, 19c; 80 degrees gasoline, cases, 33c; iron barrels or drums, 27c; 72 degrees cases, 26c; iron barrels, 20c; engine distillate, iron barrels, 3c.

Oregon grape root—Per 100 lbs, \$3 @ 4. Rope—Pure Manila, 14c; standard, 13c; Sisal, 11c; Lale brand Sisal, 10c. Mohair—Choice, 28 @ 30c.

Wire nails—present base at \$2.60. Feathers—Geese, white, 35 @ 40c; geese, gray or mixed, 25 @ 30c; duck, white, 15 @ 20c; duck mixed, 12 @ 15c.

Wool—Valley 22 @ 25c; Eastern Oregon, 18 @ 22c as to shrinkage. Casaca sagrada (Chittim bark)—24 @ 4c.

Hops—Choice, 1906, 11 @ 12c; prime, 10 @ 11c.

Lead—Strictly pure white lead and red lead in ton lots, 7c; 500-lb lots, 8c; less than 500 lbs, 8c.

Olive oil—California, per gallon, \$2.75; quarts, per case, dozen, \$7.25; pints, 2 dozen, \$8.50; 1-pint 4 dozen, \$9.

Canned salmon—Columbia River, 1-lb talls, 1.85; 2-lb talls, \$2.50; fancy, 1-lb flats, \$2.00; 1-lb fancy flats, \$1.25; fancy 1-lb ovals, \$2.75; Alaska talls, pink, 90c; red, 1.45; nominal, 2a, tall, \$2.00.

SYSTEM

in your office as well as in other departments

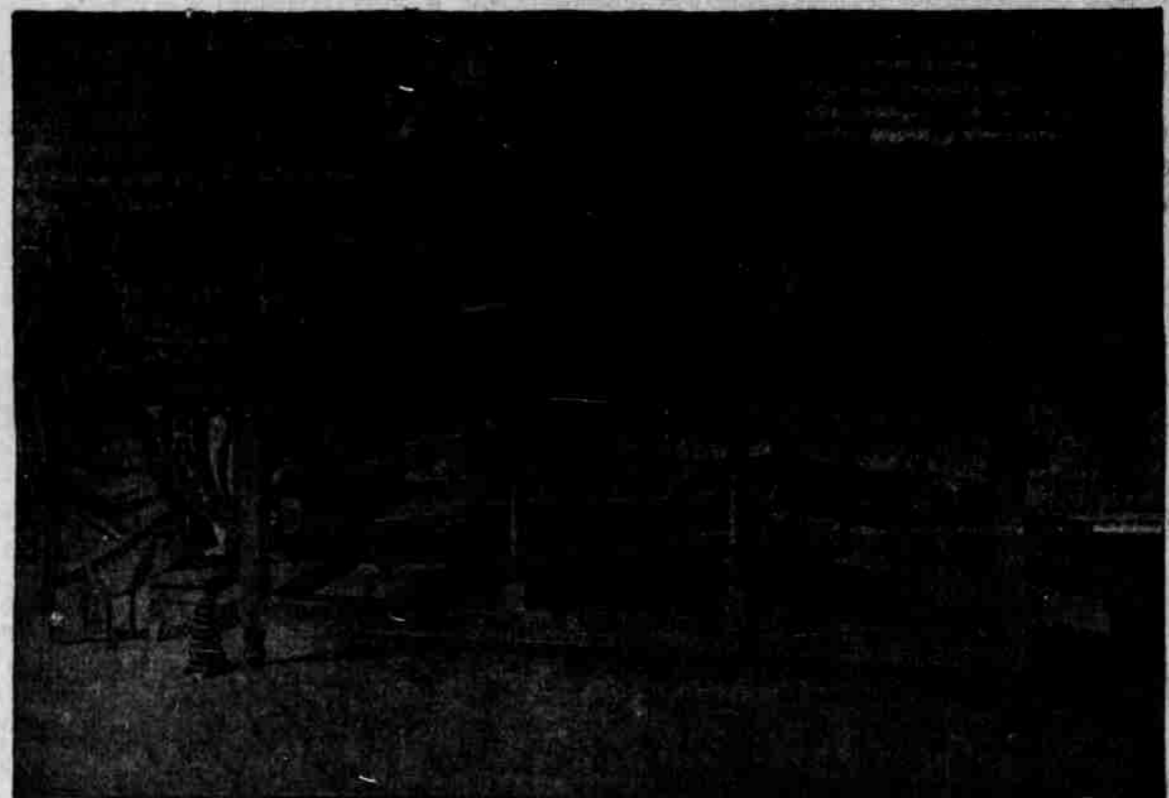
Is What Counts

We make all kinds of

BOOKS

but our specialty is systems for the

LUMBER BUSINESS



LATEST STYLE RULING MACHINE FOR RULING PAPER.

The majority of saw mills in the Northwest use our productions.

We make all kinds of

Voucher Records, Car Shipment Sales Books, Cargo Shipment Sales Books, Pay Roll Ledgers, Log Registers,

and a full line of Lumber Blanks.

SEND FOR SAMPLES

The J. S. Dellinger Co. Astoria, Oregon.

TIDE TABLE, APRIL

Table with tide data for April 1907, including High Water and Low Water times for various days of the month.

Astoria & Columbia R. River R. Co

Table with shipping schedule information, including dates and times for various routes.

BROWN-FORMAN CO.

DISTILLERS LOUISVILLE, KENTUCKY

Old Forester Whiskey High in Quality and Price

Tucker Whiskey Best Value on the Coast

Major Paul Whiskey Noted for its Fine Flavor

AMERICAN IMPORTING CO DISTRIBUTORS ASTORIA, OREGON