

PORTLAND MARKETS

Latest Quotations in the Portland Markets.

Complete Market Reports Corrected Each Day, Giving the Wholesale Prices of Commodities, Farm Produce and Vegetables.

PORTLAND, Ore., March 26.—There is so slight an improvement in city creamery output as to be hardly noticeable in the butter market.

City creameries say they do not look for much better supplies of cream for some weeks, especially if the cold weather continues.

Oats—White, \$25.50 @ 26; gray, \$24.00 @ 25.

Barley—Brewing, \$22@22.50; feed, \$21@21.50; rolled, \$22@23.

Rye—\$1.40 per cwt.

Hay—Valley, timothy, \$13@14; eastern Oregon, \$12@13; clover, \$7@7.50; cheat, \$7@7.50; alfalfa, \$11.50; grain hay, \$7@8; vetch, \$7.50@8.

Buckwheat—\$26 per ton.

Millets—Middlings, \$25.00; chop, \$15; bran, \$16.00; shorts, \$18.00.

Corn—Whole, \$26@27; cracked, \$27 @ 28 per ton.

Flour—Hard wheat patent, \$3.90; straight, \$3.35; graham, \$3.50; rye, \$5; whole wheat flour, \$3.75; valley flour, \$3.40@3.45; Dakota, \$5.30@5.60; Eastern rye, \$5.40; Pillsbury, \$4.20; Corvallis, \$3.70.

Cereal Foods—Rolled Oats, cream, 90-lb sacks, \$7.00; lower grade, \$5.50@6.50; oat meal, steel cut, 45-lb sacks, \$5.00 per bbl.; 9-lb sacks, \$4.25 per bale; oat meal (ground), 45-lb sacks, \$7.50 per bbl.; 9-lb sacks \$4 per bale; split peas, \$4.25 per 100-lb sacks; 25-lb boxes, \$1.25; pearl barley, \$4.50 per 100-lb; 25-lb boxes, \$1.25 per box; pastry flour, 10-lb sacks, \$2.50 per bbl.

Grain bags—Foreign and domestic, \$ 1-4c.

Produce.

Butter—Country creamery, 33 1-2c; city creamery, 35c; store, 13 @ 13c; butter fat, 33 1-2c.

Poultry—Old roosters, 9 @ 10c; hens and springs, 12 1-2 @ 14c; dressed, 14 @ 15c; ducks, 15 @ 16c; turkeys, 16 @ 17c; dressed, 19 lb 20c; fancy, 21 @ 22 1-2c; geese, live, 9 @ 10c; dressed, 11 @ 12c; pigeons, per doz, \$1 @ \$1.25 squabs, \$1.75 @ 2.

Eggs—Oregon ranch, 17c per dozen. Cheese—Young America, 16 @ 16 1-2 c; Oregon full cream, flats, 15 @ 15 1-2 c; Honey, dark—10 1-2 @ 11c; amber, 11 @ 12c; fancy white, 14 @ 15c.

Fruits.

Tropical fruits—Bananas, 5c per lb. pineapples, \$4.50 @ 5.50 per dozen; lemons, \$2.00 @ 5.00 box; oranges, \$2-75 @ 3.00; grapefruit, \$4.50 crate; limes, 7c and \$1.25 per 100; Malaga

grapes, \$7.75 @ 8.50 bbl; Tangerines, \$1.95 @ 2 box.

Domestic fruits—Apples, common, 85c @ \$1; fancy, \$1.50 @ 2.50 box; Lady apples, \$1.25 @ 1.75 box; pears, \$1 @ 1.75 box; cranberries, \$10 @ 11 bbl; persimmons, \$1.50 box.

Vegetables.

Potatoes—\$1.25 @ 1.50 per cwt; Cabbage—Lb., 3 1-2 @ 3c; cauliflower, \$1.25 @ 2.75 per crate; parsley 25c per dozen; hot house lettuce, \$1.50 per box; head, 40c doz; spinach, 3 @ 5c lb.; artichokes 75c @ 1.25 per dozen; peas, 15c lb.; garlic, 7 @ 9c lb.; red peppers, dry, 20 @ 25c lb.; celery, 65 @ 85c per doz.; egg plant \$1.50 per crate; okra, \$1.75 box; sprouts, 9c lb.; tomatoes, Mex., \$3.75 @ 4; Cal., \$3; asparagus, 25c lb.

Onions—Per sack, \$1 @ 1.25; carrots, \$1 @ 1.25; beets, \$1.25 @ 1.50; horseradish 7 @ 8c lb.

Fresh Meats and Fish.

Fresh meats—Veal, medium, 75 to 100 lbs., 8 1-2 @ 9c; 100 to 150 lbs., 7 1-2 @ 8c; 150 to 200 lbs., 6 @ 6 1-2c; 200 lbs and over, 5 1-2 @ 6c; pork, 5 1-2 @ 6c; hams, 7 @ 8c; beef, bulls, 2 1-2 @ 3c; cows, 5 @ 5 1-2c; steers, 5 1-2 @ 6 1-2c; mutton, medium size, 8 @ 8 1-2 c; large, 6 @ 7c.

Clams—Hardshell, per box, \$2.75; razor clams, \$2.25 per box.

Fish—Halibut, 9c; black cod, 7c; black bass, per pound, 15c; striped bass, 13c; herring, 5c; flounders 5c; catfish, 10c; shrimp, 10c; perch, 6c; sturgeon, 11c; sea trout, 15c; silver-sides, (frozen,) 8 1-2c; steelheads, 10c; tom cods, 7c; smelts 5c.

Oysters—Shoalwater Bay, per gallon, \$2.25; per sack, \$4.50; Toke Point, \$1.60 per 100; Olympia, (120 lbs.) 95; Olympia, per gallon, \$2.25.

Groceries and Provisions.

Nuts—Walnuts, No. 1 soft shell, 17c; No. 1 hard shell, 16c; Chile, 13c; almonds, 17@18c; filberts, 16c; Brazil, 16c; pecans, 13@14c; hickory, 8c; Virginia peanuts, 6c; Jumbo Virginia peanuts, 9c; Japanese peanuts, 5c; chestnuts, Italian, 14c; coconuts, dozen 85@90c.

Coffee—Mocha 24@25c; Java, fancy, 26@27c; Java, good, 20@24c; Java, ordinary, 17@20c; Costa Rica, fancy, 18@20c; Costa Rica, good, 12@14c; Arabica, 16@18c per lb; Lion, 14@16c per lb; Columbia coffee, 14@16c; Salvador, 11@15c.

Provisions—Hams, to size, 14c; hams, picnic 10c; bacon, regular, 18@19c; fancy breakfast 20c; dry salt sides, 11@12c; backs dry salt 11 1-4c.

Salt—Bales of 75-lb, bales, \$1.50; bales of 60-lb, bales, \$1.00; bales of 40-lb, bales, \$1.00; bales of 15-lb, bales, \$1.00; bags, 50c; fine, ton, \$12.00; bags, 50 lbs, genuine Liverpool, ton, \$18.00; bags, 50 lb, 1-ground, 100c, ton, \$9.00; R. S. V. P., 20 5-lb cartons, \$2.25; R. S. V. P., 24 3-lb cartons, \$1.75; Liverpool lump, ton, \$19.50.

Oil, Lead, Etc.

Coal oil—Pearl and astral oil cases, 19c per gallon; water white oil, iron barrels, 13c; wood barrels, 16c; cocene oil, cases, 21c; elaine oil cases, 27c; extra star, cases, 23c; headlight oil cases 21c; iron barrels, 15c.

Benzine—Sixty-three degrees, cases, 50c; iron barrels, 15c.

Tar-pentine—in cases, 86c; in wood barrels, 83c; in iron barrels, 79c; in 10-case lots, 85c.

Linseed oil—Raw, 5-barrel lots, 47c; 1-barrel lots, 49c; in cases, 53c. Boiled, 5-barrel lots, 49c; 1-barrel lots 50c; in cases, 55c.

Beeswax—Good, clean and pure, 21 @ 24c per lb.

Gasoline—Stove gasoline, case, 24c; iron barrels, 19c; 66 degree gasoline, cases, 33c; iron barrels or drums, 27c; 72 degree cases, 26c; iron barrels, 20c; engine distillate, iron barrels, 9c.

Oregon grape root—Per 100 lbs, \$3@4.

Rope—Pura Manila, 14c; standard, 13c; Sisal, 11c; Isle brand Sisal, 10c.

Mohair—Choice, 28@30c.

Wire nails—present base at \$2.60.

gray or mixed, 25@30c; duck white, 15 @20c; duck mixed, 12@15c.

Feathers—Geese, white, 35@40c; geese, Wool—Valley 22@25c; Eastern Oregon, 18@22c as to shrinkage.

Casaca sagrada (Chittim bark)—23 @4c.

Hops—Choice, 1905, 11lb12c; prime, 10@11a.

Lead—Strictly pure white lead and red lead in ton lots, 71c; 500-lb lots, 8c; less than 500 lbs, 8c.

Olive oil—California, per gallon, \$2.75; quarts, per case, dozen, \$7.25; pints, 2 dozen, \$8.50; 1-pint 4 dozen, \$9.

Canned salmon—Columbia River, 1-lb talls, 1.85; 2-lb talls, \$2.50; fancy, 1-lb flats, \$2.00; 1-lb fancy flats, \$1.25; fancy 1-lb ovals, \$2.75; Alaska talls, pink, 90c; red, \$1.45; nominal, 2c, tall, \$2.00.

Rice—Imperial Japan, No. 1, \$5.95; Southern, Japan, \$5; broken, 4c; head, fancy, 7c; head, choice, 6c.

Do Not Crowd the Season.

The first warm days of spring bring with them a desire to get out and enjoy the exhilarating air and sunshine. Children that have been housed up all winter are brought and you wonder where they all came from. The heavy winter clothing is thrown away and many shed their flannels. Then a cold wave comes and people say that grip is epidemic. Colds at this season are even more dangerous than in mid-winter, as there is much more danger of pneumonia. Take Chamberlain's Cough Remedy, however, and you will have nothing to fear. It always cures, and we have never known a cold to result in pneumonia when it was used. It is pleasant and safe to take. Children like it. For sale by Frank Hart and Leading druggists.

TEXTILE WORKERS STRIKE.

NEW YORK, March 25.—The first general strike of the Children's Cloak and Reeler Makers Union went in effect yesterday in 40 shops throughout the East Side against a declaration of the employers for the open shop and for a renewal of the agreement of last year. About one third of the strikers are women. In all about 3000 work ory are affected.

LISTEN

and remember the next time you suffer from pain—caused by damp weather—when your head nearly bursts from neuralgia—try Ballard's Snow Liniment. It will cure you. A prominent business man of Hempstead, Texas, writes: "I have used your liniment. Previous to using it I was a great sufferer from rheumatism and neuralgia. I am pleased to say that now I am free from these complaints. I am sure I owe this to your liniment." For sale at Hart's drug store.

SUNDAY TRAVEL TO PORTLAND

Increases and \$2.50 Round Trip Rate via A. & C. R. R. is Popular. Travel from this city to Portland on Sunday at the low round trip rate of \$2.50 is on the increase and many enjoy that day in the metropolis each week. This rate will be continued throughout the winter and the volume of travel toward Portland every Sunday would indicate that the public appreciates it.

Many business men are shortsighted in not looking into things. They are daily losing money by not adopting the great Hollister Rocky Mountain Tea system. Makes them well and keeps them well. 35 cents.

BROWN-FORMAN CO. DISTILLERS LOUISVILLE, KENTUCKY

Old Forester Whiskey High in Quality and Price

Tucker Whiskey Best Value on the Coast

Major Paul Whiskey Noted for its Fine Flavor

AMERICAN IMPORTING CO. DISTRIBUTORS ASTORIA, OREGON

TIDE TABLE, APRIL

Table with columns for High Water, Low Water, and dates from Monday to Tuesday in April 1907. Includes sub-tables for APRIL, 1907 and APRIL, 1907.

Astoria & Columbia R. River R. Co.

Effective Sunday, September 9, 1906—Pacific Time.

Table with columns for time and location, listing various points along the coast like PORTLAND, GOBLE, RAINIER, CLATSkanie, etc.

SYSTEM

in your office as well as in other departments

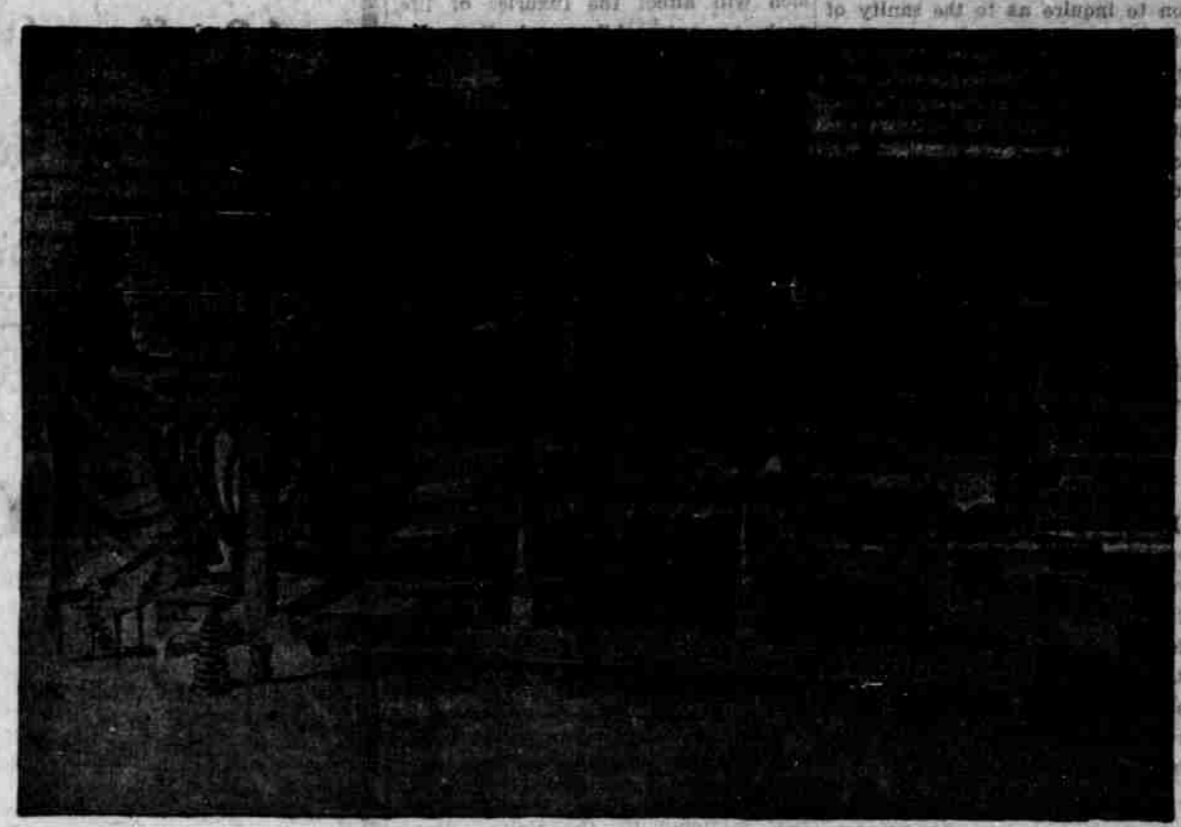
Is What Counts

We make all kinds of

BOOKS

but our specialty is systems for the

LUMBER BUSINESS



LATEST STYLE RULING MACHINE FOR RULING PAPER.

The majority of saw mills in the Northwest use our productions.

We make all kinds of

- Voucher Records, Car Shipment Sales Books, Cargo Shipment Sales Books, Pay Roll Ledgers, Log Registers,

and a full line of Lumber Blanks.

SEND FOR SAMPLES

The J. S. Dellinger Co. Astoria, Oregon.