

ASK THE AGENT FOR
TICKETS

VIA

**GREAT
NORTHERN
RAILWAY**

To Spokane, St. Paul, Minneapolis,
Duluth, Chicago, St. Louis, and all
points east and south.

OVERLAND TRAINS DAILY
The Flyer and The Fast Mail
SPLENDID SERVICE

UP TO DATE EQUIPMENT
COURTEOUS EMPLOYEES
Daylight trip across the Cascade and
Rocky Mountains.
For tickets, rates folders and full in-
formation call on or address

H. DICKSON,
City Ticket Agent.
122 Third Street, Portland, Or.
S. G. YERKES, G. W. P. A.,
612 First Avenue, Seattle, Wash.

**WE GIVE EXPEDITED
SERVICE ON FREIGHT
ROUTE YOUR SHIPMENTS
VIA GREAT NORTHERN**
Full information from
WM. HARDER, General Agent.
Portland, Ore.
The World's Fair Route.

Those anticipating an eastern trip,
or a visit to the Louisiana Purchase
exposition at St. Louis, cannot afford
to overlook the advantages offered by
the Missouri Pacific Railway, which, on
account of its various routes and gate-
ways, has been appropriately named
"The World's Fair Route."

Passengers from the northwest take
the Missouri Pacific trains from Den-
ver or Pueblo, with the choice of either
going direct through Kansas City, or
via Wichita, Fort Scott and Pleasant
Hill.

Two trains daily from Denver and
Pueblo to St. Louis without change,
carrying all classes of modern equip-
ment, including electric lighted obser-
vation parlor cafe dining cars. Ten
daily trains between Kansas City and
St. Louis.

Write or call on W. C. McBride, gen-
eral agent, 134 Third street, Portland,
for detailed information and illustrat-
ed literature.

**The DENVER & RIO GRANDE
RAILROAD**

DELIGHTFUL ROUTE
DAYLIGHT RIDE
IZZY CRAGS
DEEP CANONS

A GOLDEN OPPORTUNITY

See nature in all her glorious beauty,
and then the acme of man's handi-
work. The first is found along the line
of the Denver & Rio Grande Railroad,
the latter at the St. Louis World's
Fair. Your trip will be one of pleas-
ure—make the most of it. For infor-
mation and illustrated literature write

W. C. McBRIDE, Gen. Agt.
Portland, Or.

**For San Francisco
every five days.**

Daily ex- cept Sun- day at am	Columbia River to Portland and Way landings	4 a m Daily ex- cept Mon
-------------------------------------	---	--------------------------------

Steamer Nahcotta leaves Astoria on
the tide DAILY EXCEPT SUNDAY,
FOR ILWACO, connecting there with
trains for Long Beach, Tioga and
North Beach points. Returning ar-
rives at Astoria same evening.
Through tickets to and from all prin-
cipal European cities.
G. W. ROBERTS, Agent,
Astoria, Ore.

NORTHERN PACIFIC

Fine Card of Trains

PORTLAND
Leaves Arrives
Puget Sound Limited. 7:35 a m 6:45 p m

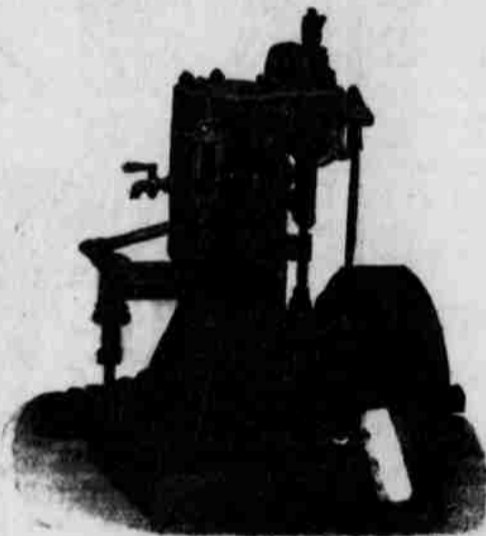
Kansas City-St. Louis
Special 11:10 a m 6:05 p m
North Coast Limited 8:00 p m 7:00 a m
Tacoma and Seattle Night
Express 11:45 p m 2:05 p m
Take Puget Sound Limited or North
Coast Limited for Gray's Harbor points
Take Puget Sound Limited for Olym-
pia direct.
Take Puget Sound Limited or Kan-
sas City-St. Louis Special for points
on South Bend branch.
Double daily train service on Gray's
Harbor branch.
Four trains daily between Portland,
Tacoma and Seattle.

When you have a good thing
Advertise It.

We do good commercial printing
Bring your printing to the
ASTORIAN Office.

Subscribe for the Morning Astorian

FISHERMEN



The 3½ horse-
power (horsepower
guaranteed) Wol-
verine Special 4
cycle gasoline en-
gine is absolutely
the best engine for
a fish boat because
you can run it
slow enough to be
used in handling
your net. Can you
say this of any
other engine you
have seen? Uses

less oil than any other engine on the market.

SATISFACTION GUARANTEED.

N. H. LUNDBERG, Agent,
Frankfort, Wash.

Famous Trains

The Southwest Limited Kansas City to
Chicago, The Overland Limited to Chicago
via Omaha, The Pioneer Limited St. Paul
to Chicago, run via

**Chicago, Milwaukee & St. Paul
Railway**

Each route offers numerous attractions.
The principal thing to insure a quick,
comfortable trip east is to see that your
tickets read via the Chicago, Milwaukee &
St. Paul Railway.

H. S. ROWE,
General Agent.

134 Third Street, Portland

Steamer "SUE H. ELMORE"

The Largest, Stanchest, Steadiest and most Seaworthy vessel
ever on this route. Best of Table and State Room Accom-
modations. Will make round trip every five days between

A S T O R I A
AND
T I L L A M O O K

Connecting at Astoria with the Oregon Railway & Navigation
Co. and Astoria & Columbia River R. R. for Portland, San
Francisco and all points East. For freight and passenger
rates apply to

Samuel Elmore & Co., Gen'l Agts., Astoria, Ore.

OR TO

A. & C. R. R. Portland, Oregon
Pacific Navigation Company, Tillamook, Oregon
O. R. & N. Company, Portland, Oregon

When You Are Buying Coal

Why not get the best there is? If you want
a good steady heat, no clinkers or dirt and but
little ash, be sure you get

AUSTRALIAN COAL

It is the most economical and convenient fuel
and is by far the best coal on the market.

ELMORE & COMPANY

Free Delivery. - - Phone 1961.