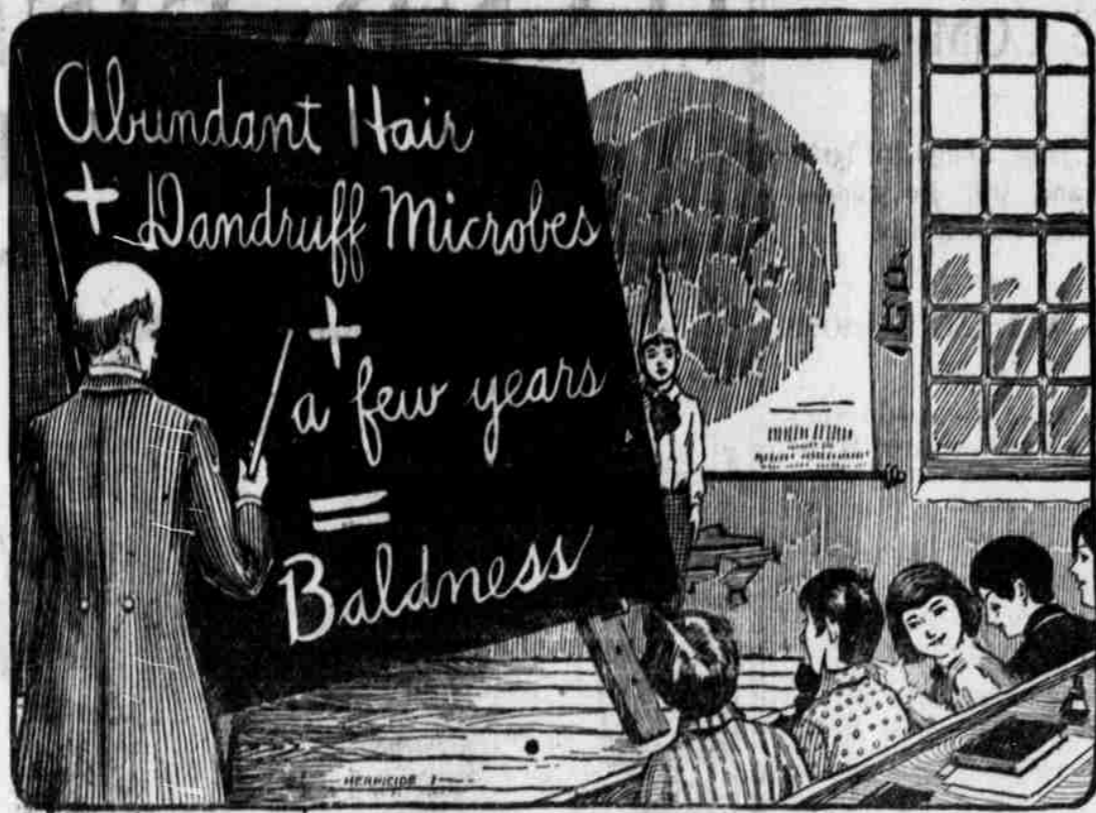


Readers  
Get  
All  
The  
World's  
News  
All  
The  
Time  
In  
The  
Morning  
Astorian

Advertisers  
Reach  
The  
Purchasing  
Public  
By  
Using  
The  
Columns  
Of  
The  
Morning  
Astorian



## Newbro's Herpicide

THE ORIGINAL REMEDY THAT "KILLS THE DANDRUFF GERM."

### SCHOOL CHILDREN.

Every school child should know that baldness is a contagious disease, caused by a microbe. Prof. Unna, of Hamburg, Germany, discovered that dandruff, itching scalp, falling hair, and final baldness are produced by a germ or microbe that passes from one head to another, where it burrows into the scalp and by multiplying and extending deeper and deeper into the hair follicles, saps the life of the hair root and produces baldness.

### IT TAKES YEARS

to produce complete baldness, for the action of the dandruff microbe is not constant in every case. It is governed by predisposition, by the state of health, by environment, but particularly by the endeavor made to combat the growth and development of the dandruff microbes, which can only be destroyed with Newbro's Herpicide.

This new antiseptic scalp germicide is past the experimental stage. It was made to destroy the germ that causes dandruff and falling hair, and by

coaxing energy back into the impoverished bulbs, it enables the hair to grow naturally and luxuriantly. Thousands of letters from physicians, clergymen and laymen tell the same story of its wonderful success.

### AN IDEAL HAIR DRESSING.

It is fortunate for those who understand the new rules for scalp cleanliness that the antiseptic qualities of Newbro's Herpicide make it the most delightful and refreshing hair dressing imaginable. Chronic baldness is incurable; save your hair, while you have hair to save.

### "ENTHUSIASTIC HERPICIDE FOLLOWERS."

"I am pleased with your Herpicide and consider it all that one could ask as a dressing and all that you claim for it. I tell all my friends there is nothing like Herpicide."

Seattle, Wash. (Signed) MRS. S. B. MARRICK.  
"I have given Newbro's Herpicide a fair trial and permit me to say that it is within itself a wonder. As a remedy for dandruff and falling hair I think it is far superior to anything in its line."  
Oakesdale, Wash. (Signed) R. E. MITCHELL.



A Healthy Hair.

## T. F. LAURIN

SPECIAL AGENT.

At Drug Stores \$1. Send 10c in stamps for samples to Herpicide Co., Detroit, Mich.

"Destroy the cause--You remove the effect."

## GOING EAST

TRAVEL IS GENUINE PLEASURE ON

**Baltimore & Ohio R. R.**

**ROYAL BLUE TRAINS**

—BETWEEN—

**Chicago and New York**

via WASHINGTON, D. C.

Finest and Fastest series of trains in the world. Palatial Coaches, Pullman Buffet Parlor and Drawing Room Cars.

The Finest Dining Car Service in the World.

Is operated by the Baltimore & Ohio Railroad.

**B. M. AUSTIN, General Pass. Agt. - Chicago, Ill.**

## Famous Trains

The Southwest Limited Kansas City to Chicago, The Overland Limited to Chicago via Omaha, The Pioneer Limited St. Paul to Chicago, run via

## Chicago, Milwaukee & St. Paul Railway

Each route offers numerous attractions. The principal thing to insure a quick, comfortable trip east is to see that your tickets read via the Chicago, Milwaukee & St. Paul Railway.

H. S. ROWE,  
General Agent.

134 Third Street, Portland

## ASK THE AGENT FOR TICKETS

VIA



To Spokane, St. Paul, Minneapolis, Duluth, Chicago, St. Louis, and all points east and south.

**OVERLAND TRAINS DAILY**  
**The Flyer and The Fast Mail**

**SPLENDID SERVICE**  
**UP TO DATE EQUIPMENT**  
**COURTEOUS EMPLOYEES**

Daylight trip across the Cascade and Rocky Mountains.

For tickets, rates folders and full information call on or address  
H. DICKSON,  
City Ticket Agent,  
122 Third Street, Portland, Or.  
S. G. YERKES, G. W. P. A.,  
612 First Avenue, Seattle, Wash.

**WE GIVE EXPEDITED SERVICE ON FREIGHT**

**ROUTE YOUR SHIPMENTS VIA GREAT NORTHERN**

Full information from  
WM. HARDER, General Agent,  
Portland, Ore.

### GOING TO THE FAIR.

What to Do if You Desire Practical Information.

If you contemplate visiting the St. Louis Exposition, to secure reliable information as to railroad service, the lowest rates and the best routes. Also as to the local conditions in St. Louis, hotels, etc., etc.

If you will write the undersigned, stating what information you desire the same will be promptly furnished. If we do not have it on hand, will secure it for you if possible, and without any expense to you. Address  
B. H. TRUMBULL,  
Portland, Ore.

**Successful Man Dead.**  
New York, Sept. 24.—Archer Brown, a well known iron merchant, is dead at his home in East Orange, N. J., from heart disease. He began his career as a newspaper reporter in Cincinnati and was an author of considerable note, especially on trade subjects.

## IF YOU'RE SICK

Why don't you try a dose of Hostetter's Stomach Bitters before each meal and at bed-time. You'll be surprised at the amount of good it will do you. It has cured thousands of sickly men and women in the past and won't fail you now. It is unequalled for curing Poor Appetite, Insomnia, Nausea, Female Complaints and Malaria. Try a bottle and test it for yourself. Avoid substitutes.

## HOSTETTER'S STOMACH BITTERS

REPORT OF THE CONDITION OF THE

## Astoria National Bank

At Astoria, in the state of Oregon, at the close of business, September 6, 1904.

### RESOURCES.

Loans and discounts	\$370,658 48
Overdrafts, secured and unsecured	1,387 24
U. S. Bonds to secure circulation	12,500 00
Premiums on U. S. bonds	750 00
Bonds, securities, etc.	38,390 35
Banking house, furniture and fixtures	2,500 00
Other real estate owned	10,330 00
Due from national banks (not reserve agents)	250 22
Due from state banks and bankers	15,061 31
Due from approved reserve agents	128,507 08
Checks and other cash items	2,184 89
Notes of other national banks	160 00
Fractional paper currency, nickels, and cents	827 27
Lafayette Money Reserve in bank, viz:	
Specie	\$58,218 75
Legal tender notes	42 00
Redemption fund with U. S. Treasurer 5 per cent circulation	625 00
<b>Total</b>	<b>\$542,405 59</b>

### LIABILITIES.

Capital stock paid in	\$ 50,000 00
Surplus fund	10,000 00
Undivided profits, less expenses and taxes paid	19,106 15
National bank notes outstanding	9,450 00
Individual deposits subject to check	\$277,496 66
Demand certificates of deposit	71,632 36
Time certificates of deposit	204,720 42
<b>Total</b>	<b>\$642,405 59</b>

State of Oregon, county of Clatsop, ss:

I, J. E. Higgins, Cashier of the above-named bank, do solemnly swear that the above statement is true to the best of my knowledge and belief.

J. E. HIGGINS,  
Cashier.

Subscribed and sworn to before me this 12th day of September, 1904.

GEO. C. FULTON,  
(Seal) Notary Public.

Correct—Attest:

GEO. W. GEORGE,  
WM. H. BARKER,  
A. SCHERNECKAU,  
Directors.

## DEKABER FOR DEATH

Strange End of Two Horsemen Who Expire at Finish of Dekabers Speeding.

BOTH SUDDENLY FELL DEAD

Hardy B. Durham and Gus Hanan Meet Death in Same Manner in Connection With Horse Race.

New York, Sept. 24.—Hardy B. Durham, a well known horse owner and trainer, has dropped dead at Sheepshead Bay race track. He had just stabled his favorite horse Dekaber after watching the animal at work on the track. A strange coincidence was connected with the horseman's sudden ending. Last Saturday at Brighton track Dekaber won a race, beating Ostrich in a close finish. When the latter animal was led back to the stable at Sheepshead, the foreman, Gus Hanan, asked the stable boy if he had won. Learning that the horse upon which he had wagered a large sum had been beaten by Dekaber, Hanan threw up his arms and fell dead.

## A. & C. R. R. TIME CARD.

EFFECTIVE SEPT. 4, 1904.

Leave	PORTLAND	Arrive
8:00 a.m.	Portland Union	11:10 a.m.
7:00 p.m.	depot for Astoria	9:40 p.m.

Leave	ASTORIA	Arrive
7:45 a.m.	for Portland and way points	11:30 a.m.
6:10 p.m.		10:30 p.m.

### SEASIDE DIVISION

Leave	ASTORIA	Arrive
11:35 a.m.	for Seaside Direct	5:20 p.m.

Leave	ASTORIA	Arrive
8:15 a.m.	for Warrenton, Hammond, Ft Stevens, Seaside	10:45 a.m.
5:50 p.m.		7:40 a.m.

Leave	SEASIDE	Arrive
4:30 p.m.	for Astoria Direct	12:30 p.m.

Leave	SEASIDE	Arrive
6:15 a.m.	for Warrenton Ft Stevens, Hammond, Astoria	9:25 a.m.
9:30 a.m.		7:20 p.m.

Additional train leaves Astoria daily at 11:30 a. m. for all points on Ft. Stevens branch, arriving Ft. Stevens 12:30 p. m., returning, leaves Ft. Stevens at 2:00 p. m., arriving Astoria 2:45 p. m.

\* Sunday only.  
All trains make close connections at Goble with all Northern Pacific trains to and from the East and Sound points.

J. C. MAYO,

General Freight and passenger Agent.

## NORTHERN PACIFIC

Time Card of Trains

Leave	PORTLAND	Arrive
7:35 a.m.	Puget Sound Limited	6:45 p.m.

Leave	PORTLAND	Arrive
11:10 a.m.	Kansas City-St. Louis Special	6:45 p.m.
3:30 p.m.	North Coast Limited	7:00 a.m.

Leave	PORTLAND	Arrive
11:45 p.m.	Tacoma and Seattle Night Express	8:05 p.m.

Take Puget Sound Limited or North Coast Limited for Gray's Harbor points. Take Puget Sound Limited for Olympia direct.

Take Puget Sound Limited or Kansas City-St. Louis Special for points on South Bend branch. Double daily train service on Gray's Harbor branch. Four trains daily between Portland, Tacoma and Seattle.

## Portland Business College

PARK AND WASHINGTON STREETS — PORTLAND, OREGON —

Established in 1866. Open all the year. Private or class instruction. Thousands of graduates in positions; opportunities constantly occurring. It pays to attend our school. Catalogue, specimens, etc., free.

A. P. ARMSTRONG, LL.B., PRINCIPAL