

Readers  
Get  
All  
The  
World's  
News  
All  
The  
Time  
In  
The  
Morning  
Astorian

Adver-  
tisers  
Reach  
The  
Purchas-  
ing  
Public  
By  
Using  
The  
Columns  
Of  
The  
Morning  
Astorian



It must be kind of phoney,  
Like an eddyed cone,  
Or a solid mile o' Barnum, if ye like,  
And I jest tell you, by jingo,  
I'm a bopple that I am go  
For a week or so to rubber on the Pike.  
—"A Ballad of the Pike," by Wallace Irwin. Copy-  
righted by Collier's Weekly. Published by permission.

**\$67.50**

**To St. Louis and Return**

June 16, 17, 18; July 1, 2, 3; August 8, 9, 20; September 4,  
6, 7; October 1, 4, 5.  
Return limit, ninety days.

The Rock Island System offers two routes  
to the World's Fair City—via St. Paul,  
Minneapolis, and through Scenic Colorado.  
No change of cars, Ogden to St. Louis and  
St. Paul to St. Louis.

Full information on request.  
Call or write.

A. H. McDONALD, General Ag't,  
140 3rd Street, cor. Alder Street,  
Portland, Ore.



## Steamer "SUE H. ELMORE"

Leaves Astoria Every Wednesday Returning Saturday

The Largest, Staunchest, Steadiest and most Seaworthy vessel  
ever on this route. Best of Table and State Room Accommo-  
dations. Will make round trip every five days between

**ASTORIA  
AND  
TILLAMOOK**

Connecting at Astoria with the Oregon Railway & Navigation  
Co. and Astoria & Columbia River R. R. for Portland, San  
Francisco and all points East. For freight and passenger  
rates apply to

**Samuel Elmore & Co., Gen'l Agts., Astoria, Ore.**

OR TO

A. & C. R. R. Portland, Oregon  
Pacific Navigation Company, Tillamook, Oregon  
O. R. & N. Company, Portland, Oregon

## GOING EAST

TRAVEL IS GENUINE PLEASURE ON

**Baltimore & Ohio R. R.**

**ROYAL BLUE TRAINS**

—BETWEEN—

**Chicago and New York**

VIA WASHINGTON, D. C.

Finest and Fastest series of trains in the world. Palatial Coach  
es, Pullman Buffet Parlor and Drawing Room Cars.

**The Finest Dining Car Service in the World.**

Is operated by the Baltimore & Ohio Railroad.

**B. M. AUSTIN, General Pass. Agt. - Chicago, Ill.**

## Famous Trains

The Southwest Limited Kansas City to  
Chicago, The Overland Limited to Chicago  
via Omaha, The Pioneer Limited St. Paul  
to Chicago, run via

**Chicago, Milwaukee & St. Paul  
Railway**

Each route offers numerous attractions.  
The principal thing to insure a quick,  
comfortable trip east is to see that your  
tickets read via the Chicago, Milwaukee &  
St. Paul Railway.

H. S. ROWE,  
General Agent.

134 Third Street, Portland

## A. & C. R. R. TIME CARD.

EFFECTIVE SEPT. 4, 1904.

Leave	PORTLAND	Arrive
8:00 a.m.	Portland Union	11:30 a.m.
7:00 p.m.	depot for Astoria	9:40 p.m.

Leave	ASTORIA	Arrive
7:45 a.m.	for Portland and	11:30 a.m.
6:10 p.m.	way points	10:30 p.m.

Leave	SEASIDE	Arrive
11:35 a.m.	for Seaside Direct	5:20 p.m.
Leave	ASTORIA	Arrive
7:15 a.m.	for Warrenton, Ft.	10:45 a.m.
5:50 p.m.	Hammond, Ft.	7:40 a.m.
5:50 p.m.	Stevens, Seaside	7:40 a.m.

Leave	SEASIDE	Arrive
4:30 p.m.	for Astoria Direct	12:30 p.m.
Leave	SEASIDE	Arrive
6:15 a.m.	for Warrenton Ft.	9:25 a.m.
9:30 a.m.	Stevens, Ham-	7:20 p.m.
	mond, Astoria	

Additional train leaves Astoria daily  
at 11:30 a. m. for all points on Ft.  
Stevens branch, arriving Ft. Stevens  
12:30 p. m., returning, leaves Ft. Stevens  
at 2:00 p. m., arriving Astoria 2:45  
p. m.

\* Sunday only.  
All trains make close connections at  
Goble with all Northern Pacific  
trains to and from the East and Sound  
points.

J. C. MAYO,  
General Freight and passenger Agent.

ASK THE AGENT FOR  
**TICKETS**



To Spokane, St. Paul, Minneapolis,  
Duluth, Chicago, St. Louis, and all  
points east and south.

**OVERLAND TRAINS DAILY**  
The Flyer and The Fast Mail

**SPLENDID SERVICE**  
UP TO DATE EQUIPMENT  
COURTEOUS EMPLOYEES

Daylight trip across the Cascade and  
Rocky Mountains.

For tickets, rates folders and full in-  
formation call on or address  
H. DICKSON,  
City Ticket Agent.

122 Third Street, Portland, Or.  
S. G. YERKES, G. W. P. A.,  
612 First Avenue, Seattle, Wash.

**WE GIVE EXPEDITED  
SERVICE ON FREIGHT**

**ROUTE YOUR SHIPMENTS  
VIA GREAT NORTHERN**

Full information from  
WM. HARDER, General Agent.  
Portland, Ore.

## A DIRECT LINE

to Chicago and all points east; Louis-  
ville, Memphis, New Orleans, and all  
points south.

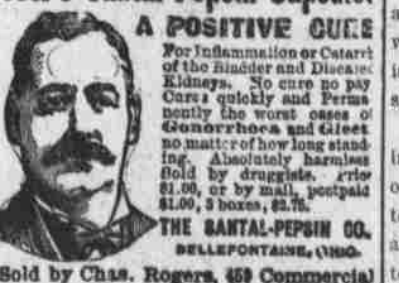
The only direct route to the St.  
Louis world's fair and the East is  
via the O. R. & N. and Union Pacific.  
The following rates apply from As-  
toria:

To St. Louis and return.....	\$67.50
To Chicago and return .....	72.50
To Chicago, returning from St.	
Louis or vice versa .....	70.00
To Chicago, returning via St.	
Louis or vice versa .....	78.50
Returning via California, \$12.50 ad-	
ditional.	

For further particulars, call on or  
address  
G. W. ROBERTS,  
Agent O. R. & N. Co., Astoria.

Always have some definite fact in  
your advertisement. Don't get tired  
of writing copy. People judge your  
store by your advertisements. If you  
haven't anything that will interest peo-  
ple your ads are not likely to bring  
people to your store.

## Scott's Santal-Pepsin Capsules



Sold by Chas. Rogers, 459 Commercial

## A STRANGE COINCIDENCE

**While Kneeling at Grave the Fam-  
ily Monument Fell Upon  
Her.**

**GRAVE DIGGERS ARRESTED**

**Supposed Shaft Was Undermin-  
ed by Men Engaged in  
Digging Graves  
Nearby.**

New York, Sept. 9.—While kneeling  
beside a grave in Washington cem-  
etery at Gravesend, Yetta Blokwitz,  
18 years of age, has been crushed to  
death by the family monument, a heavy  
granite shaft which toppled over. In-  
vestigation led to the belief that the  
foundation of the monument might  
have been undermined by the dig-  
ging of a grave nearby and two of the  
grave diggers were arrested.

**Timber Royalties Increase.**  
Vancouver, B. C., Sept. 9.—The rev-

country.  
A room in and about Tokio can be  
rented for as low as \$1.25 a month,  
but \$1.40 is an average rental. Five  
cents a day is about what this class  
of citizen counts on spending for the  
day's rations, but wages are so in-  
finitesimal that thousands of families  
have difficulty in getting enough to  
eat. An Englishwoman living in Tokio  
tells of an elderly couple of her ac-  
quaintance whose two sons have gone  
to the war. They have no resources;  
all they can earn in a month by mak-  
ing envelopes is about 75 cents. Many  
of the landlords, as an act of patriot-  
ism, reduced soldiers' rents by one-  
half at the beginning of the war, but  
their landlord was not of this type.  
The sufferings of the men at the  
front can be imagined, perhaps, but  
how about the long privations of the  
ones who are left behind—the wives  
and little children, the old grandparents,  
the middle aged couples?  
There is, for instance, one soldier's  
mother, who is employed from 6 a.  
m. to 6 p. m. in making cake boxes.  
Her wages average about \$1 a month.  
One deaf old woman, the mother of a  
soldier, lives in one of the \$1.40 rooms,  
with a niece and her husband and  
child. The aunt is incapable of earn-  
ing, and the niece earns only about 15  
cents a day at her work, while the  
husband, who is a baker, earns only



LLOYD GRISCOM,  
United States Minister to Japan.

enue accruing to the provincial gov-  
ernment from timber royalties, irre-  
spective of timber licenses, during the  
months of July and August, has been  
larger than that of any four months  
in the history of British Columbia, ex-  
ceeding \$100,000. The total revenue  
of the government from this source  
during the whole of last year was only  
\$250,000.

**What Is Life?**  
In the last analysis nobody knows,  
but we do know that it is under strict  
law. Abuse that law even slightly, pain  
results. Irregular living means de-  
rangement of the organs, resulting in  
constipation, headache or liver trouble.  
Dr. King's New Life Pills quickly ad-  
justs this. It's gentle, yet thorough.  
Only 25c at Chas. Rogers' drug store.

## POVERTY IN JAPAN.

**Hardships Endured by Some of the  
Soldiers' Families.**

While poverty in Japan must be a  
thing of hardship and privation, as  
poverty is everywhere, yet the customs  
of the people and the friendliness  
of the climate combine to give it a cer-  
tain grace and beauty which it quite  
lacks in Anglo-Saxon countries. Jap-  
anese life is lived so simply, even in  
families of wealth and social circum-  
stance, that the pinch is not half so  
conspicuous or so ugly as it is in New  
York or London, or Berlin.

The poorest houses in Japan com-  
pare favorably with those in New York,  
so say Europeans who have investi-  
gated, and as even the best families  
own the scantiest of furniture, the ab-  
sence of furnishings in the houses of  
the poor is not noted. The bedding  
may be old and tattered, but it is al-  
ways either hung out to sun or put  
away during the daytime, so that even  
where poverty is the direst the visitor  
is spared the sight of a dilapidated bed-  
stead with a few forlorn rags upon it.

Then, to a foreigner's eyes, every one  
in Japan dresses about alike, and every  
one bathes several times a day, so that  
to be poor looks much less dreadful  
and much less offensive and repellant  
to the fastidious spirit than in this

5 or 10 cents a day. A wife, with one  
eight-year-old child and an infant, has  
been left entirely dependent on her  
father-in-law, whose earnings foot up  
to \$4.50 a month. They have just  
enough to provide food, but nothing  
left over for clothes or to meet their  
monthly rent of 75 cents.

Some of the wives and mothers of  
the soldiers who conquered at Yalu  
are making cigarettes for from half a  
cent to a cent and a half a day!

The average cost of feeding an adult  
Japanese in Tokio is about \$1.50 a  
month.

## DREAD OF HUMANITY

I am compelled by a sense of gratitude  
to tell you the great good your remedy  
has done me in a case of Contagious Blood  
Poison. Among other symptoms I was se-  
verely afflicted with Rheumatism, and got  
almost past going. The disease got a firm  
hold upon my system; my blood was thor-  
oughly poisoned with the virus. I lost in  
weight, was run down, had sore throat,  
eruptions, spots and other evidences  
of the disease. I was truly in a bad shape  
when I began the use of S. S. S., but the  
persistent use of it brought me out of my  
trouble safe and sound, and I have the  
courage to publicly testify to the virtues of  
your great blood remedy, S. S. S., and to  
recommend it to all blood-poison suffer-  
ers, sincerely believing if it is taken ac-  
cording to directions, and given a fair  
trial, it will thoroughly eliminate every  
particle of the virus. JAMES CURRAN,  
Stark Hotel, Greensburg, Pa.

Painful swellings in the groins, red erup-  
tions upon the skin, sores in the mouth  
and loss of hair and eyebrows, are some of  
the symptoms of this vile disease. S. S. S.  
is an antidote for the awful virus that  
attacks and destroys even the bones.  
S. S. S. contains no Mercury, Potash or  
other mineral ingredient. We offer \$1,000  
for proof that it is not absolutely veg-  
etable. Home treat-  
ment book giving  
the symptoms and  
other interesting  
and valuable infor-  
mation about this  
disease, mailed  
free. Our physi-  
cians advise free  
those who write us.

**SSS**  
The Swift Specific Company, Atlanta, Ga.