

Social Realm

The Auxiliary Club meets Monday evening at Mrs. Benton Bowers' home. She will be assisted by Mrs. Tracy. All members are requested to be at the Plaza or library at 7:45. There will be automobiles for everyone.

Embroidery Club.

Mrs. Frank Shinn and Mrs. B. R. Greer were hostesses for the Eastern Star Embroidery Club Tuesday afternoon. Many beautiful Christmas gifts were in evidence and the guests enjoyed light refreshments.

Farewell Frolic.

The farewell frolic of the Methodist church which was to have met at Mrs. Homer Billings' Saturday evening will meet instead at Rev. Douglass' home Saturday evening.

Trinity Episcopal Church.

Vicar, the Rev. P. K. Hammond. Thanksgiving day services at 7:30 and 11 a. m. Sunday services: Holy communion at 7:30 a. m. Sunday school at 9:45. Holy communion and sermon at 11. Evening service at 7:30.

Thimble Party.

Friday afternoon Mrs. John Dill entertained several ladies with a thimble party. The guests were: Mrs. Henry Gilmore, Mrs. R. P. Cornelius, Mrs. Chester Stevenson and little daughter, Mrs. George Eubanks, Mrs. Harvey Ling and Mrs. B. R. Greer.

Shepherd-Gregg.

Kale Shepherd, son of Mr. and Mrs. C. P. Shepherd of this city, and Miss Miriam Gregg, daughter of Dr. and Mrs. G. W. Gregg, were married at 9 o'clock Tuesday evening at the residence of the bride's parents. The immediate families only were present. The house was beautiful with fall flowers and foliage, chrysanthemums predominating. Rev. H. J. Van Fossen performed the ceremony, assisted by Rev. W. J. Douglass. Miss Gregg is a very popular and talented young lady and her readings have enlivened many an evening's entertainment in Ashland. Mr. Shepherd is in the piano and musical instrument supply business with his father here. The couple left on the late train Tuesday bearing the good wishes of a host of friends.

Warner Mercantile Company have all sizes in nails at cut prices.

E. T. Shepherd, piano dealer from Klamath Falls, was in the city Tuesday evening attending the wedding of his brother, L. K. Shepherd.

Dr. J. J. Emmens, oculist and aurist of Medford, will leave about December 1 to spend a month taking post-graduate work in New York city.

C. F. Shepherd and wife have gone to Klamath Falls to eat Thanksgiving turkey with their son Earl and wife.

Why not one of those Universal heaters or ranges at Warner's at less than manufacturer's price?

Mrs. M. D. Way and her sister, Miss H. P. Dayton, have rented their house on Almond street and will spend the winter at Long Beach, Cal.

Greenie Hodges of Granite, Texas, writes to the Tidings inquiring of the whereabouts of her brother, Everett O. Hodges, whom she last heard from when he was at Kulo, Wash., and who she understood had gone to southern Oregon. Anyone knowing of his whereabouts would confer a lasting favor upon her by writing.

Big shipment of enamels on sale Friday morning at Warner's. The prices will astonish you.

Card of Thanks.

We wish to express our sincere thanks to our many friends for their kindness and sympathy during our recent sorrow.

MR. AND MRS. ELMO NEIL.

For Mayor.

Having been urged for some time by many friends, who would not take no for an answer, I have decided to make the race for mayor of Ashland, and hereby announce myself as a candidate, subject to the will of the people at the city election to be held December 19. C. B. LAMKIN.

Notice.

Hillah Temple, A. A. O. N. M. S., will hold annual meeting Friday evening, December 1, at 8 o'clock. Annual election of officers and two representatives to the Imperial Council. Chris will provide refreshments.

C. W. N'EMS, Ill. Potentate.
W. H. McNAIR, Recorder.

The Portland jitney ordinance requiring franchise, bond and schedule has been upheld by the courts.

Electrolytic Method Cleaning Silverware

(From Department of Agriculture Bulletin.)

An easy and effective method of cleaning tarnished silverware by boiling in a soda and salt solution in contact with a clean piece of aluminum or zinc is recommended to housewives by the department as a result of studies made by its specialists in home economics. The necessary procedure is so simple that it may be followed successfully in practically any home.

The cleaning system known as the electrolytic method has been well recognized for several years.

What the Electrolytic Method Is.

The tarnish which occurs on silver is not due to oxidation, but is dependent entirely upon the action of sulphur. In most cases the source of the sulphur causing tarnish is rubber, wool, foods like eggs, and the sulphur in the air due to burning illuminating gas and coal. The electrolytic cleaning method depends on the facts that this tarnish of silver sulphid is slightly soluble in the hot solution employed, and that it is broken down chemically and its silver content redeposited on the ware when the proper electrical conditions prevail. The presence of both the silver and the aluminum or zinc in the hot solution provides the necessary electrical conditions. Under this method, therefore, practically all the silver in the tarnish is returned to the object being cleaned. When silver polishers are used, on the other hand, all the silver in combination in the tarnish is removed.

Methods Recommended.

In the cleaning method recommended by the department the necessary materials are a granite cooking utensil deep enough to allow the silverware to be covered by the solution; a clean piece of aluminum or zinc, preferably the former, and baking or washing soda. The solution, consisting of a teaspoonful of baking or washing soda and a like amount of table salt to each quart of water, is brought to a boil in a granite or enameled utensil. A sheet of aluminum or clean zinc is dropped in. The tarnished silverware is then immersed in the solution so that it is in contact with the sheet of aluminum or zinc. The tarnish should disappear in a few seconds. The silver object should then be removed from the solution, rinsed, and dried with a soft cloth.

Aluminum is much more satisfactory than zinc for use in this cleaning process, since it does not become coated with a layer of carbonates which would interfere with the chemical reaction. Zinc does form carbonates and, if used, must be cleaned frequently in dilute hydrochloric acid. A small sheet of aluminum may be purchased, especially for silver cleaning purposes, or a piece of an old aluminum utensil well cleaned may be used. Utensils which would later be used in cooking operations should never be employed in cleaning silverware by the electrolytic method. If very large pieces of silver are to be cleaned and a container is required larger than can be placed conveniently on the stove, the hot solution may be poured into such a vessel and the silver object then immersed. The method is most effective, however, when the solution boils during the cleaning process, and efficiency is rapidly lowered as the temperature of the solution falls below the boiling point.

Special Considerations.

The electrolytic method gives the cleaned silver a satiny finish after several cleanings. If a burnished surface is desired, the silver must from time to time be polished lightly with some abrasive polishing material such as powdered whiting. The study made by the department specialists included a comparison of the amount of silver lost when the whole tarnish was removed by polishing and when the electrolytic method was used. It was found that when whiting paste was used as an abrasive, spoons lost nearly 0.01 of a gram of silver each, approximately twenty-five times as much as when the "home-made" electrolytic method was employed.

Minstrels At Vining Theatre

The Nashville Students, minstrels and jubilee singers with their justly famous Tango band are at the Vining Theatre Wednesday and Thursday of this week with a snappy minstrel program. The regular feature pictures are run as well and a complete change of program each night.

Fresh fish by the carload is being shipped from the Umpqua river by way of the Willamette-Pacific and Eugene to New York.

Public Invited to Memorial Services

Mrs. E. B. Hanley of Medford will deliver the memorial address and Mrs. Henry Terry Elmore of Ashland will sing at the annual memorial services of the Ashland lodge of Elks at their temple hall next Sunday afternoon at 2:30 o'clock. Other numbers will be given by Loveland's orchestra; Sumner Parker, violinist; E. L. Rasor, vocalist. Mrs. A. L. Strickland is the accompanist.

The lodge wishes it understood that the services are public and that the citizens of Ashland and vicinity are not only welcome, but cordially invited to be present. Following an opening number by the orchestra, there will be brief ritualistic exercises by the officers, invocation by Rev. P. K. Hammond, eulogy of departed brothers by A. L. Strickland.

The memorial address is of patriotic character and the reputation recently gained by Mrs. Hanley as a public speaker is a guarantee that it will be well worth listening to. Mrs. Elmore of Ashland has no peer as a singer, in this region, and those who have not had the pleasure of hearing her should grasp this opportunity. The ability of Sumner Parker as a violinist and the splendid baritone of Mr. Rasor are also inducements to attend. In short, the lodge has never before had so many good numbers on a program of the kind.

The committee in charge is composed of J. K. Choate, Howard Barrett and Wilfred Carr. Neat souvenir programs will be handed out at the door by the ushers, Messrs. Carl Murphy, Roy Chambers, Ben Bowers, Ray Murphy and Frank Dougherty. The officers who will participate in the ritualistic services are George Owen, exalted ruler; George Watson, leading knight; Charles Hast, loyal knight; Cassius Miller, lecturing knight; J. E. Thornton, secretary; Pierre Provost, treasurer; Cliff Jenkins, esquire; Gus Hedburg, inner guard; T. T. Provost, tiler; Rev. P. K. Hammond, chaplain.

Local Boy Leads In Stock Judging

Oregon Agricultural College, Corvallis, Ore., Nov. 29.—(Special to the Tidings.)—Mr. Edwin Dunn of Ashland is a member of the stock-judging team which is now representing the college at the Pacific Northwest Livestock Show at Lewiston, Idaho. The team won second place at the Cascade International Livestock Show held at North Yakima last week and will compete at the Pacific International at Portland next week. This is the best trained and equipped stock-judging team which has ever represented the college. The members were chosen by means of competitive work which has been in progress since the beginning of the school year. Last year's work was also taken into consideration. Mr. Dunn is high man with a margin of 5 per cent. The other members of the team are: D. D. Green of Hood River, Ore.; J. H. Edwards of Monroe, Ore.; Maurice Jernsted of Carlton, Ore.; F. G. Southerland of Box Bluff, Hawaii, and, as alternate, W. V. Clarke of Laytonville, Cal.

Colossal Ford Parade Feature

A colossal Ford entry, designed as a float 14 by 26 feet, was a sensational feature of the industrial parade which was one of the incidents of the Indiana State Centennial recently celebrated for two weeks at Indianapolis.

The Ford entry, designed to illustrate the Ford as the car of the typical American family, created a great deal of interest because it was difficult to determine how the huge float moved in the parade. As a matter of fact the car was carried on a platform supported on four Ford chassis, each with a driver. As draperies concealed these four supports the motive power could not be seen.

Specially designed Ford floats were also big features of the educational and health parades. In all the events of the two weeks' program the Ford was conspicuous and shared honors with President Wilson, who came from Washington to make an address on good roads.

Vote Down Special Tax for Roads

Taxpayers of the Bellevue road district met at the Bellevue school last Saturday to vote on a proposition for assessing a special tax of \$3,000 for road building purposes. The proposition was defeated by a substantial majority.

Puritan Purity in Groceries



PURE groceries in this store mean groceries that are right. Just plain, old time standards of value and quality go here—and nothing else.

Just remember this when you are planning Thanksgiving Dinner for those you love, and whose well being is in your care.

We Have Just the Right Things

for Thanksgiving that will give to your meal the zest and completeness you desire, and make it the success your efforts deserve.

The season's best—at their best—and prices the lowest

Plaza Grocery

C. E. SAMS, Prop.
Phone 78

Pay Now or Next Year Is Question

Whether to pay delinquent sums this coming year or the next year was the question which gave rise to the most argument at the city tax budget meeting held Monday evening. The street department borrowed \$1,800 last year and the electric light department has \$5,057.30 coming from this general fund for street lights for last year. The proposition revolved around whether the taxpayers would be better able to meet this obligation next year or now. Six per cent interest is paid on them. A straw vote was taken of the taxpayers present, nine voting in favor of carrying the debts over and four in favor of including a levy to pay them this year. The council finally decided to carry them over. Councilman Root argued actively against carrying them over, stating that the people at a recent special election had emphatically turned down a

saved 1 per cent interest, and that this amounted to the same thing and he did not believe in going against the will of the people. The main reason for the delinquencies is the fact that in past years an insufficient tax has been levied, thus causing a deficit which is cast onto the present and future councils. Mr. Gillette explained that the reason the street lighting had not been paid for was because the general fund was cut down \$2,200 below what was needed to run the city last year, and a cut in valuation last year had lost the general fund about the same amount additionally. The electric light department had money in its funds to actually run it and naturally enough it had to bear the burden. The money to make up these deficiencies is borrowed from the water sinking fund, which has about \$10,000 on hand which is drawing but 2 per cent.

The arguments led into a discussion of electric light matters which made a good many things plan to citizens who had misconceptions of

electric light matters but which were too involved to be discussed here. Mr. Lamb stated that the electric committee was preparing a statement of the electric situation which would be done before long. Mr. Strickland invited the public generally to call at his office and look over his books, and stated that he would be glad to explain anything which was not understood.

Someone asked why street lighting cost \$6,000 a year, and Mr. Strickland showed that by taking into consideration the interest on the street lighting system which belonged to the light department and is worth \$20,000, the depreciation, which is figured at 3 per cent, the breakage of bulbs and shades, cost of current, extension of the system, etc., the profit last year was something like \$12.

Mr. Carnahan stated that he had in his own home and church concrete instances of saving made by installing meters and asked why more meters were not installed. Mr. Strickland stated that the demand for meters was great and that he was putting them in as fast as money became available for their purchase. Stolen current was discussed, Mr. Carnahan putting the man who stole current in the same class with the man who stole money.

The Northwest Steel Company at Portland contemplates adding a \$1,000,000 rolling mill to its plant. Several hundred additional men would be employed.

Klamath Falls has voted \$300,000 bonds to aid the California, Oregon & Eastern railroad.

Lakeview has voted \$20,000 bonds to buy railroad right-of-way.

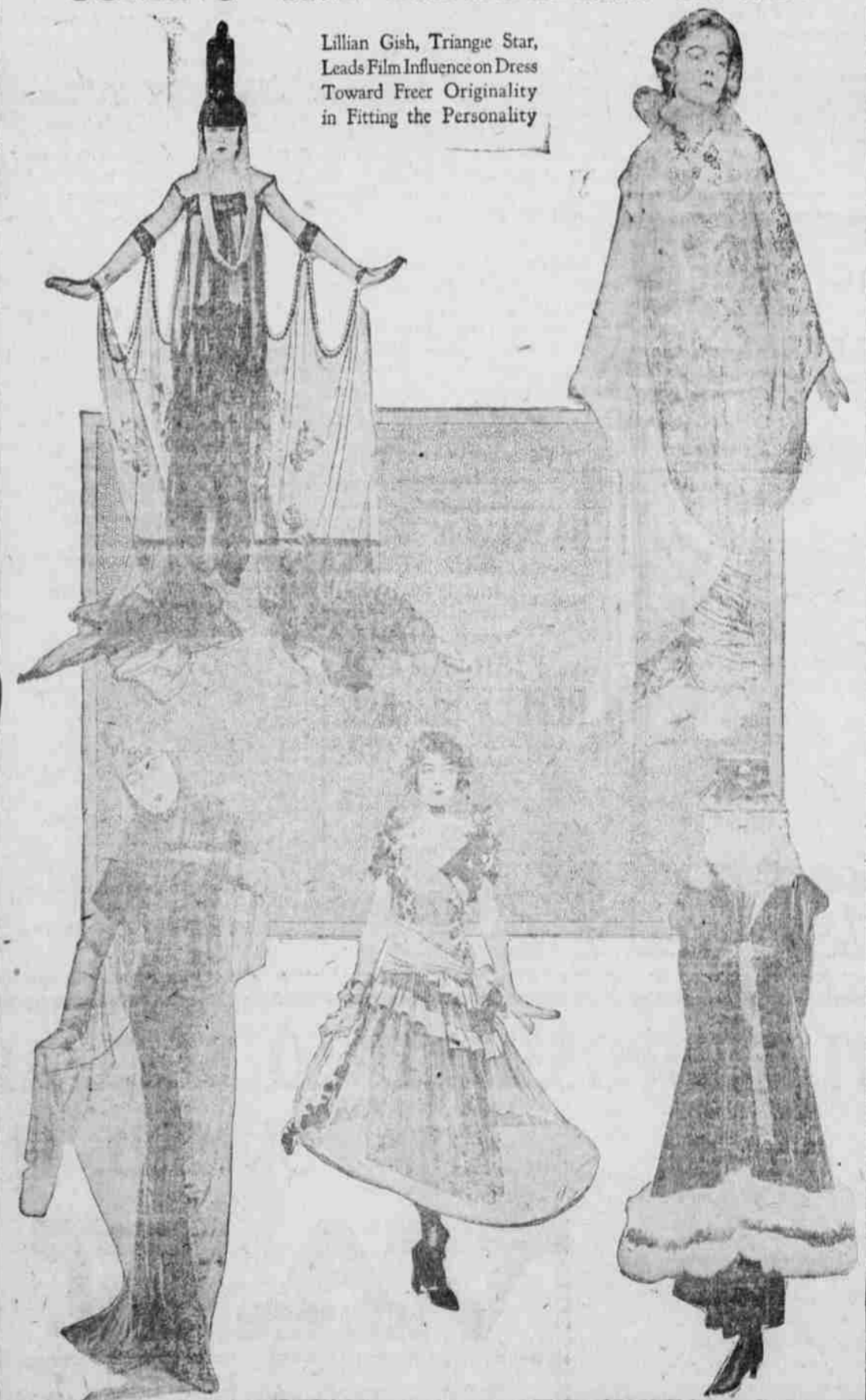
Classified Advertisements

TOO LATE TO CLASSIFY.

FOR SALE—One team of ponies, harness and light wagon. Inquire of D. Twidwell, Talent. 55-2t
FOR SALE—Pulleys and a few household goods. 242 Granite street. 1t

COMING—THE CHARACTER GOWN

Lillian Gish, Triange Star, Leads Film Influence on Dress Toward Freer Originality in Fitting the Personality



These unusual gowns, worn by Lillian Gish in her latest play, "Diane of the Folies," illustrate how the fashions of the film are always in advance of the mode. It will not do for the picture star to be up to the minute in dress—she must be ahead of it, for the day has come when the screen very largely sets the fashion. Women go to the pictures not only to see what the styles are,

but what they are going to be—and the pictures must tell them. Two of the creations shown here—the two at the left—are essentially of the stage, but the negligee, the dancing frock and the fur-trimmed suit are for milady of the audience, and each one tells her of a mode that is on its way from the inner sanctums of fashion.