

"ANURIC!"
THE NEWEST
DISCOVERY IN CHEMISTRY

This is a recent discovery of Doctor Pierce, who is head of the Invalids' Hotel and Surgical Institute at Buffalo, N. Y. Experiments at Doctor Pierce's Hospital for several years proved that there is no other eliminator of uric acid that can be compared to it. For those easily recognized symptoms of inflammation—as backache, scalding urine and frequent urination, as well as sediment in the urine, or if uric acid in the blood has caused rheumatism, it is simply wonderful how surely "Anuric" acts. The best of results are always obtained in cases of acute rheumatism in the joints, in gravel and gout, and invariably the pains and stiffness which so frequently and persistently accompany the disease rapidly disappear.

Go to your nearest drug store and simply ask for a 50-cent package of "Anuric," manufactured by Dr. Pierce, or send 10 cents to Dr. Pierce for a large trial package. If you suspect kidney or bladder trouble, send him a sample of your water and describe symptoms. Doctor Pierce's chemist will examine it, then Dr. Pierce will report to you, without fee or charge.

Note:—French scientists affirm that "Anuric" is thirty-seven times more active than lithia in eliminating uric acid, and is a harmless but reliable chemical compound that may be safely given to children, but should be used only by grown-ups who actually wish to restore their kidneys to perfect health, by conscientiously using one box—or more in extreme cases—as "Anuric" (thanks to Doctor Pierce's achievement) is by far the most perfect kidney and bladder corrector obtainable.

Dr. Pierce's Pellets are the original Little Liver Pills. One Little Pellet for a laxative—three for a cathartic.

AT THE CHURCHES

First Church of Christ, Scientist.
Pioneer avenue south. Sunday service at 11 o'clock. Subject of lesson sermon, "Everlasting Punishment." Sunday school at 10 o'clock. Wednesday evening meeting at 8 o'clock. Reading room open from 2 to 4 daily except Sundays.

Baptist Church.
Rev. H. John Vine will speak at

DEO FOR CATARRH and HAY FEVER
Dennis Eucalyptus Ointment
AT ALL DRUG STORES
TUBES 25c JARS 50c

33 years have taught the producers of Golden West coffee something about the selecting, blending and roasting of coffee. That's why—

Golden West Coffee is "Just Right"

both the morning and evening services next Sunday. Regular prayer meeting at 7:30 Thursday evening. Sunday school at 9:45. Preaching service at 11. B. Y. P. U. at 6:30. Evening service at 7:30.

Free Methodist Church, Corner Seventh and Main.

Sunday school at 9:45 a. m. Preaching service at 11 a. m. and 7:30 p. m. Class meeting at 12 m. Young people's and children's meeting at 6:30 p. m. Prayer meeting Thursday at 7:30 p. m. Our quarterly meeting will be October 27-29. Rev. D. D. Dode, district elder, from Grants Pass, will speak each evening, also Sunday morning at 11. All are invited to these services.—Rhoda Burnett, pastor.

Farewell Service.

Rev. R. W. Farquhar of the Congregational church will close his pastorate on the coming Sabbath, preaching morning and evening. Friends of the church and the pastor are most cordially invited to attend. The regular services will be held. Sunday school at 9:45. Morning worship at 11; theme, "The Type of Intensity." Evening service at 7:30. Farewell words.

It has been arranged that Superintendent A. J. Sullens of Portland will supply the pulpit on the first

Sunday of November, morning and evening. Rev. Sullens is home missionary superintendent of the Congregational churches in Oregon and southern Idaho.

Presbyterian Church.

Sunday school at 9:45. Preaching services at 11 and 7:30. Christian Endeavor at 6:30. Prayer service Wednesday at 7:30. Choir rehearsal Thursday at 7:30. The Ladies' Missionary Society will have charge of the evening service next Sunday. Mrs. G. S. Davis of Salem,

Ore., field worker for the Home Board, will be the speaker of the evening and will conduct a workers' conference in the afternoon.

Church of Christ

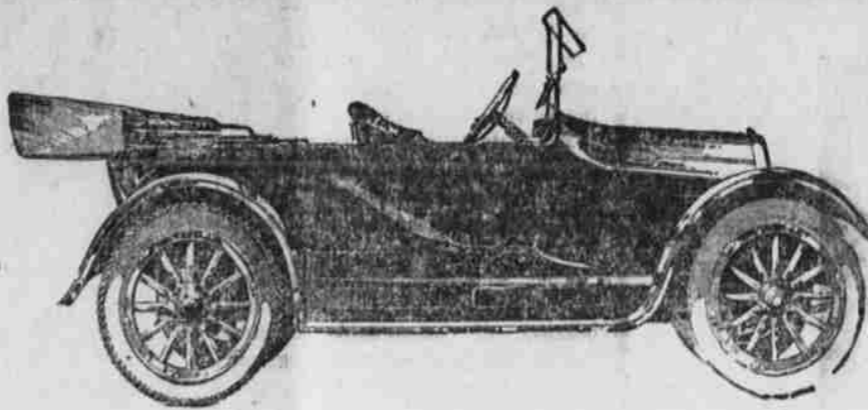
Second and B streets, W. L. Melinger, pastor. Bible school at 10 a. m. morning worship and Communion at 11 a. m. Christian Endeavor at 6:30 p. m. Evening preaching service at 7:30. Mrs. Clara G. Esson, state Bible school superintendent, will speak in the morning. Mrs. Esson was formerly an associate pas-

tor of the Ashland church, and all her friends will be glad to greet her again.

Trinity Episcopal Church

Vicar the Rev. P. K. Hammond. Holy Communion at 7:30 a. m.; Sunday school at 9:45; morning prayer and sermon at 11. Evening prayer and sermon at 7:30. Strangers and visitors cordially welcomed.

The Star Lumber Company of St. Paul is to build a mill at Reedsport, Ore.



31½
Horsepower
New Series
Overland
Model 75 B
\$635
Roadster 5620
L. A. Toledo

Thousands Behind

Three to fifty per hour on high—that's the speed report we get from owners all over the country.

And 20 to 25 miles per gallon of gas is the economy report.

A corking good car—

A price that makes it the greatest value on the face of the earth—

That combination has kept the factory thousands of cars behind sales for weeks and weeks.

But we're getting them in right along.

Better see us about yours today.

G. E. MILLNER, Dealer, 374 E. Main, Phone 116

The Willys-Overland Company, Toledo, Ohio

"Made in U. S. A."

Ashby-Lexicon ARROW COLLARS
15 cts. each, 6 for 90 cts.
CLUETT, PEABODY & CO. INC. MANF.

Ashland's Greatest Sensation!!
THE END Warner Mercantile Company **QUIT BUSINESS**

WHY this Quit Business Sale is of greater importance than ever before—Coming as it does right at the approach of winter when many people are thinking of buying new stoves and ranges, many a home needing an extra supply of household necessities and cooking utensils; and at a time farmers can use all kinds of hardware, tools, etc. So think what this sale means to you! It is an opportunity that may never come again and one that you can not afford to miss. This is no fake or hurrah sale or a sale to raise money. It is a genuine, bona-fide sale to quit business for good and there will be no let-up to the cutting and slashing of prices until our purpose has been accomplished and this stock is sold out completely. So come to this store and sale expecting the greatest bargains ever offered and you will not be disappointed.

STORE CLOSED THURSDAY--FRIDAY TO ARRANGE STOCK

Sale Opens Saturday at 9:00 a. m.

- 500-piece assortment of Graniteware, values to 20c, closing out prices, your choice **7c**
- One lot Genuine Sterling Aluminum Ware, values to \$1.50, to be closed out at..... **95c**
- Regular \$1 10-quart two-coat heavy Enamel Water Pails, to be closed out at... **69c**
- Regular 50c White Metal Table Spoons, set of six to go on sale at..... **24c**
- Regular \$7.50 value, No. 20, Wood Heater, to be closed out at **5.45**
- Regular \$10.50 Universal, No. 22, heavy Wood Heater, goes on sale at..... **7.45**

- One lot 30 Lanterns, regular \$1.00 values, (have been used a short time but good as new) closing out at **35c**
- Regular full-sized Hatchets to be closed out at **10c**
- Regular \$16 Hot Blast Coal Heater to go on sale at **11.45**
- Regular \$32.50 18-inch oven Universal Range to go on sale at..... **24.35**
- Regular \$65 Sharples Tubular No. 3 Separator to be closed out at..... **48.00**
- Regular 90c Blue & White Enamel Coffee Pots, 3-qt., to be closed out at..... **49c**

FREE

HOUSE BROOMS TO THE FIRST 100 CUSTOMERS MAKING A \$2.00 PURCHASE ON OPENING DAY WE WILL GIVE A GOOD HOUSE BROOM

Absolutely Free

- One lot Granite Ware, values to 40c, Preserving Kettles, Saucepans, Baking pans, 3 and 4 quart sizes, to go on sale at **27c**
- Large assortment heavy 2-coat Blue and White Granite Padding Pans, Pie Plates, Dairy Pans, etc, 1 and 2 quart sizes, to be closed out at **9c**

- Regular 35c Stew Pans, Dippers and Wash Basins, 3 and 4 quart sizes, to be closed out at **19c**
- Regular \$1.00 sets of six Auger Bits sizes 1-4 to 5-8 in., to be closed out at.... **69c**
- Reg. 25c large size Screw-drivers, to be sold at this sale for **14c**
- Set of six Teaspoons, made of good White Metal to be sold at **12c**
- Entire stock of Nails to be closed out at, per pound **5c**
- Regular 25c Stovepipe to go on sale, per joint **16c**

- Genuine Keen Kutter Junior and Enders Safety Razors, including a half dozen blades, to go on sale at..... **83c**
- Regular \$24 Queen In cubator, 165-egg size, to be closed out at **17.45**
- Regular \$1.50 8-quart Shamrock Enamel Coffee Pots, closing out at..... **95c**
- Universal Flash, No. 18, regular \$14.50 wood heater, special closing price... **9.96**
- Regular 15c Guernsey Ware Bowls, to close out at **5c**
- ble Disc Records go on sale Regular 75c Columbia Dou- at **49c**