

COUNTY COURT PROCEEDINGS.

The following is a schedule of expenditures of Jackson county, Oregon together with a list of claimants and articles or services for which the claim is made, and which were passed upon by the County Court for Jackson county during the month of April, 1916:

Table listing county court proceedings with names and amounts, including H. B. Taylor, stenographer, E. W. Wilson, deputy sheriff's salary, Clerk's Office, Treasurer's Office, School Superintendent's Office, Sheriff's Office, etc.

Table listing county court proceedings with names and amounts, including I. R. Kilne, deputy inspector's compensation, E. R. Oatman, deputy inspector's compensation, Assessor's Office, Collector of Taxes, Jail, Recorder's Office, Circuit Court, etc.

Table listing county court proceedings with names and amounts, including Medford Printing Co., supplies, Ulrich Bros., drayage on supplies, Western Union Tel. Co., telegrams, Medford Book Store, supplies, Treasurer's Office, Coroner's Office, etc.

J. P. DODGE & SONS Undertakers State Licensed Embalmer Lady Assistant Deputy County Coroner

Table listing county court proceedings with names and amounts, including A. S. Ames, freight on supplies, L. B. Brown, supplies, Henry Deuer, nursing, Thos. T. Merriman, blacksmithing, Monarch Seed & Feed Co., supplies, Medford Harness Co., supplies, Medford Furniture & Hdw. Co., supplies, A. Penwell, supplies, Talent Merc. Co., supplies, Medford Pharmacy, supplies, Ulrich & Ryan, supplies, etc.

RAILROAD WAGES

Shall they be determined by Industrial Warfare or Federal Inquiry?

To the American Public:

Do you believe in arbitration or industrial warfare?

The train employes on all the railroads are voting whether they will give their leaders authority to tie up the commerce of the country to enforce their demands for a 100 million dollar wage increase.

The railroads are in the public service—your service. This army of employes is in the public service—your service.

You pay for rail transportation 3 billion dollars a year, and 44 cents out of every dollar from you goes to the employes.

On all the Western railroads in 1915, seventy-five per cent of the train employes earned these wages (lowest, highest and average of all) as shown by the pay rolls—

Table showing average yearly wage payments to all Western train employes (including those who worked only part of the year) as shown by the 1915 payrolls. Columns for Passenger, Freight, and Yard, with sub-columns for Range and Average.

The average yearly wage payments to all Western train employes (including those who worked only part of the year) as shown by the 1915 payrolls were—

Table showing average yearly wage payments to all Western train employes (including those who worked only part of the year) as shown by the 1915 payrolls. Columns for Passenger, Freight, and Yard.

A 100 million dollar wage increase for men in freight and yard service (less than one-fifth of all employes) is equal to a 5 per cent advance in all freight rates.

The managers of the railroads, as trustees for the public, have no right to place this burden on the cost of transportation to you without a clear mandate from a public tribunal speaking for you.

The railroads have proposed the settlement of this controversy either under the existing national arbitration law, or by reference to the Interstate Commerce Commission. This offer has been refused by the employes' representatives.

Shall a nation-wide strike or an investigation under the Government determine this issue?

National Conference Committee of the Railways

- ELISHA LEE, Chairman. F. R. ALBRIGHT, Gen'l Manager, Atlantic Coast Line Railroad. L. W. BALDWIN, Gen'l Manager, Central of Georgia Railway. C. L. BARDO, Gen'l Manager, New York, New Haven & Hartford Railroad. E. B. COLEMAN, Vice-President, Southern Railway. B. E. COTTER, Gen'l Manager, Washoe Railway. F. E. CROWLEY, Asst. Vice-President, New York Central Railroad. G. B. EMERSON, Gen'l Manager, Great Northern Railway. C. H. EWING, Gen'l Manager, Philadelphia & Reading Railway. E. W. GRICE, Asst. to President, Chesapeake & Ohio Railway. A. S. GREIG, Asst. to Receiver, St. Louis & San Francisco Railroad. C. W. KOUNS, Gen'l Manager, Alhambra, Topeka & Santa Fe Railway. E. W. McMASTERS, Gen'l Manager, Wheeling and Lake Erie Railway. N. D. MAHER, Vice-President, Norfolk and Western Railway. JAMES RUSSELL, Gen'l Manager, Denver & Rio Grande Railroad. A. M. SCHROYER, Resident Vice-Prm, Pennsylvania Lines West. W. L. SELDON, Vice-President, Seaboard Air Line Railway. A. J. SEONE, Vice-President, Erie Railroad. G. S. WAID, Vice-Prm. & Gen'l Manager, Sunset Central Lines. (Paid Advertisements.)

RAILROAD WAGES

Shall they be determined by Industrial Warfare or Federal Inquiry?

To the American Public:

Do you believe in arbitration or industrial warfare?

The train employes on all the railroads are voting whether they will give their leaders authority to tie up the commerce of the country to enforce their demands for a 100 million dollar wage increase.

The railroads are in the public service—your service. This army of employes is in the public service—your service.

You pay for rail transportation 3 billion dollars a year, and 44 cents out of every dollar from you goes to the employes.

On all the Western railroads in 1915, seventy-five per cent of the train employes earned these wages (lowest, highest and average of all) as shown by the pay rolls—

Table showing average yearly wage payments to all Western train employes (including those who worked only part of the year) as shown by the 1915 payrolls. Columns for Passenger, Freight, and Yard, with sub-columns for Range and Average.

The average yearly wage payments to all Western train employes (including those who worked only part of the year) as shown by the 1915 payrolls were—

Table showing average yearly wage payments to all Western train employes (including those who worked only part of the year) as shown by the 1915 payrolls. Columns for Passenger, Freight, and Yard.

A 100 million dollar wage increase for men in freight and yard service (less than one-fifth of all employes) is equal to a 5 per cent advance in all freight rates.

The managers of the railroads, as trustees for the public, have no right to place this burden on the cost of transportation to you without a clear mandate from a public tribunal speaking for you.

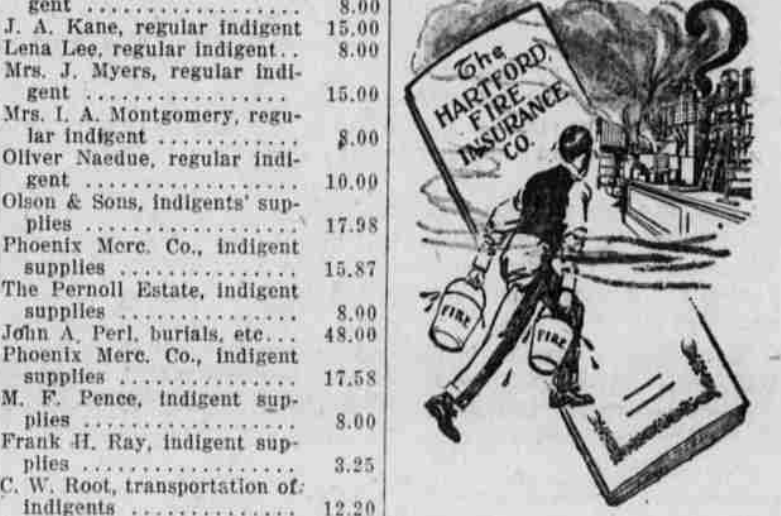
The railroads have proposed the settlement of this controversy either under the existing national arbitration law, or by reference to the Interstate Commerce Commission. This offer has been refused by the employes' representatives.

Shall a nation-wide strike or an investigation under the Government determine this issue?

National Conference Committee of the Railways

- ELISHA LEE, Chairman. F. R. ALBRIGHT, Gen'l Manager, Atlantic Coast Line Railroad. L. W. BALDWIN, Gen'l Manager, Central of Georgia Railway. C. L. BARDO, Gen'l Manager, New York, New Haven & Hartford Railroad. E. B. COLEMAN, Vice-President, Southern Railway. B. E. COTTER, Gen'l Manager, Washoe Railway. F. E. CROWLEY, Asst. Vice-President, New York Central Railroad. G. B. EMERSON, Gen'l Manager, Great Northern Railway. C. H. EWING, Gen'l Manager, Philadelphia & Reading Railway. E. W. GRICE, Asst. to President, Chesapeake & Ohio Railway. A. S. GREIG, Asst. to Receiver, St. Louis & San Francisco Railroad. C. W. KOUNS, Gen'l Manager, Alhambra, Topeka & Santa Fe Railway. E. W. McMASTERS, Gen'l Manager, Wheeling and Lake Erie Railway. N. D. MAHER, Vice-President, Norfolk and Western Railway. JAMES RUSSELL, Gen'l Manager, Denver & Rio Grande Railroad. A. M. SCHROYER, Resident Vice-Prm, Pennsylvania Lines West. W. L. SELDON, Vice-President, Seaboard Air Line Railway. A. J. SEONE, Vice-President, Erie Railroad. G. S. WAID, Vice-Prm. & Gen'l Manager, Sunset Central Lines. (Paid Advertisements.)

ARE YOU INSURED



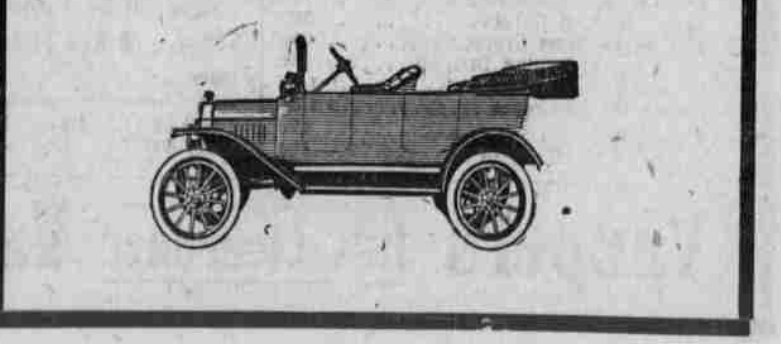
Yes, that is a very burning question sometimes! If you are not fully protected by insurance against fire, NOW is the time to attend to it. Don't put off until tomorrow what can be done today. How about that home, merchandise, automobile, etc.?

Billings Agency Real Estate and Real Insurance 41 East Main Phone 211



The after-cost is the real-cost of a motor car. Because Ford cars are carefully made of the best materials obtainable Ford after-cost is low. And in the matter of service, Ford leads. 8,800 service stations in this country, where you get quick, courteous service at a fair economical price. Runabout \$390; Touring Car \$440; Coupelet \$590; Town Car \$640; Sedan \$740. All prices f. o. b. Detroit. On display and sale at

F. L. Camps' Garage



DRAYTON ARROW COLLAR THIN, LIGHT YET STARCHED AND SLIGHTLY 15c each 6 for 90c CLUETT, PEARSON & CO., INC., MAKERS