



**Blue Serge Suits Are Like Men**

—they all look pretty much alike AT A DISTANCE. Study them closely and you soon recognize great differences.

At its best, the blue serge is the smartest, dressiest and at the same time most useful garment a man can own. It's always in place—goes well with any necktie or hat and is distinctly the sign of the well-dressed man.

But the blue serge must be above reproach. All-wool fabrics, unimpeachable style, staunch, reliable tailoring—these are the attributes of the thoroughbred. These you find in every Michael-Stern blue serge suit.

For every type and build of man we've a blue serge waiting. Prices to suit you.

**H. G. Enders & Son**  
"WHERE YOU DO BETTER"

**Classified Advertisements**

(Continued from Page Three.)

**TOO LATE TO CLASSIFY.**

FOR SALE—Fresh milch cow. Call H. V. Mitchell, phone 409-J. 49-1mo\*

FOR CITY CARRIAGE AND GARDEN PLOWING see E. N. Smith, 124 Morton St. Phone 464-J. 2ft

WANTED—Experienced grocery clerk wants position in Ashland. Best of references. H. Ewer, 110 North Main. 49-2t\*

WANTED—Party with suitable range to take Swiss milch goats on shares. J. B. Gibbs, 464 Mountain Ave., Ashland, Ore. 49-4t\*

FOR SALE AT A SACRIFICE—Work horse, 1,200 lbs.; work mule, 1,300 lbs.; two sets double work harness, back harness, single harness, cowboy saddle (best make), Hercules stump puller (nothing better made), 2 1/2 farm wagon, 30-30 rifle, double barreled shotgun, log chains, cross-cut saws. Inquire 115 Granite St.

**ASHLAND'S ICE PLANT A BIG ONE**

(Continued from Page One.)

whiteness in ice is the air which the water contains. This is why there is always more or less white ice on top of that formed in a lake or river. After the river first freezes there is still considerable air in the water, and if there are not air holes it rises and forms in the ice as it freezes, which with the snow on the top makes the white ice. In the local ice plant the white ice and the clear ice are both made from water from the city mains, and both settled in the same tank, being drawn out of it through the same pipe. Then why the difference? Simply in the method of manufacture. The white ice, or can ice as it is termed at the factory, is made simply by filling deep galvanized iron cans with water and freezing them by placing them in an immense vat where each can is surrounded with coils carrying ammonia.

There is no provision for removing the air and the ice freezes white like it will in a tumbler of water. Did you ever stop to think that you never saw any clear ice in the water pitcher or pail when it froze in the night back east? It was the aeration in the streams that made the clear ice, not the purity of the water. In order to get the clear ice there has to be some artificial method of removing the air from the water. Paradoxical as it seems, this is done by pumping air into the water. Clear ice is manufactured in huge vats which have a perforated pipe running along the bottom through which air is continually pumped. This air, coming up through the water, continually brings with it the air confined in the water. As the cold is applied only to the sides of the tank the ice forms slowly on the side, just as it does on the side of a pail or tumbler, and is perfectly clear. It takes nine days to produce a tank of clear ice in this way, and as it is necessary to pump air through it steadily, it will be seen that the cost is heavy.

The writer has heard it stated that it costs more to put up ice from rivers and lakes than to manufacture it. That is all nonsense, as anyone will see who stops to think. The Ashland plant has a maximum capacity of 17 tons daily. It employs six men the year around, besides the manager, and eight to ten in the summer. Throughout the middle west, and in fact on Lake Tahoe, Cal., ice is put in houses alongside the lake or river, or in cars, for 50 cents per ton. The cost of power alone for manufacturing ice in Ashland is over \$1 per ton. And this, remember, does not include upkeep of machinery, labor or any other expense. Simply what the juice costs them to run their electric motors.

Were it not for the icing of cars and the cold storage business the plant would bankrupt in a week. As a matter of fact, the Tidings representative was shown the book in which was carried the account of the local sales for the last year, and in but three months only did it equal the wages of the men who delivered it, to say nothing of the expense of team and wagon. With ten customers on Main street between the Billings place and the normal, it will be seen that the local trade does little toward supporting the plant. Just two customers, or rather three, maintain the plant. The largest is the Pacific Fruit Express; the subsidiary company which, while really the Southern Pacific, is separate and handles the fruit refrigerator cars. The icing of cars is the principal revenue of the ice company. This business has been steadily growing. In 1910, the first year Mr. Root was in charge, 2,018 cars were iced. In 1911 there were 2,306 iced, 2,656 in 1912, and in nine months of 1913, 2,090 were iced. The furnishing ice for use of passenger cars for the Southern Pacific railway is no small item. In 1912 a little over 1,000 tons of clear ice, or nearly three tons per day, was furnished at the depot for that purpose. The Wells-Fargo Express Company is another good customer, having used 622 1/2 tons in 1912 for icing fish and reicing cars.

These are the principal items of revenue in an ice and storage business, though there is considerable revenue from the cold storage. The local plant has various rooms, one for eggs, one for apples, and others for other fruits, vegetables, etc. The plant distributes about \$1,000 per month in the city in the way of wages, charges for water and power, and other expenses, a very large per cent of which remains here. Next time you think your ice bill is high just stop to think what it means to make ice artificially and be thankful that we are lucky to have such a plant in the city.

**GIVES THE SECRET OF LONGEVITY**

(Continued from Page One.)

**Thousand-Year Resurrection.**  
We are not to suppose that all will be resurrected at once. The Resurrection Day shown in the Scriptures is a thousand-year day. The resurrection from the grave will be a gradual process according to the Apostle Paul. "The dead in Christ shall rise first, then we which are alive and remain," etc. "All shall be made alive, but every man in his own order." We see that there will be order in the resurrection. "Many that are first shall be last, and the last shall be first."  
"Blessed and holy is he that hath part in the first resurrection; on such the second death hath no power (they will be made death-proof), but they shall be priests of God and of Christ, and shall reign with Him a thousand years."—Rev. 20:6. This is easily seen to refer to the Church, elsewhere called "the Church of the first-born, whose names are written in heaven." The Church will be highly exalted and will sit with Christ in His throne to assist in judging the world, and even the angels.

Then will come the second resurrection, including first a great company of good Christian people called in the Bible "the great multitude." These were not so faithful to the Master as were the members of the Little Flock. These will not sit in Christ's throne, but will be permitted to "serve day and night" before the throne. They will not wear crowns of glory, but will be permitted to carry palms of victory.

The second resurrection pictured in the Scriptures applies also to the world of mankind. Theirs will not be to a heavenly glory as in the case of the Church, but to an earthly glory. St. Paul calls attention to this terrestrial glory in 1 Cor. 15:40: "The glory of the celestial is one, and the glory of the terrestrial is another."

Chief among those in Paradise, or earth restored to perfection as it was in the Garden of Eden, will be those who were faithful to God before the Gospel Age. These ancient worthies will assist in raising the rest of the

world up to perfection. Death will gradually vanish. "Christ shall reign till He hath put all enemies under His feet. The last enemy that shall be destroyed is Death." All the wicked will finally be destroyed, and the universe will thus be purified. This is victory indeed, this is climacteric, this is glorious!

"Lives again our glorious King; Where, O Death, is now thy sting? Once He died our souls to save, Where's thy victory, boasting Grave?"  
(Paid Adv.)

**Card of Thanks.**

Mr. Eli N. Peters, Mrs. Florence Studebaker and Mrs. C. A. Hockett wish to express their thanks to the neighbors and friends for their many kindnesses to them during their bereavement, and to all who showed their sympathy in floral offerings, or who assisted in the funeral services for their loved one.

ELI N. PETERS,  
MRS. C. A. HOCKETT,  
MRS. FLORENCE STUDEBAKER,

**A Good Bargain.**

A bargain in a house, completely furnished, on a corner lot 60 by about 140; a carpenter shop and full set of carpenter's tools, also three-horse gas engine, a sawing table, with saw, buzz planer, sander, grindstones, stove, etc. All for \$1,050. If you are looking for a good corner and not far out at a real snap, see me at once. W. D. Hodgson, phone 31. 48-2t

**Mine Strikers Confess Crime.**  
Denver, Colo., Nov. 13.—Seven coal mine strikers confessed at La Veta Tuesday to having ambushed and killed three mine guards and an automobile driver near there.

The Tidings is for sale at W. M. Poley's Drug Store, 17 East Main St.

**SKATING**  
—AT—  
**Natatorium!**

Tuesday evening, 7:30..... 25c  
Thursday evening, for beginners 25c  
Saturday afternoon, children... 15c  
Saturday evening, special music 25c

For private skating and basket ball parties apply to A. L. Lamb, 343 Mountain Avenue, Ashland.

**For Sale Or Exchange**

One of the best business blocks in Ashland for sale. Might consider some trade. Good income.

The best business in city today for sale. Would take as part payment 10 acres of good land anywhere near a good town. Sickness cause for selling.

\$800 will buy the best small business in city. A fine income.

A large house and lot suitable for a boarding house. Might take a small property in part payment. Too large for small family, reason for selling.

Have Ashland property to trade for coast property, near Gold Beach if possible.

For further particulars see me at 63 North Main street.

**MRS. S. L. ALLEN**  
Res. Phone 289-J. Office Phone 16

**On Friday, Nov. 14**

20% off on every piece of Enamelware in the House. 2,000 Grafanola votes with each purchase.

**On Saturday, Nov. 15**

10% off on every Universal Heating Stove. 25,000 votes on Grafanola.

**On Monday, Nov. 17**

15 per cent off on every Tool in the house. 3,000 Grafanola votes with each tool.

**On Tuesday, Nov 18**

10 per cent reduction on every Range sold. 100,000 votes with the purchase.

**Wednesday, Nov. 19**

10 per cent off on every O' Cedar, Wizard or Brown Daisy Dustless Mop or Furniture Brush. 25,000 votes with each purchase.

**Thursday, Nov. 20**

10 per cent off on every Dollar or over, of any goods in the house. 10,000 votes on Grafanola with each purchase of \$1.00 or over.

Prices hold good on the Day named and for cash only. All goods charged will be at marked prices.

**Splendid Opportunity to do Your Christmas Buying**  
**WARNER, LOW PRICED HARDWARE MAN**  
PHONE 146 375 EAST MAIN STREET

**J. P. DODGE & SONS**  
**House Furnishers**  
AND  
**Undertakers**  
Deputy County Coroner Lady Assistant

**Something New Every Day**

The Plaza Grocery prides itself upon the fact that it keeps fresh, up-to-date goods. It is a common thing to hear our customers say, "We like to trade here because your goods are so fresh and clean." Right buying makes quick selling, that's why.

**PLAZA GROCERY**  
PHONE 78

**New York Giants**

—VS.—

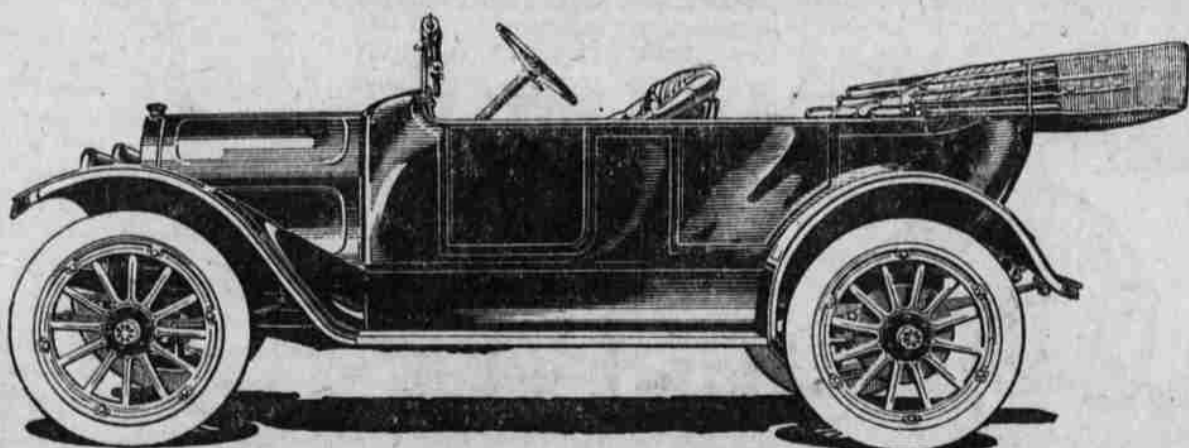
**Chicago White Sox**

**MEDFORD**

**Nov. 17--2.30 P. M.**

**TICKETS \$2.00**

**On Sale at Butler's**



**The 1914 Reo \$1,330 F. O. B. ASHLAND**

The best car you can buy for the money. Fully equipped. Electric starter and lights.

TELEPHONE 492-**ASHLAND GARAGE** 53 SECOND ST.