



Biliousness

WHEN you have a bilious attack your liver fails to perform its functions. You become constipated. The food you eat ferments in your stomach instead of digesting. This inflames the stomach and causes nausea, vomiting and a terrible headache. Take Chamberlain's Tablets. They will tone up your liver, clean out your stomach and you will soon be as well as ever. There is nothing better.

Chamberlain's Tablets

Toledo Meat Co.

DEALERS IN LIVESTOCK
DRESSED AND CURED MEATS
WHOLESALE AND RETAIL
Highest Price Paid for Hides

Brown & Oldenburg, Props.

ONE WAY--

TO CUT DOWN YOUR GROCERY BILLS CALL AT—
"GILDERSLEEVE'S GROCERY"
LOOK OVER OUR STOCK—GET OUR PRICES—

GIVE US A TRIAL
AND WE WILL BOTH BE PLEASED—

A. M. GILDERSLEEVE

The White Corner Store

We have a fine line of Groceries, Flour and Feed
And Your Dollar has a greater purchasing power at this
Big Store—item for item—
Our Special Sales every Saturday-Monday—are cash savers

R. S. VAN CLEVE
PHONE 9005 TOLEDO, OREGON

Toledo Drug Co.

Beginning May 1st
Open 8 A.M. to 7 P.M.
Sundays 4:30 to 5:30

GET YOUR
Cigars, Tobaccos,
Pipes & Smokers'
Articles at
AL'S SMOKEHOUSE



Here are authentic figures from the Ford factory at Detroit. They show you just how many Ford cars and trucks have been built each month since January 1, 1921 and how many have been sold to retail customers, in the United States.

	Produced	Delivered	Total Customers
JANUARY	29,883	57,208	57,208
FEBRUARY	35,305	63,903	63,903
MARCH	61,886	87,221	87,221
Total Production	127,074	Total Sales	208,032

showing that actual sales for the first three months of 1921 exceeded production by 80,958 Ford cars and trucks! April regulations already specify 107,719 additional cars and trucks and the estimated April output of the factory and assembly plants combined calls for only 90,000! These facts clearly show that the demand for Ford products is growing much faster than manufacturing facilities to produce and were it not for the dealers' limited stocks, which are now being rapidly depleted, many more customers would have been compelled to wait for their cars. It will be only a matter of weeks, therefore, until a big surplus of orders will prevent anything like prompt deliveries.

If you would be sure of having your Ford car or truck when you want it, you should place your order now. Don't delay. Phone us or drop us a card.

A. T. PETERSON, Local Agent

**LINCOLN COUNTY LEADER
OFFICIAL COUNTY PAPER
F. N. HAYDEN, Publisher**

Entered at Toledo, Oregon postoffice, as second-class matter, under the Act of March 3rd, 1879.

SUBSCRIPTION PRICES
One year, in advance, \$2.00
Six Months, in advance, \$1.00

Established Twenty-Eight Years Ago.

ADVERTISING RATES
Display advertising 20 cents inch.
Composition 5 cents inch.
Locals 5 cents line.

NO SPACE FOR KNOCKERS

During the past two weeks we have received a deluge of letters, for publication, from persons residing in different parts of the county, criticizing the County Court for what it has or has not done in its road building program. The columns of the Leader are open to those who have constructive criticisms to offer, whether they favor or oppose the building of more roads. However we have no space or time for those who would vent their personal spleen thru our columns.

Some of the articles are signed and some are not. We can respect the man who has the courage and convictions to sign his article, even if he is quoting something that he claims Sam Jones told Bill Smith and that Bill Smith told him, but we have no use for the man who sends in an unsigned article.

If you have something to expose, put it down in black and white, don't try to make out that you know a lot about something and then wind up by saying nothing. Cite actual instances, quote figures that you can back up.

REPORT OF CONDITION
Of the First National Bank of Toledo at Toledo, in the State of Oregon, at the close of business on April 28, 1921.

Reserve District No. 12 Charter No. 11937	
Resources	
Loans and discounts, including rediscounts	\$5,921.44
U. S. Govt. securities owned	100.00
Other bonds, stocks, securities, etc.	164.70
Furniture and fixtures	7,689.51
Cash in vault	4,341.84
Lawful reserve with Federal Reserve Bank	1,000.00
Net amounts due from national banks	8,002.27
Checks on banks located outside of city or town of reporting bank and other cash items	961.90
Other assets, if any	348.02
TOTAL	\$29,029.68

Liabilities	
Capital Stock paid in	\$17,100.00
Surplus fund	1,720.00
Individual deposits subject to check	8,134.06
Certificates of deposit due in less than 30 days	170.00
Certificates of deposit	1,905.62
TOTAL	\$29,029.68

STATE OF OREGON,)
) ss.
County of Lincoln,)

I, W. Beck, Cashier of the above named bank, do solemnly swear that the above statement is true to the best of my knowledge and belief.

W. Beck, Cashier.
Subscribed and sworn to before me this 6th day of May, 1921.

G. B. McCluskey,
Notary Public.
My commission expires, Sept. 2, 1923.

Correct—Attest:
A. T. Peterson, Guy Roberts,
Peter Frederick, Directors.

TYPEWRITERS

CORONA, the portable typewriter, \$20.00, including handsomely. Other makes for sale or rent at lowest prices.

W. B. Hartley Co.
Newport, Oregon

Lucky Tiger

The Hair's Hair and Scalp Remedy!

Positively eradicates dandruff—corrects scaly, matous scalp—stops falling hair—promotes luxuriant growth—adds lustre, beauty, health—action immediate and certain. Money-Back Guarantee.

At drugists and barbers, or send 25c for generous sample.

LUCKY TIGER CO., Kansas City, Mo.

ADVANTAGES OF A BANK ACCOUNT

However small it may be, if you settle your transactions with checks, the cancelled checks are returned to you and can be produced as receipts. Checking accounts are therefore more than a convenience—they are an insurance against overpayment. Every one should pay bills and accounts with checks.

Your checking account will be welcomed at this bank, where you are assured of absolute security and the most courteous service.

First National Bank of Toledo

We are a member of the FEDERAL RESERVE BANK

**R. D. BURGESS
PHYSICIAN AND SURGEON**
Toledo, Oregon

Office in Andrews Building. Office hours 10 to 12 a. m.; 2 to 4 and 7 to 9 p. m. Emergency calls at any time

**Develop Your Home State
by
Patronizing Your Railroads**

The development of Oregon and its Railroad Transportation service is a matter of importance to you. A vital factor in the development of Western Oregon is the Southern Pacific Company

Did You Know

Southern Pacific payrolls in Oregon for 1920 amounted to \$11,083,754.93
Southern Pacific purchases in Oregon for 1920 amounted to 4,519,888.00
Southern Pacific taxes paid in Oregon for 1920 amounted to 1,110,038.86
Southern Pacific total distribution in Oregon for 1920 amounted to . . . \$16,713,681.79

Southern Pacific is the largest payer of taxes in Western and Southern Oregon. Southern Pacific taxes average 7% of all taxes paid in every county through which it operates

To continue these payrolls, purchases, taxes, and provide better facilities and convenient, safe, rapid and frequent service is the aim of that Company. Why not travel on Southern Pacific trains and do your part to enable that Company to keep pace with the further development of Oregon

Reduced Fare Tickets

for
SUMMER VACATIONISTS AND TOURISTS
Week-end and Season
Summer Vacation Tickets
to
Seashore and Mountain Resorts
will be on sale
May 28th to September 30th
Week-end tickets are limited to Monday following sale date. Season tickets permit stop-overs and return limits vary with closing date of resorts

Back East
Summer Tourist Tickets
to
Eastern Cities
will be on sale
June 1st to August 15th
through
CALIFORNIA
in one direction
Final limit three months from sale date, not to exceed October 31st. Liberal stop-overs and your choice of routes

"OREGON OUTDOORS"

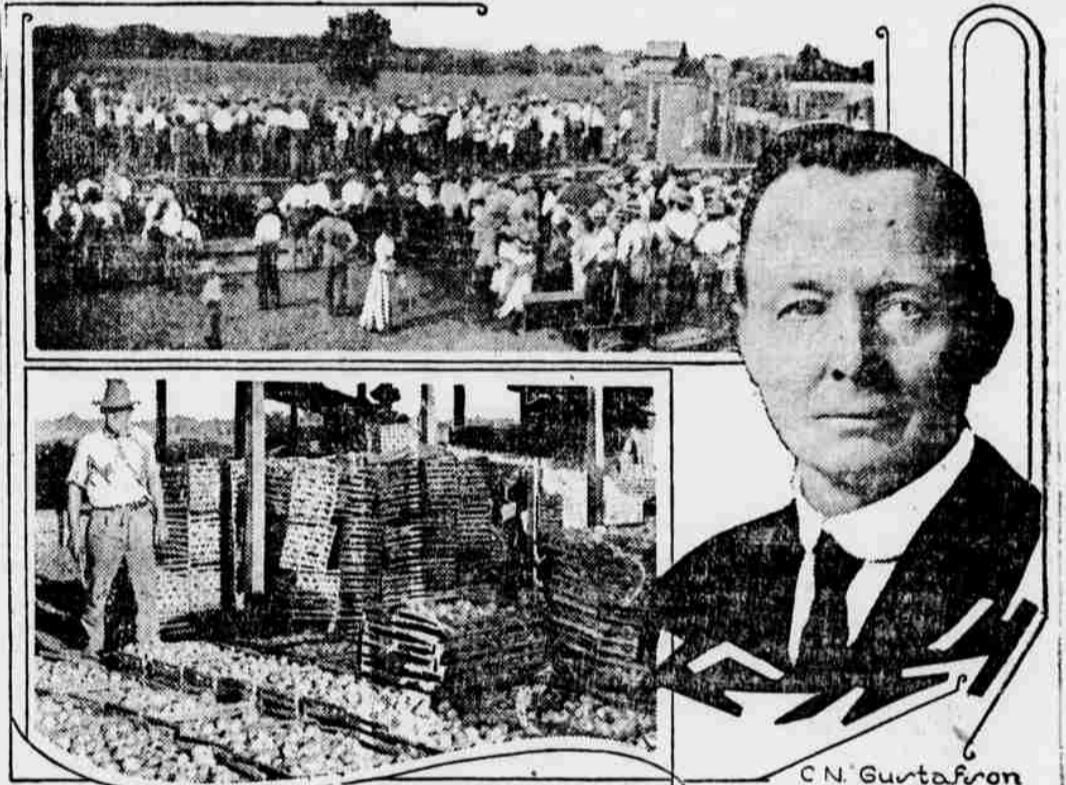
A new illustrated booklet graphically describing the different resorts, and including hotel and camp information. Copy FREE on request.

For particulars as to passenger fares, routes, train schedules or sleeping car accommodations inquire of any Ticket Agent of

SOUTHERN PACIFIC LINES

JOHN M. SCOTT
General Passenger Agent

California Plan of Marketing Appeals to Farmers



Commodity marketing as successfully launched in California, bids fair to spread into national practice, as shown by recent action of the American Farm Bureau Federation. The plan can and does apply to all farm commodities. It is a state or national pooling of all products to be sold by expert marketing men appointed by the farmers themselves.

wool growers, cotton growers, livestock men, farm produce men, etc., are to be so organized, under the Farm Bureau present plans, furnishing the assurance of the highest possible market to all of its members, no matter what their crop may be. Photos show—upper left: Crowds in western Kansas at mass meeting on commodity organization during one of the recent Farm Bureau drives; right, C. H. Gustafson, chairman of the grain marketing committee of the Farm Bureau Federation, who reports Feb. 14 at a Kansas City meeting on the "California plan" to his grain growers. Lower left: Activities in the southwest, where the winter onion growers are already highly organized and are getting highest price for their bermuda and pearl onions.

