

# Some Late Views and News Photos of The Panama-Pacific Exposition

SAN FRANCISCO, June 4.—The first impression of the big Exposition is the grandeur and glory of it all. It is a revelation in the beauty of its architecture and the magnificence of its vistas and its views. You should receive your first view of this wonder city, they call it the Jewel City, from the tower of jewels, its most conspicuous feature, from the main entrance. If you glimpse it on a sunny morning with the fountains playing and the myriad of jewels on the tower sparkling and shimmering in the sun you catch your breath for the very beauty of it all. The forms are those of semi-tropical Hispano-Moorish architecture but the coloring is most wonderful. Even one who is color blind finds and feels a splendid glow in the glory of it and the satisfying effect upon both mind and senses of a studied harmony of key and tone. Here, for the first time in American history, is a temporary, but ample city, that substitutes for the bit and miss color of our cities and streets a harmonious union of tints and shades fitting to one another and to the natural colors of the environing earth, plant and tree growth, sea and sky. The influence of this beauty in color design is certain to be far reaching and to serve as a strong impetus to the art of color in city building.

A general view of the Exposition, a stroll through its courts and avenues, a glimpse of the fine arts building across the lagoon is alone worth a trip across a continent to see. Even if one can spend but a few days at the Exposition it should not be missed for the present generation will never look upon its like again.

## Detail of the Court of the Universe



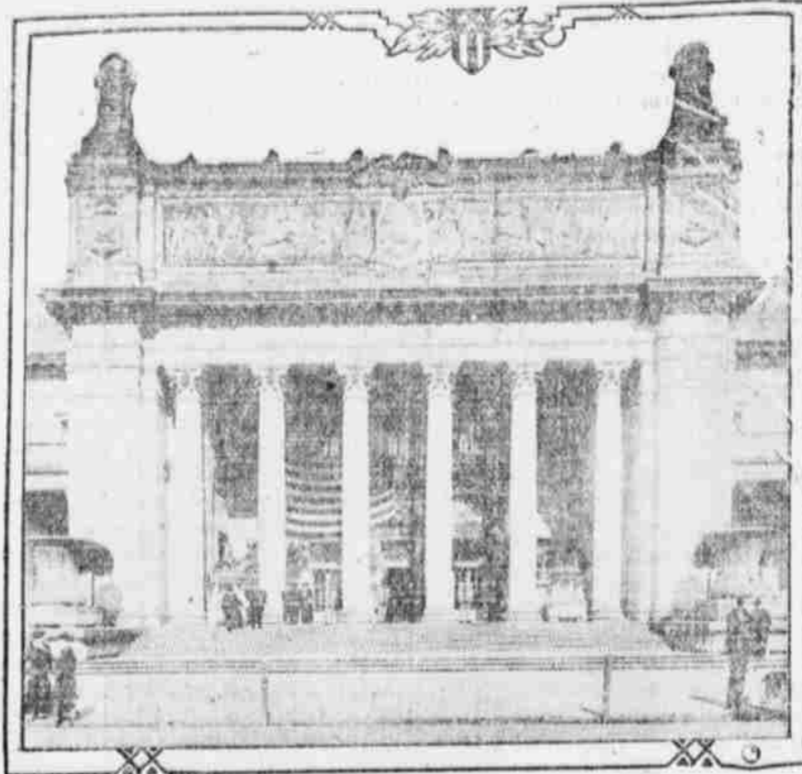
ILLUSTRATION shows a fountain scene in the Court of the Universe at the Panama-Pacific International Exposition, San Francisco. The succession of star crowned figures surmounting the top of the circular colonnade is most effective, especially at night when under illumination. Be sure to see the great Exposition.

## Novel Manufacturing Exhibit at Marvelous Exposition



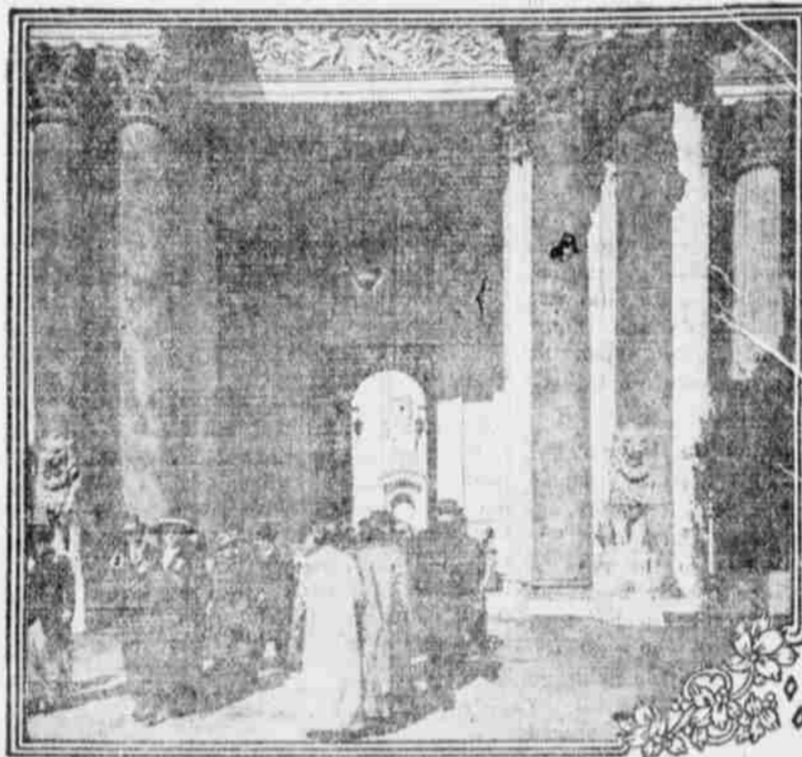
ILLUSTRATION shows one of the interesting exhibits in the Palace of Manufactures at the Panama-Pacific International Exposition, San Francisco. This typifies the realism that dominates the whole exhibitive tone of the great Exposition. The harvester and model horses are complete in every detail. Be sure to visit San Francisco this summer.

## One of the State Buildings at the Great Exposition



THIS picture shows the entrance to the New York State building at the Panama-Pacific International Exposition, San Francisco. This is a wonderfully handsome structure of Greco-Roman design and is finished in travertine to match the color scheme of the exhibit palaces. New York city also has an individual pavilion at the Exposition. The building and furnishings cost \$1,000,000.

## Seeing the Sights at the World's Greatest Exposition



THE entrances to the exhibit palaces and other great buildings of the Panama-Pacific International Exposition, San Francisco, are constant in their receiving and outpouring of amazed visitors. The illustration suggests the magnificence and grandeur that are typical of the architecture of the wonderful Exposition. Visit the great Exposition.

## Night at the Panama-Pacific Exposition

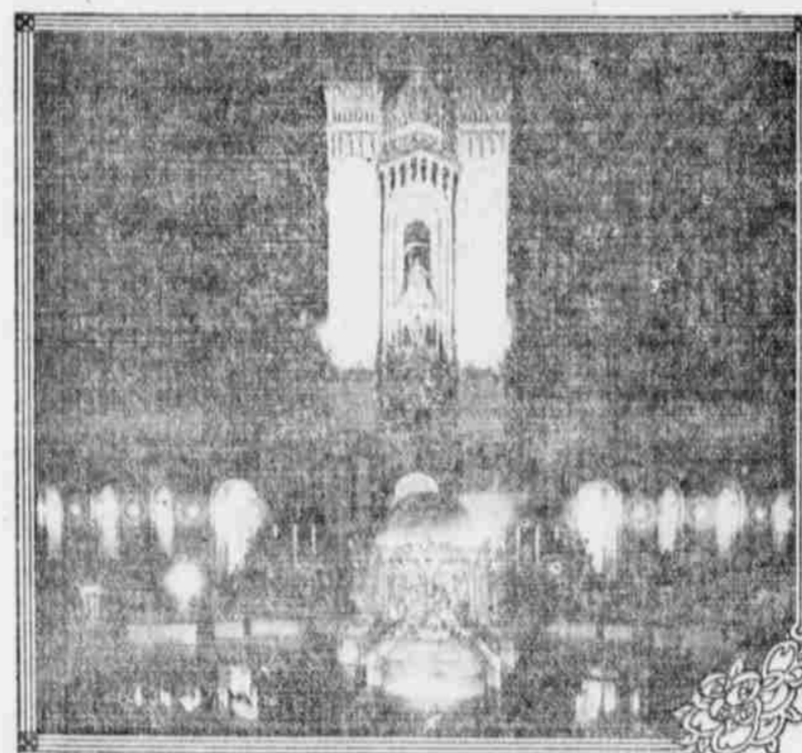


ILLUSTRATION scene in the Court of Abundance at the Panama-Pacific International Exposition at San Francisco. An infinite wealth of richly carved detail marks the architecture of this beautiful court. The Fountain of Earth, which is the sculptured attraction in the center of the court, is most beautiful. Now is the time to visit the great Exposition at San Francisco.

## 1915 MIDSUMMER RACE MEET AT MYRTLE POINT

Official Program  
FRIDAY, JULY 2ND, 1915

No. 1—Trot or pace, one-half mile, two heats, each heat a race, 2:35 class, purse...\$100  
No. 2—Running, one half mile, purse...\$80.00  
No. 3—Trot or pace, one-half mile, best two in three heats, free for all, purse...\$125  
No. 4—Novelty race, one mile, \$30 for first to quarter post, \$40 for first to half-mile post, \$55 for first to three-quarter post, \$75 for first to mile stake...\$200  
No. 5—Motor Cycle, 5 miles, \$25 to 1st, \$15 to 2nd...\$40  
SATURDAY, JULY 3, 1915

No. 6—Trot or pace, one-half mile, two heats, each heat a race, 2:35 class, purse...\$100  
No. 7—Running, five-eighths mile, purse...\$100  
No. 8—Trot or pace, one mile, three heats, every heat a race, purse...\$150  
No. 9—Running, one and one-eighth miles, for Coos and Curry County horses only, purse...\$200  
No. 10—Consolation race, for all horses not finishing as good as second, purse...\$75  
No. 11—Motorcycle race, \$25 to 1st, \$15 to 2nd, purse...\$40

SENSATIONAL SALE OF PAINT & WALL PAPER NOW ON THE ART DECORATING COMPANY  
256 Market Avenue Marshfield  
Estimates furnished Phone 193-J

CAR FOR HIRE Oliver Kephart Phone 310

DRY WOOD at CAMPBELL'S WOODYARD North Front Street Phone 270

PROFESSIONAL DIRECTORY  
H. H. Harper HOUSE BUILDER General Repairing and Cabinet Making. Phone 349-J.

J. M. Wright Phone 188-R BUILDING CONTRACTOR Estimates furnished on request

Dr. H. M. Shaw Eye, Ear, Nose and Throat. GLASSES FITTED. DR. MATTIE B. SHAW. Diseases of Women and Children Office Phone 339-J, Rooms 200, 201, 202, Irving Block

Benjamin Ostlund CONSULTING ENGINEER AND ARCHITECT Offices, 206 Irving Block. Phone 103-L or 267-J. Marshfield, Oregon.

H. G. Butler CIVIL ENGINEER Room 304 Coke Bldg. Phone 145-J. Residence Phone 128-L.

W. G. Chandler ARCHITECT Rooms 301 and 302, Coke Building, Marshfield, Oregon.

Wm. S. Turpen ARCHITECT Marshfield, Oregon.

Perl Riley Ballinger PIANIST AND TEACHER Residence Studio, 217 No. Third St. Phone 368-L.

Pictures & Framing Walker Studio

THE REAL QUESTION The question is not, will men honor you for your work? But does your work honor you? Your concern is not only to create profit for yourself, but to make that which will profit many besides yourself. COOS BAY STEAM LAUNDRY Phone 57-J.

## Dozens of Savings Accounts Have Been Opened Here This Year

Not all large accounts—but the smaller depositor knows he is just as welcome here. For months we have been urging the opening of a savings account here—because we want to encourage thrift and industry.

We pay interest on savings accounts. You may open an account at any time in any amount.

FIRST NATIONAL BANK OF COOS BAY  
Safety Deposit Boxes For Rent.

FLANAGAN & BENNETT BANK  
OLDEST BANK IN COOS COUNTY Established 1889.  
Capital, Surplus and Undivided Profits \$118,000  
Interest paid on TIME AND SAVINGS DEPOSITS  
Officers  
J. W. Bennett, President.  
J. H. Flanagan, Vice-President.  
R. E. Williams, Cashier.  
Geo. F. Winchester, Asst. Cashier.

Scandinavian-American Bank  
"WHERE SAVINGS ARE SAFE"  
OUR "HOME SAVINGS BANK" FOR YOUR CHILDREN  
\$1 Opens an Account  
Our neat "Home Bank" free for your use.  
HOURS 9 TO 3 SATURDAY EVE 7 TO 9

F.A. KILBURN Steamers SANTA CLARA  
San Francisco-Eureka-Coos Bay-Portland  
North Bound  
FROM SAN FRANCISCO 10:00 a. m., June 5, 10, 15, 20, 25, and 30.  
FROM COOS BAY FOR ASTORIA AND PORTLAND. P. M. Tide, June 1, 7, 12, 17, 22, 27, July 1.  
South Bound  
FROM PORTLAND 6 P. M. June 4, 9, 14, 19, 24, 29, July 4.  
FROM COOS BAY FOR EUREKA AND SAN FRANCISCO. P. M. Tide, June 6, 11, 16, 21, 26 and 31.  
NORTH PACIFIC STEAMSHIP CO.  
Smith Terminal Dock, Phone 136. W. E. STUHR, Agent.

INTER-OCEAN TRANSPORTATION CO.  
Weekly Service Coos Bay and San Francisco.  
STEAMSHIP NANN SMITH  
Freight and Passenger Service  
SAILS FROM MARSHFIELD FOR SAN FRANCISCO SATURDAY JUNE 5TH AT 4 P. M.  
San Francisco Office, 600 Fife Building, and Pier Number 23  
Coos Bay Agent, C. F. McGEORGE, Phone 44.

EQUIPPED WITH WIRELESS  
Steamship Breakwater  
ALWAYS ON TIME.  
SAILS FROM MARSHFIELD EVERY SUNDAY DURING JUNE AT 9 A.M., AND FROM PORTLAND EVERY THURSDAY AT 8 A.M.  
Tickets on sale at Portland City Ticket Office, 6th and Oak Streets. Phone 35-J. C. B. LANDERS, Agent.

Puget Sound Bridge & Dredging Co.  
Dams, Bridges, Buildings. General Construction  
COMPLETE PLANTS FOR HARBOR WORK  
Our Coos Bay office has available for Oregon Coast work the  
Dredge "Seattle"  
the most powerful, best equipped and most thoroughly modern twenty-inch hydraulic dredge in Pacific waters  
Coos Bay office, Marshfield, Oregon. Main office, Seattle, Washington.

WOOD! Kindling wood, per load \$1.75 to \$2 Alder wood, 16 to 24 inches...\$2 to \$2.50 Free Delivery W. H. LINGO Phone 227-J. North First St.

YOU AUTO CALL FOR FOOTE'S AUTOS Phone 260-L. Night and Day. Right Cafe. GOOD CARS. CAREFUL DRIVERS. D. L. FOOTE.

Times Job Departm't  
Quality Printing Phone 133

Stationery Booklets  
WE INVITE the privilege of estimating on printing of practically any character. Most of our work is stationery—Letter Heads, Envelopes, Cards, Bill Heads, Booklets, Folders. Let us furnish you with forceful and attractive printing. Phone us; a man will call.

Cards Catalogues

NO HARD TIMES FOR THOSE WHO ARE JUDICIOUSLY USING SPACE IN THE TIMES TO TELL THE PEOPLE ABOUT THE THINGS THEY HAVE TO SELL, TRY IT ONCE