

Productive Rogue River Valley and Jackson County, Oregon

(Continued from Page 2.)

cation and surroundings, being west of the Cascades, a low altitude, the Valley has the same mild climate found along the Coast, from Puget Sound to Southern California, due to the influence of the warm Japan ocean currents. The Winter months are mild, with little snow, which usually melts rapidly. The 28 inches of rain comes from October to April, with occasional showers during the Summer.

There is an average of 270 days of sunshine and there is always an evening breeze. The humidity is very low. The hottest days in Summer the humidity is between 15 and 20. The nights are cool. The average minimum temperature during the Winter is just below freezing or 31 degrees.

Damaging winds are not experienced.

Water Resources.

Water available for irrigation and power is one of Jackson County's valuable resources. Rogue River and its tributaries drain the entire area, and according to the State Engineer, has 300,000 horsepower, with a total annual run-off of 3,200,000 acre-feet of water, so Jackson County has an abundance of water for all purposes. The large planned irrigation projects started are yet uncompleted.

It is estimated that 2000 acres of land is irrigated by means of electric pumping and alfalfa fields of 100 or more acres are irrigated. The cost of pumping varies, according to the lift and size of plant. The cost to raise one acre-foot 100 feet by electricity is \$2.80 per year, and the cost of the plant, \$5 to \$10 per acre.

Water Power Development.

One of the large prospective uses for electric power is for electric roads. The largest developed power plant is at Prospect, where 7000 horsepower is generated. This is capable of expansion to 40,000. One hundred and twenty-five families in the Valley cook with electricity, 80 per cent of the total county population use electricity for lighting, as the service is extended into all rural districts.

Timber Resources.

Two-thirds of the acreage of Jackson County is classified as timber land, 850,000 acres is privately owned, 427,000 acres in natural forests. The estimate of merchantable timber has a total of 23,000,000,000 feet and contains some of the largest standing bodies of sugar pine found in the United States. Comparatively little use has been made of the timber resources up to this time, as only a few small mills have operated.

Minerals.

The mineral resources of Jackson County are first among all the counties of the state, according to special investigators of the Oregon Bureau of Mines and Geology. The placer gold fields of Southern Oregon have yielded \$150,000,000 since their discovery.

Large coal deposits are now being thoroughly tested. These veins range from 8 to 12 feet in thickness.

Building stones offer an inviting field to the developer, which include granite, sandstone and marble from pure white to black, with grain rivaling Vermont quarries.

The great need toward the development of a road to the coast, only 100 miles, here it could be loaded upon transports with wide market possibilities.

Special opportunities might be summarized and emphasized as: Lumber mills and box factories, alfalfa meal mills, additional fruit and by-product plants, dairies and beet sugar factories.

Good Roads.

September, 1913, Jackson County voted \$100,000 for the construction of a modern, first-class, hard-surfaced highway more than 50 miles in length, through the Rogue River Valley. A unit of the Pacific Highway from British Columbia into Mexico—Jackson County was the first county in the state to improve this unit of the Highway—a leader in the agitation of good roads in Oregon. We have 17 miles of the Highway completed and 13 miles over the Siskiyou Mountains graded and will be hard-surfaced early this Summer.

For the Tourist.

Jackson County offers many varieties of mineral springs, mountain streams and unrivaled fishing, wildernesses with bear and cougar, historic Table Rock, Mill Creek Falls and Crater Lake, some of the scenic wonders of the world, the Medford gateway, and just across the line in Josephine County are the Marble Caves, promising when fully explored, to equal the caves of Kentucky. The Rogue River offers royal sport in fly fishing for steelhead (rainbow) trout, ranging from 3 to 10 pounds.

Medford.

Medford, with an estimated population of 11,000, is located in the center of the valley and the most important financial, shipping and port, and is now a growing city. No city the size of Medford has a greater length of first-class streets, having a total of 22 miles, miles of sewers, 28 miles of water mains, 28 miles of cement walks, and a complete gravity water system, costing \$1,000,000.

Pianos of Highest Quality



Would you like to go to the Panama Exposition in San Francisco at our expense? We are offering free trips in connection with our "500 Piano Club." Let us explain how easy you can go. Call, write or phone today. It is to your interest.

HAVE YOU INVESTIGATED OUR "500 PIANO CLUB?"

"These are the times for you to purchase to the greatest advantage" and this is really one money-saving opportunity that you cannot afford to overlook.

We are not going to be satisfied until every musicless home in Portland and vicinity has read of our great "500 Piano Club" and considered it carefully. Have you read the comparison of prices and noted the liberal discounts this "500 Piano Club" gives you? You should investigate this really one money-saving opportunity, if you feel that you would like a piano in your home.

You simply associate yourself with 499 others and secure a piano on a wholesale buying basis.

Buying and selling, as we do, in large quantities, on our little-profit-per-piano basis, we have always made the lowest

"A poor piano can never be a good bargain, but a good piano may be a bad bargain." There are two essential factors in the purchase of a piano—QUALITY AND PRICE.

WE CARRY THE LINE OF HIGHEST QUALITY.

Pianos that have proven their worth by 50 to 92 years of satisfactory service. Our line is headed by the world-renowned Chickering, the piano that is oldest in years and highest in honors.

How are you going to judge the quality of a piano? To be able to judge a piano from a mechanical as well as an artistic standpoint requires years of study and experience. You must know its construction from the raw material to the finished product.

WE HAVE MADE IT OUR BUSINESS TO KNOW.

How to judge a piano, and we select pianos that represent the very best values at their respective prices the world affords.

We will gladly give you the benefit of our knowledge, at any time.

Our policy is low prices; our practice economy in every department of our business.

When you consider that the "Eilers Music Houses" are the leading piano concerns in all the prominent cities on the Pacific Coast, you get an idea of the magnitude of our business and judge yourself of our standing and ability to buy at the greatest factory discounts.

possible retail prices. By taking advantage of the "500 Piano Club" you secure a saving that you cannot possibly obtain otherwise in buying a new piano.

Write us today and let us outline to you the fairest, best safest and most economical piano proposition ever made. Convenient terms can be arranged.



Eilers Building
BROADWAY
AT ALDER

PORTLAND, OREGON

\$275,000. The city is supplied with gas, electricity and power, and has several four-story office buildings, a public park, a \$20,000 library, a \$140,000 hospital, a \$75,000 natatorium, several fine hotels—one five-story, erected at a cost of \$125,000—four banks, a \$50,000 opera-house, the key station of the United States Weather Bureau, splendid stores, a Federal building now being erected at a cost of \$110,000, five large schools, an academy, 11 churches, 20 lodges, a College Woman's Club, a University Club representing 43 colleges, a Golf and Country Club with 100 acres of ground, an active Woman's Civic Improvement Club and Commercial Club. Two modern daily newspapers and an electric streetcar system.

A Land of Plenty.

If one were ever justified in lauding the possibilities of any land, he is certainly justified in giving this beautiful Valley and its throbbing wide-awake heart, the progressive city of Medford, a full measure of praise. The object of this article is to tell the people from outside, that they may know and enjoy, if they will, this garden spot of the West. Those who live there know of no other place so attractive—none with such possibilities. The writer has endeavored rather to underestimate than to exaggerate, knowing that so much can be said in favor of this favored Valley, that even the plain, unvarnished truth would seem to come as the limit of exaggeration.

Wool Clip in Washington in First-Class Condition

THE wool clip in Washington this year is coming from the sheep in first-class condition. The growers in most cases are selling early and shearing is anywhere from 15 to 30 days ahead of time. Coarse wools seem to be selling very freely at what is considered the market price.

The Hibbard-Stewart Company, of Seattle, Wash., purchased the Coffin clip of wool at North Yakima and their various camps on a basis of 22 cents to 23 cents per pound, according to the cleanliness. This clip consisted of about 250,000 pounds of wool. The same firm also bought the Satus Stock Company's wool, at Toppenish. The good coarse wools from eastern points have been mostly cleaned up, but Mr. Hibbard, of the above mentioned firm, today stated that they were active in purchasing Puget Sound valley wool and also any good, clean clips of wool from coarse wool sheep.

As to the value of wool in the near future, it will be entirely determined as to whether the war in Europe will be prolonged or not. But the advice from people who know is to the effect that it is better to shear early and sell early this year.

Refused to Leave.

Lawyer—You say you told the servant to get out of the house the minute you found it was on fire, and she refused to go?

Mrs. Burns—Yes, she said she must have a month's notice before she'd leave.

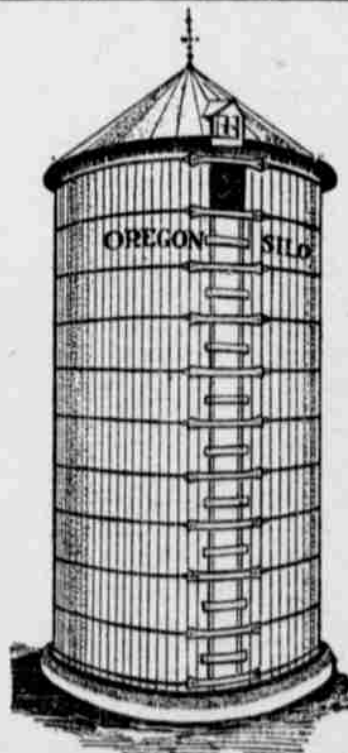
The Stay Round Silo

If you have made the mistake of buying a Silo that is not keeping itself straight, we will put on our appliances and then guarantee it to stay straight five years.

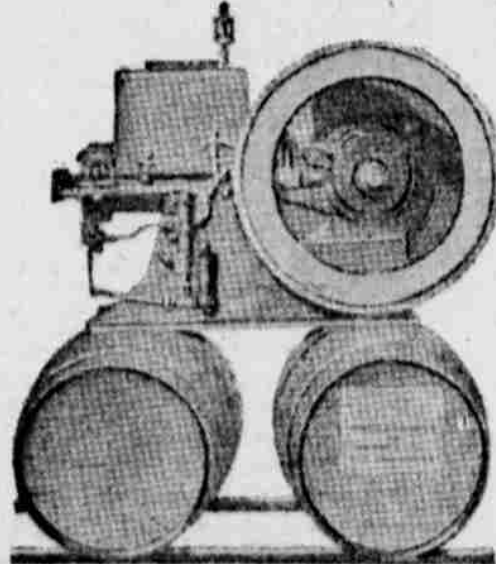
If you have not bought a silo, don't make the above mistake, as remedies are always expensive.

Get the A. O. C. bulletin that tells you how to take care of the silo and see how much trouble it is, and then buy the Oregon Stay Round Silo, and save yourself all this trouble.

Ask for catalogue of the silo, and also of the Climax Ensilage Cutter, the lightest-running cutter made, and the Raleigh-Schryer Gas Engine.



Oregon Silo Co.
208 Northwest Bldg., Portland, Or.



When you see an engine balanced like this you will see one that will give the greatest service with the least wear. This is a photograph of a Raleigh-Schryer Gas Engine running at its regular speed for 48 hours without even shaking these barrels.

Oregon Silo Co.

208 Northwest Bldg.
Portland, Or.

If there is any particular commodity in which you are interested, and you do not find it advertised in these columns, let us help you. Write advertising manager, Oregon-Washington-Idaho Farmer, Oregonian Building, Portland, Or.