

When Quality Is Desired
You will find it, and find it guaranteed, in



Crescent Baking Powder
One pound can sold by your grocer costs 25 cents.
CRESCENT MANUFACTURING CO.
Seattle, Washington



WOOD TANKS
For Water, Oil, Wine, Mining and Cyanide.
Pacific Tank & Pipe Co.
275 Oak Street, Portland, Or.



RAG SAWS
Your wood with a Vaughn Port-Drag Saw, weighs only 240 lbs. Can be handled by one man or two men on any kind of ground.
VAUGHN MOTOR WORKS,
East Seventh St., Portland, Or.
South Agency 78 Marion Street.
For a Full Description Write Us.

DROUTH
Your soil to retain moisture and bigger crop yields by making a bed with the
IMPERIAL PULVERIZER
for subsoil and crumbers, rolls, levels and the topsoil. Does the work of many—all in one trip.
Saves extra trips over the plowed ground.
Peterson Mfg. Co., 178 River St., Kent, Ohio.

TRADES — TRADE Your Farm
KINDS OF HOUSES TO TRADE FOR FARMS.
T. J. LONG
1st Building, Portland, Oregon.

News Notes of Northwest

Rain Breaks Drouth.
BAKER, Or.—One inch of rain fell here today, breaking the threatened drouth and it assures splendid crops in the Baker Valley. The rain is very welcome, due to the fact that there is not as much snow in the mountains as usual.

Broccoli Shipped.
ROSEBURG, Or.—The first carload of broccoli shipped from Douglas County to Eastern markets has brought \$2 per crate, or \$1650 per carload.

The price received is very satisfactory to the growers and the acreage will be increased in this locality this year, at least ten times what it was last year.

Furniture Store Sold.
ALBANY, Or.—The big furniture store of this city was sold to H. C. Girard, of Montesano, Wash.. The sale means the reopening of the plant on a large scale. This is one of the most important industries of Albany, and the reopening of this plant, together with other plants, now running, means that Albany will not be lacking in work for the unemployed men this Summer.

Hope to Check Brown Rot.
VANCOUVER, Wash.—D. F. Fisher, of the Bureau of Plant Industry of the National Department of Industry, has been studying brown rot in this locality and reports, from experience, that the evil effect of brown rot will be checked this Summer and that the prune crop will be above normal.

China Pheasants Imported.
DAYTON, Wash.—One hundred and twenty young china pheasants have been received this week from Pennsylvania by the Columbia County Commission. The pheasants arrived in splendid shape and will be distributed throughout several districts in this county.

County Bridge Assured.
SAND POINT, Idaho—It seems to be an assured fact that the proposed county bridge across the Pend d'Oreille River will be built this Summer and that it will take the place of the ferry which has long been in use in this place. The bridge will be 110 feet long and will be of the best construction.

Arrange to Ship Cherries.
WENATCHEE, Wash.—It is hoped that the cherry crop in Wenatchee Valley will equal 100 to 125 tons and arrangements have already been made to ship them to the Oregon Packing Company of Portland. This industry means much to this valley and many acres are being planted.

To Build Good Roads.
LEWISTON, Idaho—\$100,000 has been provided by bonds for constructing seven and one-half miles of hard-surface road between Lewiston and surrounding orchard tracts. The contract is being let to the Warren Construction Company, of Portland.

Prepare Big Bond Issue.
LEWISTON, Idaho.—The preliminary steps for a bond issue of \$5,000,000 for extending the Nez Perce and Idaho road this year into the rich farming section in Northwestern Idaho, were taken recently.

Hope Good Prune Year.
DUNDEE, Or.—The annual meeting of the Dundee Fruit Growers' & Packers' Association met recently and report that that last year's prune crop was readily disposed of at a good figure. The stockholders expressed satisfaction as to the year's results. Prune trees are heavily laden with blossoms and a bumper crop is assured for this year.

Heavy Rain Helps Wheat.
WALLA WALLA, Wash.—The heaviest rain in weeks fell today, overflowing the roads and thoroughly wetting the wheat fields in this district, making the wheat crop in this locality an absolute certainty.

To Open New Section.
MORTON, Wash.—The Tacoma & Eastern branch of the C. M. & S. P. Railroad will build down the Tilton River and connect at Morton with the Onalaska Lumber Company road, about 20 miles west of Morton. This will open up one of the finest farming sections in the state.

Disposes of Big Farm.
PULLMAN, Wash.—A. D. Durkee has disposed of his 480-acre farm west of Pullman to T. F. Lyons, of Walla Walla, for \$80 per acre, making the total price \$38,400. Mr. Lyons expects to improve the farm in the near future and make it one of the finest in that section.

Spraying for Lice on Stock.
Using an ordinary hand sprayer, spray stock with Blackleaf-40, one teaspoonful to each gallon of water plus whale oil soap at the rate of one ounce to each gallon of spray. Apply thoroughly to all parts of the infested animal and repeat seven days later to catch those forms which may have escaped in the egg state, say the O. A. C. authorities.



Your Crop Returns

Depend upon the size of the yield, and the yield is closely related to the productiveness of the soil. Keep your soil fertile and productive by applying

Beaver Brand Animal Fertilizer

"A Fertilizer for Every Crop."

It revives strength—gives new life—replenishes the soil with the necessary plant food to insure a large, healthy harvest.

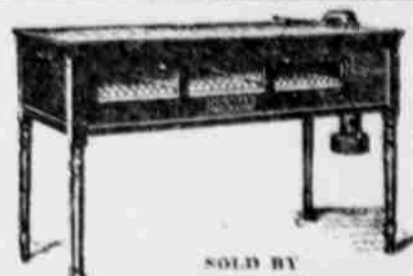
Whether you raise grains, fruit or vegetables, NOW, while your land is idle, is the time to revitalize it with this famous fertilizer—a Northwest fertilizer—made in the Northwest by the PIONEER fertilizer manufacturers of the Northwest.

Fertilizer Booklet F-48 Free, Contains Information of Value.

Made by

UNION MEAT COMPANY.

NORTH PORTLAND, ORE.



THE JUBILEE FOR QUALITY

I would not give one cent for an incubator that brings off a 100 per cent hatch without knowing it brought off 100 per cent strong, vitality-vigorous chicks.

Professor W. E. Graham, of the Ontario Agricultural College reports 65 per cent more mortality in dry machines than moist incubators.

In the JUBILEE that warm, fresh, moist oxygen-laden air flowing through the egg chamber brings chicks that thrive and grow to maturity. Write for particulars.

SOLD BY

JUBILEE HATCHERY

D. M. HOLBROOK, Prop.
415 Jessup Street, Portland, Or.

DAY OLD CHICKS	From	Reds, per 100.....	\$13.00
	Heavy	Rocks, per 100.....	18.00
	Layers	White Leghorns, per 100.....	12.00
		White Wyandottes, per 100.....	18.00

Pacific Poultry Co.

105 Seneca Street, Seattle, Washington.

Conkey's POULTRY TONIC
Makes Chicks Healthy and Strong
Vitality and vigor are necessary if the chicks are to thrive and mature quickly.
CONKEY'S gets them started right and keeps them growing. Package of 100, 250, 500, 750, 1000 and 2500.
CONKEY'S WHITE DIARRHEA REMEDY should be given in the drinking water from the start. It will help to bring your chicks through safely—age and sex. Send 4¢ for Conkey's Poultry Book—worth dollars to you.

THE G. E. CONKEY CO., 151 Conkey Bldg., Cleveland, O.

Our Baby Chick Hatchery
will start January 1. Place your order now for chicks from high-bred WHITE, LEGHORN egg-producers. Some of our birds have a record of 280 eggs.
Catalogue and prices on application.
An Honest Incubator At an Honest Price
Hot Water, Copper Tank, Self Regulating, Chick Nursery, Silver Lamp, tested thermometer, heat FREE TRIAL, construction of other models all over with advance features such as: 1. A simple and so-called 100 parts by machine. Get our catalogue and see delivered price. Brochure sent \$0.75 up.
Dr. Helene Incubator Co., Toledo, Washington

WE ARE CASH BUYERS FOR YOUR POULTRY, EGGS, VEAL AND HOGS. NO COMMISSION.
Highest Prices Always—Try Us.
PATTERSON & CO.
54 Front Street, Portland, Or.
Reference: Northwestern National Bank.

MORE EGGS
PACIFIC PIONEER
AVAILABLE PROTEIN FOR POULTRY
NO FISHY FLAVOR
CHEAPER TO FEED

BLACK LEG
LOSSES SUBBLY PREVENTED
In Cutter's Blackleg Pills. Low-priced, fresh, reliable, prepared by Western stockmen because they get that where other remedies fail. Write for booklet and testimonials. 10-cent plus, Blackleg Pills \$1.50. 25-cent plus, Blackleg Pills \$2.50. You see, however, that Cutter's has years of specializing in various and serious ills. Inset on Cutter's. It's undeniably the best. **THE CUTLER LABORATORY, Berkeley, California.**

Fish Bite
This hungry wolverine feeds with Hodge Fish Lure. Hodge Fish Lure never disappoints. Keeps you busy pulling them in. Write to-day and get a box to help increase your profits. Agents wanted.
J. J. Gregory, Dept. 83, St. Louis, Mo.