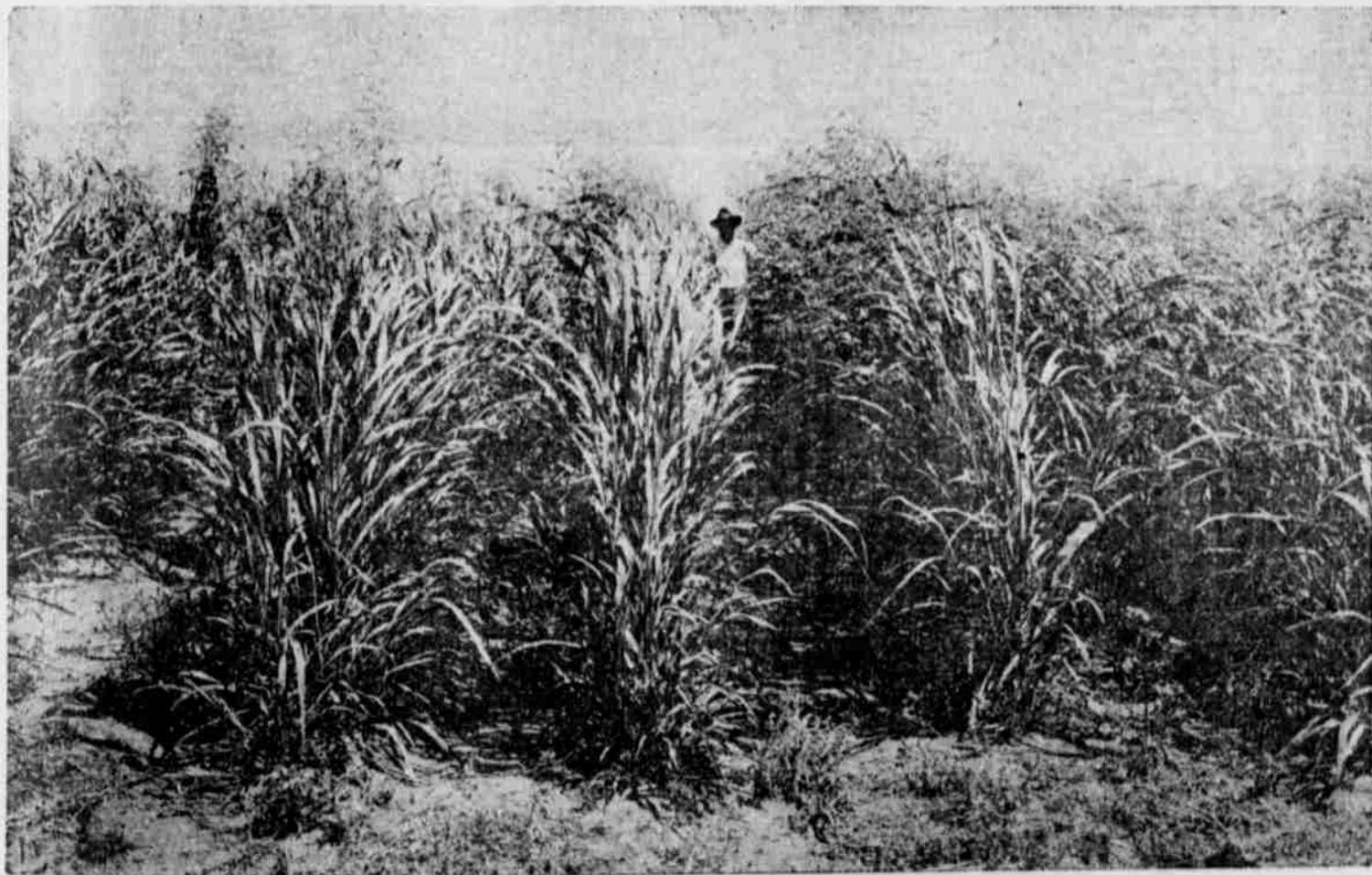


HOME AND FARM MAGAZINE SECTION

Oregon Bay Times

MARSHFIELD, OREGON

SATURDAY, MARCH 27



Field of Sudan Grass on 200-Acre Farm of E. J. Cowart, Lubbock County, Texas, Before Maturity. Note Dense Foliage of Plants Under Dry Farming Conditions in a Country Classed as Semi-Arid.