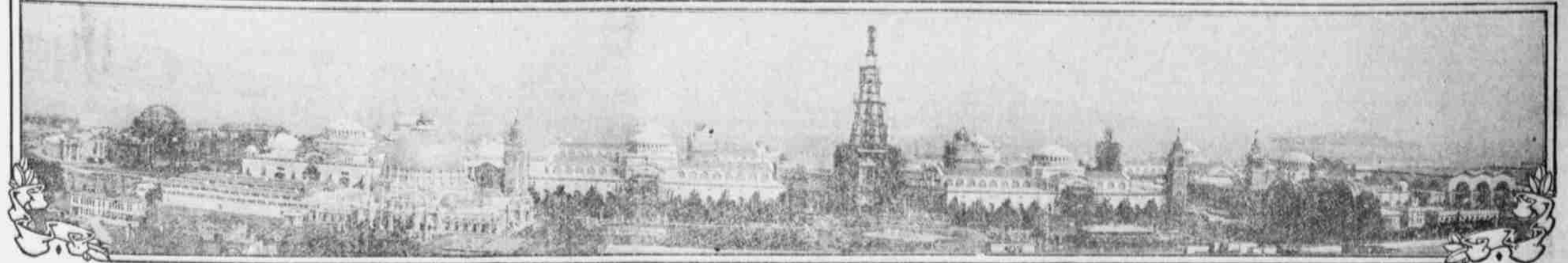


**A HAPPY NEW YEAR TO YOU
SCENES AT THE PANAMA-PACIFIC EXPOSITION AT SAN FRANCISCO**

MILLIONS OF VISITORS TO COME TO THE WEST IN 1915



VAST PANAMA-PACIFIC INTERNATIONAL EXPOSITION LODESTONE TO MULTITUDES TO "SEE AMERICA FIRST"—MAGNIFICENT EXHIBIT PALACES ON SHORES OF SAN FRANCISCO BAY.

THE above panorama of the grounds of the Panama-Pacific International Exposition, taken six months before the opening days, is an answer to the question, "Will the war cause a postponement of the Panama-Pacific International Exposition?" It will not.

The photograph shows only a part of the entire Exposition area of 635 acres, but it shows that the Exposition was 90 per cent completed the day the European conflict started. The war will not even harm the Exposition.

Any loss in exhibits is made up in the requests for additional space from Japan, the orient, South America and nonwarring nations of Europe. There has been not a single withdrawal by any nation because of the war, and assurances have been received from two of the belligerent countries that Exposition participation will proceed. Loss in attendance from Europe will be offset by increased attendance from the United States, South America, Central America, the orient, Australia, New Zealand and the noncombatants in Europe who want to escape war's horror.

In the accompanying photograph, taken from a hilltop 900 yards away, an impression of the size of the exhibit palaces of the "Walled City" is given. Of the eleven exhibit palaces ten are completed, and the Palace of Fine Arts, which is of steel and concrete and absolutely fireproof, will be ready before this story is published.

No better criterion of the progress of the Exposition may be had than the record of the paid admissions. The average is now more than 50,000 persons a month at 25 cents. The total admission receipts from Sept. 9, 1913, to Aug. 30, 1914, was \$101,000.

The largest single day when there has been no special event on the grounds was a recent Sunday, when 8,250 persons paid at the gates. The largest attendance for a special event on the grounds was 18,000 paid admissions at the Hall of All Nations on May 2. The Exposition will open on Feb. 20 and close Dec. 4, 1915.

THE COOS HOTEL
Formerly of Marshfield
WASHINGTON AVENUE
STADEN STREET
NORTH BEND
C. A. Metlin, Prop.

SOUTH COOS RIVER BOAT SERVICE
LAUNCH EXPRESS
Leaves Marshfield every day
8 a. m. Leaves head of river
at 3:30 p. m.
STEAMER RAINBOW
Leaves head of river daily at 7
a. m. Leaves Marshfield at 2 p.
m. For charter apply on board.
ROGERS & SMITH,
Proprietors.

HAVE THAT ROOF FIXED NOW
See **CORTHELL**
Phone 3171.

DRY WOOD
—AT—
CAMPBELL'S WOODYARD
North Front Street,
Phone 379.

THE ALICE H.
SPECIAL EXCURSION TO CHARLESTON BEACH SUNDAY
Leaves Marshfield at 8 A. M.
ROUND TRIP 50c
Makes connection with auto for Sunset Bay and Shore Acres writing for appointment.
Marshfield, Oregon

New Models
"HENDERSON CORSETS"
also principal distributors
"ONYX" and "CADET"
HOSE
S. S. JENNINGS, No. Bend

AIN'T IT THE TRUTH.
We never blame the tailor when our pants we have to pin.
We never blame the shoe man when our soles grow old and thin.
We never blame the hatter when our lids we have to flout.
But we always blame the laundry when our shirts wear out.
COOS BAY STEAM LAUNDRY.
Phone 57-J.

SAVE MONEY
by ordering the famous
Henryville Coal
Nut coal, per ton \$4.00
Lump coal, per ton \$6.00
Or, half ton of both \$5.00
D. MUSSON, Prop.
Phone 18-J, or leave orders at
Hillyer's Cigar Store.

Low Rates for Handling Trunks
We haul trunks between any points in Marshfield and do general hauling for reasonable rates.
STAR TRANSFER & STORAGE CO
Levi Heiser, Proprietor
Phones: 120-J, 49-L, 98-B

20 Commutation Tickets \$2.00 20
Marshfield-North Bend Auto Line
Cars every ten minutes from 6 a. m. to 12: 0 p. m.
GORST & KING, Props.

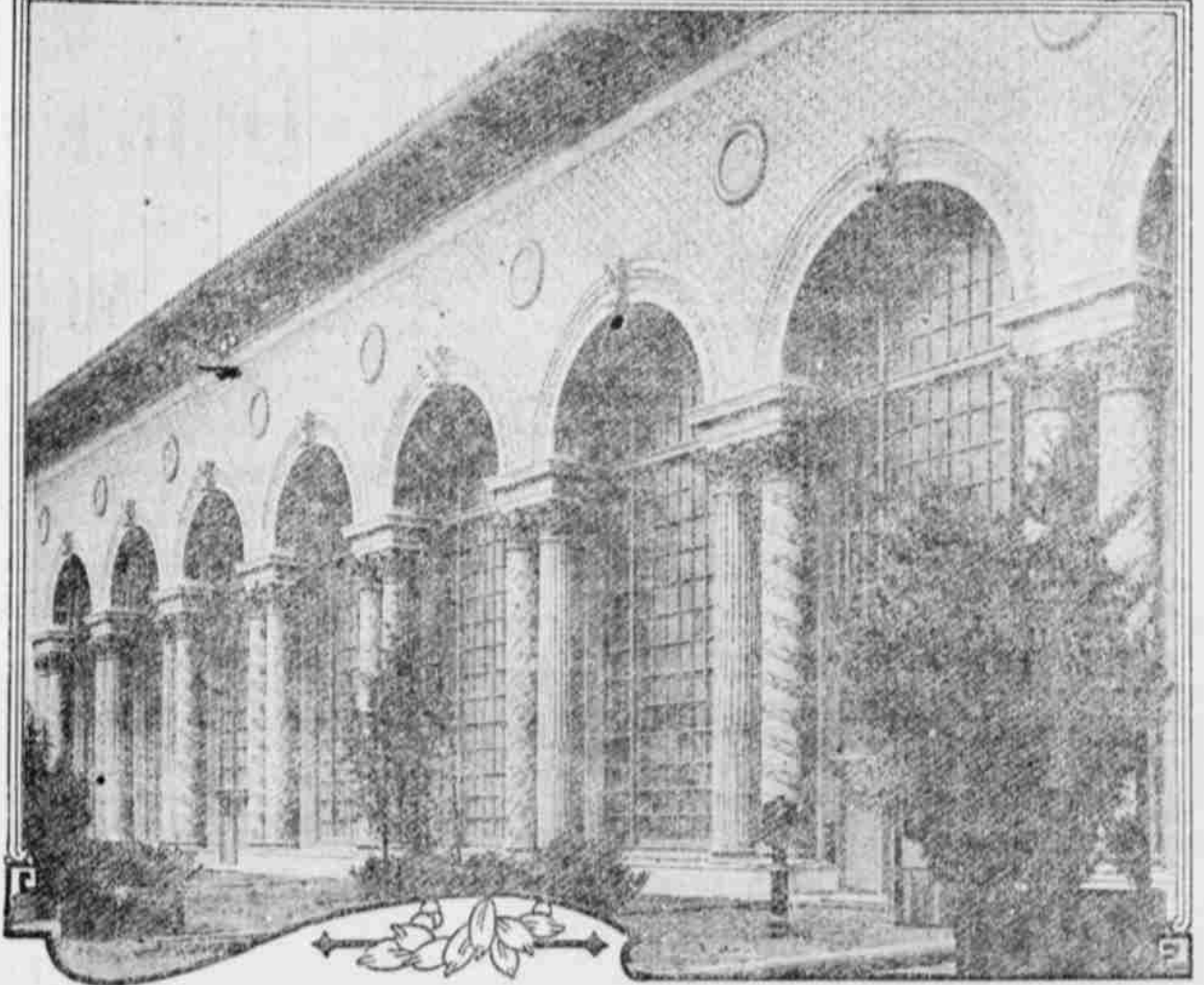
YOU AUTO CALL FOR FOOTE'S AUTOS
Four good cars with careful drivers
For day service, phone 144-J,
Blanco Billiard Parlors.
For night service, Phone 260-L
Right Cafe.
D. L. FOOTE.

CHIMNEYS FIRE PLACES
J. N. BAYLISS
Any Kind of Brick Work at
Prices That Are Right
And all Work Guaranteed
Call at "The Fireside," Johnson
Bldg., 137 Second St. Phone
434-J.
French Ranges. Boiler Work

Pictures & Framing
Walker Studio

MERCHANT'S CAFE
Popular place for
Good Meals.
Prices Reasonable.
Cor. Commercial & B'd'wy

Superb Venetian Court of the Panama-Pacific International Exposition, San Francisco, 1915

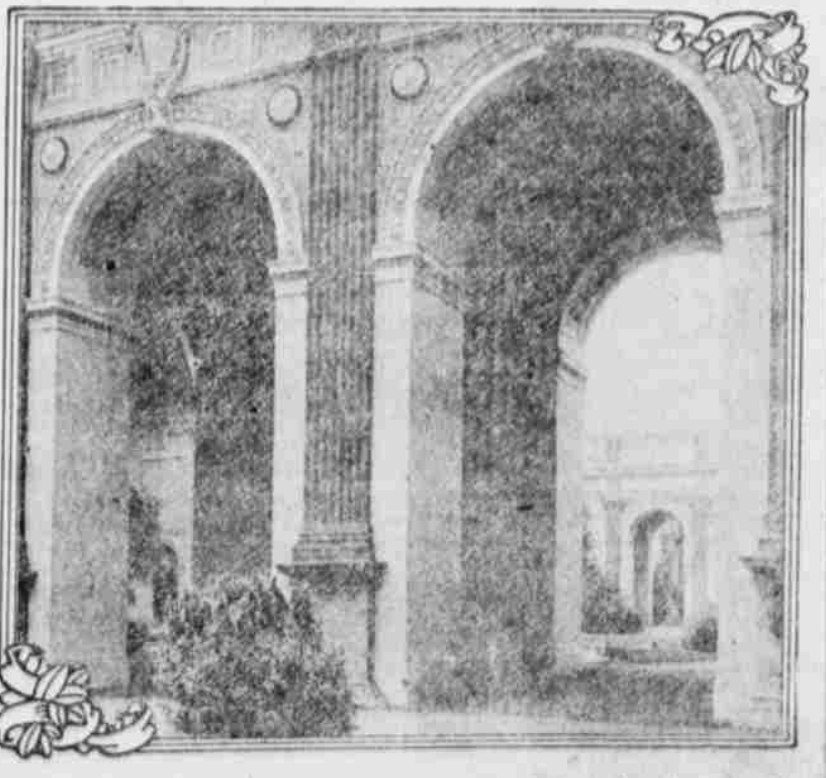


VARIETY of color and the use and blending of Doric, Ionic and Corinthian, with a little play given to the Byzantine architectural style, are shown in the two Venetian courts of the Panama-Pacific International Exposition at San Francisco in 1915. These courts are the connecting links in the Exposition scheme of courts, but they are to have a type of beauty not found elsewhere on the grounds.

One of the Venetian courts connects the Court of the Four Seasons with the Court of the Universe, and the other connects the Court of the Universe with the Court of Abundance. The first one named is shown above.

Every bit of the interior of the courts is a part of a color scheme that includes all of the Exposition colors. Since this photograph was taken the shrubs and flowering plants have been placed on all sides of the central paths, and their colors are in harmony with every pigment used in the remainder of the court.

Lofty Colonnades of the Superb Court of the Four Seasons, Panama-Pacific International Exposition, San Francisco, 1915



THIS photograph faintly portrays the beauty of the arches that stand between the Court of the Four Seasons and the Western Venetian Court. While it truly presents the attractiveness of the architecture, it cannot even hint at the beauty of color tones.

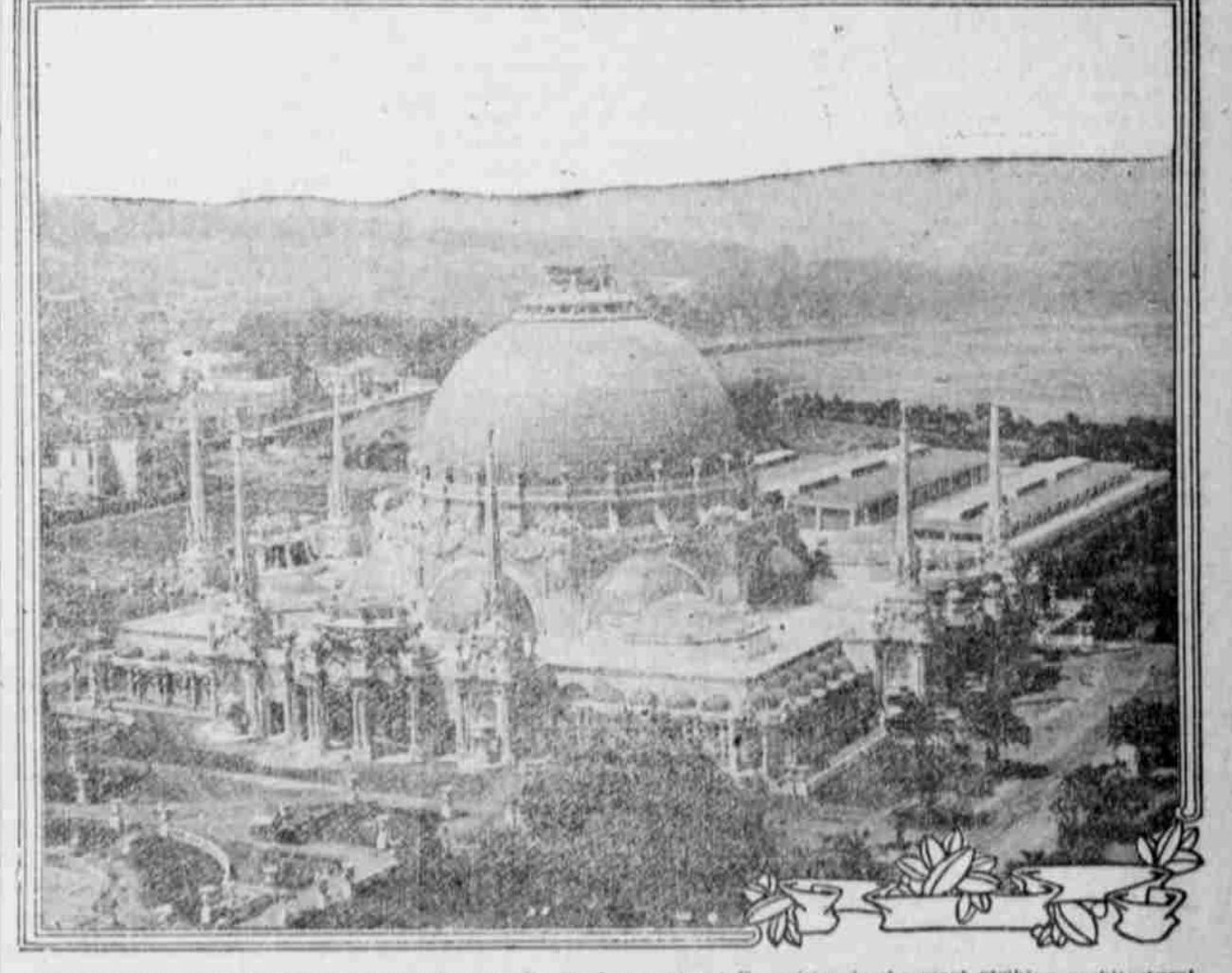
The pilasters shown in this photograph are of verd antique bronze, the background of imitation Travertine is of ochre hue more than half the height of the arch, and the upper portion is of Pompeian red, with touches of orange and copper green in the ornamentation.

Inside the arches the ceilings are of cerulean blue, and bas-relief in white shows scenes typical of the seasons. The square wall surface at the left of the picture shows where one of many mural paintings will be placed.

Looking through the arch, a part of the Court of the Four Seasons may be seen. Closer inspection shows a verge from Spenser and below it the signs of the Zodiac.

The world is to be given something new in the system of courts at the 1915 Exposition, and each one is to be a revelation in modern construction. The Exposition will open at San Francisco on Feb. 20, 1915.

Stupendous Palace of Horticulture, Panama-Pacific International Exposition, San Francisco, 1915



THE Palace of Horticulture of the Panama-Pacific International Exposition is the most striking architectural triumph ever created for any Exposition. Whether the sweep of the Exposition's 635 acres is viewed from the distant hills or from a nearer view, this commanding edifice attracts early attention and admiration.

The great dome is the largest hemispherical glass dome in the world. It is 185 feet high and has a diameter of 152 feet. It is crowned by a mammoth basket. Surrounding this dome are the spires that give the Saracenic influence, and these are of a marble whiteness and surrounded by beautiful sculptured figures of young women.

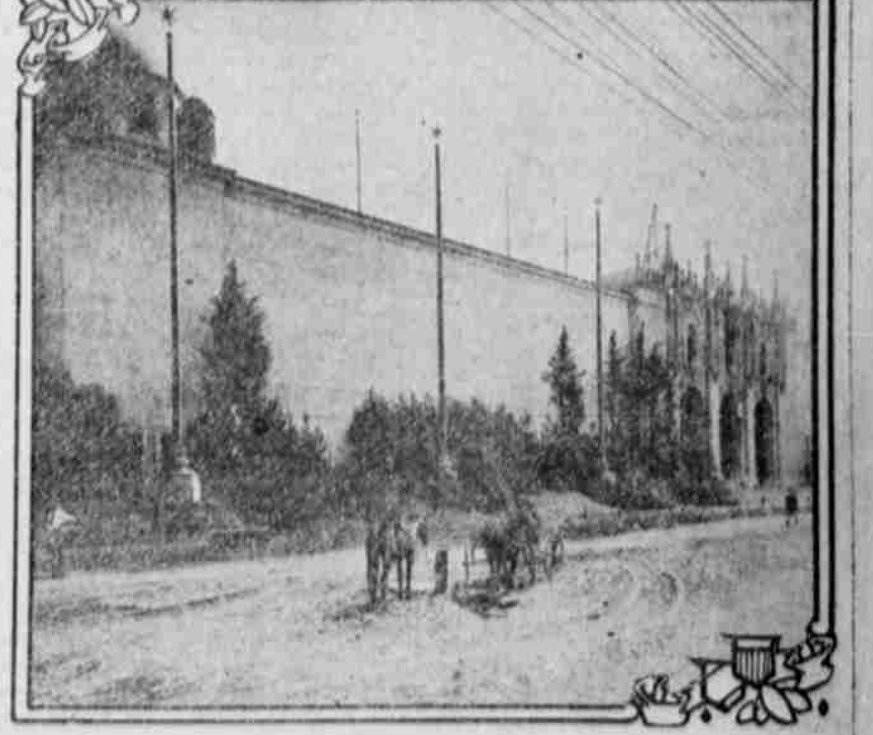
In a general way the palace follows the ideas incorporated in the mosque of Sultan Ahmed I. The decorations and rich ornamentation have the French renaissance feeling. The numerous smaller domes that surround the building have latticed work, where rare vines and flowers will bloom to give added beauty to this building typical of plants and flowers. The extreme length of the palace is 600 feet and the width 300 feet.

Toys Ninety Feet High at Panama-Pacific International Exposition, San Francisco, 1915



THE tallest toys in the world are being constructed for Toyland Grown Up, a twelve acre playground in the great fun section, "The Zone," at the Panama-Pacific International Exposition. The figure of the lady on the left is Miss Emuallie Inogene Equal Rights Parkhurst. The figure on the right is the "Tin Soldier." Both are ninety feet high.

World's Greatest Agricultural Display to Be Made in Vast Palace of Agriculture at Panama-Pacific Exposition, San Francisco, 1915



THE accompanying photograph was taken of the Palace of Agriculture before the Esplanade was given the asphalt pavement which it now has. This facade of the Palace of Agriculture looks out upon the Marina and the waters of San Francisco bay.

The outside height of this building is ninety-six feet. It is 579 by 635 feet and was erected at a cost of \$425,010. The opening at the left opens on the Court of the Universe, which is to be one of the architectural wonders of the entire Exposition.

The portals shown at the right are beautifully wrought and rich in color. The central niche is occupied by a sculptured figure of the Conquistadora. On either side of this in slightly lower niches are figures of the Pirate, which stand eleven feet high.

The wall surface is of imitation Travertine and present a pinkish ochre tint. At the eaves other tones are used, and the dome shown here is of orange, while the base of the dome bears a blending of pinks, copper green and blue.

This palace is directly opposite the yacht harbor, which is to be the scene of thrilling events in 1915.