

EQUIPPED WITH EVERY FACILITY

FOR HANDLING ACCOUNTS IN A PROMPT AND RELIABLE MANNER—THIS BANK SOLICITS THE BUSINESS OF CORPORATIONS, FIRMS AND INDIVIDUALS : : : : IF YOU HAVE NEED FOR A SATISFACTORY BANKING SERVICE—WE CAN FILL IT : : : : :

SERVICE THAT SATISFIES

The First National Bank Of Coos Bay

STATEMENT OF CONDITION OF

Managan & Bennett Banks

Marshfield and Myrtle Point Oregon, at the close of business, June 30, 1914.

RESOURCES	
Cash and discounts	\$635,994.25
Real Estate and Real Estate	64,973.94
and Sight Exchange	227,174.72
Total	\$928,142.91
LIABILITIES	
Capital Stock Paid In	\$ 75,000.00
Reserves and Undivided Profits	71,409.87
Deposits	781,732.94
Total	\$928,142.91

LY WOOD

—AT—
BELL'S WOODYARD
North Front Street,
Phone 180-J.

Commutation Tickets \$2.00
Old-North Bend Auto Line
Every ten minutes from 6 a. m. to 12:30 p. m.
ORST & KING, Props.

THE COOS HOTEL

Formerly of Marshfield
WASHINGTON AVENUE & STADEN STREET
NORTH BEND
C. A. Metlin, Prop.

MERCHANT'S CAFE

Popular place for Good Meals.
Prices Reasonable.
Cor. Commercial & B'dw'y

ST. LAWRENCE HOTEL

We have a great many inquiries for acreage and lots. If you will sell at a real sacrifice list your property at the St. Lawrence Hotel or Lloyd Hotel. No commission asked.

E. J. SCAIFE & A. H. HODGINS

Marshfield PAINT AND DECORATING CO.
Estimates Furnished
Phone 399-J. Marshfield, Oregon

NO SAW EDGES

—on—
YOUR COLLARS
If you have them laundered
—at—
TWIN CITY STEAM LAUNDRY

CHIMNEYS FIRE PLACES

J. N. BAYLISS
Any Kind of Brick Work at Prices That Are Right
And all Work Guaranteed
Call at "The Fireside," Johnson Bldg., 137 Second St. Phone 434-J.
French Ranges. Boiler Work

NOTICE TO THE PUBLIC

of North Bend. We have today reopened the dairy, formerly occupied by the Sanitary Dairy, and being equipped with a cold storage, we are able to supply you with a fresh and wholesome product. In connection, we handle all kinds of canned fruits and meats, butter eggs and all kinds of cooked lunch goods, also cheese, chartnages and compounds, doing a cash business and paying cash for all goods we buy. We are able to save you from 5 to 10 cents on every dollar's worth of goods you purchase from us. Save yourself the trip to the wharf and let us fill your milk can, at six cents for one quart, two and more quarts, 5 cents a quart. Apple cider, vinegar, 26c a gal. We solicit your patronage and assure you of a square deal.

LAUNDRY

COOS BAY STEAM LAUNDRY
Phone 57-J. MARSHFIELD

PICTURE GROVE AND PICNIC GROUNDS

Bring your lunch baskets, fishing tackle for a day's outing. Sunday and all picnic crowds. Excursions to Coos River every day. Excursions to Coos River every day. Excursions to Coos River every day. Excursions to Coos River every day.

Dairy & Delicatessen Company

Eureka San Francisco

S. S. GEO. W. ELDER

LEAVES MARSHFIELD WEEKLY EVERY MONDAY P. M. ARRIVES EUREKA TUESDAY A. M.
S. S. F. A. KILBURN LEAVES EUREKA Thursday, June 18, Monday, June 22nd, Friday, June 26, Tuesday, June 30, and Friday, July 3.
NORTH PACIFIC STEAMSHIP COMPANY
C. F. McGeorge, Agent, Marshfield. Phone 44.
W. H. Painter, Agent, North Bend. Phone 421.

THE NEW PASSENGER AND FREIGHT STEAMER

S. S. Geo. W. Elder

TWENTY-FOUR HOUR SERVICE.

PORTLAND TO COOS BAY EVERY SUNDAY, 9 A. M. ARRIVE COOS BAY EVERY MONDAY MORNING
MARSHFIELD TO PORTLAND EVERY THURSDAY
MARSHFIELD TO EUREKA EVERY MONDAY AFTERNOON
NEWLY EQUIPPED SERVICE UNEQUALLED
NORTH PACIFIC STEAMSHIP COMPANY
C. F. McGeorge, Agent, Marshfield. Phone 44.
W. H. Painter, Agent, North Bend. Phone 421.

EQUIPPED WITH WIRELESS.

Steamship Breakwater

ALWAYS ON TIME.

SAILS FROM MARSHFIELD DURING MONTH OF JULY AT 12:30 P. M., ON THE 4TH, 9TH, 14TH, 19TH, 24TH AND 29TH...

Tickets on sale to all Eastern points and information as to routes and rates cheerfully furnished.
Phone 427-L. F. T. SHELDON, Agent

Inter-Ocean Transportation Co.

Semi-weekly service Coos Bay and San Francisco.

S. S. Redondo

SAILS FROM SAN FRANCISCO FOR COOS BAY THURSDAY, JULY 9, AT 3 P. M.

Equipped with wireless and submarine bell. Passengers and freight.

S. S. NANN SMITH

Equipped with wireless and submarine bell. Passengers and freight.

SAILS FROM SAN FRANCISCO FOR COOS BAY SATURDAY, JULY 11, AT 3:00 P. M.

San Francisco office, Greenwich street pier No. 23 and 600 Fife building.
Coos Bay Agent, C. F. McGEORGE, Phone 44.

S. S. PARAISO

Equipped with Wireless. New Steel Boat.
Fine Passenger Accommodations.

S. S. PARAISO WILL SAIL FOR PORTLAND SATURDAY JULY 11, AT P. M., WITH PASSENGERS AND FREIGHT
YELLOWSTONE WILL SAIL FOR SAN FRANCISCO, SATURDAY, JULY 11TH, AT 4 P. M., WITH FREIGHT ONLY.

NORTH BEND MILL & LUMBER COMPANY, Agents

TOM JAMES, Agent, Marshfield.

TO BEAT THE BUILDING GAME

has been a hobby with us for a good many years and a lot of our customers will tell you when it comes to getting good, sound, durable framing material at the right price we know our business. Just tell what you want to build and the amount you want to spend and we'll get busy with our pencil and figure out the best your money can buy. Try us.

C. A. Smith Lumber & Mfg. Co.

RETAIL DEPARTMENT
CUT THE FUEL BILL IN TWO BY USING OUR WOOD
PHONE 190. 182 SOUTH BROADWAY

TYPEWRITERS—All standard makes, sold on easy payments, new and rebuilt. Fox, Underwood, Remington, Royal, Oliver, L. C. Smith, and Smith Premier, for rent or exchange. Cleaning, repairing or new platens, work guaranteed. Ribbons and carbon paper delivered. Phone us your order. Phone 44. Alliance office.
TYPEWRITER EXCHANGE AND SUPPLY CO.

Abstracts, Real Estate, Fire and Marine Insurance TITLE GUARANTEE & ABSTRACT CO., Inc.

HENRY SENGSTACKEN, Manager
FARM, COAL, TIMBER AND PLATTING LANDS A SPECIALTY.
GENERAL AGENTS EASTSIDE
MARSHFIELD OFFICE, PHONE 44-J.
COQUILLE CITY OFFICE PHONE 191.

The Parisian

IRVING BLOCH
FASHION'S CENTRE
ALL-WEEK SPECIAL—LADIES' DEPARTMENT ON SUITS, BOTH NOVELTIES AND PLAIN TAILORED ONE-HALF PRICE.

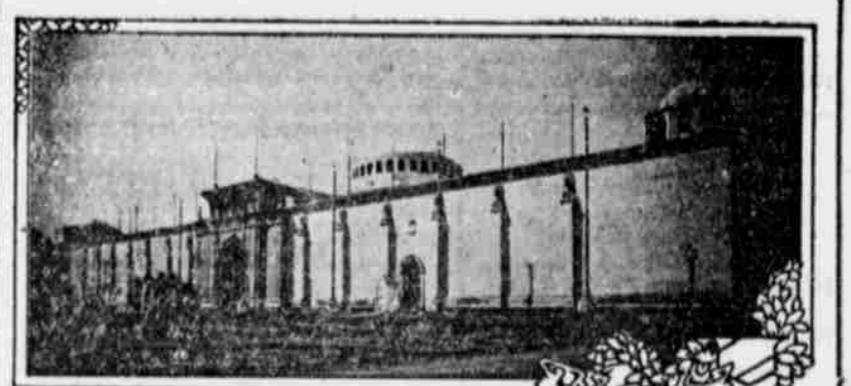
These are composed of all the newest materials and colors. No reservations made. ALL SUITS INCLUDED. Call and look them over. It will be a big money-saving event.
WATCH OUR WINDOWS



Copyright, 1914, by Panama-Pacific International Exposition Co. H. S. Crocker Co., official photographers.

CHINA TO SPEND \$800,000 IN MARVELOUS DISPLAY AT THE PANAMA-PACIFIC EXPOSITION.

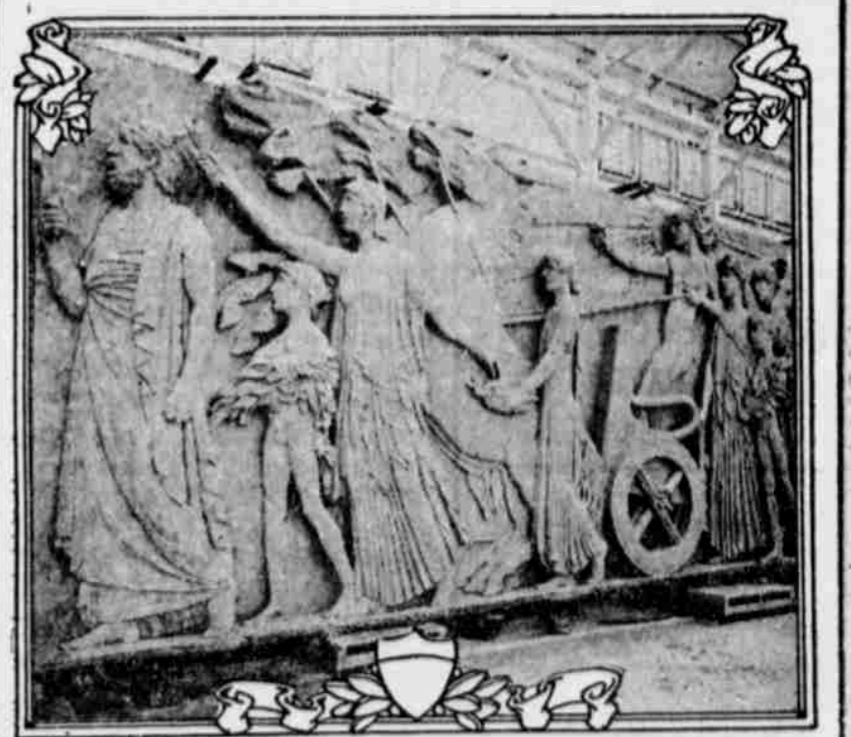
TING CHI CHU, commissioner of China to the Panama-Pacific Exposition, states that China's representation at the Exposition will entail an outlay of \$800,000, of which at least \$300,000 will be expended on the Chinese pavilion, shown above. Chu is a graduate of Harvard. Mrs. Chu, as Miss Pinga Hu, graduated from Wellesley college in 1913.



Copyright, 1914, by Panama-Pacific International Exposition Co. H. S. Crocker Co., official photographers.

FACADE OF THE PALACE OF MINES AND METALLURGY.

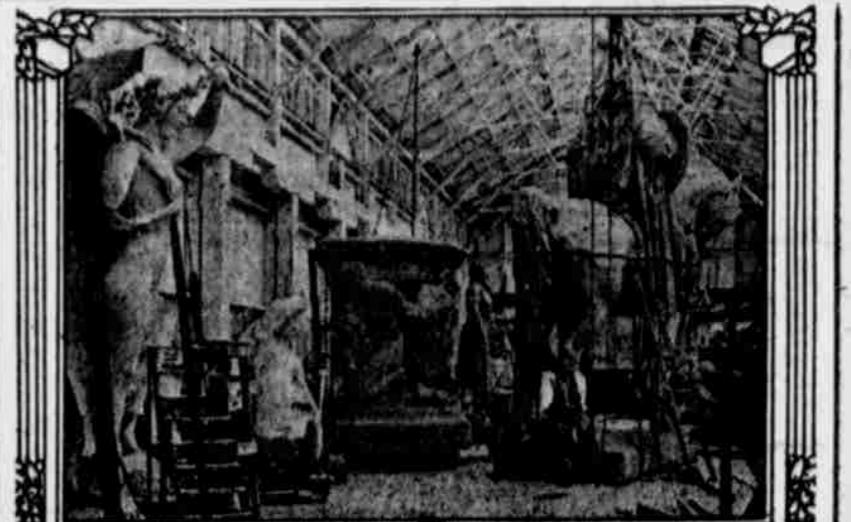
THIS is one of the many great exhibit palaces at the Panama-Pacific International Exposition to open in San Francisco in 1915, now completed. Its exhibits will be dominated by an artificial mountain which will contain working models of every sort of mining and mineral.



Copyright, 1914, by Panama-Pacific International Exposition Co. H. S. Crocker Co., official photographers.

INTERIOR OF A SCULPTOR'S STUDIO AT THE EXPOSITION.

THE picture shows one panel of an enormous frieze, "The Chariot of Pheon," by Bruno Zimm, for the outside of the base of the dome of the Palace of Fine Arts at the Panama-Pacific International Exposition in 1915.



Copyright, 1914, by Panama-Pacific International Exposition Co. H. S. Crocker Co., official photographers.

COLOSSAL STATUARY FOR PANAMA-PACIFIC EXPOSITION.

INTERIOR of one of three studios at the Panama-Pacific International Exposition to open in San Francisco next year, showing the partially completed figures, some of them thirty feet in height, which will adorn the vast courts.