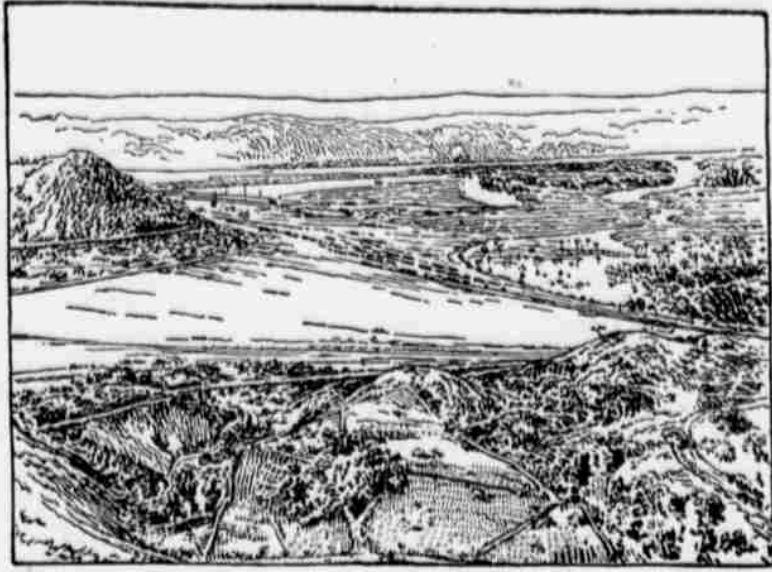


The Story of Panama

"LEARN ONE THING EVERY DAY"



No. 3 The Canal from Balboa to Miraflores

Copyright, 1913, by The Associated Newspaper School, Inc

CENTURIES ago, when Balboa, crossing the Isthmus of Panama, stood upon the crest of the mountains forming the great continental divide and viewed for the first time the distant waters of the Pacific, he never imagined that some day man would bring the waters of this great ocean across the intervening miles to the foot of the mountains upon which he stood. Yet this is what has been done by the Americans since 1905. While the work of constructing the immense locks was going on in the central part of the isthmus, a large force of laborers, with steam shovels, dredges, and other modern machinery, was digging a channel from Balboa, the Pacific entrance to the canal, named after the great discoverer, to the town of Miraflores, where the first locks are located.

A great problem confronted the engineers in the excavating of this six miles of sea level canal; for the Pacific Ocean has a tide of twenty-one feet. This meant that in addition to the digging of a channel deep enough to allow the largest ship to pass through, a retaining bank had to be constructed to prevent the flooding of the surrounding territory at high tide.

Standing upon the top of Ancon Hill, a peak just to the south of the canal, an excellent view is obtained of the work. From this point the canal can be seen from where it emerges from behind Soca Hill, a high knoll about a mile inland from the Pacific entrance, to within a short distance from Miraflores. The entire country for several miles to the south of the canal along this stretch is comparatively low and flat. Immense hills are necessary to protect it from tidal overflow. Thousands of trainloads of earth hauled from the excavations at other places in addition to what was taken from the cut along this section to build this

embankment. While called a retaining bank, it is in reality a new surface, raised to a height of from twenty feet to a hundred feet over several square miles of territory.

The work on this sea level stretch of canal was made even more difficult by the constant floods, caused by the torrents of rainfall during the wet season from April to December. The same spirit that made possible the Culebra Cut and the great locks has prevailed on this work. The men pushing ahead overcame the many difficulties, till at the present time it is practically completed.

It is hard to imagine that this vast territory, now healthy, dry, and clean of dense tropical trees and vegetation, was a few years ago an almost impenetrable jungle, the lurking place of yellow fever and malaria. Many thousand French and American laborers fell victims to fever when working on this section, and were buried in a cemetery so close to here the canal now runs that the white stones marking the graves can be plainly seen from the canal. These gravestones stand as a constant reminder of the tremendous human sacrifice made, in order that the world might some day benefit by the waterway across the Isthmus of Panama.

Every day a different human interest story will appear in The Times. You can get a beautiful intaglio reproduction of this picture, with five others, equally attractive, 7 by 9 1/2 inches in size, with this week's "Mentor." In "The Mentor" a well known authority covers the subject of the pictures and stories of the week. Readers of The Times and "The Mentor" will know Art, Literature, History, Science, and Travel, and own exquisite pictures. On sale at The Times office. Price ten cents. Write today to The Times for booklet explaining The Associated Newspaper School plan.

EAGLES HOLD BIG CARNIVAL

Order Starts Three-Day Celebration in California Town.

(Special to The Times.) MELROSE, Cal., May 28.—The Eagles' three day carnival opened today with a large attendance. The all nation's parade was a distinct and unique feature. Mayor Frank K. Mott, of Oakland, assisted in the coronation of Queen Bertha.

NEWPORT WOMEN WORK

Proceeds of Dinner to Pay for City Improvement.

NEWPORT, Or., May 27.—To brighten up the bulkheading along the city's property on the waterfront with a new coat of whitewash, is the purpose for which the proceeds of a dinner that was served by women here recently will be used.

A lively interest in the "city beautiful" project has been manifested during the past year by the various social and industrial organizations and by individuals.

Several weeks ago the Mayor designated a day on which he asked that a general cleanup be made, and the response was general and thorough.

NEW BOAT LINES.

Grand Trunk Pacific Will Operate Ships to S. F. and Orient.

Try The Times' Want Ads.

REALTY MEN HIT BLUE SKY LAW

California Real Estate Men Opposed to New Restrictions.

(Special to The Times.) LOS ANGELES, May 27.—The California Association of Investment Corporations, at its noon meeting today, decided to invoke the referendum against the "blue sky" law passed at the last session of the legislature and to initiate "a just and practical measure." J. T. McBean, secretary, issued a statement following the meeting, in which he said the association had always contended and advocated protection for the people, but the new measure harrasses legitimate development and retards progress.

OPEN NEW PROJECT.

Northern Pacific Will Build Line From Hesper to Mellville, Mont.

MELLVILLE, Mont., May 27.—To open up the rich lake basin country, containing an area of 300,000 acres of fertile farm land, including the 73,000-acre Thompson ranch recently purchased by Wisconsin capitalists for subdivision, the Northern Pacific road is preparing to build a branch from Hesper to this place, most of the grading work will be completed this year.

TO AID ALASKA.

Seattle Men Send Pictorial Information About Country to Wilson.

WASHINGTON, May 27.—President Wilson today received from the Seattle Chamber of Commerce an album of pictorial information about Alaska, containing 100 photographs and 28 maps. Every source of wealth and commercial activity is described in the volume, especial attention having been given transportation facilities. The album was forwarded for executive information pending the consideration of railroad legislation for the territory.

OAKLAND BANKS MERGE.

OAKLAND, Cal., May 27.—The Telegraph Avenue Savings Bank went out of existence today, having been absorbed by the Central Savings Bank.

Have your job printing done at The Times office.

UNIVERSITY OF OREGON

Summer School June 23 August 1, 1913

TWENTY-FIVE INSTRUCTORS — — — FIFTY COURSES

DISTINGUISHED EASTERN EDUCATORS ADDED TO REGULAR FACULTY

University Dormitories open. Board and room at \$2.50 per week. Reduced Railroad Rates

For complete illustrated catalogue, address The Registrar, University of Oregon, Eugene

C. A. Smith Lumber & Mfg. Co.

RETAIL DEPARTMENT

LUMBER, LATH, SHINGLES, MOULDINGS, SASH AND DOORS, ROOFING PAPER, ETC.

CUT THE FUEL BILL IN TWO BY USING OUR WOOD.

PHONE 190. 182 SOUTH BROADWAY

FIRST NATIONAL BANK OF COOS BAY

Choosing a Bank

Is a matter that should call for careful consideration. The features which should be vitally considered are:

- The financial strength of the bank.
- The condition of its assets.
- The conservatism of its policies.
- The integrity of its directorate.
- The facilities it offers patrons and the intelligent courtesy of its officers and assistants.

It is our aim to excel and we invite you to put us to the test in all these essentials.

FLANAGAN & BENNETT BANK

OLDEST BANK IN COOS COUNTY.

Established 1889.

Capital, Surplus and Undivided Profits \$110,000

Interest paid on Time Deposits.

Officers:

- J. W. Bennett, President.
- J. H. Flanagan, Vice-President.
- R. F. Williams, Cashier.
- Geo. F. Winchester, Ass't Cashier.

BANDON BY THE SEA

THE CITY OF THE FUTURE

A FEW TEN ACRE TRACTS FOUR MILES SOUTH ON COUNTY ROAD \$35 PER ACRE; \$100 CASH, BALANCE TWO YEARS, NO INTEREST, NO TAXES, FINE SANDY LOAM, LEVEL BENCH LAND.

Buy One—It Will Make You Money

Donald MacKintosh

REAL ESTATE and INSURANCE.

Abstracts, Real Estate, Fire and Marine Insurance

Title Guarantee and Abstract Co.

HENRY SENGSTACKEN, Mgr.

Coquille Office Phone 191—Platting Lands a specialty.

Farms—Timber—Coal and Marshfield Office 14-J.

General Agents "EASTSIDE."

THE RECORD PHOTOGRAPHING ABSTRACT COMPANY—

Have photographic copies of all records of Coos County to date, abstracts of titles, present owners, or any other information relating to real estate furnished on short notice.

BUSINESS OFFICE: 117 North Front St., Marshfield. Phone 1514

W. J. RUST, Manager

FAMILY DINNERS

In our new location, we are especially prepared to cater to family trade. Regular meals or short orders.

Open day and night.

MERCHANT'S CAFE.

Broadway and Commercial Mfd.

COOS BAY PLATE AND WINDOW GLASS CO.

J. A. Goodwill and W. E. Sawyer, Proprietors.

Plate, Art and Window Glass, Mirrors, Prismatic Glass.

Mail orders and phone orders given prompt attention. Estimates furnished.

Phone 70-L.

727 So. Broadway. Marshfield.

Just Received

another shipment of the Famous

Mysost and Primost Cheese

Stauff Grocery Co.

Phone 102

FOR QUICK WORK, FOR PROMPT WORK, FOR GOOD WORK,

Telephone the old reliable

Coos Bay Steam Laundry

We always deliver the goods.

Phone 57-J ——— Marshfield

Marshfield & North Bend Auto Line

Cars leave every 20 minutes from 7 a. m. to 7 p. m.; from 7 p. m. to 12 o'clock every half. Fare 15 cents one way, round trip 25 cents. Commutation books, 20 rides, \$2.00. Cars leave Chandler Hotel, Marshfield and North Bend News Co., in North Bend.

GORST & KING, Props.

JUST RECEIVED

A large shipment of Electric Cut Glass Shades.

Call and see our stock of glassware. We also have some of the latest designs in shower fixtures, from two light to five. Everything in electrical supplies.

Barnard & Langworthy

Aug. Frizeen

REAL ESTATE AND INSURANCE.

Some bargains in city and Bunker Hill lots and residences.

Union Storage Company

W. A. Heard, Mgr.

Expert Packers. Carpets Cleaned. Furniture Packed, Shipped, Stained and Repaired.

382 Front St. Phone 196.

Leave orders at Going & Harvey.

Ride in Lynn Lambeth's 1913 7-passenger Cadillac. Stand at Hillier's Cigar Store. Telephone 18-J. After 11 p. m., telephone 260-L, the Right Cafe. Careful driving assured. Prompt attention. Will go anywhere, any time, day or night. Leaves Hillier's Cigar Store to meet all trains and boats.

City Auto Service

Good Cars, Careful Drivers and reasonable charges. Our motto: "Will go anywhere at any time."

Stands—Blanco Hotel and Blanco Cigar Store. Day Phones—78 and 48. Night Phone 46.

HARPER & GOODALE, proprietors.

Pictures & Framing

Walker Studio

Baby Shoes!

See the new line of Baby Shoes at the

The Electric Shoe Shop

at 180 South Broadway.

Unique Pantatorium

THE MODERN DYERS, CLEANERS, PRESSERS and HAT RENOVATORS

Agent for Edward H. Strauss & Co., Fine Tailoring. Let us make your next suit.

255 CENTRAL. Phone 250-X

Bowling Alley!

375 NORTH FRONT STREET

Tuesday Evening Especially for Ladies

W. S. BROWN & A. H. HODGINS

Marshfield Paint & Decorating Co.

Estimates Furnished.

Phone 187-L. Marshfield, Ore.

\$5 REWARD for any watch I cannot make run.

E. C. BARKER

JEWELER

Fine Watch and Jewelry Repairing.

266 Front St., Marshfield.

ER TRADE
TILL HEAVY

Supplies Bulk of
San Francisco Market—
Somewhat Better

continues to supply a
the lumber for the
co market, being far
other points in ship-
at trade. The demand
backing up along the
the price has stumped
ased output and price
ame of the jobbers and
on are given as some
s for the poorer mar-
great building activity
place in consequence of
Exposition and heavy
Los Angeles and San
expected that the mar-
pick up. The Pio-
Lumberman, of San
ves the following fig-
shipment of lumber to
from the various coast
g the first two weeks

and Spruce.	3,195,000
.....	1,575,000
.....	2,148,000
.....	2,455,000
.....	400,000
.....	10,655,000
.....	1,600,000
.....	475,000
.....	916,000
.....	1,256,000
.....	825,000
.....	1,250,000
.....	2,650,000
.....	29,398,000
Redwood.	9,175,000
.....	599,000
.....	290,000
.....	1,450,000
.....	696,000
.....	1,240,000
.....	1,874,000
.....	334,000
.....	15,658,000

ARE NUISANCE.

in Sacramento Discover
Getting Rid of Them.

al to The Times.)
LE, Cal., May 27.—Of-
hout the upper part of
to Valley are perplex-
duct of Hindus, who
of appearing at falls
poverty as an excuse
ng a night's lodging,
y have been refused,
admit one meant admit-
or fifty, for all who
past been accommodated
lately spread the glad
free lodging is to be
asking. The chief of
has apparently solved
Moder Singh demand-
the night and when re-
ed in front of the en-
declined to leave. He
up on a charge of dis-
eace and grinned ex-
having at last found
morning he was fined
alternative of paying
ten days on the chain
ut a friend to an adja-
or \$150 he had on de-
d for his night's sleep;
all the peered towns
similar programs.

LD BIG DOCKS.

and San Pedro Line
4,000,000 at San Pedro
al to The Times.)
E CITY, May 27.—An-
s made here today that
ific and San Pedro, Los
Salt Lake systems will
at San Pedro convert-
front holdings of the
the most comprehensive
cks on the coast in the
entral Pacific system is
former road.

OF MEMBERSHIP

Report Before North-
Presbyterians.

GA., May 27.—An ar-
the "tendencies of the
contained in the report;
on narrative pre-
the Northern Presby-
ably. The report de-
stressing loss of mem-
many synods of the

0 churches during the
tical year failed to se-
member through confes-
according to the re-

ures brought out were
of the most intelligent
ial church members
bath on the golf links
tending divine wor-
extent and boldness
slave traffic has be-
ng, even extending, the
ed into Sabbath schools
Endeavor Societies,
stated that a total of
members through con-
th were enrolled dur-
year by the church.

am for Portland.

D, Or., May 27.—Plans
of public auditorium to
being prepared by Eu-
n, a New York archi-
be submitted within
days.

ACORICE MONEY.

of King of Traffic
orce at Reno, Nev.

ay 27.—Mrs. George
e, wife of a New York
grandson of George
"licious king," from
eried an immense for-
re a divorce in the
Mrs. Banchie's break
and comes as a great
they have been coun-
ually matched pair.