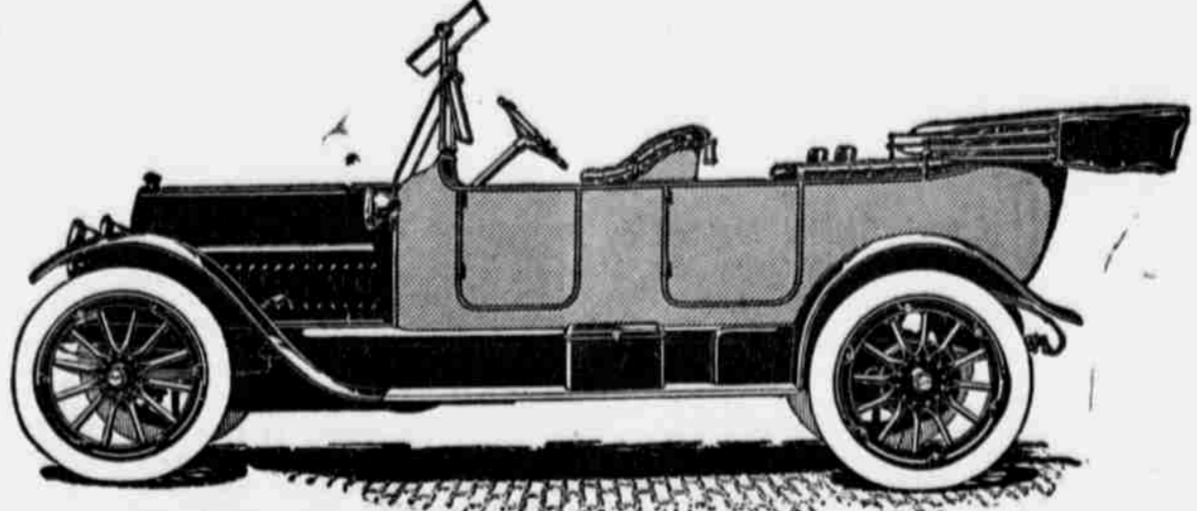


Studebaker

AUTOMOBILES

The Six Passenger Car Enters the Low Price Zone



STUDEBAKER "SIX"

Six Cylinder, 3 1/2 inch bore x 5-inch stroke, 121-inch wheelbase.

With

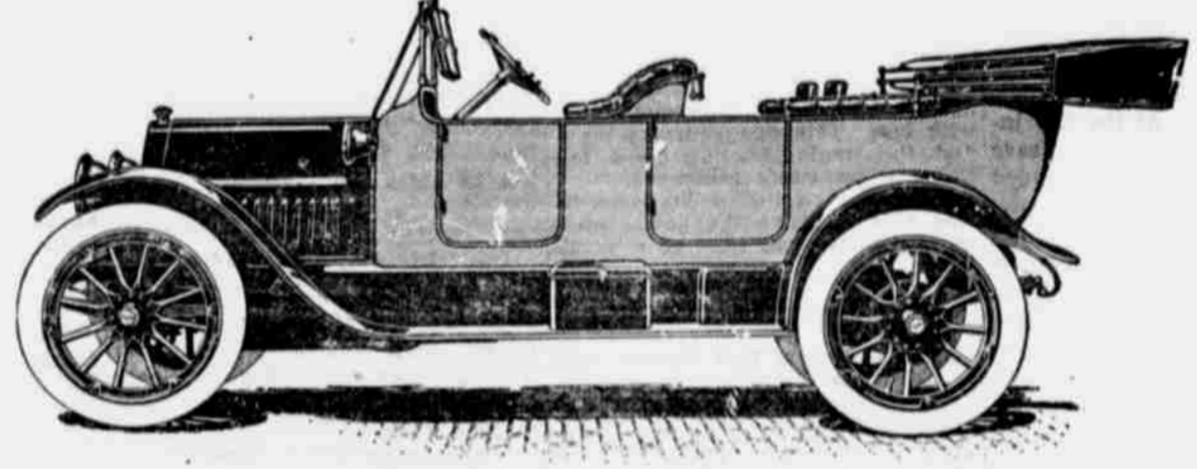
Electric self-starter.
Electric lights.
Electric horn.
Studebaker Jiffy Curtains.

Six-passenger body.
34x4-inch Goodrich Tires.
Luxurious upholstery.
Crowned fenders.

Silk mohair top.
Clear-vision windshield.
Speedometer.
Extra rim.
Full floating rear axle.

Detachable, demountable rims
Full set of Tools.
Tire holders.
Three-quarter elliptic spring.

\$1550
F. O. B. Factory



STUDEBAKER "35"

Four Cylinders, 4 1-8-inch bore x 5-inch stroke, 116-inch wheelbase.

With

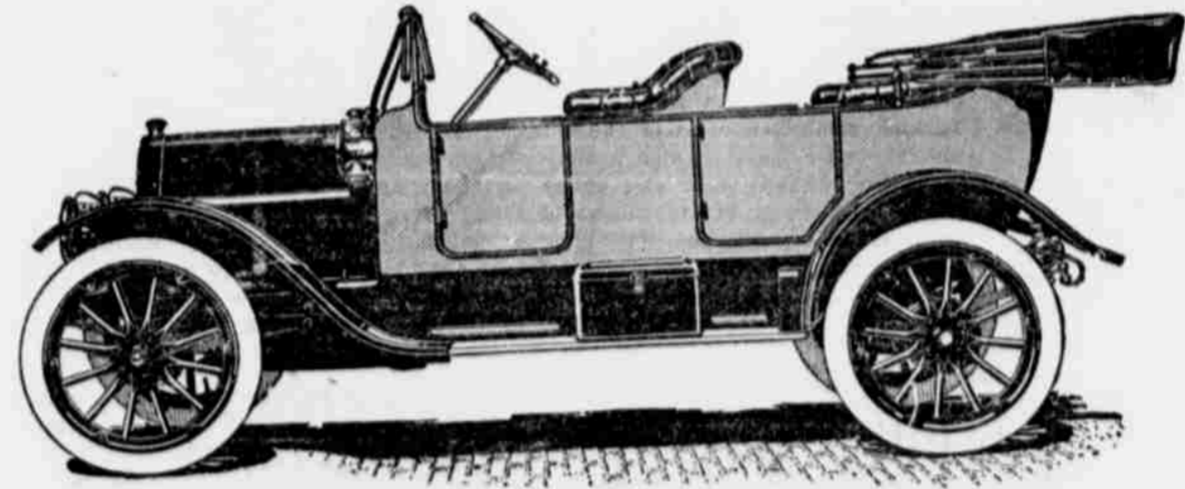
Six-passenger body.
34x4-inch Goodrich Tires.
Luxurious upholstery.
Studebaker Jiffy Curtains.
Electric horn.

Electric lights.
Electric self-starter.
Wide Tool Box.
Crowned fenders.
Silk mohair top.

Clear-vision windshield.
Speedometer.
Extra rim.
Three-quarter elliptic springs.
Full floating rear axle.

Tire holders.
Full Set of Tools.
Detachable, demountable rims.

\$1290
F. O. B. Factory



STUDEBAKER "25"

Five-passenger, Four Cylinders, Long stroke, 3 1-2-inch bore x 5-inch stroke, 102-inch wheelbase

With

30x3 1-2-inch Goodrich Tires.
Demountable rims.
Acetylene gas primer.
Studebaker Jiffy Curtains.

Electric horn.
Prest-O-Lite tank.
Silk Mohair Top.
Extra rim.

Ventilating windshield.
Speedometer.
Roze rail.
Tire holders.

Full set of Tools.
Tire repair kit.
Tool box.
Full elliptic springs.

\$885
F. O. B. Factory

The Studebaker "Six" and "35" Are Electrically Started and Lighted

When we vouch for the Wagner Electric Starter will you stop, please, to consider that the assurance comes to you from Studebaker?

We believe that this is by far the most satisfactory starter yet produced.

It is capable of giving the motor 80 revolutions per minute for 31 minutes.

It works—perfectly.

THERE ARE TOO MANY IMPROVEMENTS AND UP-TO-DATE FEATURES ON THESE CARS TO MENTION IN DETAIL IN THIS ADVERTISEMENT. CALL AND LET ME EXPLAIN THEM TO YOU.

How The "Six" and "35" Come by Their Beauty and Value

To some who have a favorite car of higher price there will be almost a sense of disappointment in the fact that this the "Six" and "35" have usurped the prerogatives of other cars.

If you are still trying to explain to yourself the phenomenon of so much beauty and satisfaction at so low a price—think of the purchasing power involved in a sales total of \$65,000,000.

Consider the expert engineering research and the development of special skill.

The thousand and one extra economies and efficiencies encouraged in a volume which exceeds in value the entire annual gold production of the United States and Alaska.

All these are exemplified in the "Six" and "35."

Chief Characteristics of the Studebaker "Six" and "35"

They are six-passenger cars. The two extra seats are of the turn-about disappearing type.

The front and rear seats are wide and deep; rich and restful.

There is no cramping nor crowding. The cars are electrically lighted.

They are equipped with an electric self-starter which we consider the most perfect yet devised.

The cars are provided with Studebaker Jiffy Curtains; the improvements are our own.

ISAAC R. TOWER

STUDEBAKER and BUICK REPRESENTATIVE

THE GUNNERY