

At the Churches

(Ministers and others are requested to hand in the Sunday church notices not later than Friday evening to insure insertion Saturday.)

METHODIST EPISCOPAL

Rev. H. I. Rutledge, Pastor.
Sunday school at 10 a. m.
Morning services at 11 o'clock.
Epworth League at 6:30.
Evening service at 7:30.
Junior League Thursday afternoon at 8:45.
Prayer meeting Thursday evening at 7:30 o'clock.
You are cordially invited to attend these services.

EMMANUEL EPISCOPAL

Rev. Robt. E. Browning, Rector.
8 a. m. Holy Communion (2nd and 4th Sundays.)
9:30 a. m., Sunday school.
11 a. m., morning prayer and sermon. Holy Communion first Sunday of each month.
7:30 p. m. Evening prayer and Sermon.

Friday Evening

7:30 p. m. Evening Service and Bible study.
Service in St. Mary's church, North Bend (2 p. m.) and St. Luke's Church, Empire, (3 p. m.) every alternate Sunday.
There will be special service in the Episcopal church tomorrow at 7:30 o'clock as planned for by the Women's Auxiliary. The members and friends of the church are earnestly urged to be present.

SEVENTH DAY ADVENTISTS

C. J. Cole, Pastor.
Seventh Day Adventist services are conducted every Saturday as follows:
Sabbath school at 2 p. m.
Preaching services at 3 p. m.
Come and spend an hour with us; we will do you good.

CHURCH OF CHRIST

Z. O. Doward, Minister.
Bible school at 10 a. m.
Young People's meeting at 7 p. m.
At the Christian church, corner of Sixth street and Central avenue, Rev. Doward will speak tomorrow morning on "The Hero of the Future." In the evening he will deliver the second discourse of the series on "Fundamental Things." There will be special music by the Male Quartet.

PRESBYTERIAN CHURCH

Marshfield
J. E. Burkhardt, Minister.
At the First Presbyterian church services may be expected on sabbath as follows:
Sunday school at 10 a. m.
Morning worship at 11 o'clock.
Young People's Meeting at 6:30.
Prayer meeting on Thursday evening at 7:30 o'clock.
Special music will be rendered by a quartet choir at both morning and evening worship. You are cordially invited to attend all of these services. Come and bring friends.
Evening worship at 7:30 o'clock.
Subject of the morning sermon: "How Old Are You?" Subject of the evening sermon: "Why I Am Not An Infidel." This will be the first in a series of Sunday evening sermons. They will be of special interest to everyone. Be sure to hear them.

SWEDISH LUTHERAN

Dr. John E. Oslund, Pastor.
Sunday School, 9:30 a. m.
Morning service, 10:45 a. m.
No evening service.
We extend a cordial invitation to the public to worship with us.

UNITED BRETHREN CHURCH

North Bend.
Mrs. R. N. Lewis, Pastor.
Sabbath school, 10 a. m.
Christian Endeavor, 7 p. m.
Preaching 11 a. m. and 8 p. m.
Prayer meeting Wednesday evening at 8 o'clock.

NORWEGIAN LUTHERAN

R. O. Thorpe, Pastor.
Services will be held at the Norwegian Lutheran Church at Marshfield, Sunday, Nov. 10 at 11 a. m., at which time the Holy Communion will be observed. Sunday school at 10.
Norwegian preaching services will be held in the Swedish Lutheran church in North Bend, Sunday, Nov. 10, at 7:30 p. m. Sunday school at 10 a. m.

Twinges of rheumatism, backache, stiff joints, and shooting pains all show your kidneys are not working right. Urinary irregularities, loss of sleep, nervousness, weak back and sore kidneys tell the need of a good reliable kidney medicine. Foley's Kidney Pills are tonic, strengthening and restorative. They build up the kidneys and regulate their action. They will give you quick relief and contain no habit forming drugs. Safe and always sure. Try them. For sale by Lockhart-Parsons Drug Co., the Bee Corner.

CHRISTIAN SCIENCE

Christian Science hall, 237 Third street North.
Subject: "Adam and Fallen Man."
Service Sunday at 11 a. m.
Sunday school 12 M., Wednesday 8 p. m.
Reading room open on Tuesdays, Thursdays and Saturdays, 3 to 5 p. m.

FIRST BAPTIST CHURCH

Albert F. Bassford, M. A., Pastor.
Bible school meets at 10. We have classes for all ages.
Morning worship at 11. Sermon topic: "The Vision that Transforms." Young People's Service at 6:30. All young people welcome.
Evening worship at 7:30. Sermon topic: "Prophets of Yesterday and Today."
Midweek prayer and conference meeting Thursday evening at 7:30.
Juniors meet on Friday at 4 p. m. We extend a hearty invitation to the general public to share the benefits of our services with us. Come thou with us and we will do you good.

CATHOLIC CHURCH

North Bend.
Rev. Father Springer, Rector.
Mass will be celebrated at 8 o'clock Sunday morning by the Rev. Father Springer.

CATHOLIC CHURCH

Marshfield.
Rev. A. R. Munro.
Low Mass will be celebrated at 7 a. m. and High Mass at 10 a. m. Sunday.

PRESBYTERIAN CHURCH

North Bend.
Rev. D. A. MacLeod, Pastor.
Sunday school, 10 a. m.
Preaching service, 11 a. m.
Christian Endeavor, 6:30 p. m.
Preaching service, 7:30 p. m.

METHODIST CHURCH

North Bend.
The services Sunday will be as follows:
Sunday school 10 a. m.
Vesper Circle and Epworth League 7 p. m.
Sermons by the pastor 11 a. m. and 8 p. m.

SPECIAL CANDY SALE STAFFORD'S Saturday and Sunday CARAMELS 35c per pound.

The PORTLAND DAILY EVENING TELEGRAM by Mail entire year of 1913 for \$3.50 and balance of this year FREE. Hand your name to NORTON & HANSEN.

Libby COAL. The kind YOU have ALWAYS USED. Phone 72, Pacific Livery and Transfer Company.

PILES CURED AT HOME BY NEW ABSORPTION METHOD.

If you suffer from bleeding, itching, blind or protruding Piles, send me your address, and I will tell you how to cure yourself at home by the new absorption treatment; and will also send some of this home treatment free for trial, with references from your own locality if requested. Immediate relief and permanent cure assured. Send no money, but tell others of this offer. Write today to Mrs. M. Summers, Box P, Notre Dame, Ind.

Keep From Fear and Worry

by protecting your home, household goods and clothing from destruction and loss by getting a policy in The Newark Fire Insurance Co., one of the oldest and strongest companies in existence; established in 1811, its superb strength means superb protection.
Surplus to policyholders, \$1,359,881.30.

French Realty Co.

AGENTS.
315 1/2 No. Front St., Marshfield

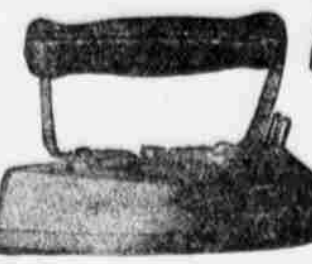
I Will Furnish Your House on the Installment Plan

W. K. Wiseman
341 North Front St.
Bus. Phone 296-X; Res. Phone 166-J

For GOOD SHOES

and GOOD REPAIRING at RIGHT PRICES.
Go to
August Oleson
215 South Broadway.
VOTE FOR

Anybody can attach the plug



The G.E. Flatiron then heats itself in about three minutes and will stay hot without further attention.

Saves time, steps and fuel

If the washing and ironing are sent out, the G.E. Electric Iron will still be found a marvelously convenient utensil to have in the house. There are many little things women like to iron themselves, and many times it becomes necessary to wash and iron a few handkerchiefs, etc., before the "wash" comes home. When occasions like these arise, and there is a G.E. Iron handy, it is the work of but a moment to attach the cord to a lamp socket—and the iron is ready. Get one today.

OREGON POWER CO.
TELEPHONE 178.

COOS BAY, OREGON

YOU WILL RECEIVE A CLEAN, SAFE AND SQUARE DEAL

COOS BAY REALTY SYNDICATE. DEALERS AND AGENTS COAL COLONIZATION, DAIRY, FARM FRUIT, MINERAL and TIMBER LANDS.

ORGANIZING OF INDUSTRIAL COMPANIES A SPECIALTY

The past has proven that investments in small acre tracts near growing cities are the most profitable. The C. B. R. S. has such to offer. Chas. J. Brusckie, Marshfield, Ore.



The Quality of Our Bread

can only be properly appreciated by the test of taste. Order us to send you a loaf or two every morning fresh from our ovens. After you have tried it awhile you'll have acquired such a liking for it that you'll want it always.

Coos Bay Bakery
The place for good goodies.
Market Ave. Phone 111-L

Get Busy

AND GET AFTER THAT ROOF, BUT FIRST COME IN AND GET OUR PRICES ON SHINGLES AND ROOFING PAPER. SHINGLES \$1.50 AND UP.

ROOFING PAPER, ONE PLY, \$1.25 AND UP.
C. A. Smith Lumber & Mfg. Co.
RETAIL DEPARTMENT.

WANTED!!!

CARPETS UPHOLSTERING AND PIANOS TO CLEAN, by the Pneumatic Cleaning Company. Orders for work taken at
GOING & HARVEY, Phone 196

Pictures & Framing Walker Studio

BUILDING AND REPAIR WORK, House Moving and Grading.
We are prepared to do this work by the day or contract and guarantee satisfaction. Let us figure with you.
G. S. FLOYD & CO., Phone 316-J, Marshfield, Ore.

Have That Roof Fixed NOW
See CORTELL
PHONE 3121.

WE WILL MAIL YOU \$1 for each set of old False Teet sent us. Highest prices paid for old Gold, Silver, old Watches, broken Jewelry and Precious Stones.
Money Sent by Return Mail.
Phila. Smelting & Refining Co. Established 20 Years.
803 Chestnut St., Philadelphia, Pa. TO DENTISTS.
We will buy your Gold Fillings, Gold Scrap, and Platinum. Highest prices paid.

PROFESSIONAL DIRECTORY

- LIVIA EDMAN, Mechano-Therapist Scientific Swedish Massage, Medical Gymnastics 325 S. Sixth St. Phone 295-R.
- JOEL OSTLIND, Piano Tuner and Repairer. 415 S. Sixth Street. Phone 103-L.
- EDNA LOUISE LARSON, Pianist and Teacher. Phone 254-R.
- J. W. BENNETT, Bennett Swanton, Tom T. Bennett Attorneys and Counselors at Law. Flanagan & Bennett Bank Building. Marshfield, Coos Co., Oregon.
- PERL RILEY BALLINGER, Pianist and Teacher Residence-Studio, 237 So. Broadway Phone 18-L.
- LEW KEYZER, Violin Instructor. Apply Haines Music Store. Class Starts September 1.
- W.M. S. TURPEN, ARCHITECT. Marshfield, Oregon.
- DR. W. MORROW, Dentist. 171 Grimes Building, over Grand Theater. Office Phone 330.
- W. G. CHANDLER, Architect. Rooms 301 and 302, Coke Building Marshfield, Oregon.
- DR. A. J. HENDRY'S Modern Dental Parlors. We are equipped to do high class work on short notice at the very lowest prices. Examination free. Lady attendant. Coke Bldg., Opp. Chandler Hotel, phone 112-J.

See California Now

VIA THE



\$55.00

ROUND TRIP
PORTLAND TO
LOS ANGELES

\$55.00

ROUND TRIP
PORTLAND TO
LOS ANGELES

See the Wonderful Scenery Along the Shasta Route. Mt. Shasta—Shasta Springs. See San Francisco, Lick Observatory, Stanford University, Mt. Lowe, Los Angeles, The Old Spanish Missions, Ostrich Farms, Submarine Gardens and thousands of other interesting features of the Golden State.

Three Fine Trains Daily

5:50 P. M.—8:15 P. M.—1:30 A. M.

Full information as to fares from Marshfield, beautifully illustrated literature on California, on application to W. F. Miller, Supt. C. B., R. & E., Marshfield, or by writing to Chas. S. Fee, passenger traffic manager, San Francisco, Cal.

Parties Desiring Monuments Erected

PACIFIC MONUMENTAL WORKS

South Broadway and make selection from the large stock now on hand. Mr. Wilson has in his employ the only practical marble and granite cutter in Coos County. And none but the best work is turned out.

STATEMENT OF CONDITION of FLANAGAN & BENNETT BANK

At the close of business, September 4, 1912.

RESOURCES.	
Loans and discounts	\$465,221.87
Banking house	50,000.00
Cash and exchanges	307,933.48
Total	\$823,155.35
LIABILITIES.	
Capital stock paid in	\$50,000.00
Surplus and undivided profits	59,533.87
Deposits	713,621.48
Total	\$823,155.35

CONDENSED STATEMENT Of The First National Bank of Coos Bay

At the close of business, September 4, 1912.

RESOURCES.	
Loans and Discounts	\$308,414.77
Overdrafts	162.12
Bonds, warrants and securities	63,683.88
U. S. Bonds to secure circulation	25,000.00
Real estate, furniture and fixtures	50,000.00
Cash and sight exchange	149,368.00
Total	\$696,528.77
LIABILITIES.	
Capital stock paid in	\$100,000.00
Surplus and undivided profits	11,422.22
Circulation, outstanding	24,000.00
Deposits	488,006.55
Total	\$623,428.77

In addition to Capital Stock the individual liability of Stockholders \$100,000.00.

INTEREST PAID ON TIME AND SAVINGS DEPOSITS.

W. S. CHANDLER, President DORSEY KREITZER, Cashier

Abstracts, Real Estate, Fire and Marine Insurance

Title Guarantee and Abstract Co.
HENRY SENGSTACKEN, Mgr.
Coquille Office Phone 191 — Platting Lands a specialty.
Farms — Timber — Coal and other "EASTSIDE"
General Ag Marshfield Office 14-J.

Barnard & Langworthy See our window display of WOOD ELECTRIC FIXTURES LEADED ART GLASS DOMES PORTABLE STAND LAMPS. PHONE—184-R.

R. J. MONTGOMERY Real Estate and Insurance 244 North Front Street.

Olympic Flour
Snow Drift Flour

RETAIL PRICE \$1.40 PER SACK

Northwestern hard wheat used exclusively in milling these brands of flour.