

COOS BAY TIMES

An Independent Republican newspaper published every evening except Sunday, and Weekly by The Coos Bay Times Publishing Co.

Entered at the postoffice at Marshfield, Oregon, for transmission through the mails as second class mail matter.

M. C. MALONEY Editor and Pub. DAN E. MALONEY News Editor

SUBSCRIPTION RATES.
In Advance.
DAILY.
One year \$5.00
Six months \$2.50
Less than 6 months, per month .50
WEEKLY.
One year \$1.50

Address all communications to **COOS BAY DAILY TIMES,** Marshfield : : : : Oregon

The policy of the Coos Bay Times will be Republican in politics, with the independence of which President Roosevelt is the leading exponent.

Official Paper of Coos County.

SIGNS OF PROSPERITY.

THE NORTH BEND BOX FACTORY will open today with a full force and will be operated to the limit of its capacity indefinitely, the C. A. Smith Mill expects to replace its night shift sometime next month; in the want columns of this evening's Times there is an advertisement for 50 laborers at \$2.50 per day and a full summer's work promised. These are all important indications of the return of prosperity to this section. Present prospects are that the coming year will be one of the best that this section has known. With plenty of work, plenty of business and the boosting spirit in the air that proposed railway will become a reality.

THE CRIME OF THE PEOPLE.

A ST. PAUL DISPATCH says: "Managers of local flour mills say the price of flour is too low. The mills cannot make flour for \$7 on the present price of wheat. They predict that the price will go to \$10 a barrel."

A New York dispatch: "Bakers have curtailed the size of bread loaves. They have kept the news from the public as long as possible on account of the excitable temperament of the East Side."

Under the headline, "James A. Patten Says Speculation is a Great Game," is a Chicago news item telling how the so-called "wheat king," chewed a stub of a cigar and bought three million bushels of wheat which did not exist to prevent the price from receding to its normal level.

A Washington special says that the secretary of agriculture declares the wheat supply to be sufficient for the world's needs, and that when Mr. Patten says "the situation is speculative, he doesn't know what he is talking about."

There is much food for thought in these four expressive chronicles of different phases of the present "corner in wheat." James A. Patten through speculative activity has placed an extraordinary and unjustifiable value on a staple article which is later converted into a necessity. The law of values has decreed that the product from wheat shall advance in proportion with the rise in price of this most necessary component.

A series of profits in the evolution of wheat into bread must be preserved regardless of the cost to the consumer. The labor which enters into the various stages of the manufacturing process must be recompensed. Its service does not decrease in value, to maintain a level of the cost of production, as the value of articles comprising the finished product advance.

It is pertinent to ask, therefore, what power is vested in James A. Patten that he can at will impose a tax upon the world's most staple article of food, a tax that must be paid by the man who sold "short," a tax upon millers forced to buy wheat regardless of cost, and a tax upon the baker needing flour for his bread?

By what authority does J. A. Patten curtail the purchasing power of the people, the consumers, upon whom finally is thrust the inglorious burden of the combined taxes of the man who went "short," the manufacturer and the baker? The answer in the ultimate under our system of government must be, "by the authority given him by the people." Speculation produces nothing, it creates no wealth, nor does it give birth to capital. It does not remodel what it wrecks, nor does it rebuild

LEAGUES HOLD ANNUAL SESSION

Coos County Epworth League Association's Meeting at Bandon Ends.

BANDON, Ore., April 28.—The Fourth Annual meeting of the Coos District Epworth League Association was opened with a reception in the Oriental hall Bandon, on Friday evening, April 23, 1908. After a good program and the usual addresses of welcome and response the visiting delegates were treated to refreshments and entertained in royal style.

Saturday morning the real work of the convention began at 8:30 a. m., with District President A. J. Drews in the chair, after appointing various committees the papers which had been assigned to the different leagues, were then taken up and discussed the delegates taking very active part in all the discussions.

In the afternoon the reports were read from various leagues of the district and it was found that the total number of leaguers were nearly 180, Myrtle Point not having any league at present. The entire amount of money raised by the combined leagues was nearly \$250 for different enterprises of the church.

By unanimous vote the next convention is to be held at Gardiner, Ore., Rev. Ray H. Pierson of Myrtle Point, was elected delegate to the National Convention to be held in Seattle in July with Rev. H. I. Rutledge of Marshfield as alternate.

Officers for the ensuing year are: President—A. J. Drews,

First vice-president—C. M. Goodman,

Second vice-president—Nettie Snyder,

Third vice-president—Elizabeth Davenport,

Fourth vice-president—Chas. Leomis,

Corresponding secretary—Mrs. Edith Zabriskie,

Recording secretary—F. L. Sumner.

Among the side attractions which were enjoyed very much by the visiting delegates were a trip on the beach on Friday afternoon and a bonfire on the beach at the Lookout Station on Saturday where some of the young men proved their ability as cooks, and coffee makers.

Every one was pleased with the new steamer "Coquille," and with the courteous treatment accorded them by the officers of the steamer.

Sunday evening the convention adjourned and many were the expressions of regret made by the visitors that their stay had to be so short.

PLAN SUMMER RACE MEET FOR MARSHFIELD

F. P. Norton and Other Local Turfmen Figure On Event For July 4—Horses Here For Training

F. P. Norton, G. W. Carleton and other local lovers of the turf are figuring on racing program to be pulled off here the latter part of June or early in July. While the date has not been definitely fixed, it is likely that July 4 will be chosen. It is also likely that the event will be confined to one day.

Yesterday Zomoak and Belle N, two of Mr Norton's harness horses which he has had in California during the winter months, arrived on the M. F. Plant and will be trained on the local grounds by Dan Starr who trained for Mr. Norton last season.

Belle N and Zomoak have been in training at Pleasanton, Cal., for the past six months under Mr. Starr and are in fine condition. Belle N has a mark of 2:38 while Zomoak is a green horse. They are fine pair and will undoubtedly make a good showing this season. Mr. Norton plans to take them over to the Willamette Valley late in the summer and make the Northern Pacific circuit with them.

There are several other horses on the grounds now, Owens Brothers of California, having one filly and Mr. Foster a couple of harness horses. A number of other horses will probably be brought here soon for training.

What it destroys, its remedy is in the hands of the people. In time the people must find it and use it, cautious only to find that which is in fact a remedy and not the creator of a greater evil.

METAL BEDSTEADS

There is Real Beauty in the kind of Metal Bedsteads WE SELL

Our Lines, and we carry five different lines of Metal Bedsteads, are different, entirely different, from all other kinds. In so much as they are Handsomer, the styles are different and the Finish is Superior.

AND THINK OF IT

Our prices are actually lower

THESE BEDSTEADS ARE RIGHT ON OUR EXHIBITION FLOOR MARKED OUT IN PLAIN FIGURES. THE TIME TO GET THE BEST SELECTIONS IS NOW

Choice substantial well finished beds - \$3.00 to 6.00

Exceptionally choice styles and colors - \$7.00 to 10.00

The Bed Artistic, best styles in America - \$10.50 to 16.

White fringed bed spreads, cut corners - \$2.25 to 3.50

Colored bed spreads, cut corners - \$4.00 to 5.00

Lace Bed Sets with bolster rollers - \$6.50 to 7.50

Never anything but the best for the price asked
Never any price but the Lowest

Perry, Montgomery & COMPANY

OF THE FIRST CLASS

Go=Carts

A large new line of go-carts has just arrived at our store and you will do well to inspect them before you make a purchase.

We have also received a big assortment of

Mattings

of the very latest shades and designs. Call and see them and be the judge as to the quality and price.

C. A. JOHNSON

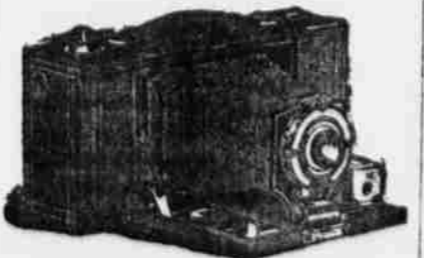
FURNITURE STORE,
NORTH FRONT STREET,
MARSHFIELD, OREGON

- NEW BERMUDA ONIONS
- CALIFORNIA ASPARAGUS
- PEAS
- LETTUCE
- CELERY
- TURNIPS
- NEW POTATOES
- CARROTS
- COOS RIVER RHUBARB

C. W. WOLCOTT
The Family Grocer
Phone 971

Free delivery to any part of the city.
Front Street Marshfield

KODAKS



All Sizes and supplies at the
RED CROSS

AERGRAM.

ROSEBURG, Ore., via "PD" April 22.—O. L. Hopson, Marshfield, Ore. Take official notice stock advances to thirty dollars per share on or before May first.

F. B. McCORD.

STEAMERS

Portland & Coos Bay S. S. Line

S. S. BREAKWATER

Sails from Ainsworth Dock Portland, Wednesdays at 8 p. m.
Sails from Coos Bay Saturdays at Service of Tide.

S. S. CZARINA

SAILING BETWEEN SAN FRANCISCO AND COOS BAY, CARRYING FREIGHT AND COMBUSTIBLES ONLY.

W. F. Miller, Agt. Phone Main 2331

CALIFORNIA AND OREGON COAST STEAMSHIP COMPANY.

Steamer Alance

E. D. PARSONS, Master.

EQUIPPED WITH WIRELESS

COOS BAY AND PORTLAND

SAILS FROM PORTLAND SATURDAYS, 8 P. M.
SAILS FROM COOS BAY TUESDAYS, AT SERVICE OF TIDE.

F. P. Baumgartner, Agt. H. W. Skinner, Agt.
Couch St. Dock, Portland, Ore. Marshfield, Ore., Phone 441

EAT RAISINS

APRIL 30th

California Raisin Day

This space belongs to the Steamer M. F. Plant.

Steamer Wilhelmina

LUDVIG CHRISTENSEN, Master.

Sailing for Bandon every Monday. For full information, apply Chas. Thom owner, or H. W. Skinner, agent.

Everything Back But the Dirt

Marshfield Hand & Steam Laundry

STEAMER FAVORITE

Two trips daily between Bandon and Coquille connecting with all Marshfield traffic.

Leaves Bandon . . . 6:45 a. m.

Leaves Bandon . . . 1:20 p. m.

Leaves Coquille . . . 9:15 a. m.

Leaves Coquille . . . 4:00 p. m.

Travelers leaving Marshfield in the morning reach Bandon at noon. People on Coquille river can spend over three hours in Marshfield and reach home the same day.

COQUILLE RIVER TRANSPORTATION CO.

HIGH GRADE MEATS

The odor of good roast beef however appetizing, can only be suggestive of the delicious taste and flavor that goes with every piece of meat we sell. All our meats are the choicest we can produce.

R. H. Noble—The CITY MARKET—Phone 1941
C and Front Streets, Marshfield Oregon

PROFESSIONAL CARDS.

D. J. W. INGRAM
Physician and Surgeon.
Office 208-209 Coos Building
Phones—Office 1621; Residence 1621

D. R. A. L. HOUSEWORTH
Physician and Surgeon
Offices second floor of Flanagan & Bennett Bank Building.
Office hours 7 to 4 p. m.; 7 to 8 p. m.
Phone: Office, 1431; Residence, 1431

D. R. E. GOLDEN
Physician and Surgeon
207-03 Coos Building.
Office hours: 10 to 12 m.
2 to 5 and 7 to 8 p. m.
Phones:
Office 1051 — Residence 165.

D. R. A. C. BURROUGHS
Homeopathic Physician
Chronic Diseases a Specialty.
Residence and Office, corner 'C' and Second Sts., Marshfield, Phone 1694

D. R. GEORGE W. LESLIE
Osteopathic Physician
Graduate of American School of Osteopathy, Kirksville, Mo.
Office hours:—9 a. m. to 4 p. m.
Other hours by appointment.
Office over First National Bank
Phone 1611. Marshfield, Ore.

LAWYERS

W. BENNETT,
Office over Flanagan & Bennett Bank.
Marshfield, Oregon.

JOHN D. GOSS
Attorney at Law.
Marshfield, Oregon.

MISCELLANEOUS

MRS. NETTIE AVERY
Formerly Nettie Hovel
In house adjoining Catholic Church.
Obstetrical Nursing.

C. W. MERCHANT,
ELECTRICIAN
Wiring Done and Guaranteed at Reasonable Rates.

Shop 51 Commercial Ave, Phone 901

W. S. TURPEN

Architect
City Building Inspector
Over Chamber of Commerce
MARSHFIELD, ORE.

MARSHFIELD TURKISH BATHS
210-213 Coos Building
Hours:—Ladies, 10 a. m. to 6 p. m., except Saturday—Gents, 7 p. m. to 1 a. m., except Friday. Phone 2141
TURKISH BATH, \$1.00.
L. BLIVEN, Prop.

N. H. HANSON, V. S.

Veterinarian.
Phone 1201.
Office at Heisner & Miller Co.

HOTELS

The LATTIN Hotel

Guy C. Latin.
New and modern throughout. Rates \$1 per day, \$6 per week. Free baths, newly furnished. Phone 2005.
Next to cor Sheridan and Queen Ave. Marshfield, Ore.

South Marshfield Coal \$5.00 per Ton

We solicit your trade. All orders filled promptly.
COOS BAY FUEL COMPANY
J. C. DOANE & SON, Props.
Phone 534—or Leave Orders at I. S. KAUFMAN & CO.

Temple & Wilson

UNDERTAKING PARLORS.

Funeral supplies in general.
Licensed embalmer with lady assistant.
South Broadway.
Telephones:
OFFICE 2161.
RESIDENCE 2163.

Special Sale of Wines

\$3.00 QUALITY WINES INCLUDING PORT, SHERRY, BLACKBERRY, ANGELICA, MUSCATEL, SAUTERNE FOR \$1.50 PER GALLON.
Phone 481 Free Delivery

Coos Bay Liquor Co.

Marshfield, Ore.
Agents for Rosa Linda Cigar.