

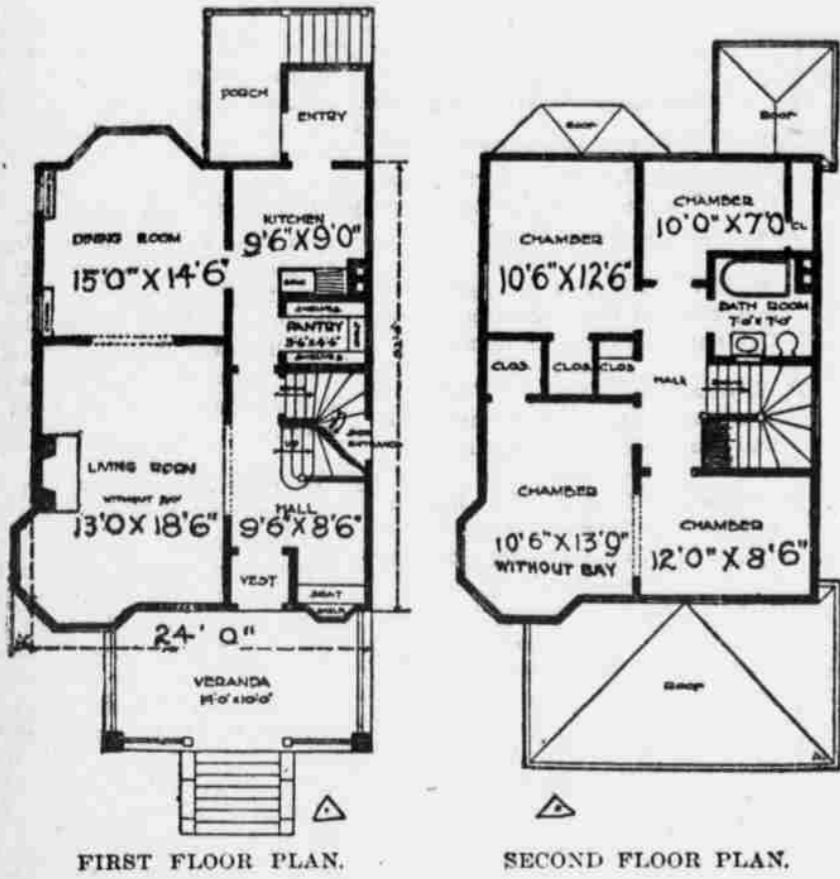
Two Story Frame House.

Handsome, Well Lighted and Substantial—Estimated Cost, \$5,000.

Copyright, 1907, by Henry Wittekind, Chicago.



PERSPECTIVE VIEW.



FIRST FLOOR PLAN.

SECOND FLOOR PLAN.

The estimated cost of the two story and basement dwelling here illustrated is \$5,000. The first floor contains a large living room with fireplace, hall, dining room with china closet, kitchen and complete pantry. The entry has suitable space for a refrigerator. The second floor has four good bedrooms and a bathroom with modern plumbing. The interior finish of the living room is birch, stained mahogany color, with oak floor. The hall and dining room are finished in oak, with oak floors. The kitchen, pantry, bath and bedrooms are finished in birch.

HENRY WITTEKIND.

DON'T GIGGLE, GIRLS.

Nothing More Infectious and Charming Than a Good Laugh.

If half the girls knew how silly they looked and sounded when they constantly giggled they would stop it.

Learn to smile, not giggle.

Nothing is more infectious and charming than a good laugh, but very few people know how to laugh. It is as rare in life as it is on the stage.

A giggle usually comes from nervousness. A girl will giggle when she cannot think of anything to say or when she is trying to be at ease in company.

She will giggle when a boy meets her and says "Good morning." She will giggle when he says "Goodby." She is only nervous, but she appears silly.

It is no wonder that young men speak with utter scorn of the giggling girl. They seem to think her the least attractive maiden on earth. It is trying to attempt to hold any kind of conversation with a girl who will punctuate her every remark with giggles.

It is not always possible to know at first thought whether or not you are one of the girls who giggle. Stop and think about it. Watch yourself the next time you are with any one. See whether this senseless trick is a part of your social equipment. If it is, take any heroic means to strangle that giggle until it is dead.

Far better be silent. You may then get the credit for wisdom that you have not got. Better than all, if you don't know how to give a cheery, musical, spontaneous laugh, then try your best to learn how to smile.

Do not let yourself give a weary smile, for that is the result of effort and self-consciousness, but anything is better than a silly giggle.

"Fighting Bob's" Wife.

Mrs. Robley D. Evans, wife of the admiral, is a soft voiced woman of the south with snow white hair waved back from a face untroubled as a child's. A more dove-like mate for the grizzled naval hero could hardly be imagined. The stirring events of his eventful career have left no impression on her countenance or her soul. Her sunny temperament is one of her greatest charms.

To Make It Thorough.

"Your friend from the west appears to be violently anti-Asiatic."
"He is, indeed. Say, that fellow wants to change the name of Yellowstone park because it reminds him of the yellow peril."

HOUSEHOLD NOTES.

When a finger has been pinched, if it is at once immersed in boiling water the inflammation will be quickly allayed.

When a child is restless from teething it can often be quieted by giving it a warm bath. The water should be as hot as can be endured without burning. Do not allow the child to stay in the bath long or weakness will follow.

Tears have their use, apart from the crying aspect, inasmuch as they refresh and wash the eyes of animals and birds that live exposed to the dust. The eye requires to be kept clear and clean, and tears perform this duty. A striking example of this is shown when the eye is hurt. It at once commences to water, and often this natural method of cleansing relieves the pain and removes the cause of the discomfort.

The Toilet Table.

It is impossible to dress to look one's best unless the toilet table has a brilliant light above it.

It is mortifying to pass from a dim bedroom to a well lighted theater or a friend's house and to discover small wisps of straying hair and errors about one's attire which entirely escaped attention in the semidarkness at home.

A clever woman has her bedroom most cunningly lighted so that by means of another mirror opposite that on her dressing table she can see herself in every position.

This is one reason why she is rarely seen with "yawnings" between bodice and skirt, glimpses at petticoats through plackets and the back of collar badly adjusted.

Summer Candle Shades.

Nothing is daintier for the dining table, especially in the summer, if artificial light be needed, than the candle. It is a simple matter to make pretty shades at a small cost.

Buy the wire frames and make close fitting covers of linen colored pongee, stenciling on the four sides conventional designs.

Another pretty affair is a shade of white linen, also fitted to the wire frame and finished at the bottom with a fringe of narrow valenciennes lace. To make the linen shades more elaborate a little hand embroidery may be added.

Shades made along these general lines have the added value of being easily laundered.

Steamer Breakwater sails for PORTLAND, 6 p. m., SATURDAY, AUGUST 8.

Better send this paper to a friend.

Young Folks

A SAILOR ROOK.

Story of Bird That Made Its Home on Shipboard.

Many years ago as the whaling ship Diana was returning from a voyage in the Arctic ocean her captain and crew were surprised one day to see a rook in a state of great exhaustion flutter into the rigging. The nearest land was more than 200 miles away, so such a visitor was quite unexpected.

With great care and gentleness the bird was caught, and after receiving as much attention as any storm tossed traveler would require it was offered its liberty again. But, though thoroughly restored to health and vigor, it refused to leave the ship. With loud caws of contentment it would hop about the deck as though that were its real home, and when darkness settled down upon the ocean it retired into the rigging, there to roost as comfortably as any of its stay at home relations among their leafy elms. When the Shetland islands were reached the captain of the Diana sent his feathered passenger on shore, naturally thinking that this would be in accordance with its wishes. But the next day, when the ship was forty miles farther on the route to Hull and land was quite out of sight, the sailors saw a dark speck in the sky which grew and grew till, to their astonishment and delight, the passenger they had left behind fluttered joyously on board, cawing its satisfaction at reaching home once more, if not reproving them for giving it the slip.

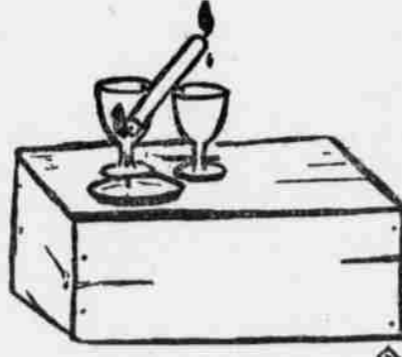
After that there was no more thought of parting, and this Columbus of the bird world became a great favorite with all on board. Sad to say, when the journey's end was reached at Hull the poor bird, which had found upon the stormy sea such sympathy and kindness, was attacked by a party of ignorant boys and killed.

A CANDLE MOTOR.

How to Perform a Simple and Interesting Experiment.

Here, boys and girls, is a new motor for you. Take a candle and make the experiment yourselves.

Take two pins and, first heating them sufficiently to penetrate the candle, insert them in the center of the candle at right angles to the wick on opposite sides so that the projecting points will form an axis upon which the candle



MOTOR IN OPERATION.

can move freely. Trim the ends of the candle and try it upon the edges of two goblets until it balances perfectly. Now light both ends and place a small plate under each to catch the drippings. Now, as one end drips that side becomes lighter, and it goes up while the other drips, and it starts up, and so on. The candle will seew faster and faster until it is all consumed. Little paper mantikins attached to either end add to the entertainment.

The Word Quint.

This word three or four centuries ago had a most elastic signification. Now it means something odd or unusual, something out of the ordinary run of things. Then it meant almost anything you pleased to have it mean. For example, it was applied to things that were agreeable, elegant, clever, neat, trim, gracious, pretty, amiable, taking, affable, proper, spruce, happy, handsome, knowing, dodgy, artful, cunning, gentle, prudent, wise, discreet. Perhaps no other word in the language was quite so comprehensive.

Questions and Answers.

Why should a man named Benny marry a girl called Annie? Because he would be Benny-fitted and she would be Annie-mated.

What is the difference between a man looking upstairs and one going up? One is staring up steps, the other stepping upstairs.

Why have chickens no future to look forward to? Because they have their necks twisted (next world) in this.

Why is a lazy dog like a hill? Because he is a slow pup (slope up).

Why is a bee a great deceiver? Because he is a humbug.

What the Months Bring.

January brings the snow,
Makes our feet and fingers glow.
February brings the rain,
Thaws the frozen lake again.
March brings breezes loud and shrill,
Stirs the forests on the hill.
April brings the violets sweet,
Scatters daisies at our feet.
May brings flocks of pretty lambs,
Skipping by their beery dams.
June brings poodles, lilacs, roses,
Fills the children's hands with posies.
July, hot, brings cooling showers,
Pleasant shade in leafy bowers.
August, with its burning heat,
Brings the fields of yellow wheat.
September brings luscious fruit,
Every variety to suit.
October brings the golden corn,
In growing wagons homeward borne.
November brings the singing blast,
Makes the leaves go whirling past.
December, chilly, brings the sleet,
Blazing fire and Christmas treat.

BUSINESS PERMANENCY can only be secured through a stable foundation. Quality and merit are the essential ingredients in the masonry of a business institution built to stay.

Piano merchants in order to build successfully must have instruments of character—instruments whose merits are known to the purchasing masses and whose reputation is unassailable—whose position in the musico-industrial world is fixed. For over fifty-four years

The Ernst Gabler & Bro. Piano

has occupied an unapproachable position in the world's select art circles. The name of Gabler is inseparably associated with the piano industry and pianos bearing that name have held highest place with the best musicians in all parts of the country.

Remember we conduct the only complete and legitimate piano house in Coos county and at any time you wish to communicate with us you have something more than a handful of promises or a vest pocket memorandum.

PHONE 1441

Rogers Building.

Corner C and Broadway

Marshfield, Oregon

W. R. Haines Music Co.

DIRECTORY Of Coos Bay Manufacturing and Wholesale Houses : : :

The way to build a city is to stand together. Coos Bay factories and jobbing houses make and have for sale many things that Coos County people buy in Portland and San Francisco. Keep the money at home. It helps prosperity.

The following is a list of reliable and up-to-date establishments that are worthy and deserve your patronage.

PATRONIZE HOME INDUSTRY

Tinners & Metal Workers

Phone Marshfield 2103
COOS BAY SHEET METAL WORKS
Tinning and sheet metal jobs a specialty. Estimates given. Contracts taken.
Broadway, opp. Coal Bankers MARSHFIELD, ORE.

North Bend Iron Works

Phone 321 NORTH BEND, ORE.
Iron and bronze castings. All kinds of repair work and logging tools a specialty. **FOUNDERS and MACHINISTS.**

Nelson Iron Works, (Inc.)

Manufacturers of Machinery and Supplies for Mills, Mines, Railroads and Logging Companies. We are pioneers in the manufacturing and repairing of Gas Engines. Don't forget our Gas Engine Supplies.

Foundry and Machine Shop - Marshfield, Ore.

The Modern Company

Wholesale **CANDY, CRACKERS CIGARS, PIPES, ETC.**
Marshfield, Oregon

North Bend Manufacturing Co.

Manufacturers of **SASH, DOORS, MOULDINGS**
All kinds of Millwork, Special Furniture and Myrtle Novelties
North Bend Oregon

Pettijohn, Nicols & Co.
WHOLESALE AND COMMISSION MERCHANTS
Cor. Broadway and Queen Sts. Phone Private Ex 1021

J. L. KOONTZ

Machine and Repair Shops
GENERAL MACHINIST
Steam and Gas Engine Work
On Broadway, near Holland Bathhouse Marshfield, Ore.

J. E. GRAHAM

Taxidermist
Formerly with A. Weiming & Co.
Call or write for terms
North Front Street Marshfield, Ore.

If you are a **Coos Bay Booster** you must drink **Coos Bay Beer**
Phone 1271 for a dozen NORTH BEND, ORE.

American Cabinet Works

Manufacturers of Show Cases, Bank, Store and Office Fixtures
We solicit your orders for Show Cases of all descriptions
North Bend Ore.

Richeker-Barnes Mfg. Co.

Manufacturers of FINE FURNITURE
Myrtle Wood Novelties
Port Orford White Cedar Chests
Electric Wood Fixtures
—and—
Modern Kitchen Cabinets
Factory, Front St. Phone 926
MARSHFIELD, ORE.

Coos Bay Monumental Works

F. M. STEWART, Prop.
Corner 3d and 'D' Sts.
Marshfield, Or., Phone Main 1731