

Coos Bay Times

Entered at the postoffice at Marshfield, Oregon, for transmission through the mails as second class mail matter.

SUBSCRIPTION RATES.
In Advance.

DAILY.

One year \$5.00
Six months \$2.50
Less than 6 months, per month .50

WEEKLY.

One year \$1.50
Local readers, 10c per line.

INDEPENDENT REPUBLICAN STATESMAN PUBLISHED EVERY EVENING EXCEPTING SUNDAY, AND WEEKLY BY

COOS BAY TIMES PUBLISHING CO.

The policy of the Coos Bay Times will be Republican in politics, with the independence of which President Roosevelt is the leading exponent.

ADDRESS ALL COMMUNICATIONS TO
COOS BAY DAILY TIMES
Marshfield Oregon

RESPONSIBILITY.

It Develops the Power and Ability That is in a Man.

Responsibility is a great power developer. Where there is responsibility there is growth. People who are never thrust into responsible positions never develop their real strength. This is one reason why it is so rare to find very strong men and women among those who have spent their lives in subordinate positions. In the service of others. They go through life comparative weaklings because their powers have never been tested or developed by having great responsibility thrust upon them. This thinking has been done for them. They have simply carried out somebody else's programme. They have never learned to stand alone, to think for themselves, to act independently. Because they have never been obliged to plan for themselves they have never developed the best thing in them—their power of originality, inventiveness, initiative, independence, self reliance, their possible grit and stamina. The power to create, to make combinations, to meet emergencies, the power which comes from continuous marshaling of one's forces to meet difficult situations, to adjust means to ends, that stamina or power which makes one equal to the great crisis in the life of a nation, is only developed by years of practical training under great responsibility.

There is nothing more misleading than the philosophy that if there is anything in a youth it will come out. It may come out and it may not. It depends largely upon circumstances, upon the presence or absence of an ambition arousing, a grit awakening environment. The greatest ability is not always accompanied by the greatest confidence or the greatest ambition.

There is at this moment enough power latent in the clerks or ordinary employees in almost any of our business houses to manage them as well or better than they are managed today if the opportunity and necessary emergency came to call out this dynamic force.

But how can clerks who remain behind counters measuring cloth, selling shoes or hosiery, year in and year out, ever know what latent power for organization or executive ability, what initiative they possess? It is true that some of the more ambitious and courageous get out and start for themselves, but it does not follow that they are always able than those who remain behind. Sometimes the greatest ability is accompanied by great modesty and even timidity. Then, again, employees conscious of great ability are often deterred from taking the risk of launching out for themselves because of possible disaster to those depending upon them for daily bread. But thrust great responsibility upon a man, drive him to desperation, and the demand will bring out what there is in him. It will call out his initiative, his ingenuity, his resourcefulness, his self reliance, his power to adjust means to ends. If there are any elements of leadership in him, responsibility will call them out. It will test his power to do things.—Success.

SELECTING A HUSBAND.

Capture Him While He is Still Young, Docile and Plastic.

Because it is the duty of every woman to marry some man it by no means follows that she is deprived of the privilege of making acute discrimination. On the contrary, to fulfill her mission as completely as possible she should exercise the greatest care in selecting a mate. Time was when she had no say in the matter, and in some countries she has little or none today, but in this happily civilized land she still possesses and will undoubtedly hold for all time the right first to choose and then ensnare. It is a noble prerogative—one, in our judgment, that should be appreciated and cherished above all others. And yet, as we have observed, it should be exercised with caution. Let nothing be left to chance, as Plato would have had it when he decreed that pairing should be done by lot. While not overnice, be at least particular in order that the one chosen may feel honored by the distinction conferred upon him and so be the more readily induced to show his undying gratefulness.

Much that was thought and written years ago on how to choose a wife was good enough for the time, but the recent reversal of the relative attitudes of seeker and sought renders it valueless. Nevertheless, despite the fact that in considering the points to be heeded and the precautions to be observed by womankind we find ourselves in a fallow field, certain general principles may be regarded as established. It is best, for example, to capture a husband while he is still young, docile and plastic. Preferably also he should be in love. He may then be trained after the manner best calculated to serve the convenience of her for whom therefore he must and should toil.—George Harvey in North American Review.

Business Directory

Doctors.

D. R. GEORGE W. LESLIE
Osteopathic Physician
Graduate of American School of Osteopathy
Kirksville, Mo.
Office Hours:—9 a. m. to 4 p. m. Other Hours by Appointment.
Office in Nassburg Block
Phone 1611. Marshfield, Ore.

D. R. GEO. E. DIX
Physician and Surgeon.
Office—First Nat. Bank Bldg. Phone 1681

D. R. J. W. INGRAM
Physician and Surgeon.
Office over Sengstacken's Drug Store.
Phones—Office 1621; Residence 783.

D. R. A. L. HOUSEWORTH
Physician and Surgeon.
Office over First National Bank.
Residence, two blocks north of
Crystal Theater. Office Phone
1431. Residence Phone 1656.

Lawyers.

Francis H. Clarke Jacob M. Blake
Lawrence A. Liljeqvist

CHARKE, BLAKE & LILJEQVIST,
ATTORNEYS-AT-LAW
Times Building, Marshfield, Ore.
United States Commissioner's Office.

J. W. BENNETT,
Office over Flanagan & Bennett Bank.
Marshfield, Oregon

C. F. MCKNIGHT,
Attorney at Law.
Upstairs, Bennett & Walker Block
Marshfield, Oregon

COKE & COKE,
Attorneys at Law.
Marshfield, Oregon

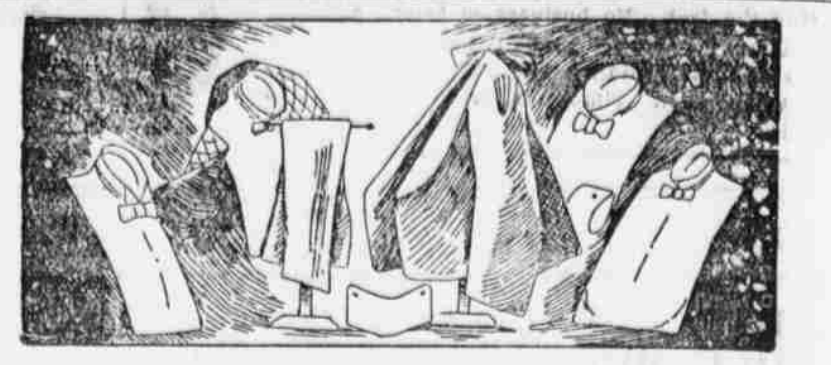
Miscellaneous

CARPENTER
Call R. A. Corthell.
For all kinds of carpenter and cabinet work. Show cases and office furniture a specialty. Phone 561.
Corthell's Delicatessen.

MR. ALBERT ABEL,
Contractor for Teaming of all kinds
Phone 1884.

PIANO TUNING,
By J. F. O'Reilly,
Resident Tuner.
Address Box 249, Marshfield.

ELMER A. TODD, Director
Coos Bay Academy of Music.
Voice, Piano, Pipe Organ, Harmony etc., from beginning to graduation. Singers coached in style diction and interpretation, for opera, oratorio or concert work.
New O'Connell Building, Marshfield.



If you're going to the Ball St. Valentine's night

Run to me with all your might.

I have Collars and Cuffs, I have shirts, I have ties; In fact I have everything that's nobby and wise.

If you want to be the rage with the ladies that night,

See me today and I'll fix you up right.

Geo. Goodrum

THE GENTS' FURNISHER

Representing Style and Quality.

OUR LARGEST SCALES.

The Monster Weighing Machine in the Washington Navy Yard.

The biggest scales in the country are in the navy yard at Washington. They outweigh the largest railway scales by fifty tons. The latter are not to be sneezed at, for they easily weigh as much as a heavily loaded car. The navy yard scales are so accurate that they come within a pound of the exact weight. Railway scales are considered good if they come within fifty pounds. All the large ordnance manufactured for the navy is weighed upon this machine, which is some ten years old. The scales look like ordinary hay scales.

The delicate mechanism is invisible, the most intricate parts being in a broad pit below the ground. The platform is forty-eight feet long and twelve feet wide. Beneath the powerful machinery is a cement base laid upon long piles. A solid base being one of the prime requisites of a powerful weighing machine, it was found necessary to use a pile driver to secure a stable foundation.

The machine is regarded as the finest of its kind in the world and is a splendid achievement of American ingenuity. In order to show the accuracy of the scales an official picked up half a brick and tossed it upon the platform. He then consulted a long brass lever and found that the brick weighed just one pound.

The capacity of the scales is 150 tons. Two twelve-inch guns lying on a forty-eight foot car truck can be weighed on the machine without taxing its capacity.—Washington Star.

OUR LARGEST SCALES.

The Monster Weighing Machine in the Washington Navy Yard.

The biggest scales in the country are in the navy yard at Washington. They outweigh the largest railway scales by fifty tons. The latter are not to be sneezed at, for they easily weigh as much as a heavily loaded car. The navy yard scales are so accurate that they come within a pound of the exact weight. Railway scales are considered good if they come within fifty pounds. All the large ordnance manufactured for the navy is weighed upon this machine, which is some ten years old. The scales look like ordinary hay scales.

The delicate mechanism is invisible, the most intricate parts being in a broad pit below the ground. The platform is forty-eight feet long and twelve feet wide. Beneath the powerful machinery is a cement base laid upon long piles. A solid base being one of the prime requisites of a powerful weighing machine, it was found necessary to use a pile driver to secure a stable foundation.

The machine is regarded as the finest of its kind in the world and is a splendid achievement of American ingenuity. In order to show the accuracy of the scales an official picked up half a brick and tossed it upon the platform. He then consulted a long brass lever and found that the brick weighed just one pound.

The capacity of the scales is 150 tons. Two twelve-inch guns lying on a forty-eight foot car truck can be weighed on the machine without taxing its capacity.—Washington Star.

FLANAGAN & BENNETT BANK

MARSHFIELD, OREGON.
Capital Subscribed \$50,000
Capital Paid Up \$40,000
Undivided Profits \$5,000

Does a general banking business and draws on the Bank of California, San Francisco Calif., First National Bank Portland Or., First National Bank Roseburg, Or., Hanover National Bank, New York, N. M. Rothschild & Son, London, England.

Also sell charge on nearly all the principal cities of Europe.

Accounts kept subject to check, safe deposit lock boxes for rent at 5 cents a month or \$5 a year.

INTEREST PAID ON TIME DEPOSITS

The Last Execution at Tyburn.

The last execution at Tyburn took place on Friday, Nov. 7, 1783, in the person of John Austin, convicted on the preceding Saturday of robbing John Spicer and cutting and wounding him in a cruel manner. In Walford's "Old and New London" it is erroneously said that "the last criminal executed here was one Ryland, who was hanged (sic) for forgery in 1783." William Ryland was executed on Aug. 29, two months before the date of Austin's conviction, and many a poor wretch made the fatal pilgrimage to Tyburn in the interval, hanging by wholesale being the rule in those days. The long procession westward had been attended by such disgraceful scenes that the authorities resolved to hang criminals henceforth outside Newgate prison, straight from the condemned cell. Accordingly on Dec. 3, 1783, the recorder ordered the erection of a scaffold in front of the jail, of which a notice and descriptive engraving appear in the Gentleman's Magazine for the same month, and on the 10th the new hanging place was inaugurated by the execution of ten malefactors.—London Notes and Queries.

"I Trust You."

"I owe my salvation to three words you spoke," he wrote. "When all the world was against me you said, 'I trust you.'"

If every boy or girl who has made mistakes and gone astray could have such a friend a great many of them would return to a normal life. The feeling that somebody believes in us, trusts us, no matter what others believe or say, touches the heart. Criminals are sometimes totally reformed through the consciousness that somebody still believes in them, no matter how low they may have fallen. Could we realize how much this trust and confidence would do for a man when everything else has failed we should be more generous of our confidence in our fellows.—Success Magazine.

BONITA and NORTH BEND FASTEST BOATS ON THE BAY.

Half Hour Schedule.

Run Between Marshfield and North Bend Made in 12 Minutes. Private Landings.

Fare: One way, 15c.; round trip, 25c.

J. A. O'KELLY, Proprietor.

Fake Telephone Calls.

The second day after the new maid came the mistress had company. Just before the callers arrived the maid said confidentially:

"Shall I go out and telephone to you while they are here?"

"Telephone?" exclaimed the mistress. "What on earth should you telephone to me about?"

"Oh, anything," responded the maid. "I always did it at the last place I worked and the place before that. The ladies wanted me to. It gave the impression that they were very popular and were overrun with engagements."

But the mistress, remembering many suspicious telephone calls that had interrupted the conversation when she herself had been calling, declined to purchase popularity on those terms.—New York Press.

No Decoration Required.

It was Mr. Hobart's first experience with waffles, and he liked the taste of them. When he had been served twice he called the waiter to him and spoke confidentially.

"I'm from Pokeville," he said, "and we're plain folks there. Don't care much for style, but we know good food when we get it. I want another plateful of those cakes, but you tell the cook she needn't stop to put that fancy printing on 'em; just send 'em along plain."—Youth's Companion.

HEISNER, MILLER & CO.

Livery, Feed and Sale Stable.
Wood for Sale.
Third & A St. Phone 1201 Marshfield

Fishes That Are Lost.

It is pretty well established that the common mackerel, for example, lays some 50,000 eggs and that out of the number not more than two come to the reproduction stage. Presumably the loss is equally great in the eggs of other fishes. The greater part of this loss occurs, of course, while the young are too small to look out for themselves. By hatching the eggs artificially and maintaining the young until they can shift for themselves it is claimed that in place of one in 25,000 one in a dozen may live to maturity.

Just as Fresh.

Mrs. Newwood—Are those eggs as fresh as the ones I got from you last week? The Grocer—Oh, yes! Some of the same lot, ma'am. I've been keeping 'em for you.—Pick-Me-Up.

Reduction Sale At CHAS. A. STEVENS' Cloak and Suit House Chicago.

Cor. First & B St., Marshfield.
Mrs. M. R. Smith, Agent.

Today's ads. contain no "dull reading" for an alert mind.

WHEN IN NEED of cigars, candy or pipes, telephone your order to THE MODERN COMPANY

Odd Fellows' Building, Marshfield. Prompt attention given all orders.

BEAVER HILL COAL

"Best Coal on Coos Bay." For sale by Masters & McLain, Sole agents—

\$5.00 Per Ton at the Yard, \$6.00 Per Ton Delivered. Special prices on scow load lots.

Phone 2011. Prompt Delivery Guaranteed.

The Steamer STEAMER PLANT

SAILS FROM MARSHFIELD

Sails for San Francisco Tuesday Jan. 28th. No reservations held after the arrival of the ship unless ticket is bought.

F. S. DOW, Agent
MARSHFIELD, OREGON

California and Oregon Coast Steamship Company
Steamer Alliance
B. W. OLSON, Master.
COOS BAY AND PORTLAND
SAILS FROM PORTLAND SATURDAYS, 8 P. M.
SAILS FROM COOS BAY TUESDAYS, AT SERVICE OF TIDE.
F. P. Baumgartner, Agt. L. W. Shaw, Agt.
Couch St. Dock, Portland, Ore. Marshfield, Ore., Phone 441.

WHY DO PEOPLE BUY IN SENGSTACKEN ADDITION? BECAUSE

It is choice inside residence property, lots 50x100 with alleys, is well sheltered with a good bay view and prices of lots are reasonable. For particulars see

TITLE GUARANTEE & ABSTRACT CO.

Henry Sengstacken, Manager.

WE MAKE GAS ENGINES AND BOATS

Speed Launches and Engines a Specialty

All Classes of Boat and Engine Repairing Promptly Attended to

in the North Bend Woolen Mills North Bend, Oregon

H. R. BEVIER, Mechanical Engineer C. H. ALLGER, Boat Builder

ST. VALENTINE'S DAY

A day sacred to St. Valentine; the 14th of February. It was a very old notion alluded to by Shakespeare, that on this day birds begin to mate. Hence, perhaps, arose the custom of sending love tokens at that time.

We have the most complete line of COMIC and PRETTY VALENTINES to be found in the city.

NORTON & HANSEN

Front Street

Portland & Coos Bay S. S. Line BREAKWATER

Sails from Portland Wednesday at 8 p. m.
Sails from Coos Bay Saturdays at Service of Tide.

C. F. McCollum, Agt.
Phone Main 34 - - - - A. St. Dock

Send your teams or phone your orders for

BEAVER HILL COAL

"Best Coal on Coos Bay." For sale by Masters & McLain, Sole agents—

\$5.00 Per Ton at the Yard, \$6.00 Per Ton Delivered. Special prices on scow load lots.

Phone 2011. Prompt Delivery Guaranteed.

WHEN IN NEED of cigars, candy or pipes, telephone your order to THE MODERN COMPANY

Odd Fellows' Building, Marshfield. Prompt attention given all orders.