

# Quality a Certainty

## A DIAMOND

No other gift yields so much pleasure as a Christmas diamond—yet there is nothing in the purchase of which that needs the confidence of the dealer more. A technical knowledge of diamonds is not necessary in selecting these precious stones at this store. We fully realize our responsibility in serving you. Every article is perfectly new—not an old piece to confuse your selection.

## MENS RINGS

An excellent assortment. A ring is one piece of jewelry that many men allow themselves—and then are most particular that its design and character should be dignified and free from any semblance of ostentatious display. Men's rings are a special feature in our store, presenting a splendid assortment of styles, quite in keeping with the most sensitive appreciation of good taste. Our engraving is of the highest standard and all articles of jewelry purchased here will be engraved free.

## COMPLETE STOCK

Our stock is larger this year in every department than ever before. Come see the fine line of Howard, Waltham and other standard grades of watches carried in stock at

## HOWARD'S?

### Manufacturing Jeweler

Open Evenings

Front St.

# ARE WE GOING TO SELL GAS RANGES?

We are, and the very best makes at the lowest prices.

And for hot water for the bath and all other purposes there is nothing as cheap and convenient as the Humphrey Gas water heater. Always ready. We sell them.

We furnish both the gas meter and regulator.

The Coos Bay Gas & Electric Co.  
Marshfield and North Bend.

## WHY DO PEOPLE BUY IN SENGSTACKEN ADDITION? BECAUSE

It is choice inside residence property, lots 50x100 with alleys, is well sheltered with a good bay view and prices of lots are reasonable. For particulars see **TITLE GUARANTEE & ABSTRACT CO.**

Henry Sengstacken, Manager.

## Beaver Hill Coal

MASTERS & McLAIN  
Sole Agents

The Best Coal on Coos Bay

\$5.00 PER TON AT THE YARD  
\$6.00 PER TON DELIVERED

## VACATION READING

Vacation days are coming and going to most every one now, and these books are open doors to the wonderland of nature. The largest selection of gift books in the city.

NORTON & HANSEN

## WE MAKE GAS ENGINES AND BOATS

Speed Launches and Engines a Specialty

All Classes of Boat and Engine Repairing Promptly Attended to  
Shops in the North Bend Woolen Mills North Bend, Oregon  
H. R. BEVIER, Mechanical Engineer C. H. ALLGER, Boat Builder

Everything Electrical at

## Oregon Electrical Supply Co.

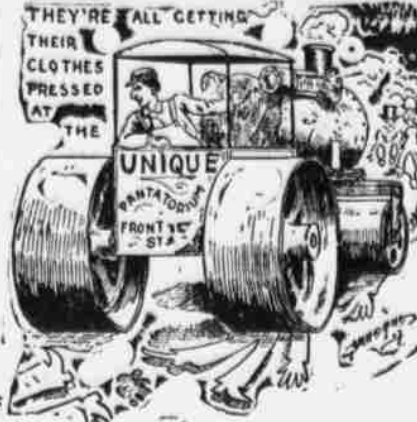
New O'Connell Bldg.

## The Launch Tioga

Leaves Marshfield at 8:30 a. m. for head of the tide water on South Coos River. Returning, leaves at 2:30 p. m.

THOMAS GOODALE

M. R. SMITH, Agent For  
Charles A. Stevens  
C/OAK AND SUIT HOUSE  
CHICAGO  
Cor. First & B. St., Marshfield.



\$1.00 Per Month

Phone 1444

MARSHFIELD

--- AND ---

NORTH BEND

## My Specialty

# ADLER'S. CLOTHES

THEY ARE A POSITIVE ECONOMY — THEY'RE MADE RIGHT, FIT RIGHT AND LOOK RIGHT. that all suits are pressed and put in first-class condition.

Alterations made if necessary, by a first-class tailor. You cannot fail to be pleased by buying here.

## L. W. PLANZ

Tailor and Clothier.  
Sacchi Bldg., Marshfield.

## STEAMER "FLYER"

M. P. PENDERGRASS, Master.  
TIME TABLE.

Leaves Marshfield 7:30, 9:00, and 10:30 a. m., and 1:00, 2:30 and 4:00 o'clock p. m.  
Leaves North Bend at 8:15, 9:45 and 11:15 a. m., and 1:45, 3:15 and 5:00 p. m.  
Makes daily trips except Sundays. Fare: One way, 15 cents; round trip, 25 cents.

## GET YOUR

# Coal AND Wood

.. FROM ..

JOHN ARLANDSON.

PHONE 1331.



PHONE 923

## QUICK DELIVERY

For convenience of Call patrons the Laundry office will be open Saturday evenings until 8 o'clock.

Phone 571 today. Our wagon will call.

## COOS BAY STEAM LAUNDRY

Marshfield and North Bend.

## All Parts of the World

We use the necessary facilities for sending money to all parts of the world, and without danger or loss.

FIRST NATIONAL BANK OF COOS BAY, Marshfield, Ore.

## REAL ESTATE TRANSFERS

Daily Real Estate Report Furnished

By Title Guarantee and Abstract

Co. Henry Sengstacken,

Manager.

December 14, 1907.

Matt Anderson et ux, to Alexander Haglund. Deed. Lot 35 and N 1/2 of lot 34, blk. 15, Railroad Add. to Marshfield. W. J. Rust et ux, to Amanda Rose. Deed. Lots 9 and 10, blk. 0, Western Add. to Marshfield. \$10

Theodore O. Swanton, to Amanda Rose. Deed. Lots 10, 11 and 12, blk. 27, Railroad Add. to Marshfield. \$10

December 15, 1907.

Geo. F. Shafer et ux, to Marlanna Anderlini. Deed. Lots 1, 2 and 3, blk. 8, Shafer's Addition to Central Place. \$275

F. B. Waite et ux, to W. P. Murphy. Deed. Lots 4, 5, 6 and 8, blk. 49, Coos Bay Plat B. Also lots 1, 2, 3, 4, 5, 6, 7, 8, 9 and 10, blk. 21; lots 1, 2, 3, 4, 5, 6, 7, 8, 9 and 10, blk. 28, Coos Bay Plat C. \$10

L. J. Simpson et ux to Bank of Oregon, Inc. Deed. 1/2 interest in tide lands fronting on lot. 2 sec. 3, twp. 25, r. 13. \$5

Wm. J. Donald et ux, to Guy C. Barnum. Deed. Lots 6 and 7, blk. 8, lots 15, 16, 17, 18, 19 and 20, blk. 12; lots 15, 16, 17 and 18, blk. 18; lots 20, 21, 22, 23 and 24, blk. 24; lots 13, 14, 15, 16, 17, 18 and 19, blk. 26, Ocean View Addition to North Bend. \$720

T. J. Beaty et ux, to Daniel S. Cameron. Deed. Lots 20, 21, 22, 23, 24, blk. 4; lots 15 and 16, blk. 6, Edmonston's First Add. to Marshfield. \$10

Ellen B. Hayslip to D. S. Cameron. Deed. Lots 7, 8, 9, 10, 11, blk. 15, Edmonston's First Add. to Marshfield. \$10  
United States of America to Robert Herron. Patent. E 1/2 of NW 1/4, NW 1/4 of NE 1/4, Sec. 35, SW 1/4 of SE 1/4, Sec. 26, Twp. 25, R. 11. Patent. \$10

December 17, 1907.

The McClelland Investment & Development Co. to Clark Bowman. Deed. Lots 3 and 4, blk. 3, Millington. \$200

Marlette Painter and husband, to Carrie Forrest. Deed. Lot 5 and E 1/2 of lot 6, 21, blk. 21, Yarrow. \$10

East Marshfield Land Co. to John A. Carlson. Deed. Lots 29 and 30, blk. 30, East Marshfield. \$300

Flanagan Estate et al, to Edward Donnelly, et al. Deed. Lots 1, 2, 3, 4, 5, 6, 7, 8, 9, 10, 11, 12, 13 and 14, blk. 11, Bunker Hill Add. to Marshfield. \$10  
W. J. Rust et ux, to Anthony Stambuck. Deed. Lots 13, 14, 15 and 16, blk. 4, Bunker Hill Add. to Marshfield. \$10  
Simpson Lumber Co., to Marie Murphy. Deed. Lot 1, blk. 73, Western Add. to North Bend. \$5

## ALL OVER OREGON

SALMON river in Lincoln county will have a saw mill and a cheese factory next spring.

UMATILLA county man bought a farm near Piolet Rock for \$7,500 and in two weeks sold it for \$9,500.

PENDLETON rejoices in the starting of the woolen mill after a temporary suspension for several months. This is not only good news to Pendleton, but to all Oregon and the northwest, as it is an indication of the far reaching demand for more manufacturing establishments, says the East Oregonian.

BAKER CITY Herald: Old General Prosperity has not only been heard from but he is on the way to again dwell with his friends. The best evidence of this fact is the announcement that Stoddard Brothers' sawmill will start up in a few days for all winter's run. This means employment of labor, the circulation of more money, the encouragement of other enterprises to begin operation.

—Toys of all kinds and descriptions at the Coos Bay Cash Store.

—Beaver Hill washed coal \$6.00 per ton. Masters & McLain.

Cash Prize Masquerade. —At Eckhoff Hall, North Bend, Saturday night, December 21.

—Fancy parlor lamps at Milner's

—Granite and Savory roasters at the Coos Bay Cash Store.

# FALL AND WINTER STYLES FOR THE LADIES, BLESS'EM

Here Is Some Information Intended Solely for the Fair Sex— It is the Men's Turn to Pass.

The cutaway lines of the long coat skirts are more accentuated in some of the coats than in others, and the sleeves vary, though in all of the latter one finds a clever adaptation of the kimono idea, and all of the sleeves are three-quarter length.

The high incroyable collar is a novelty launched by Paquin alone and likely to find favor, already, indeed, appearing upon late models from other makers. It is made by Paquin in either the most supple and thin of velvets or in supple satin, folded softly over a thin but carefully fitted lining, and it is, as a rule, prodigiously high in sides and back, ending at each side of the chin in front, so that this height need not be modified.

To keep this collar becomingly close to the throat and in place the maker employs some sort of soft little scarf, running around the inside of the collar at the top and tying under the chin in front, the knot filling the open space left by the collar.

Sometimes, as in the striped velvet model, an appearance of added height is given by running the lower edges of the collar fronts down upon the coats in a point, so giving several faches of extra depth to the appearance of the collar fronts. These collars must, of course, be carefully cut and fitted, but a little study and experiment will prepare even the average tailor for their making. They are not only becoming but do away with the necessity for constant wearing of neck furs.

Paquin has given less attention to waistcoats than many of the other French makers, chiefly because his princess skirt and the cut of his favorite coat do away with the desirability of the waistcoat.

It rises to moderate girdle height, this new Paquin skirt, folding snugly around the waist and falling from there in clinging folds, which mold the hips without wrinkle, drop straight to the ground at sides and back, but are caught up slightly in front by several little horizontal folds, which prevent the too definite defining of the abdomen curve and add surprisingly to the grace of the skirt.

There is absolutely no flare to the skirt, which is long all the way round, and the drop skirt is closely fitted and of thin, soft satin. It is, moreover, drawn in by two elastics at the back and ends, about a foot and a half from the bottom, in chiffon flounces, so that around the feet there is not even the sheer satin support for the outer skirt.

This sounds extreme, and one must admit that, bungled and worn by a woman of pronounced avoirdupois, the skirt would be ridiculous, but upon a long and slender figure or even upon a figure not long but properly slender the skirt as Paquin cuts and fits it is really as graceful and lovely as it is impracticable for any save carriage and house wear. To walk gracefully in the skirt is an art in itself.

For the reader who has shrugged her shoulders at the idea of petticoat elimination we may add that the Paquin princess is not the only one that calls for this elimination. The tendency toward limp, straight skirt lines, has gradually gained force until this fall all of the notable French frocks emphasize this feature.

The full, soft, sheer skirts, weighted to the proper clinging lines by heavy trimmings at the bottom, have the same type of drop skirt as that designed in connection with the Paquin princess, though, of course, there is in the case of a transparent material a soft, silken foundation, and often the supple, clinging drop skirt is not in reality a skirt but merely a pair of bloomers fitted smoothly over the hips and finished with deep chiffon ruffles at the bottom.

One still finds the sheer, soft stuffs more or less filled into the waistband, but more and more makers are departing from this idea, and by one device or another are achieving smoothness at the skirt tops.

But to return to the Paquin group: One of these costumes is a duplicate of a costume made for Mme. Paquin herself and not entered among the tri e models. The coat of black broadcloth is charming of line but extreme in its originality, and is handsomely trimmed in heavy braiding and in large hand made ornaments and pendants of the braid.

The high incroyable collar is of

soft blue satin folded over a plain foundation and held in front by a little scarf of cream net, bound narrowly in blue satin. The princess skirt is of blue chiffon broadcloth, and the blouse is a bizarre little affair of cream net finely tucked and boldly embroidered in Montenegrin design and coloring—vivid blue and yellow and red.

The neck is collarless and finished at the base of the throat by a plaited frill of net bound in blue satin, and tiny buttons covered with blue satin mark the line of union twist the huge sleeves and the body of the blouse, the armhole reaching from the shoulder to the skirt girdle.

For this costume the new figure, flat of back, flat of hips, straight of front, and slimly long, is the desirable thing, though we are assured that Mme. Paquin, who is none of us in her new costume.

## Bean Pole Styles.

It will not be necessary for every woman to be a "tub" or a "beanpole," as was predicted by Elizabeth White, president of the National Dressmakers' association. The new styles for the winter of 1907-8 will give some chance for the girl who is not flat of back, flat of hips, straight in front, and slimly long fares best at Dame Fashion's hands. But many of the most becoming gowns will look best on women who are neither "planks", "tubs", nor "beanpoles".

The new styles are now in New York, and an opportunity to examine them has been afforded to the women of that city. At a recent opening on lower Broadway a phenomenal collection of costly imported gowns was shown in a manner new to New York. Every day during a week carefully chosen mannekins arrayed in elaborate creations from Paquin, Beer, Callot, Laferrier, and their peers straddled through rooms fitted up to represent showrooms in the great Parisian dressmaking houses, posed on Louis Quinze fauteuils, and loftily ignored the gaping and enthusiastic throng that crowded to see the show.

At frequent intervals fresh relays of models appeared, while those who had had their inning retired to don new gorgeousness, and it was with difficulty that the onlookers tore themselves away from the spectacle long enough for luncheon.

A better opportunity for careful study of the autumn modes it would be difficult to find. Impossible, in fact, for even at the famous Parisian openings one sees but the designs from one maker, while there every great clothes artist of Paris was represented by from two to twelve of his choicest models.

The fashion editor of the New York Sun had an opportunity to examine the styles before the general public was admitted.

Certain features run through all these models. The shortened waist line, so dear to Paquin's heart, is suggested in each coat, being perceptible chiefly in the back, where it is emphasized by the adjustment of buttons and passementerie ornaments.

## CAPTAIN KIDD

Oh, Captain Kidd was a pirate fierce  
As ever sailed the sea;  
He shifted his quid, the captain did  
And drew his snickersnee.

The skipper's mate was more sedate  
Her eyes were a violet blue;  
And a rolling gait had the little mate,  
As all good sailors do.

The bos'n bold, who was six months  
old,  
(Though he had no teeth at all),  
He'd the least to do of all the crew  
Excepting in a squall.

Oh, Captain Kidd just stormed he did,  
When things went wrong at sea;  
And brandished in wrath a piece of  
lath,  
The aforesaid snickersnee.

For the Bridget K was a leaky tub,  
Whose course was painfully slow;  
From Kitchen Door to Parlor Floor  
Was as far as she could go!

When the pirate's fearsome cruise  
was done,  
They were safely tucked in bed,  
And papa looked in with a cheerful  
grin—

"Goodnight, little kids," he said  
—Kansas City Journal.