

# MARKETS

## Retail.

Quotations are as follows:

Bacon—Per lb., 1 to 25c.  
 Flour—Per sack, \$1.30 to \$1.50.  
 Potatoes—Per lb., 2 1/2 to 3c.  
 New Potatoes—8c.  
 Cabbage—Per lb., 5 to 6c.  
 Cauliflower—Per head, 10 and 15c.  
 Honey—Per box, 20; 3 for 50c.  
 Onions—Per lb., 5c.  
 Butter—Per square, 35 to 40c.  
 String Beans—3 lbs. 25c.  
 Fresh Peas—6 lbs. 25c.  
 Lettuce—5 and 10c. head.  
 Cucumbers—5c. each.  
 Garlic—15c.  
 Plums—35c. to 50c.  
 Apricots—50c.  
 Peaches, doz.—25c.  
 Apples—10c. lb.  
 Coconuts—Each, 10c.  
 Apples, new—3 lbs. 25c.  
 Melons—10c. to 15c.  
 Beans, green—3 lbs. 25c.  
 Logan Berries—3 boxes 25c.  
 Gooseberries—10c.  
 Strawberries—10c.  
 Raspberries—10c.  
 Botted cider—Per quart, 30c.  
 Asparagus—15c. lb.  
 Rhubarb—4 lbs. for 25c.  
 Beets—Per lb., 3c.  
 Country eggs—Per dozen, 25c.  
 Hens—Dressed, 22c. lb.  
 Chickens—Frys, dressed, 25c. lb.

## 10c.

Brains—Per lb., 15c.; 2 for 25c.  
 Pickled pork—Per lb., 12 1/2c.  
 Corned Beef—Per lb., 7c.  
 Wienerwurst—Per lb., 12 1/2c.  
 Lamb's tongues—6 for 25c.  
**Fruits and Nuts.**  
 Lemons—Per dozen, 20 to 30c.  
 Bananas—Per dozen, 40c.  
 Almonds—Per lb., 50 to 60c.  
 Walnuts—Per lb., 25c.  
 Oranges—Per dozen, 50 to 60c., according to size.  
**Dried Fruits.**  
 Raisins—Seedling layers, per lb., 20 to 30c.; seeded, per 12-oz. pkg., 12 1/2c.; 16-oz. pkg., 15c.  
 Currants—Clean, per 12-oz. pkg., 12 1/2c.; 16-oz. pkg., 15c.  
 Citron—Per lb., 35c.  
 Orange peel—Per lb., 25c.  
 Lemon peel—Per lb., 25c.  
**LOCAL WHOLESALVE MARKET.**  
 Following is a list of wholesale prices as seen on the local market:  
 Oat and wheat hay—\$15 to \$25.  
 Geese—\$1.  
 Hens—10c.  
 Sheep—\$3 to \$5.  
 Veal calves—\$2.75.  
 Beef, steers—\$2.50.  
 Chickens, spring—12 1/2c.  
 Ducks—50 to 75c.  
 Beef, cows—\$2.

## SEYMOUR BELL BACK FROM NORTHERN TRIP

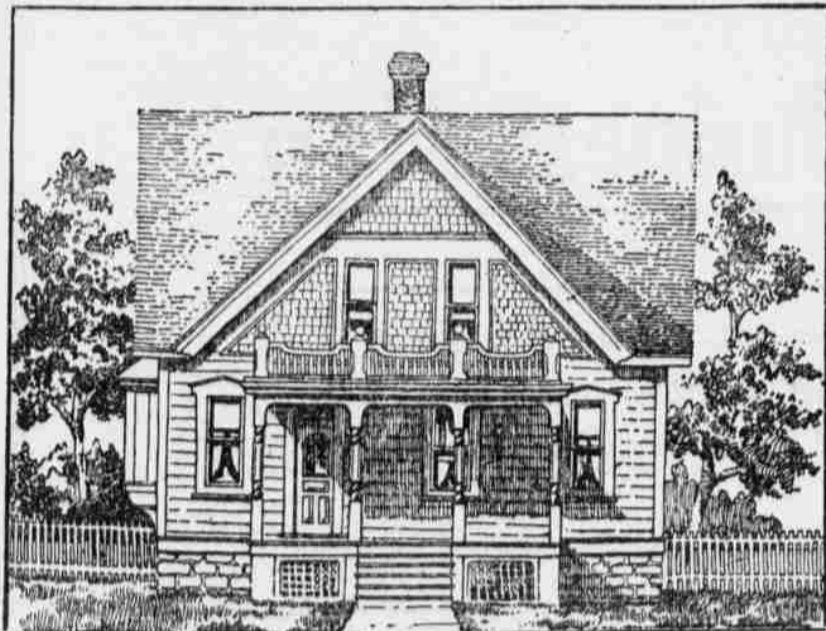
Coos Bay's Electric Light Man Says This is the Only Spot on the Globe.

Seymour Bell, Coos Bay's popular electric light and gas man, arrived in from the north yesterday over the Drain route. While absent he went over to Gray's Harbor and looked the situation over in that territory. Compared to Coos Bay Mr. Bell says things seemed slightly dull. He is more than glad to get back on the bay, and says it is the only place on the globe to live in.

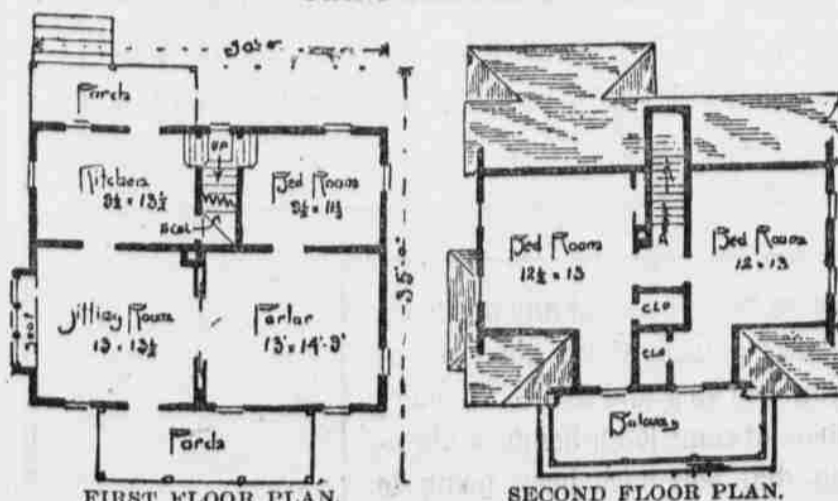
## Cozy Little Cottage.

Pretty, but Economical and Substantial—Estimated Cost, \$1,000.

Copyright, 1907, by E. A. Payne, Carthage, Ill.



FRONT ELEVATION.



FIRST FLOOR PLAN.

SECOND FLOOR PLAN.

This pretty little cottage is 30 by 35 feet over all. There is a cellar under the whole house. The foundation is of brick. The walls of the first story should be sided, the gables and roof shingle. The interior is trimmed in painted pine. Estimated cost, \$1,000. E. A. PAYNE.

# S.P. MUST PAY MORE TAXES

Counties Throughout Oregon Increase Assessments On Company's Roadbed.

## ADDITIONAL \$1,000 A MILE

Linn, Lane, Marion and Douglas Unite in Movement to Secure Just Valuation.

The assessed valuation of taxable property in Douglas county will be between \$2,000,000 and \$3,000,000 higher this year than last year, when it was, in round numbers, \$18,222,000, according to a statement made by G. W. Staley, assessor for that county.

"None of this increase will fall upon the farmer or merchant," said Mr. Staley. It will fall exclusively upon the Southern Pacific Company and the owners of timber land. Southern Pacific rolling stock will be assessed at the same figures as at last year—\$2,000 per mile. The road bed, however, will be raised from \$17,000 per mile to \$18,000 per mile, and in addition the company will of course have to pay extra for improvements made during the year, such as the erection of oil tanks, installation of turntables and laying of side tracks. Timber lands will be increased fifty per cent in value both as to those owned by the Southern Pacific Company and other people."

Mr. Staley's proposed increase in the Southern Pacific roadbed valuation is in line with the policy determined upon at a meeting held at Albany several weeks ago, at which there were present Mr. Staley and the assessors of Linn, Lane and Marion counties. The Lane county assessor has already announced his figure of \$18,000 per mile and the assessors of Linn and Marion counties will do likewise in due time. It was solely through Mr. Staley's figuring that the figure of \$18,000 was decided upon.

## MEN RESCUED FROM DEATH.

### Two Men Marooned On Rock 300 Miles From San Diego.

San Diego, July 24.—The power boat America, just arrived here from the south, reports the rescue of two famishing men on a rock off the

coast of Lower California, 300 miles south of here, and the death of their companion. The latter, who was named Lugo, went from here in a sloop with two companions, Johnson and Machado, on a seal-fishing trip. Lugo landed Johnson and Machado on the rock and then started back to the sloop in a skiff for supplies. The skiff capsized and Lugo was drowned. The other two men nearly died of hunger and thirst before the America picked them up.

## MOTHERS' CLUB TO MEET THIS P. M.

The Mothers' Club will meet today at 3 o'clock p. m., at the Presbyterian church. The subject for today's meeting is "The Influence of Story Telling by Mothers to Their Children." Everybody is cordially invited to attend.

# WANT ADS

GEM RESTAURANT, NORTH BEND. Open day and night Serves everything the market affords.

FOR SALE—The best small business on the bay. Previous experience not necessary. Amount required about \$800. Can double your money in next six months. Address Business, care Times Office.

WANTED—Servant girl. Inquire Mrs. H. H. McPherson.

FOR SALE—A farm of 80 acres on Daniels' Creek. Address E. R. Jones, Box 140, Marshfield, 5-26-1

FOR RENT—House with conveniences. Apply Mrs. C. W. Tower. This is a bargain. Apply at Hall & Hall's office. 6-1-1

WANTED—Men to work in sawmill, wages \$2 per day and upward. Simpson Lumber Co. 8-2411f

NOTICE—TEACHERS WANTED. Application will be received by the clerk of school district No. 6, Empire City, Oregon, for the positions of principal and assistant; references must accompany application.

WANTED—A thoroughly competent girl for general housework. Good wages. Apply to Mrs. Sengstacken.

LOST—July 12, on Front street or near Alert Landing, small plain, gold watch, no initials or engravings; open faced. Suitable reward offered. Leave at Times office, or address, Mrs. S. A. Yoakam, Marshfield, Oregon.

WANTED—Chamber maid at Central Hotel.

# GUNS

∴ and ∴

# AMMUNITION

Our stock of ammunition is FRESH

We carry a complete line of MARBLE HATCHETS, KNIVES, SIGHTS, CARTRIDGE BELTS, GUN CASES, etc.

# "Gunner Y"

Central Hotel Building, Front street.

# That's Right

Come right in for Lunch and Dinner today. Cuisine perfect; service unequalled. The nicest appointed restaurant on Coos Bay. Table and lunch counter trade solicited. If you are going to pay for a dinner why not come where you can get the BEST.

Dining room board \$5.00 per week, lunch counter board \$4.00 per week. Best of attention given.

## LE BON VIVANT

North Front Street  
Opposite City Hall

# TO GOOD DRESSERS

Our line of clothing is characterized by snappy, individual styles with the fit and hang that usually only comes with custom made clothing. Either business or outing styles, fancy worsteds, strong cassimeres or chevots, serges and thibets. Excellently made according to the latest customs.

When buying clothing the main reason you go to a custom tailor is to get the fit. Now we will give you a perfect fit at a price that nowhere in comparison with the price of the custom tailor.

Now Mr. Reader you are a man of good common sense, so come around to our store on Second street today and let us convince you of the above statements. Be Wise.

## PLANZ & ROLANDSON

2nd Street in Sacchi New Building

# ALL PARTS OF THE WORLD

We use the necessary facilities for sending money to all parts of the world, and without danger or loss.

## THE FIRST NATIONAL BANK OF COOS BAY

Marshfield, Oregon.