

Coos Bay Times

AN INDEPENDENT PAPER PUBLISHED EVERY DAY EXCEPT MONDAY AND ALSO WEEKLY BY

THE COOS BAY TIMES PUBLISHING CO.

FRED PASLEY, EDITOR.
REX LARGE, BUSINESS MANAGER.

The policy of The Coos Bay Times will be Republican in politics, with the independence of which President Roosevelt is the leading exponent.

Entered at the postoffice at Marshfield, Oregon, for transmission through the mails as second-class mailmatter.

SUBSCRIPTION RATES:

Single copy, daily,	5 cents
Per month, daily,	50 cents
Three months, daily,	\$1 25
Six months, daily,	\$2 50
One year, daily,	\$5 00
Weekly, per year	\$1 00

Address all communications to
COOS BAY TIMES
Marshfield, Oregon.

THE ELECTRIC LINE.

Much has been said and written about the Roseburg-Coos Bay electric railroad. The people in Roseburg, Myrtle Point, and Coquille are not only enthusiastic but they are taking practical steps to back up their talk regarding the road. The success of the undertaking will be largely dependent on the action of the cities on Coos Bay. The building of the line is practically settled at the Roseburg terminus. With \$125,000 subscribed and the current of enthusiasm still on the upward trend that city can be expected to co-operate to the extreme limit with Coos Bay. If that line is to be constructed the opportunity is here now, when every city and or country affected are working together with one aim in view. The following extract from a Roseburg paper shows the sentiment there:

The few hours soliciting by the committee have settled the electric railroad question—it is now assured. The committee, Messrs W. H. Fisher, A. C. Marsters, F. E. Alley, W. L. Cobb and J. Henry Booth, have "made good" by raising \$120,000 and they can now start for Marshfield backed by money. Coos is ready and waiting, and it will be but the matter of a few days until incorporated.

While the committee is grateful for these liberal subscriptions on the part of Roseburg's citizens, there remains a number of individuals from whom assistance is expected, which will raise the total amount by perhaps \$25,000 or \$30,000. These pledges represent the amount of stock that will be taken to start the road with, but of course many thousands of dollars will be forthcoming when the books are opened that are not yet in sight.

For instance, as soon as the preliminary surveys have been made and the route determined upon, or practically so, stock subscriptions may be reasonably expected from citizens in the small towns on the line and from the thousands of farmers whose lands will be so materially increased in value by reason of the road putting them in touch with markets for their

Flanagan & Bennett Bank

MARSHFIELD, OREGON.
Capital \$100,000
Reserve Fund \$20,000
Paid-up Profits \$10,000

Does a general banking business and draws on the Bank of California, San Francisco; California National Bank, Portland, Or.; First National Bank, Roseburg, Or.; Hanover National Bank, New York; N. M. Rothschild & Son, London, England.

Also maintains branches at all the principal cities of Oregon.

Accounts kept subject to check, safe deposit lock boxes for rent, all business a specialty.

INTEREST PAID ON TIME DEPOSITS

Choice Hay

From

California

\$1.25 Per Bale

See Dow

produce.
It has been the experience of electric road building in Eastern Washington that 85 per cent of the farmers living within two or three miles of the road have taken stock in the company to the extent of from \$100 to \$1,000 each. The same results can be obtained in this instance, and it is safe to say that \$100,000 will be received from the Douglas and Coos County farmers alone.

IS PROMOTED.

Morton L. Tower who formerly had charge as Junior engineer of the Jetty Works at Coos Bay, and the Coquille and Stuslaw Rivers, and Tillamook Bay and the dredging at Coos Bay, has been promoted to assistant engineer U. S. engineer corps, and assigned to duty with the light house department at San Francisco.

NOTICE TO OUR CUSTOMERS

—We are pleased to announce that Foley's Honey and Tar for Coughs, colds and lung troubles is not affected by the National Pure Food and Drug law as it contains no opiates or other harmful drugs, and we recommend it as a safe remedy for children and adults. Red Cross Pharmacy.

---EGGS---

I can furnish the following Thoroughbred Eggs at

\$2.00 Per Setting

Rhode Island Reds
Barred Plymouth Rocks
White Leghorns
Pekin Ducks

JOHN W. FLANAGAN

Send in your orders Now—Eggs Shipped anywhere in the county.

Dr. Bancroft

EYE, NERVE AND CHRONIC TROUBLES OUR SPECIALTY

WILL BE AT
MARSHFIELD

Room E, Rodgers Building

until
Sunday, May 19, 1907

Bank of Oregon

Capital stock fully paid up

50,000.

Transacts a general Banking Business.

North Bend, Oregon

A Record of 2 Years Hard Work on the Part of the Mayor and Council :: ::

THE SOUTH MARSHFIELD BRIDGE

Oakley & Arnold

CIVIL AND MECHANICAL ENGINEERS

North Bend, Ore.

Phone 1021 Office in Meyers Bldg.

The Steamer

M. F. PLANT

Sails for San Francisco Saturday, May 11

F. S. DOW Agent

MARSHFIELD, OREGON

MARSDEN'S COOS BAY BOTTLING WORKS

ROYAL SELECT GAMBRINUS BOTTLED BEER

Bottled in

Quarts, Pints and One Half Pints.

Phone Orders promptly attended to.

Phone 401.

**Ice Cream
Ice Cream Soda
Crushed Fruit
Nut Sundaes
Coos Bay Specials**

At the

PALM

**Sirena Cigars
Solid Comfort**

Bradley & Traver

Distributors, Marshfield

Are you a man who appreciates good clothing at within-reason prices?

If you are, you can come here expecting to see many suits to interest you in our tremendous and varied stock of spic-and-span new clothing for Spring and Summer, which in style, quality and assortment is on a par with

that shown by the leading clothing establishments of New York City. If you haven't been in this Spring to see the splendid values we offer in

MICHAELS-STERN FINE CLOTHING

you shouldn't delay coming another day. You can't find the equal of this celebrated clothing anywhere in town under a third more than we ask. Of strictly high-grade, dependable materials, faultless in cut and tailoring and up-to-the-minute in advanced fashion, you can make a selection of any suit at \$12 to \$30 with every assurance of permanent satisfaction—and that you got the best value obtainable at the price you paid.

Your inspection is especially requested of our

Spring Sack Suits at \$15

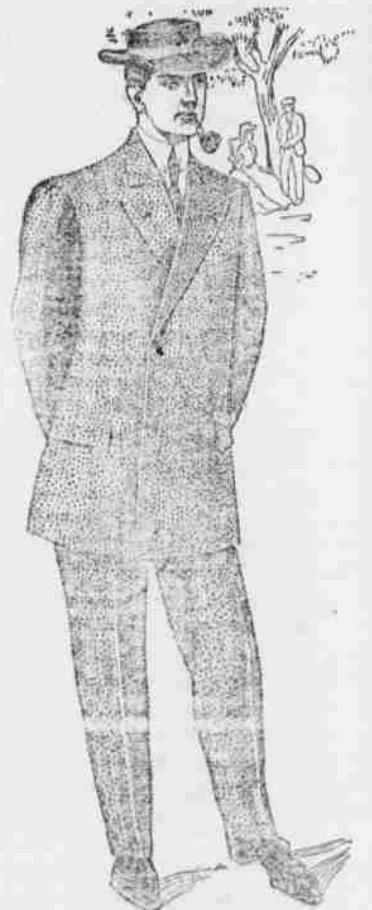
We ask you to judge these suits by the \$18 and \$20 standards of other stores as far as the quality is concerned, and for style, workmanship and finish, with to-measure-made suits costing \$30 or more. Do this and you will surely purchase one of these suits at \$15 in newest patterned worsteds, chevots and cassimeres in the fashionable gray, blue and brownish tones.

Smart Spring Suits for Boys, \$2.50 to \$12

Clothes made of tested fabrics in handsome patterns, strongly tailored to resist wear and hold their shapeliness permanently—values that sell elsewhere at \$3.50 to \$15, here in a great assortment of attractive models at \$2.50 to \$12.

L. A. FREY

North Bend



Copyright 1907 by MICHAELS-STERN FINE CLOTHING, Marshfield, Oregon, U.S.A.

FOLEY'S KIDNEY CURE

Will cure any case of Kidney or Bladder Disease not beyond the reach of medicine. No medicine can do more.

Cures Backache
Corrects Irregularities
Do not risk having Bright's Disease or Diabetes