

# GRAND JURY IS WORKING

Bills Are Returned, Among Them Six For Gambling at North Bend.

# TWO ARE SENTENCED

To Terms of Two Years in Penitentiary and Other Cases Are Tried.

The entire time of the circuit court was taken up yesterday and part of the day before on the case of the Coos Bay Improvement company vs. the Coos Bay Manufacturing company, and it will probably take all day today to finish the case.

The next case set for hearing is the one of Sheridan vs. the Coos Bay, Roseburg and Eastern Railroad and Navigation company.

True bills were returned by the grand jury against J. C. Wilcox, Charles Ross, John Curren and John Voltz for permitting gambling in a building in their possession.

In the case of the State of Oregon vs. Charles W. Dye, charged with attempted criminal assault, the grand jury returned a true bill.

In the case of John A. Barnes, charged with assault with a dangerous weapon, the grand jury returned not a true bill.

**Gets Two Years.**  
The case of the state vs. Homer Ballard, charged with jail breaking and theft, came to a close. Ballard was sentenced to two years in the penitentiary.

Ballard is the fellow who was accused of stealing money from a man by the name of Murray in this city. After being put in the local bastille he broke out, being recaptured a short time afterwards and taken to Coquille. A short time after being locked in the county jail he again broke out and was recaptured. Ballard will probably stay at home for the next two years.

**Another Sentenced.**  
The case of the state vs. Charles McCusley, charged with forgery, was decided by sentencing McCusley to the penitentiary for two years.

McCusley forged a check in North Bend several months ago, and it is on this charge that he was sentenced.

**Two Divorces.**  
The following two cases were decided by granting divorces: Lowe vs. Lowe and Harbison vs. Harbison.

# MARINE NEWS

**TIDE TABLE.**  
The following table shows the high and low tides at Empire for each day during the coming week:

High Water.			
	A. M.	P. M.	
April, 26...	11:45	8.1	11:59 9.6
Sat., 27...	11:45	8.1	11:59 9.0
Sun., 28...	0:38	9.4	1:22 8.3
Mon., 29...	1:14	9.6	2:12 7.6
Tue., 30...	1:58	9.6	3:03 7.6
May, 1...	2:42	9.4	3:59 7.3
Thu., 2...	3:29	9.1	5:02 7.3
Low Water.			
	A. M.	P. M.	
Thu., 25...	4:58	1.7	5:04 1.2
Fri., 26...	5:43	0.8	5:48 1.3
Sat., 27...	6:28	0.1	6:36 1.3
Sun., 28...	7:12	0.5	7:18 1.6
Mon., 29...	7:50	0.8	8:01 2.0
Tue., 30...	8:45	1.0	8:47 2.4
May, 1...	9:37	-0.9	9:38 2.8
Thu., 2...	10:32	-0.7	10:38 3.2

To find the tide hours at other Coos Bay points, figure as follows: At the bar, -0.43; at North Bend, add 0.40; at Marshfield, add 1.51; at Millington, add 2.15.

The New England Kitchen, Marshfield, Oregon, on or about May 10th is to be remodeled and made second to none of such places on the Pacific coast. The place is to be equipped with lunch counter and private boxes. General seating capacity (not crowded) will be about 80. Is to be open all night and day. 4-26-11

**WANT HIM TO RUN**  
Governor of Iowa Would Have Roosevelt Withdraw Statement.  
Des Moines, Iowa, April 25.—In a letter addressed to Geo. E. Bowers, of Orange, Iowa, Governor Cummins declares President Roosevelt should withdraw his statement that he will not accept the renomination. The letter was written in response to an inquiry concerning presidential politics.

# ONIONS COME FROM PORTLAND

But Represent Only Small Part of the Orders Sent in.

The local merchants and wholesale men received small shipments of cabbage, bananas and onions yesterday from Portland. One wholesaler stated that out of an order for fifty sacks of onions, two sacks were all he received and out of a like order of bananas he received but a few bunches.

Cabbage is retailing for from five to six cents per pound at present and no prospect of a drop soon.

Apples are scarce and are selling around 10 cents per pound.

Onions, which are scarce at present, are selling at four to five cents per pound which is another raise of one cent in the past few days.

# DEADLOCK STILL ON

Rhode Island Has Not Yet Chosen U. S. Senator.

Providence, R. I., April 25.—The joint assembly adjourned at the end of the eighty-first ballot which showed the deadlock for United States senator will be as complete as at any time. The final vote gave Colonel Goodard, democrat, forty; Colonel Colt, republican, thirty-nine; Wetmore, republican, thirty. The contest was most stubbornly fought in political history of state.

# WILL GROW POTATOES.

C. F. Smith Buys a Planter to Use on Six Acre Tract.

C. F. Smith received a potato planter yesterday from the Evans Manufacturing company of Springfield, Ohio. Mr. Smith states that he will put in about six acres of spuds this season, and thinks the planter will make the work much more profitable. It is an automatic force feed planter, and is one of the first, if not the first, of its style in this county.

# INDIANS PROTEST

Do Not Want Their Land Taken Away From Them.

Washington, D. C., April 25.—A delegation of Quinault Indians visited Indian Commissioner Leupp and protested against the inclusion of their reserve in Quinault forest reserve. They were assured that if their land was appropriated they would have pay for it.

# This May Interest You

No one is immune from kidney trouble, so just remember that Foley's Kidney Cure will stop the irregularities and cure any case of kidney and bladder trouble that is not beyond the reach of medicine. Red Cross Pharmacy.

# "BAY PARK" THE NAME

Chosen by The Marshfield Land Company For Its New Addition.

# HAVE FINE SPORT

Is Located South of the New Smith Mill Site With Water Frontage.

The directors of the Marshfield Land company held a meeting yesterday evening in I. S. Kaufman's office. They decided to name the land they are plating Bay Park. There are about 90 acres in the plat, which is located just south of the C. A. Smith Lumber and Manufacturing company's holdings, which tract it adjoins. The plat has a deep water frontage on Isthmus Inlet, also railroad frontage, and the new county road between Marshfield and Coquille crosses the property.

The most important feature about the plat, and probably it is the first plat in this vicinity to provide for such a thing, is the laying aside of ten acres in the center of the tract for a public park. The park site is a beautiful tract having running water through it, and is naturally broken, making it a most attractive place.

The company has raised \$600 of the proposed \$6,000 to be provided for the building of a bridge across Coal Bank Inlet. This bridge is to be used by the C. A. Smith road to the local lumber yard, and will not only give Bay Park electric railway privileges, but direct wagon road facilities with Marshfield. The Bay Park plat is about 100 yards from the city limits, and will, owing to its location, make valuable sites for residences. This is manifested by the inquiries that have already been made regarding the buying of lots in this place. The Boise addition adjoins the Marshfield Land company's holdings on the west.

The plat for Bay Park will be filed about May 9. Oakley & Arnold of North Bend are doing the surveying and making the plat.

# RAILROAD SOLD

Medford and Crater Lake Line Up at Auction.

Medford, Ore., April 25.—Receiver Eddy, in accordance with the order of the circuit court of Jackson county, offered at receiver's sale the property of the Medford & Crater

Lake railway. The sale took place at Jacksonville, and, contrary to the expectations of those interested, the bidders were few. Stephen Carver and Judge Durham, for his client, Mr. Dewing of Kalamazoo, Mich., were the only bidders. At 2:15 the bids had crawled up to \$57,500, with no other bidders than the two mentioned. At 2:45 the bidding reached the high-water mark at \$62,700, and the road was knocked down to Judge Durham for Dewing and Sons, of Kalamazoo, at that figure.

The extremely low price offered is somewhat surprising, in view of the rainbow talk indulged in prior to the sale. But the fact that the purchasers of the road are abundantly able to complete it without delay warrants its early operation as soon as the sale is confirmed. Dewing & Sons have large interests in the vicinity of Butte Falls and these interests demand the operation of the line. For this reason the transfer of the road to them gives general satisfaction.

The sale is not conclusive, as an offer of 10 per cent above the accepted bid can yet be made within five days, and the sale will be reopened. Owing to the low figure it is very doubtful if the court will confirm the sale.

# ENDEAVOR TO MAKE PROTEST GENERAL

Unions Will Set Aside One Day To Take President to Task.

Milwaukee, Wis., April 25.—A movement, national in scope, to set aside the Moyer-Haywood-Pettibone day early in May, on which every union in the country is to protest against the action of President Roosevelt in calling Moyer and Haywood "Undesirable citizens," has been launched in Milwaukee. The plan contemplated is that the president shall be taken to task also for his communication to Honore Jackson in which he reiterated his criticism.

# Longest Telegraph Line.

London, April 24.—The longest telegraph line in the world is now working between London and Teheran, the capital of Persia. This is 4,000 miles, 200 under the North sea and the remainder through Belgium, Germany, Russia and Turkey. The system includes ten automatic repeating stations, but there is no human operator except at the terminals, London and Teheran.

We have now in stock a good assortment of finished monumental work, in new and pleasing designs. Selections made can now be erected before decoration day. Call and see us. Coos Bay Monumental Works. Stewart & Mitchell. 4-24-5t-eod

# MARKETS

**Retail.**  
Quotations are as follows:  
Flour—Per sack, \$1.10 to \$1.50.  
Potatoes—Per lb., 2 1/4 to 2 1/2 c.  
Cabbage—Per lb., 5 to 6 c.  
Cauliflower—Per head, 10 and 15 c.  
Honey—Per box, 20; 3 for 50 c.  
Onions—Per lb., 4c to 5c.  
Butter—Per square, 45 cents.  
Boiled cider, per quart, 30c.  
Carrots—Per lb., 2c.  
Turnips—Per bunch, 5c.  
Beets—Per lb., 2c.  
Parsnips—Per lb., 2 to 2 1/2 c.  
Asparagus—1 1/2 lbs for 25c.  
Rhubarb—3 lbs. for 25c.

**Fish.**  
Crabs—\$1 per dozen.  
Steelhead salmon—Per lb., 8, 9 and 10c.

**Plounders.**—Per lb., 5c.  
Herring—Per 2-gallon bucket, 50c.  
Cleaned clams—Per quart, 20c.  
Empire Clams—Per bucket, 50c.  
Salmon (salt)—Per lb., 6c.

**Fruits and Nuts.**  
Apples—Per box, \$1 to \$1.50.  
Cocoanuts—Each, 10c.  
Walnuts—Per lb., 25c.  
Almonds—Per lb., 20c to 30c.  
Lemons—Per dozen, 20c to 30c.  
Bananas—Per dozen, 35c.  
Oranges—Per dozen, 25 to 60c, according to size.

**Fresh Meats.**  
Steak—Per lb., 12 1/2 to 15c.  
Roasting—Per lb., 5c to 8c.  
Veal—Stew, per lb., 8c; cutlets, 10c to 12 1/2 c.  
Porterhouse steak—Per lb., 12 1/2 c to 15c.  
Round steak—Per lb., 10c.  
Chuck steak—Per lb., 10c.  
Mutton—Roasts, per lb., 12 1/2 c to 15c; chops, 12 1/2 c to 15c; stew, 10c.  
Pork—Per pound, 12 1/2 to 15c.  
Lard—5-lbs., 75c; 10 lbs., \$1.50  
Pickled pig's feet—Per lb., 10c.  
Bacon—Per lb., 16 to 25c.  
Hamburger steak—Per lb., 10c.  
Sausage—Per lb., 10c.

**Elect Mrs. Hughes.**  
Mrs. Ada Hughes has been elected a delegate by the local Rebekahs to attend the assembly to be held at La Grande, Oregon. The meeting convenes May 21.

Bologna—Per lb., 10c; 3 for 25c.  
Brains—Per lb., 15c; 2 for 25c.  
Pickled pork—Per lb., 12 1/2 c.  
Corned beef—Per lb., 7c.  
Wienerwurst—Per lb., 12 1/2 c.  
Lamb's tongues—6 for 25c.  
Butter—Per 24 ounce square, 55c.  
Country eggs—Per dozen, 25c.  
Hens—Dressed, 22c lb.  
Chickens—Frys, dressed, 25c lb.  
**Dried Fruits.**  
Raisins—London layers, per lb., 30c to 50c; seeded, per 12-oz. pkg., 12 1/2 c; 16-oz. pkg., 15c.  
Currants—Clean, per 12-oz. pkg., 12 1/2; 16-oz. pkg., 15c.  
Citron—Per lb., 35c.  
Orange peel—per lb., 25c.  
Lemon peel—Per lb., 25c.

**LOCAL WHOLESALE MARKET.**  
Following is a list of wholesale prices as seen on the local market:  
Alfalfa hay ..... \$22 to \$25  
Chickens, spring ..... 12 1/2 c  
Ducks ..... 50c to 75c  
Coquille valley hay ..... \$15 to \$20  
Grain hay ..... \$22 to \$25  
Cress ..... \$1.00  
Hens ..... 10c  
Sheep ..... \$3.00 to \$5.00  
Veal calves ..... \$2.75  
Beef, steers ..... \$2.50  
Beef, cows ..... \$2.00

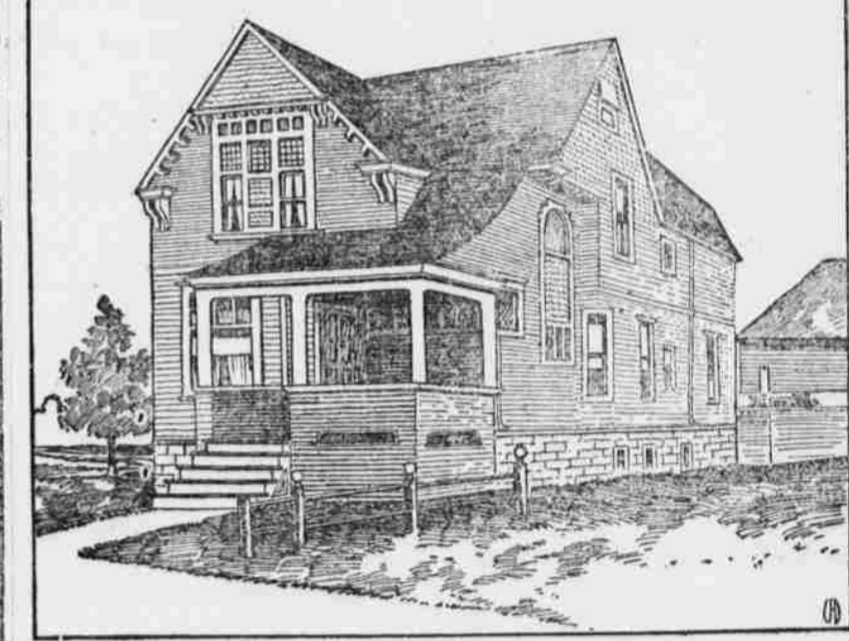
**OUTSIDE MARKETS.**  
Liverpool, April 25.—May wheat, 6s 6 1/2 d.  
New York, April 25.—Lead, \$6 @ \$6.10; copper, \$24.25 @ \$25.25; silver, 65 1/2 c.  
Chicago, April 25.—May wheat opened 78 3/4 @ 79c, closed 78 3/4 c; barley, 68 @ 72 1/2 c; flax, \$1.11 1/2; Northwestern, \$1.18 1/2.  
San Francisco, April 25.—Wheat, \$1.30 @ \$1.35.  
Portland, April 25.—Wheat—Club, 75c; blue stem, 77c; red, 74c; valley, 72c.  
Tacoma, April 25.—Wheat—Blue stem, 77 @ 78c; club, 75 @ 76c; red, 73 @ 74c.

—All Masons in good standing are requested to be present at the Masonic Temple Sunday, April 28, at 1 p. m., to attend the funeral of David Holcomb. By order of W. M. M. Jensen, Secretary. 4-26-3t

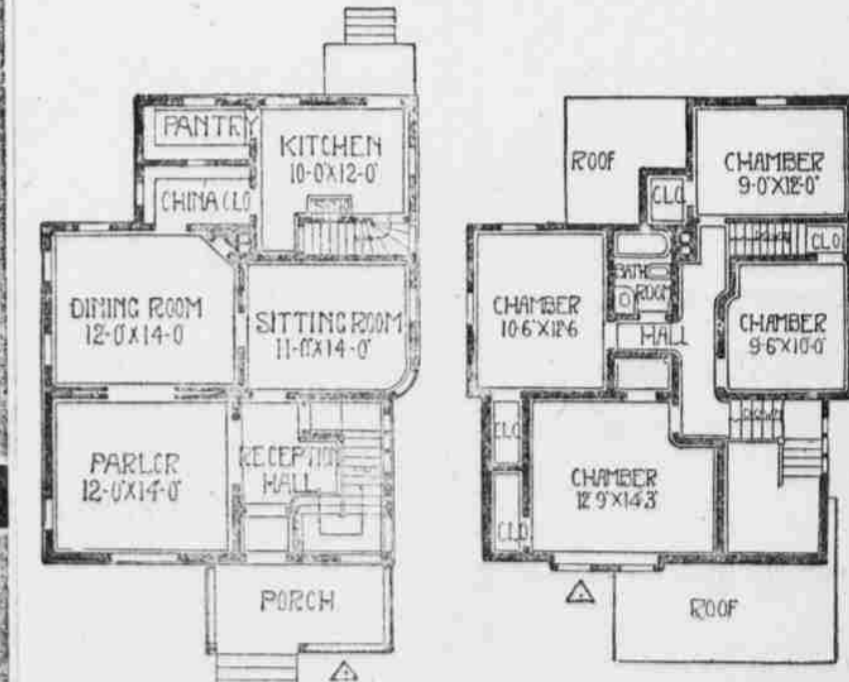
# A Beautiful Cottage.

Well Arranged Interior and Unusually Attractive Front—Cost \$1,800.

Copyright, 1907, by Glenn L. Saxton, Minneapolis, Minn.



PERSPECTIVE VIEW.



FIRST FLOOR PLAN. SECOND FLOOR PLAN.

This beautiful little cottage was built for a banker in Litchfield, Minn., at a cost of \$1,800. The reception room is entered through a small vestibule from the covered porch. A fine stairway leads from the reception room to the second story, which contains four nice sleeping rooms, a sewing room, a bath and lots of closets. The three principal rooms on the first floor are thrown together by large openings. There is a basement under the whole house.  
GLENN L. SAXTON.

## FREE FACTORY SITES

On Deep Water

# SOUTH HARBOR

On

## ISTHMUS INLET

The coming manufacturing district of

## Coos Bay

---

The South Harbor Development Company has special inducements to offer manufacturers desiring locations.

**TOWER & SON** Lockhart Building

---

# SOUTH HARBOR

is near the

## C. A. SMITH BIG SAW MILL PLANT