

## Highway Users Contribute To City Street Support

A total of \$8,817,293 has been contributed by highway users to incorporated cities of Oregon from 1944 to 1949 for construction and maintenance of their streets which are not within the state highway system, according to Ralph Watson, public relations consultant for the state highway commission.

Of this total, the city of Hillsboro has received \$36,257.18 during the period, with \$16,736 coming during 1949. Amounts received by other cities are listed with the figures for the 1944-1949 period first, the 1949 total next, followed by the total for the entire period.

Banks, \$2,607.00; \$1,480.24; \$4,607.00; Beaverton, \$14,320.50; \$6,532.88; \$21,181.47; Corvallis, \$7,644.33; \$3,452.51; \$11,326.84; Forest Grove, \$25,848.90; \$19,220.13; \$28,789.19; Gaston, \$3,514.78; \$1,454.88; \$4,999.64; Sherwood, \$5,620.85; \$2,510.44; \$8,131.29; Tualatin, \$2,351.34; \$1,081.25; \$3,412.59.

**Large Sum Withheld**

This figure does not include the sum of \$350,000 withheld in each of the years 1948 and 1949 by direction of the 1947 legislature to be spent by the commission on city streets subjected to excessive wear due to unusually heavy industrial traffic and to be advanced upon application made by the affected cities.

Prior to 1944 city streets not on the state highway system were improved out of revenue derived from direct city property taxes. The 1945 legislature diverted 5 per cent of state highway income to use on city streets. The 1947 session increased the take to 10 per cent. The allocation is made on the basis of population, with cities of 100,000 population or more on the basis of 1% of the population.

In 1917 when the highway commission was created, cities were given no financial assistance out of highway revenues. In 1921 the legislature provided that the commission could give assistance to streets in cities of less than 2000 population over which main line highway traffic was routed. In 1931 the population limit was lifted and it was provided that the commission may construct and "maintain all city streets over which highway traffic is routed."

**Commission Advances Grant**

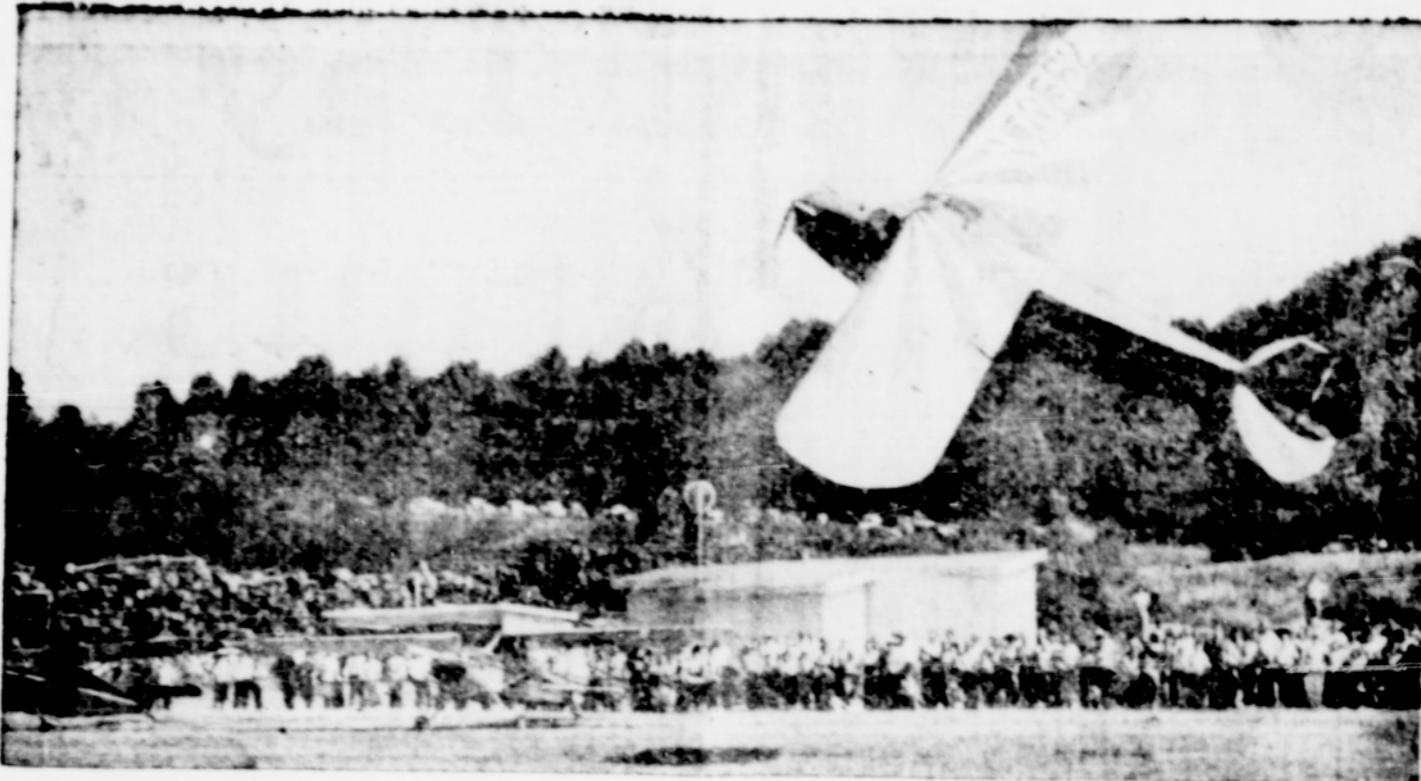
In 1937 the highway commission was given the right of way construction and maintenance of these city streets a total of \$16,067,984, and now is being obligated under the mandate of these various legislative acts to the construction and maintenance of a continually lengthening mileage of city streets.

This in addition to that portion of the highway revenue under the 1 per cent diversion of the 1945 and the 10 per cent diversion of the 1947 legislative sessions.

As a result of the 5 and 10 per cent diversion of the cities received during 1944-48 a total of \$3,839,293. In 1949 an additional \$2,528,090 also for that purpose out of the 1948 calendar year revenue has been disbursed.

At its August meeting an additional distribution of \$1,203,334 will be made under the mandate of an amendment by the 1949 legislature providing for a semi-annual distribution of revenues.

These sums which have been distributed from state highway construction by the legislature constitute, in practical effect, a state subsidy proportionate to and in lieu of local property taxes for street improvement. That the financial assistance thus granted is material is illustrated by the amounts received by a few of the aforementioned cities.



"HOW NOT TO FLY" will be demonstrated like this Sunday at the Hillsboro airport by N. W. Swede, Ralston during the second annual Hillsboro Air Maneuvers. The above picture was taken during

ing a recent Optimist air show in Portland. Ralston will be joined in the act here Sunday by Sammy Mason, one of the top stunt pilots on the Pacific coast.—(Cut courtesy Oregonian)

## Lebanon Contest Recalls Editor's Race to Hillsboro

An attempt by Paul Smith of Mill City, who will try to beat a horse in a 70-mile race at Lebanon, Mead, Sunday, recalls an incident when C. C. Chapman, editor of the Oregon Voter, beat a team of horses in a race from Portland to Hillsboro and back.

The race occurred in the summer of 1904 or 1905 and started in downtown Portland with time out for lunch scheduled in Hillsboro before the return. The team was the best to be supplied by Frasier's livery stable and was captained by two drivers.

The contestants did not travel by the same route as Chapman struck out across country. He barely beat the team to Hillsboro and returned to Portland, crossing the finish line as the dust kicked up by the horses came into view.

Chapman doesn't recall how long the 24-mile road trip took but he thought they left around 10 a.m. and returned about 3 o'clock. In the afternoon he declared that a sturdy man with a good heart has the advantage over a horse both up and down hills. This will not influence the Lebanon race, however, as it will take place on a level track and 100 laps at that.

## Respirators to Aid Polio Fight

Five new respirators purchased by the National Foundation for Infantile Paralysis are en route to Portland for storage in the Foundation's Pacific Northwest equipment pool.

Announcement of the purchase was made in Portland as police in the region continued to march well ahead of last year's incidence. Word of the national organization's action was made known by Felix Montes of Portland, the foundation's Oregon representative, who recalled at the same time the details of a program for aerial transportation of iron lungs to emergency areas in the northwest.

The plan, worked out at a conference between Montes and Colonel J. W. Lewis, commanding officer of the 2343rd air force reserve unit, would place military planes and pilots at the disposal of the foundation to fly equipment to epidemic spots such as the Boise valley.

Montes noted that 71 cases have been counted in Idaho this year and that the outbreak was increasing by as much as seven cases a day. He added, however, that Idaho has not yet called on the pool which presently consists of a portable respirator, hot pack machines and a supply of medical wood. The five iron lungs are valued at approximately \$8000.

Oregon's incidence for the first 27 weeks of 1949 was more than double the new case load for the same period in 1948, according to the state board of health. Five new cases, four in Lane county, were reported for the 27th week and raised the total for this year to 49, as compared with 24 for the same number of weeks last year.

The nationwide count as of July 2, was 3197, or 830 more than had been reported by the corresponding date in 1948.

**Justice Murphy Dies**

Justice Frank Murphy of the United States supreme court died in Detroit, Mich., Tuesday of a heart attack. He was 59.

Say you saw it in the Argus.

## Too Late to Classify

Classified Page Deadline Tuesday 3 p.m. "Too Late to Classify" Deadline 1 p.m. Wednesday

BARTON electric washing machine for sale, in good condition, \$25. Tom Pritchard, 4th and N. S. Soares, Corvallis.

GENTLE Guernsey cow, fine for family, lots of cream, will freshen soon.—Phone 3244, Hillsboro, 177r

ALTA PISCUE green may tip may.—Harold Pasley, Rt. 1, Box 74, Hillsboro, 1 mi W of new West Union school. Phone North Plains 2315.

1939 CHEVROLET Tudor sedan, in good clean condition, nice body, 1931 Model A Ford coupe, seeking beam lights, good tires, in good condition. Will sell both or trade for new. Call 317-1111. Harold Pasley, Rt. 1, Box 74, Hillsboro, 1 mi W of new West Union school. Phone North Plains 2315.

1936 CHEV convertible coupe, \$150, good condition, radio.—Phone Scholls 6286.

5 HEREFORD cows and calves, also weaner pigs.—W. B. Flint, Scholls Ferry rd. mi W, 1 1/2 mi S Kinton, 17

3-BEDROOM, modern, furnished house for rent.—T. L. McCandless, 1 mi S, W. Laurel, 177p

D4 CATERPILLAR tractor, 7 1/2 hp, 1941 model, good condition, 1941 Buick, 38850.—H. F. Bauer, Rt. 1, Box 106A, mi E of Hillsboro, 177p

1940 PLYMOUTH 5-pass coupe, 3400, heater, spotlight, fair shape, \$350. 1942 Plymouth 2-door sedan, 7000 miles on new motor, radio, heater, fogs, \$350.—825 W Main, Hillsboro, 177p

FOR RENT 3-rm duplex, electric stove. No small children.—Contact Mrs. Hatfield at 335 E Adams after 5 p.m., 177p

1940 CHEV truck, 2-speed, motor in good condition, new radiator.

Must sell \$250.—J. R. Minty, 122 E Main, Edson, 177p

RESTAURANT and fountain for sale. Good year round business.—Write Argus Box 4381, 17-19p

ADAM we offer discriminating buyers the best in cameras. All colors. Phone 3303.—Happy Canary Aviator, 342 W Oak, Hillsboro, 177p

18 COW stanchions for sale, cheap. See one at—Julius Duxey, 14 mi S Roy, 17-19p

150 FINE Parmentier pullets, 4 mos, \$1.50 each.—Harader, 3/4 mi N of Hawthorne barn, 177p

**Used Farm Machinery**

AB-JOHN DEERE, overhauled, good guaranteed.

TRC-FARMALL F14, good condition.

AD-CLETRAC, Cheap power for someone.

MODEL 1 CASE, Ready to go for someone.

JOHN DEERE Lindeman, crawler with two-bottom plow and disc.

CASE GRAIN DRILL, 10-8, fairly new.

2-Section Case Tractor, controlled Steering.

**HILLSBORO IMPLEMENT CO.**

West Baseline, Phone 3791 Hillsboro, Ore. 177p

**CALL FOR BIDS**

One 47-pass. School bus, body mounted on 2-ton school bus chassis as per specification.

One 47-passenger school bus body, 20 1/2 in. of 27 in. seat centers. Leather upholstery, heater or air duct on side of body half way down left side. Body to comply with all Oregon school bus regulations.

One 2-ton school bus chassis with frame reinforcements, 5-speed transmission, single-speed rear axle, 50x20-8 1/2 tires, dual rear, oil bath air cleaner, oil filter, deluxe vacuum booster brakes, 1/2 in. diameter Heavy duty generator, 125 amp hrs battery, chassis to comply with all Oregon school bus regulations. Motor not less than 240 cubic in. motor displacement.

No bids will be accepted after 4 p.m. July 25, 1949. The board reserves the right to reject any or all bids.—Father Schindler, clerk, School district No. 58, route 2, Hillsboro, 177p

1939 HUDSON country club sedan, fair shape average in condition, \$600. 1938 Chev Master 4-door, 1700 mi.—C. R. Thibault, motor out Airport road, Phone 3065, 177p

**LOCKER BEEF**

U S inspected top quality beef, front quarter, 36 lb per pound. Haley's Wholesale Fresh Meats, Phone 3661, 17-18p

FOR SALE: One trash burner, A1 shape.—A. J. Hornecker, Rt. 3, near wireless station, phone 3178, 177p

FOR SALE: Baled first-cutting alfalfa hay.—A. J. Hornecker, Rt. 3, near wireless station, phone 3178, 177p

**TOOLS:** Jig saw, \$10; 1/2 hp electric motor, \$17.50; speed hoe, 1 wheel, rubber tire, like new with all attachments, \$10; blacksmith's post drill, geared drill press, hand or power driven, set up or 4x6 post, angle iron motor base attached, solid base, 3-speed, \$17.50; 6 V. Deep fence controller, new dry cell battery, \$7.50; 4-inch fence post auger, \$3.—Albert M. Scott, 1st house off Main at N 12 at above peach orchard, 177p

**PULLETS:** 25 White Leghorn, 4 mos. Set up all with 2 cockerels, \$25; or \$1.60 each. Lay soon.—

Exclusive Agent, Telephone Aloha 6411

### QUALITY CARS priced to move!

LET US DEMONSTRATE one of these late models to you today.

1948 FORD Super Deluxe Tudor, \$1415 Like new and guaranteed.

1947 FORD Super Deluxe Fordor, \$1335 Radio and heater. Clean car, guaranteed.

1946 FORD Deluxe Tudor, \$1125 Radio, heater and sun visor, guaranteed.

1946 FORD Super Deluxe Fordor, \$1225 Radio and heater. A spottless job. Guaranteed.

1941 FORD Fordor Sedan, \$650 A real buy in transportation.

1938 FORD Pickup, \$385

1946 FORD 1 1/2-ton Truck 158-in. Cab and Chassis, \$1075 Low mileage. A perfect farm truck.

SEE THEM — TRY THEM BUY THEM

Enjoy a Refreshing

## MAYFLOWER Cooler

GRADE A MILK CHOCOLATE DRINK BUTTERMILK COTTAGE CHEESE ICE CREAM

**MAYFLOWER MILK**

MacKenzie Motor Co. Third and Washington, Hillsboro, Phone 6911

9x12 HUG, 4 kitchen chairs, sleeping room for rent—333 E. Washington, Hillsboro, 177p

VACANCY in new, licensed, 1-story nursing home — 650 east Oak.

MILKING machines, motor, pressure pump, wheelbarrow, fan, in field, old hay.—Chris Hanson, Rt. 2, Beaverton, Nob Hill Farm, Landgreen road, 17-18p

41 CHEV club coupe, spot-cradle, heater, very good, \$300.—Box 266, Tualatin Ave., Aloha, 177p

FOR SALE: 1948-1949 GMC truck, two-speed axle, 8.25 tires in rear, front 12-in. bed, grain box. Truck has had very good care. Like new at substantial discount. Heater and defroster.—Rudolf Simantel, 1 mi S Laurel, Rt. 3, Hillsboro, 177p

## NOW! TAKE YOUR PICK — SUPER-SAVING READING SPECIALS

Make big savings on this newspaper and your choice of famous magazines!

Any MAGAZINE Listed and This NEWSPAPER Both for Price Shown

American Girl	\$4.00	Photoplay	4.25
American Home	4.90	Popular Science Mths.	5.25
American Magazine	6.00	Popular Mechanics	5.50
Collier's	8.00	Reader's Digest	5.75
Cottonet	5.25	Redbook	5.00
Cosmopolitan	6.50	Silver Screen	4.00
Country Gentleman, 3 yrs.	4.25	Sport	5.00
Flower Grower	4.50	Sports Afield	5.90
Good Housekeeping	6.50	Skysays	4.75
Inside Detective	4.50	The Family Times	3.75
Look	6.50	True Romance	4.00
Modern Romances	4.25	True Story	4.25
Open Road (Boys)	4.00	Your Life	4.50
Outdoors	4.90	Woman's Home	4.90
Parents' Magazine	5.00	Companion	5.50

NEWSPAPER AND MAGAZINES 1 YEAR, UNLESS TERM SHOWN

THE "SUPER FOUR" OFFER THIS NEWSPAPER AND 3 GREAT MAGAZINES Household, 1 Yr. Farm Journal & Farmer's Wife, 1 Yr. Pathfinder (13 Issues), 6 Mo. Value \$6.25 You Save \$2.25 **\$4.00**

**FILL OUT COUPON** Mail Today

Check magazines desired and enclose with coupon.

Gentlemen: I enclose \$\_\_\_\_\_ Please send me the offer checked, with a year's subscription to your paper.

NAME \_\_\_\_\_

STREET OR R.F.D. \_\_\_\_\_

POSTOFFICE \_\_\_\_\_

This combination for outside county in Oregon is \$4.50 per year and outside Oregon in United States \$5.00

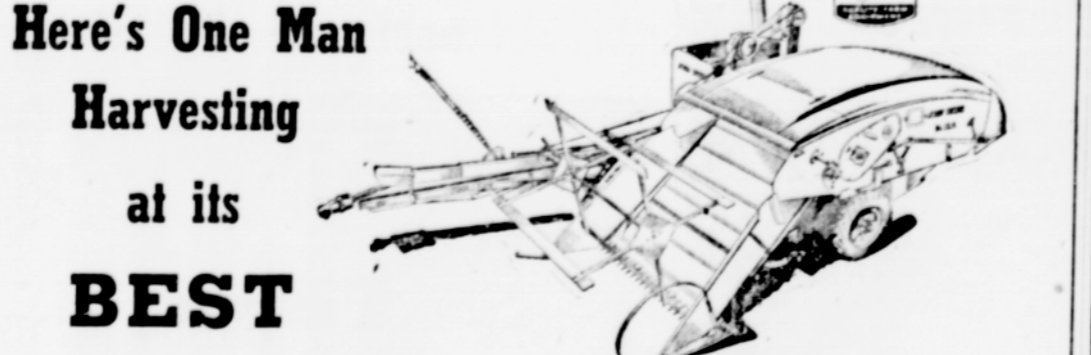


KEEP COOL with a CO-OP ELECTRIC FAN

Keep your lawn green with a Co-op RUBBER or PLASTIC HOSE

RETIRE with Co-op TIRES

**T. V. CO-OP** UNDER NEW MANAGEMENT 214 W. Main St., Hillsboro Phone 6981



**Here's One Man Harvesting at its BEST**

John Deere No. 12-A Straight Through Combine

YOU CAN HARVEST ALL COMBINEABLE CROPS YOU GET CLEAN UNMAGED GRAIN AND SEED IT'S EASY TO DO GOOD WORK SAVES THE GRAIN UNDER ALL CONDITIONS IT'S STREAMLINED WITH NO UNNECESSARY WEIGHT CLEANING UNITS HAVE LARGE CAPACITY TO HANDLE THE HEAVY CROPS V-BELT DRIVES FURNISH SMOOTH, DEPENDABLE POWER THE NO. 12-A IS EASY TO TRANSPORT

Goes Through Narrow Gates and Bridges

**Hillsboro Implement Co.** WEST BASELINE — HILLSBORO

SHOPPING IS FUN THIS easy way!

Well-stocked shelves—conveniently arranged make selections quick and easy. Plenty of real values, too.

**PURPLE PLUMS, 2 1/2 tin . . . . . 2 for 29¢**

**SODA CRACKERS, Tasty Maid . . . . . 2-lb. box 44¢**

**JELL-A-TEEN, 6 flavors . . . . . each 5¢**

**MILK, all brands (limit) . . . . . 2 cans 23¢**

**PEARS, Triumph brand . . . . . 2 1/2 tin 23¢**

**POTATOES . . . . . 10 lbs. 33¢**

**APRICOTS PRICED RIGHT**

**PINEAPPLE, crushed . . . . . No. 10 tin \$1.45**

**MEATS**

POT ROAST . . . . . lb. 49c

PICNIC HAMS . . . . . lb. 45c

RIB STEAKS . . . . . lb. 59c

COUNTRY SAUSAGE . . . . . lb. 45c

**Tualatin Valley Products Co.**

OPEN EVENINGS TILL 8 P. M. SUNDAYS, 9 A. M. TO 4 P. M. Lockers Open Same Hours — A Few Lockers Available