

# Work on Cedar Mill Trading Center Starts

Ground breaking ceremonies for a \$400,000 shopping center at Cedar Mill Park took place July 30 with Fred C. McLain, owner-builder of Hillsboro, turning the first shovel of dirt on the site destined to become one of the biggest business constructions in Washington county.

McLain, who has also developed Cedar Mill Park, stated that the large one-story building will be of ranch type design, and will have an atmosphere all its own, combining a touch of the "days of '48" with the modern, to be known as the Village Trading Post.

The 110,000 foot center will be U-shaped with each wing 200 feet long. Twelve foot sheltered sidewalks surrounding it will have large logs supporting the low porch roof.

Exterior of the building will be finished in various types of building materials including adobe, brick, knotty pine and shakes, lending a touch of the old-rush days. Interiors will be similarly finished using smooth beamed and knotty pine.

The shopping center will contain 37 store spaces, including one for a branch bank. McLain stated. Several have already been leased. Ample parking space around a filling station also to be installed at the opening of the "U" structure will be an added feature.

McLain said that the first locations in the building on the south end will be ready about September 25. Completion is expected in about eight months.

The trading post will occupy a four-acre site, and will have "singing trees" surrounding the building. Near one corner facing the highway will be an old grist mill, its wheel turned by a real mill stream while a recording will play "Down by the Old Mill Stream". The old mill, in reality, will be a resting place for tired shoppers. A covered wagon will even be in the yard.

Cedar Mill Park development covers 110 acres, partly wooded, and 68 homes, ranging from \$11,000 to \$15,000, have been completed. Fifty-one families have already moved in. Homesites for an additional 235 are contemplated to complete the development. Surfaced streets, curbs, Bull Run water, sewage disposal and birch trees have been installed. Homes are financed through F. H. A. insured mortgages and feature heating plants ranging from oil-fired hot air and hot water to electric and reverse cycle.

Tualatin Valley Stages serves the district and Oregon Motor Stages is to extend service over the new highway when it is opened this fall, McLain said. The builder added that house-to-house mail service is also in effect.

McLain stated that the development has been his dream for the past 18 years, and is finally coming true. The complete little town will also have a theatre, Baptist church, and a Boy Scout log cabin nestled among tall Douglas firs. A \$50,000 grade-school is located just across the sunset highway.

## Consolidation Vote Set Tomorrow Night

By Mrs. Elmo Taylor

ALOHA-HUBER — Voting for school consolidation of Aloha-Huber and McKinley will be at school Friday, August 6.

Mrs. Arthur Milldorn of Palm Springs, Cal., is visiting at the home of her aunt, Mrs. Sanford Rogers.

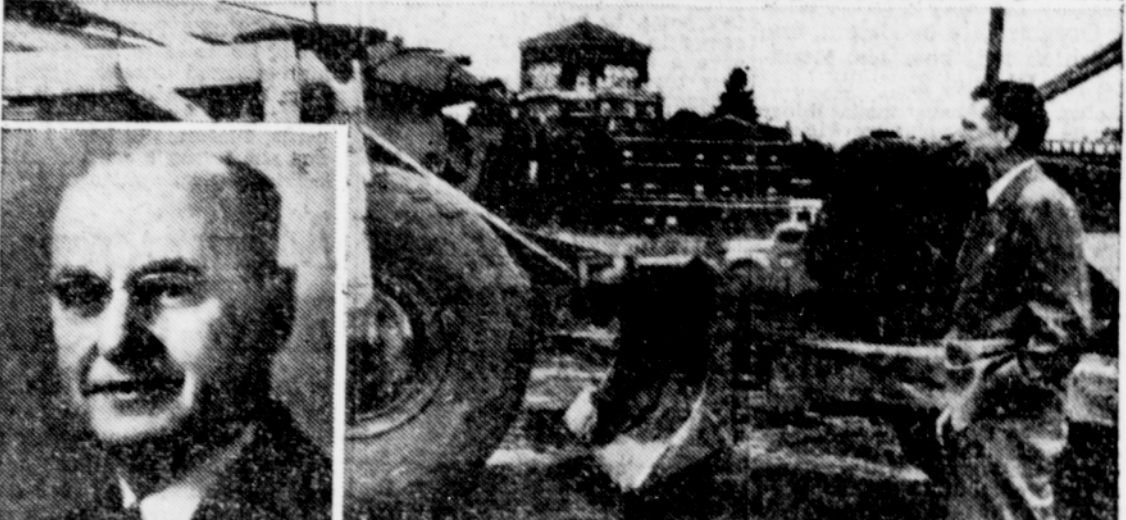
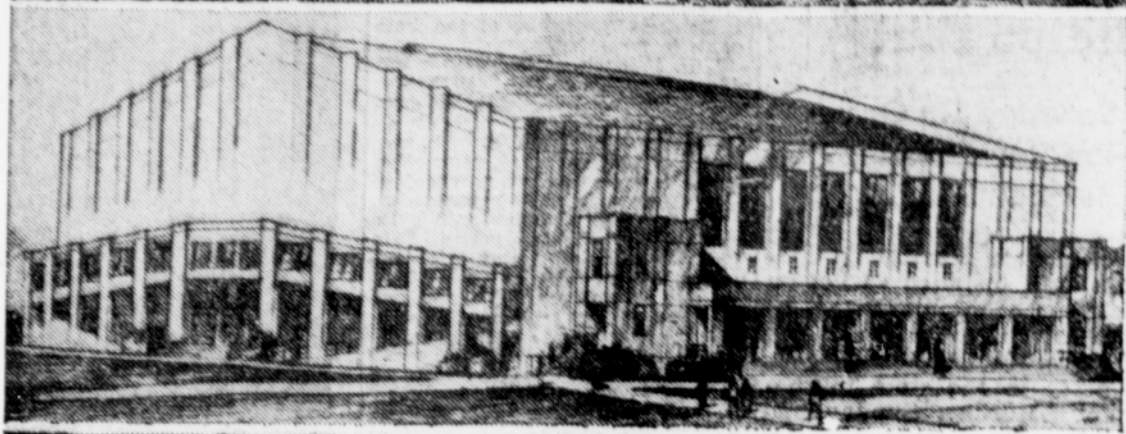
Mr. and Mrs. David Frank of North Richland, Wash., spent the week-end at the home of his mother, Mrs. J. F. Teller and family. They also visited her mother, Mrs. Della Cameron in Hillsboro. Mr. Frank is employed by General Electric at North Richland.

Chamber Meets Tuesday — The Aloha Chamber of Commerce will hold its regular meeting August 10 at the Grange hall.

Mrs. Ray Thomas entertained six guests at a luncheon Monday in honor of her mother, Mrs. Emma R. Sprague before she leaves for a vacation in Denver, Colo.

Dinner guests at the Ray Thomas home Sunday were his parents, Mr. and Mrs. W. Thomas and his brothers-in-law and sister, Mr. and Mrs. E. P. Davis and nephew Patrick Davis.

Goodwill Truck Due — The Goodwill Industries truck will be in Hillsboro on Monday, August 9. Telephone 2902 for pick-up.



OREGON STATE COLLEGE—This is a busy summer in the intercollegiate athletic plant here with the huge new pavilion for basketball and other purposes under construction and the rebuilding of Bell field to get football completely out of the mud. Upper picture shows Head Coach Lon Stiner trying his hand at laying new drain tile assisted by two of his varsity players, Tom DeSilvia, left, and Bill Austin. Center is the architect's sketch of the 10,000-seat pavilion to cost \$1,800,000 and to be paid for from student building fees and building income. Bottom picture shows Coach Slats Gill with a pleased expression watching a huge carryall break ground for the new structure. Insert is Roy E. "Spec" Keene, director of athletics, who has many supervisory duties in connection with the projects.

### HOME REMODELING Reduced!

The new Simpson 3-way Insulating Board Products build, insulate, decorate... and they do it at greatly reduced cost. Your unused space in basement or attic can be converted into an attractive bedroom, hobby, recreation room... for better living with these Simpson products. They're splendid, too, for transforming rooms with worn out interior finish into beautiful, habitable rooms. You'll be amazed at the low cost—the Simpson way. Ask your lumber dealer.

**Simpson** INSULATING BUILDING BOARD  
DECORATIVE PLANK & TILEBOARD

For Ideas and Free Estimates See

## Pool-Gardner Lumber Co.

Fuller Paints — They Last!  
"A Good Place To Go"

Hear the News by Fuller Paints — Station KOIN at 8:55  
151 W. Baseline HILLSBORO Phone 2691

## Spotted Beetles Threaten Crops

The adult eleven-spotted beetles are becoming quite numerous throughout the valley, says Palmer Torvend, county agent. These insects can cause serious damage to cucumbers, beans, potatoes, and many other vegetables and truck crops.

Three per cent DDT dust is quite effective in controlling the beetle and should be applied at the rate of between 30 and 40 pounds per acre. On crops such as lettuce or beans which are going to be harvested immediately, rotenone dust may be preferred, although a dusting with a three per cent DDT dust is generally within the tolerance allowed, the agent said.

**Too Late to Classify**  
Classified Page Deadline Tuesday 3 p. m. "Too Late to Classify" Deadline 1 p. m. Wednesday

ANYTHING MADE OF WOOD  
HOCKERSMITH'S CABINET SHOP  
175 E. Jackson, Hillsboro  
Phone 1821 19c

**Clean Cotton Rags Wanted**  
Will pay 8c per pound  
Hillsboro Argus 14tf

North Brookwood ave. 1st house on left. 20p  
BUILT-IN sink and cabinet, for sale cheap—William Marl, Rt. 1, Box 474A, Aloha. 20p  
18-QUART pressure canner for sale—Call Hillsboro 3169 or inquire at 232 S 4th. 20p  
Good corner location Hillsboro, 2 bedrooms, bath, needs some work \$3500. Terms. 20p  
5 A paved corner, Tobias ave. 3rd, city water, gas, large ch. hse. \$7500. Terms. 20p  
53 A. 35 cult. Chehalis silt loam, river frontage, modern 2-bedrm home, fruit, good barn, hay all in, 13 cows milking and to be fresh, fine irrigation show. \$15,800.  
Large lot, small hse, elec pump, fruit, near highway, Reedville. \$2800 cash.  
46 A 21 A good bearing walnuts, good home, modern, barn, truck \$19,000. Terms.  
Fruit or berry farm, 28 A. 18 cult, liveable hse, pavement, elec, all year creek, barn. East Dairy. \$3800.  
GALAWAY & MCGRAW Farms and Acreage Hillsboro — Phone 2211 20p  
WANT to rent 75 to 100 Acre farm, —507 E Baseline, Hillsboro. 20p  
AUGUST dress sale. A few left. Better cottons, Bembergs, rayons, values \$7.95 and \$8.95, priced at only \$5.95.  
FASHION BAR Milady's Apparel Aloha — Phone 6331 20-23  
FURNISHED sleeping room for rent in private home—439 N 2nd. 20p  
NEW steel stake flat bed for ton-

**WASHINGTON COUNTY AGENCIES**

"COMPLETE COUNTY COVERAGE"  
HARRY M. SEABOLD, Realtor  
337 E. Main Phone 222

Gibson tractor with two-way plow, cultivator and disc harrow.  
Model L Case tractor on rubber. 1 1/2-ton 1942 Chevrolet truck with bed.  
Red Seal Continental power unit suitable for combine power.  
Oliver standard 60 tractor on rubber.  
OLIVER SALES and SERVICE W. Baseline at Dennis 20p  
NEW Minneapolis-Moline 69 combine, and thoroughly overhauled

### WORLD'S FASTEST HAIR DRYER

Makes Your HOME PERMANENT Look Better Last Longer

★ Set your wave by thorough, speedy "30-Minute" drying... it makes your wave stay in. Do it right at home with this safe, noiseless, all-electric hair dryer. New hood holds heat where wanted—on hair—eliminates blown hair and "dryer complexion." With handy wall bracket, the "30-Minute" gives you professional type drying! Finger-tip control with "on" and "off," hot or cold air switch. Heat controlled uniformly for proper drying. You'll want one of these new hair dryers!

**MANY OTHER USES**  
★ Dries nail polish speedily  
★ Spot dries quickly and efficiently during home cleaning  
★ Ideal for drying delicate lingerie and wool sweaters  
★ Fast-dries suede, leather, kid and fabric gloves  
★ An easy way to dry pets after bathing

Complete with Hood and Wall Bracket \$12.95

## BEN FABER ELECTRIC

"If It's Electrical — Come See Us!"  
227 S. 3rd—Hillsboro Phone 2471

Minneapolis-Moline 69 combine for sale—Phone 300, or write A. A. Anderson Chevrolet Co., McMinnville 20-21  
RASPBERRIES, you pick, 5c per lb.—A. Henningsen, 3 miles north of North Plains, on Pumpkin Ridge road. 20  
7-ft WESTINGHOUSE refrigerator, fine condition, \$125.—Phone 4294. 20

AUGUST dress sale. Broken lots mostly Junior size. Some large play suits, values \$3.95 and \$6.95, priced at only \$1.95.  
FASHION BAR Milady's Apparel 136 — Phone 6331 20-23

SMALL cement mixer wanted, also wheelbarrow—Write C. C. Harris, Rt. 1, Banks. 20  
100-LB ICE BOX, porcelain lined, painted enamel finish and modern chrome hardware, \$50.—W. C. Phillips, end North Brookwood ave. Phone 3326 Hillsboro. 20p

AUGUST dress sale, sizes 9 to 44 cotton, some sheer and sun dresses, sizes not complete in every style. Values \$3.95 and \$4.95, priced at only \$2.95.  
FASHION BAR Milady's Apparel Aloha — Phone 6331 20-23

WANTED: Livestock of all kinds, beef, pork, veal and poultry.—Tualatin Valley Products Co., W. Baseline. 20  
WOOD circulating heater for sale 136 East Jackson, Hillsboro. Call evenings. 20

AUGUST dress sale. Broken lots, better cottons, Bembergs, rayons, prices values \$9.95 and \$10.95, priced only \$6.95.  
FASHION BAR Milady's Apparel Aloha — Phone 6331 20-23

1946 CUSHMAN motor scooter for sale—Martin Vanderzanden, 2 1/2 miles north of Union Oil tanks at Cornelius. 20-21p  
WASHING machine in A-I condition, double wash trays—E. C. Wortman, 69 E Walnut, Hillsboro. 20-21

WE buy any kind of livestock or poultry.—Tualatin Valley Products Co., W. Baseline. 20

CAID OF THANKS  
We wish to thank our friends and neighbors for their kindness and sympathy in the loss of our beloved wife and daughter, Conrad Kanteberg, Lillie Taylor, and sisters. 20

'33 CHEV coupe, \$175; 190 cedar poles, 25c each; 26 Ford pickup, \$75.—Hugh McWrightman, Banks. 20p

BROWN'S Hat Shop. Don't send your hats to Portland to be cleaned and blocked. You can get just as good work at the Zenith Cleaners by W. E. Brown the Hatter. We pick up and deliver. 20p

HP JOHNSON outboard motor, perfect—Phone 4294. 20  
REPAIR on tractors, combines, threshers, farm machinery of all kinds, and cars Sell gas and oil, also welding—Airway Grocery and Service, Airport rd, Hillsboro. 20-23

ELECTROLUX gas refrigerator, lady's clothes, coats and dresses, size 34—555 E Cedar, Hillsboro. 20  
FARMALL tractor for sale or trade for horses, cattle, or what have you—S. K. Murphy, 1/2 mile N. of North Plains. 20p

MAGIC CHEF table top gas range and Electrolux gas refrigerator for sale Call afternoons or evenings, —225 E Edison, Hillsboro. 20

STENOGRAPHER wanted by local firm, permanent position—Write care of Argus No. 2793. 20p  
WESTINGHOUSE 4-burner electric range, automatic oven heat con-

rol. Cheap—Call after 5 p.m. First house N of Red Robin on right, Cornelius. 20-21  
BOOKKEEPER wanted by local firm. Permanent position. Write care of Argus No. 2793. 20p  
NO TRADE NEEDED ON 1942 Ford Sedan; 46 Plymouth Sedan; 36 Ford Tudor; 57 Ford coupe. We invite you to come in to see these cars and see the most modern, well-equipped Buick garage west of Portland. Ask about our GMAC plan for repairs, tires, body and fender work, painting, etc.—Broadford Street, Milady, Buick Service, Sales, 339 E Lincoln, Hillsboro, Phone 4411. 20  
SLEEPING room for rent, private entrance—331 E. Jackson. 20

**A STAR PERFORMER IN ANY DAIRY BARN.**

Performance must be tops in the milk you buy. You must have smooth-running efficiency, gentle, massaging milking action, and the milk itself must be easy to use, handle and keep clean. You'll quickly find that ALL of these "musts" and many other benefits, are built into the McCormick-Deering Milker. Let us show you a McCormick-Deering. Then, discover its advantages for yourself.

## DEAN GRAHAM MOTORS, Inc.

DE SOTO — PLYMOUTH  
1st and Washington Hillsboro, Oregon Phone 3861

## BUNYAN DERBY

\$1750.00 Prize Money  
Walk or Run from PORTLAND to BANKS  
Approximately 75 miles.  
Contestants must be rugged individuals over 16 years of age.

SATURDAY and SUNDAY AUGUST 14 and 15

How long will it take the "BUNYAN DERBY" winner to travel 75 miles on foot?

ASK YOUR MERCHANT FOR CONTEST BLANKS

Sunset Bunyan Derby Headquarters  
Your Local Newspaper

516 S.W. Main Chamber of Commerce  
Portland 4, Oregon Banks, Oregon  
HAccon 7700 Phone Banks, 161

SUNSET BAR-B-Q  
Bunyan Derby Banks, Oregon  
Finish Line August 15, 1948

### KEEP FOOD BILLS DOWN WITH CAREFUL SHOPPING

CHEESE VELVEETA. 2-lb. loaf \$1.19  
TOMATOES No. 2 tin 16c  
CORN No. 2 tins (3.65 case) 2 for 31c  
TEA LIPTON'S. The drink for hot days 48-bag Pkg. 51c  
STUBBIES BLITZ-WEINHARD. Case \$2.89 plus deposit  
MAYONNAISE BEST FOODS. Pint jar 49c  
SARDINES PORT CLYDE, Maine. In oil 2 for 29c  
BAKED SHAD It's New and Delicious. No. 1/2 tin 29c  
PEANUT BUTTER SKIPPP. 1-lb. jar 39c

ICE COLD MELONS ALWAYS  
**TOP Quality MEATS**

VEAL ROASTS . . . . . lb. 65c  
VEAL SHOULDER STEAKS . . . . . lb. 68c  
VEAL CHOPS . . . . . lb 70c  
BEEF ROASTS, Blade Cuts . . . . . lb. 65c  
ROUND STEAK . . . . . lb. 85c

FRYERS . . . . . lb. 58c  
LARGE HENS . . . . . lb. 48c

We would like to buy your Eggs and Poultry  
**Tualatin Valley Products Co.**  
West Baseline at City Limits HILLSBORO Phone 2011

## Imperial Feed & Grain Co.

### SEED CLEANING GRAIN STORAGE

Both Bulk and Sack Handling

BUYERS OF GRAIN AND SEED

New Grain Elevator and Seed Cleaning Plant NOW IN OPERATION

## Imperial Feed & Grain Co.

S. Second Ave. HILLSBORO Phone 551