

Dr. Parr and C. Tofler Speakers at BP Meet

The Relation of Education to Vocations was the subject presented by Dr. Frank Parr, executive secretary of education in Portland, at the Business and Professional Women's club meeting Friday night. Many lay people have a misconception of what the schools are doing to help children prepare for life, said Dr. Parr. One hundred years ago high school was for the sons of rich men, to prepare them for college. Today 80 to 90 per cent of high school students have no intention of attending college, and the main problem of schools is to prepare these people for life.

"No one is born to be a square peg in a round hole," Dr. Parr declared. The best we can do is to try to fit every individual's talents, pattern of abilities, and his temperament, training and environment to the job he is to do in a certain range of things.

"The aptitudes for occupations fall into three categories: those dealing with people, those dealing with things and those dealing with ideas. Under the first classification fall social service work, teaching and selling; under the second, engineering and mechanical work; under the third come the writer, research worker and artist.

"One does not succeed or fail because of IQ. There are social and mechanical IQs as well as the scholastic. One may have a very high rating in one, and a very low rating in another. In school we should give each child the things he needs to remove the voids in fields that are more difficult for him, as well as developing his abilities, well as developing his abilities."

"The real test of proper vocational placement," concluded Dr. Parr, "is a feeling of happiness in your work."

Charles Tofler of Tommy Luke's florist shop was the second speaker on the program. He illustrated different types of floral arrangements to be used with various containers. "The best rule in arranging flowers," he pointed out, "is to do what you want to do with them. You need only one tool—a sharp knife. Cut the stems diagonally for they will draw water better. For an arrangement in a shallow bowl, a good basic rule is to make it approximately one and a half times as high as the bowl is broad. An arrangement shouldn't be stiff. Flowers are more appealing if they look as if they had grown there."

Sally Ratcliffe sang "Desert Song" and "The Bells of St. Mary's." At the business meeting it was voted to change the April meeting to the second Tuesday.

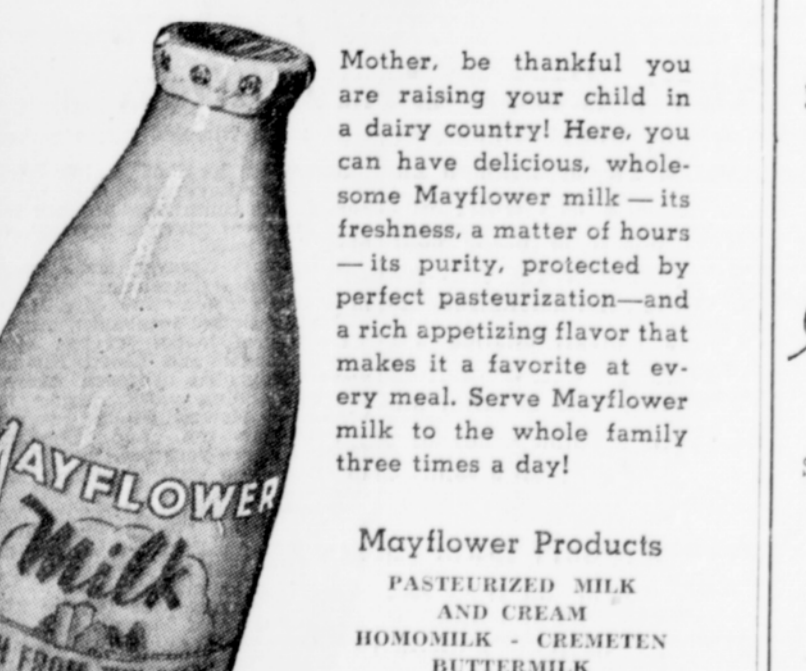
"Say It With Flowers" Cut Flowers Potted Plants One Delivery Daily (Mornings) NEWSHAM FLORAL CO. E. on highway near city limits Phone 1891—Hillsboro

MAYFLOWER Milk

Make It An Important Part of EVERY MEAL



Mother, be thankful you are raising your child in a dairy country! Here, you can have delicious, wholesome Mayflower milk—its freshness, a matter of hours—its purity, protected by perfect pasteurization—and a rich appetizing flavor that makes it a favorite at every meal. Serve Mayflower milk to the whole family three times a day!



Mayflower Products PASTEURIZED MILK AND CREAM HOMOMILK - CREMETEN BUTTERMILK GRADE "A" MILK STILLICIOUS CHOCOLATE

AT YOUR GROCERS OR AT YOUR DOORSTEP

MAYFLOWER Milk PRODUCTS

Distributed by DAIRY COOPERATIVE ASSOCIATION 158 E. Main St. - Hillsboro - Phone 1081

Anita Krahrmer, Stanley Farr Exchange Vows

In a candlelight setting of white chrysanthemums and palms Anita Krahrmer, daughter of Mr. and Mrs. Fred H. Krahrmer of Bloomington, and Stanley Farr of Portland were united in marriage Sunday evening at 8 o'clock at St. Peter's Lutheran church at Bloomington. Rev. O. H. Mueller officiated.

The bride, given in marriage by her father, wore a white satin princess gown with full train. Her full-length veil was arranged in a cascade decorated with pearls from her mother's wedding dress. She carried a white prayer book and an orchid in a cascade of white ribbon.

The maid of honor, Miss Emma S. Edwards of Portland, wore an orchid tulle gown, and the two bridesmaids, Misses Maxine McCann of Portland and Evelyn Krahrmer, sister of the bride, wore identical gowns of yellow chiffon. They all carried bouquets of gardenias and violets. The flower girl, Joyce Ann O'Connor, wore a tiered white tulle dress and carried a basket of snowdrops and daisies. Tommy Krahrmer, nephew of the bride, carried the ring in a calla lily.

George Wile of Portland was best man and Richard Rosecrans, Harold Krahrmer and Vernon Meyer were ushers.

Miss Alice Meyer, cousin of the bride, played the wedding music and Mrs. C. C. Ruth of Cornelius sang "O Promise Me" and "I Love You Truly."

A reception in the church basement followed the ceremony. Miss Freda Pahl cut the wedding cake. Mesdames Harold Krahrmer and George Wile poured. Mesdames Henry Reese and Oscar Pahl cut the ice. Mesdames Albert Krahrmer and Theodore Pahl were in charge of the gifts and Mrs. Vernon Meyer the guest book.

Miss Margaret Ruecker, Mrs. Bernice Schaefer, Barbara Mubly, Mrs. Ruth Wacker, Miss Brenda Germeroth and Miss Doris Simmons assisted with the serving. The bride is a graduate of Hillsboro high school and is employed by Dempsey, Kersey and Duern, printers, in Portland. After a short honeymoon they will make their home in Portland.

Richardson Elected Secretary of Class

Stuart Richardson, son of Mr. and Mrs. C. T. Richardson of Hillsboro, has been elected secretary of the senior class at Phillips academy at Andover, Mass. He is playing forward on the school basketball team and scored 21 points in one game and 19 in another.

Subscribe to The Argus.

for You!

It's Spring

So you want to brighten up this spring? Try a gay print dress.

\$5.95 to \$16.95

DOROTHY'S

READY-TO-WEAR STORE Mrs. Jaye McKelton Smith

Dr. Mander Talks Wednesday Night

Dr. Linden A. Mander, professor of political science at University of Washington, will speak on "The United Nations" at a community forum in Marsh hall, Forest Grove Wednesday, February 27, at 8 p. m.

Dr. Mander is a member of the American Society of International Law, council of foreign relations, and the Institute of Pacific Relations. He is author of "Foundations of World Society" and served as a faculty member on the Reed college institute of international relations. Dr. Mander is also a radio speaker on world affairs.

Donald S. Sloan Speaker Feb. 26

Lions club and Auxiliary will hold a joint dinner meeting Tuesday evening, February 26, at 6:30 at the Episcopal church. Donald S. Sloan of Portland will be the after-dinner speaker. Mr. Sloan will speak on "South America."

Lions club members will have charge of the sale of tickets. All reservations should be made early.

Legion Auxiliary Plans Silver Tea Saturday, March 2

The rehabilitation committee of the Legion Auxiliary is sponsoring a silver tea March 2 from 2 to 5 o'clock at the Legion hall. A program has been planned, including a book review by Mrs. Jaye McKelton Smith on "Who Walk Alone." This is a true story on Leprosy dealing with a victim of the Spanish-American war and the Leprosy colony in the islands as well as the Leprosarium in Louisiana.

Miss Edith Brown of Salem, state membership chairman, will speak on "Why You Should Belong to the Legion Auxiliary" and a musical program will be presented.

Mrs. E. A. Griffith and Mrs. W. C. Christensen of the rehabilitation committee of the Auxiliary, will be co-chairmen of the program. Reservations will be served. The public is invited.

Card Party Tuesday—St. Matthews Altar Society

St. Matthews Altar society will sponsor a card party Tuesday night at the Legion hall, beginning at 8:15. Potluck and 300 will be played.

CDA Sponsors Dance Tonight

Catholic Daughters of America held their regular business and social meeting Thursday evening at 8:30 in the Mason hall. Details were completed for a 150 benefit dance to be held February 21 (tonight) in the Grange hall.

Discussion took place on the annual communion and breakfast planned to be held March 17. New members were introduced and a short talk given by two of them, Miss Anna VanGrinsven and Miss Evelyn Skarving. It was reported that the pins are now available and members may secure them from Alice VanAche, financial secretary. Nora Oestrich, war activities chairman, reported \$2,812.75 as the amount of bonds purchased by members during the Victory Loan drive, also 165 pounds of clothing collected and donated to European war relief. Mrs. Ethel Reinlein serving as chairman of clothing drive. Miss Lily Cordy, member of Court Oregon No. 118, Eugene, was introduced as a guest by Maybelle McCoy.

A musical program was enjoyed by the large crowd present, chaired as yet unknown. They were accompanied by Miss Darlene Jar-

Legion Auxiliary Plans Silver Tea Saturday, March 2

The rehabilitation committee of the Legion Auxiliary is sponsoring a silver tea March 2 from 2 to 5 o'clock at the Legion hall. A program has been planned, including a book review by Mrs. Jaye McKelton Smith on "Who Walk Alone." This is a true story on Leprosy dealing with a victim of the Spanish-American war and the Leprosy colony in the islands as well as the Leprosarium in Louisiana.

Miss Edith Brown of Salem, state membership chairman, will speak on "Why You Should Belong to the Legion Auxiliary" and a musical program will be presented.

Mrs. E. A. Griffith and Mrs. W. C. Christensen of the rehabilitation committee of the Auxiliary, will be co-chairmen of the program. Reservations will be served. The public is invited.

Card Party Tuesday—St. Matthews Altar Society

St. Matthews Altar society will sponsor a card party Tuesday night at the Legion hall, beginning at 8:15. Potluck and 300 will be played.

Nissen Honored On His 80th Anniversary

Theodor Nissen of Scholls celebrated his 80th birthday February 15 at his home. Present for a birthday dinner were his four daughters, Mrs. Christine Whitford, Mrs. Irene McCann of Portland, Mrs. Mary Grace of Scholls, and Mrs. Gladys McCann of Clatsop Mountain. Lester, James McCann and son Bobby were also guests.

Mr. Nissen has lived in Scholls community about 45 years.

Social Circle Plans Washington Meeting

The Social Circle of the Congregational church will hold its Washington's birthday meeting and tea on Thursday afternoon, February 28, at 2:15.

Miss Gertrude Boyd Crane of Pacific university will be the guest speaker.

Mrs. John Bailey is chairman for the tea and will be assisted by Mrs. H. Kellington, Mrs. L. M. Phillips and Mrs. Verne McKinney.

LADIES' PROFESSIONAL Hose Mending

Prompt, Courteous Service

Rush Work Done

254 N. 1st Ave. Hillsboro, Oregon

TENDER, JUICY MEATS

... EVERY TIME or your money back

You don't have to buy fancy-cut steaks or the choicest roasts to be sure of tender, delicious meats at Safeway. Even our least expensive cuts—short ribs, boiling meats and pot roast—are unconditionally guaranteed to please. If you ever get a cut of Safeway meat that fails to measure up to your judgment of what fine meat should be, let us know. We will give your money back, without return of the meat.

Lunch Suggestions—

Lunch'n Loaves, Asstd. Type 3 lb.	34c
Thuringer, Tasty	lb. 38c
Bologna, A. C. Type 2	lb. 34c

Sea Foods

Chinook Salmon Sliced	lb. 42c
Halibut Sliced	lb. 42c
Fresh Oysters, Medium	Pint 65c

Grade A Chickens

Fryers, Eviscerated	lb. 69c
Fowl, Dressed	lb. 35c

APPLE BUTTER

Libby's, Very smooth No. 303 jar

19c

PEANUT BUTTER

Howdy (Coarse grind) or Beverly (Regular) 2-lb. jar

29c 55c

Safeway has a large selection of "Spreads" that very nicely take the place of the "Oh, so scarce" butter. Listed above are two of the favorites!

Canterbury Tea 1/2 22c 1 43c 16-oz. pkg. 13c
Tomato Juice Sunny Down No. 2 10c 46-oz. can 21c
Tomato Juice Libby No. 2 fancy 11c 47-oz. can 24c
Blended Juice Blend O' Gold No. 2 can 18c
Shredded Wheat Kellogg pkg. 11c
Baby Cereal Heinz dry 8-oz. pkg. 15c
Tenderoni Van Camp 6-oz. pkg. 2/15c
Malt Blue Ribbon, light or dark 3-lb. jar 55c
Hi-Ho Crackers 1-lb. pkg. 21c

LUX TOILET SOAP

for complexion and bath

3 bars 20c

White Magic Bleach	Quart 10c
Clorox Bleach	Quart 15c
Toilet Soap, White King	3 bars 14c
Lava Soap	Medium size bar 3/17c
Dog Meal, Gaines, 2 lbs	22c 5 lbs 49c
Dog Food, Home Plate	8-lb. pkg. 77c

How to Use Meat to Make Breakfasts Hearty

Cold days call for hearty breakfasts, and one of the best ways I've found to make a breakfast substantial is to include some meat in the menu. Here are some favorite winter breakfasts that will also make a special hot for Sunday brunch.

COLD MORNING SPECIAL
Tomato Juice with Lemon Wedge
Hot Apple Pancakes Rolled Around Sausage Links

Warm Syrup Coffee or Cocoa

APPLE PANCAKES—To 2 cups of prepared pancake flour, add 2 eggs and 1 1/2 cups milk beaten together. Blend well. Stir in 1 cup finely chopped apples and 2 tablespoons melted shortening. Drop by tablespoonfuls onto greased griddle or frying pan. Bake until bubbles break; turn and bake until golden brown. Wrap each pancake around a well-cooked sausage link. Serve hot with warmed syrup. Serves 6.

WAKE UP TO THIS!
Spiced Applesauce with Raisins
Sautéed Kidneys with Mashed Potato Cakes
Buttered Toast
Coffee or Milk

SAUTEED KIDNEYS—Skin, split in half lengthwise, and remove white tubes and tissues from 6 to 12 veal or lamb kidneys. Wash thoroughly. Cut into thin slices and cover with flour, salt and pepper. Sauté in drippings about 3 minutes or until browned. Add 1 cup hot water and cook about 5 minutes, or until thickened, stirring constantly. Serve hot. Serves 6.

START THE DAY RIGHT!
Baked Winter Pears
Broiled Lamb Chops and Hashed Brown Potatoes
Toasted English Muffin
Coffee or Milk

HASHED BROWN POTATOES—Melt 3 tablespoons shortening in a heavy frying pan; add 3 cups chopped or finely cut cooked potatoes, heaping them toward the center and away from the edges of the pan; season to taste. Cover with a lid or heavy plate, press down so that cover is right on top of the potatoes. Place a box of salt or rock on top to give pressure. Cook slowly and without turning for 15 to 20 minutes, or until crusty brown. Turn out onto a warm plate. Cut into 4 or 6 pie-shaped wedges to serve.

Carol Drake, Director
The Homemakers' Bureau
Another Safeway Service

SAFEGWAY GUARANTEED MEATS

full of flavor

LEG O' LAMB	Grade AA lb. 39c
	Grade A lb. 38c
Shoulder Lamb Roast	Grade AA lb. 35c
	Grade A lb. 34c
Lamb Rib Chops	Grade AA lb. 43c
	Grade A lb. 45c
Link Sausage	Type 1 lb. 48c
Pork Sausage	Bulk Type 1 lb. 39c
Loin Lamb Chops	Grade AA lb. 58c
	Grade A lb. 55c

FEBRUARY VEGETABLES

The season's finest fruits and vegetables, priced by the pound, await your selection at your Safeway.

Pre-ripened PEARS Juicy D'Anjou	lb. 13 1/2c
WINESAP APPLES extra fancy, fancy and C grade	lb. 12c
GRAPEFRUIT Desert White	lb. 5c
CABBAGE Green—Medium size	lb. 6 1/2c
PARSNIPS Local crop, smooth, crisp	lb. 8c
YAMS—Southern	lb. 11 1/2c
CALAVOS Ready to eat Avocados	lb. 35c
BROCCOLI—Bunched	lb. 18c
CARROTS	lb. 6 1/2c
POTATOES No tops to pay for U. S. No. 1	10 lbs. 45c
	Famous Idaho 100-lb. sack \$3.69

Fresh produce features—For Fri. & Sat.

SAFEGWAY LOW PRICES

You get more for your money at Safeway!

Hershey's Cocoa for richness and flavor	1/2-lb. pkg. 5c
Snowflake Crackers really fresh sodas	1-lb. pkg. 17c
Sperry Pancake Flour	10-lb. pkg. 69c
Wheaties for a healthy breakfast	3 for 25c
Sunbrite CLEANSER Don't be without it	3 cans 10c
Pancake FLOUR 20-oz. pkg. 9c 40-oz. pkg. 15c	
Sylvania Light Globes handy carton of 5	49c (tax included)
Cigarettes Camels, Kools, Chesterfield, Lucky Strike, 2-pkgs. Cartons	26c (10 for \$1.28)

Rolled Oats MORNING GLORY Quick or Regular 3-lb. Box 26c	Wheat Hearts SPERRY'S 2-lb. 14-oz. Pkg. 32c	GREAT NORTHERN BEANS 5-lb. Cello pkg. 46c	PURE EGG NOODLES ROSE 1-lb. Cello pkg. 19c	RANCHO VEGETABLE SOUP 10 1/2-oz. Can 8c
---	--	--	---	--

5252 returned service men employed by Safeway by Dec. 31, 1945—welcome back fellas, Glad to Have You!

Sweatheart Toilet Soap

The Soap that agrees with your skin. Reg. Size 2 bars 13c

Woodbury Toilet Soap

For the Skin You Love to Touch 3 bars 23c

Pears Green tag, standard No. 2 26c	Sw't Potatoes Pel-La-Co. No. 2 28c
Gardenside Peas No. 2 qm 11c	Diced Carrots Del Monte 303 jar 11c
Libby's Beets Diced or cut 303 jar 12c	Red Salmon Del Monte No. 1 tall 38c
Beet Sugar 5 lbs. 32c 10 lbs. 63c	Tuna Fish Tuxedo brand 1/2 can 27c

IDA HAD THE IDEA

HELP HURRY PEACETIME GOODS! The end of the war did not stop the need for turning in waste fats. Many important products—nylons, tires, soaps and elastic, to name but a few—require the use of scarce industrial fats and oils in their manufacture. Safeway meat sections continue to pay four cents per pound for the waste fats you bring in.

You get more for your money at SAFEGWAY

IDA: YOU KNOW I'D LOVE TO BUY ALL THE FINEST FOODS... BUT WITH THESE HUNGRY YOUNG BEARS IN THE HOUSE I JUST CAN'T AFFORD IT! THEY EAT TOO MUCH!

THERE'S AN AMAZINGLY SIMPLE WAY TO SOLVE THAT PROBLEM, MARY!

YOU MEAN WE COULD AFFORD THE BEST BRANDS? HOW?

THAT'S JUST WHAT I MEAN! YOU COME SHOPPING WITH ME TOMORROW MORNING, AND I'LL SHOW YOU!

YOU SEE?

I CERTAINLY DO, IDA! YOUR SUGGESTION OF BUYING ALL OUR FOOD HERE AT SAFEGWAY WILL LET US ENJOY THE FINEST AND SAVE MONEY TOO!