

### Western Nut Growers to Hold Annual Two-day Meeting Here

The Western Nut Growers' association will hold its 26th annual meeting in conjunction with an exhibit offering almost \$100 in prizes at the Hillsboro chamber of commerce December 4 and 5. The general public will be welcomed to enter the competition.

The premium list offers prizes for best exhibits of walnuts, filberts, chestnuts and other special divisions for candies, pastries and breads using walnuts or filberts in their recipes. L. R. Pearson, vice-president of the association, is chairman of the prize committee.

Fred Beach is chairman of a local committee on general charges of the two-day meeting. Officers on the committee are Pearson, M. P. Cady, W. C. Christensen and R. R. Easter. F. L. Harlow, president of the association, will be in charge of the meeting.

Rules of the nut exhibit state that competition will be open to all, that each plate exhibit should have a least 25 nuts, that all exhibits should be shipped or mailed to care of Hillsboro chamber of commerce, and that all exhibits must be received prior to noon on the first day, December 4.

Features of the first day will be a banquet of the Western Nut Growers' association with the general public invited. Tickets for the turkey dinner will be 65 cents. The premium list follows:

**Best General Exhibit**  
First prize \$5, Commercial National bank, Hillsboro.  
**Walnuts**  
Best Exhibit of Franquettes—1st prize \$3, 2nd prize \$2—1st National Bank of Portland, Hillsboro Branch.

Best Exhibit of Mayettes—1st prize \$3, 2nd prize \$2—The Hillsboro Argus.  
Best New Seedling Variety—1st prize \$3, 2nd prize \$2—Amacher's Market, Hillsboro.  
Best Miscellaneous Named Variety—1st prize \$3, 2nd prize \$2—Royal Soda Works, Hillsboro.

**Filberts**  
Best Barcelona—1st prize \$3, 2nd prize \$2—Wells Department Store, Hillsboro.  
Best DuChilly—1st prize \$3, 2nd prize \$2—Cady Motor Company, Hillsboro.  
Best Brixnut—1st prize \$3, 2nd prize \$2—J. C. Penny Store, Hillsboro.

**Chestnuts**  
Best Chestnut Collection—1st prize \$2.50—Palm Drug Store, Hillsboro.  
**Uses of Nut Meats**  
(Either Filberts or Walnuts)  
Best Candy—1st prize \$5, 2nd prize \$3, 3rd prize \$2—Hudson, Duncan & Company, Wholesale Grocers.

Best Pastry—1st prize \$5, 2nd prize \$4, 3rd prize \$2—North Park Nut Growers.  
Best Nut Bread—1st prize \$5—Oregon Nut Growers, Newberg; 2nd prize \$3—Hillsboro Pharmacy, Hillsboro; 3rd prize \$2—Fairway Market, Hillsboro.

Best Sandwich Bread—1st prize \$3—MacKenzie Motor Company, Hillsboro; 2nd prize \$2—MacKenzie Motor Company, Hillsboro; 3rd prize \$2—Lester Ireland & Company, Hillsboro.  
Meat Substitutes—1st prize \$3, 2nd prize \$2—Selfridge Furniture Company.

**Other Nut Food Preparations, pies, etc.**—1st prize \$3, 2nd prize \$2—Sproule-Reitz Co., Hillsboro.  
Best General Nut Foods Exhibit, 1st prize \$5—Commercial National bank, Hillsboro.

Written recipes are to accompany all entries. The recipes will become the property of the Western Nut Growers' association and are to be used in encouraging the use of Oregon nuts and nut meats. State if filberts can be interchanged with walnuts and vice versa in these recipes.

It is erroneous to suppose that the German people under their totalitarian government are allowed as liberties whatsoever. For instance, they are allowed the liberty, when writing to their relatives in America, to say that they hardly know a war is going on.

### TOO LATE TO CLASSIFY ADS

Classified Page Deadline . . . . . Tuesday Night  
"Too Late to Classify" Deadline . . . . . 1 p. m. Wednesday

30 PIGS weighing 50 to 60 pounds. Also 2 brood sows, farrow in March—Emil Trachsel, 2 miles N. Huber on Walker road. 35p

TRADE FOR WOOD or sell for \$10. Table model cream separator, perfect condition—Call Saturday or Sunday, 626 East Baseline, Hillsboro. 35p

CREAM SEPARATOR \$10. Daventry \$3—L. K. Fiske, Corvallis. 36p

26 DUROC FEEDER PIGS at Ton-lue ranch, 2 miles west of North Plains—Charles Roff, Rt. 1, Corvallis. 35-36

FOR RENT—Furnished 4-room apt., clean, and desirable for adults. Garage—G. W. Hagle, 345 S. 6th Ave. Phone 1982. 35f

Card of Thanks  
FOR ALL the kindness and sympathy shown us in our recent bereavement, and for the many floral offerings, we wish to express our sincere gratitude—Chalmers and Hiatt families. 35p

**DR. BROWN CREDIT DENTIST**  
YOUR WORK COMPLETED NOW! Pay Later—Weekly or Monthly at Your Convenience.  
PLATES - EXTRACTIONS FILLINGS - BRIDGEWORK CROWNS  
YOUR CREDIT IS GOOD  
NO MATTER WHERE YOU LIVE!  
No Interest! No Brokerage! No Extra Charge!  
ASK YOUR DENTIST TO SHOW YOU THE NEW TRANSPARENT PALATE PLATES  
Natural Appearing - Dainty - Sanitary - Light  
Commercial Bldg., Hillsboro Phone 61

### Coat of Oatmeal Tweed for Fall



This smart fall coat of oatmeal tweed, flared with brown, has a sailor collar of natural beaver and brown suede belt threaded through strips of the coat fabric. It's worn by Brenda Marshall of the films.

### Whoozinit

(Not necessarily news)  
Harley Smith and John Cox celebrating birthdays . . . . . Latic Bush of Forest Grove singing the Hillsboro song . . . . . A Hoffman talking about Stanford offense . . . . . Palmer Torvond recalling his football days . . . . . Jack Seary and Bill Cyrus, telling each other about their good shots in the shower room.

John Come! kidding . . . . . Helen Halm and Velma Gallup looking up Hill history . . . . . Ernest Wilfert looking up furnace in the cold . . . . . Johnnie Green turning on lights in restaurant . . . . . A. J. Foraker "posing as refugee" and asking for cup of coffee . . . . . Pete Schukari cleaning ducks.

Jim Imbrie talking about football . . . . . Judge Kerkman tasting chury to the judges . . . . . Joe Hughes and Birdlyn Matteson looking for a bill . . . . . Joe Stretcher discussing points of election . . . . . Harold Haaland and Sandy Camp looking at pictures . . . . . Jim Miller taking a chance . . . . . Edwin Sahn and Theo Geertzen looking at a house.

Bill Bergen was understood to say that the man who invented the "self-starter" for automobiles was a "crank" . . . . . Dorothy Challacombe dodging a mouse . . . . . Bob Busch kidding casting doubt on the "mental balance" of anyone who invents something . . . . . H. L. MacKenzie displaying a miniature sweater for a hitch-hiker's thumb . . . . . Keith Wilcox with a handful of dough . . . . . Carl Fishback blinking at flash cameras . . . . . Bob Kalkwarf having a re-birth of "beginner's luck" . . . . . Keith Fenner ditto . . . . . Leon Davis being greeted as a Hillsboro visitor . . . . . Bob Corrieri "slashing" the price on a pair of tires . . . . . Lois Herzog covering a spot on her dress . . . . . Wilford Verboort missing a step at the Argus . . . . . Karl Wildman showing his invention . . . . . W. V. Bergen taking a bow for his highly way reflector invention . . . . . R. W. Weil, W. G. Hare, Fred Amacher and Herb Staples leaving to play pinocle . . . . . Blue and pink "flannels" are recommended by Newman and Bus Powers for those snappy mornings . . . . . Dorothy

LOST—White Collie pup—J. W. Dierickx, Phone 3392. 35p

2 SWISS HEIFERS for sale. — R. N. Shearer, North Plains. 35

CULL POTATOES, corn or squash wanted for stock feed. Write Albert Kehrl, Rt. 2, Beaverton. 35

WORK HORSE for sale. \$10—Fred Northrup, Shadybrook. 35p

LARGE CHESTER WHITE SOW with 9 pigs, \$25 if taken at once—George Hill, 3 miles N. E. Jackson school. 35

For Sale Accordion  
120 bass Hohner in good condition. Used only by teacher. With or without lessons. Sell cheap for cash—425 N. W. 22nd Ave., Portland. BE 0795 Sunday only. 35p

APARTMENT for rent, furnished or unfurnished, upstairs or down. One, two or three rooms—133 E. Walnut. 35f

EXPERIENCED HOUSEKEEPER. Must be neat—Call Portland Beacon 0731. 35p

**COOL SUN LIGHT**  
Where and When You Want It with  
**FLUORESCENT LIGHTS**  
Better Light Lower Cost  
The perfect light for office, factory, store, etc. Some fixtures ready to plug in with no new wiring. Let us give you a demonstration.  
**Goodman's Hardware**  
Hardware - Sporting Goods  
128 S. 2nd, Hillsboro Ph. 72

### Viking, Spartan Grid Rosters

HILLSBORO			FOREST GROVE		
No.	Name	Position	No.	Name	Position
*1	Ed Wells, F	11	Douglas Knight, G		
2	Wayne Shearer, T	12	Bob Mann, G		
3	Bill Miller, C	13	Laurie LaVoie, Q		
*4	Joe Sticka, G	14	Jack Chapman, Q		
6	Ken Wortman, Q	*15	Gerald Hancock, H		
9	Yoshio Inahara, H	16	Frank Hoch, H		
10	Bob Halvorson, G	17	Ed Brabham, C		
*12	Bill Troutman, E	*18	Bill Brabham, G		
14	Harvey Johnson, G	19	R. Vandervelden, H		
16	Bob Coats, H	20	Monte Keys, F		
*17	Bob Furrow, E	21	Lester Warner, F		
18	Norm Stunkard, E	*22	Earl Lockett, H		
*21	LeRoy Campbell, T	23	Bill McRobert, E		
22	Ray Meltebecke, G	24	Harold Bond, E		
*23	Erwin Olsen, T	25	H. Rockwood, T		
24	Vic Bruja, G	*26	Bud Greene, F		
25	Vay Hartzell, F	27	Lowell Devine, E		
*26	Wallace Ramp, Q	28	Bud Smith, T		
27	Fred Plass, G	*29	C. Oppenlander, E		
*28	Marvin VanLoo, G	*30	Jim Davis, G		
*29	Ike Tsugawa, H	*31	Ad Cathcart, T		
*30	Aubrey VanLoo, H	*32	Jim Hudson, T		
*31	Dave Cooper, C	*33	Bill Hamelman, C		
	* Starting lineup	*34	Marvin Hermans, E		
			* Starting lineup		

### Slugs Damaging County Crops; Cyrus Prescribes Poison Bait

(By W. F. Cyrus, County Agent)  
Slugs are damaging Washington county crops at this time. Vetch, peas, and young clover have shown the effects of slug work. In some spots the damage has been severe. One or two fields of hairy vetch have been noted where the entire field has been worked on and in a few instances the stand that was apparent ten days ago has virtually disappeared. This slug is the gray garden slug that sometimes attacks early seeded vegetables in the home garden and that sometimes works in early seeded spring field crops.

Baiting the fields in which the slugs are working will apparently accomplish control. The Oregon experiment station conducted some experimental poisoning work in Clackamas county recently and reported practically 100 per cent control using a poison bait made of bran and methaldehyde. There are commercial baits on the market but any bait that is used should have the methaldehyde in it as the poisoning agent. Numerous tests with a variety of poisons has, up to date, shown definitely that the methaldehyde is probably the one poison that can be depended upon for most effective control.

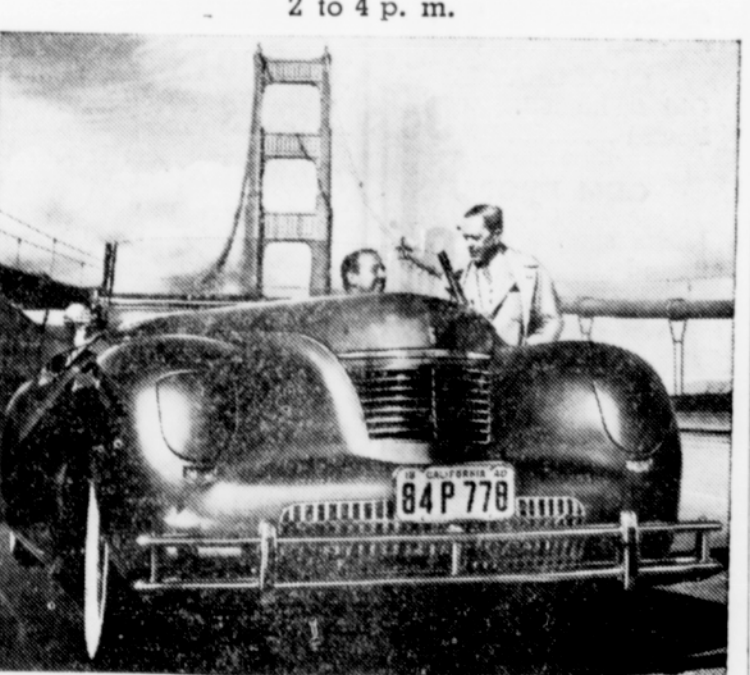
**Application Important**  
Application of the bait may be made by dropping it in small piles a few feet apart. The experiment station in some of their work broadcast the poisoned bait. When we are having unfavorable weather conditions, probably the bait will retain its effectiveness over a longer period of time if it is applied in little piles. These slugs feed at night.

Consequently, it is desirable that the bait be applied during the day. The present situation probably does not warrant general baiting of vetch and pea fields. Some fields show almost no infestation and some other fields show only an infestation in some parts of the field. Where there are numerous slugs but where they are confined to a rather limited part or parts of a field, it may be to the growers' advantage to obtain sufficient poison to bait that part of the field ahead of where the slugs are working to prevent their spread to more of the field. In some fields they are scattered practically all over the area and because of the damage they are doing it may be advisable to bait the entire thing. Ten to 15 pounds of the bait per acre is adequate for control if it is properly applied.

Entomologists state that if the ground freezes to a depth of perhaps two inches they believe the slugs will be killed. Growers real-

### DON'T FORGET To See the Chrysler Newport Here Today "The Car of the Future"

WEDNESDAY, NOVEMBER 20  
2 to 4 p. m.



Creating a sensation wherever it has been shown, the aerodynamically styled Chrysler Newport model will be on display here today, Wednesday, November 20, from 2 to 4 p. m., according to Tom and Jerry Spencer, local Chrysler-Plymouth dealers.  
**SPENCER MOTOR CO.**  
Plymouth and Chrysler Sales and Service  
227 S. Third Ave. Hillsboro Phone 751

### SOCKO THE SEADOG

LISTEN SNOOGY, YOU WATCH MRS. PLATT'S LITTLE BOY WHILE SOCKO AND I WASH THE DISHES  
I'M DONE, SWEETIE!  
GOOD HEAVENS!  
YOU SHOULDN'T LET THE BABY PLAY WITH MONEY. DON'T YOU KNOW THAT MONEY HAS GERMS ON IT?  
DON'T BE SILLY! A GERM COULDN'T LIVE ON MY SALARY!

with interment in the Phillips cemetery. Surviving are her husband, Henry, Hillsboro; one son, Carl Nitchman, Hillsboro route 3; three daughters, Mrs. Anna Stauss, Hillsboro route 3; Mrs. Emma Kort, Salem; and Mrs. Bertha Westpickett, Hollywood, Cal.; 11 grandchildren and two great grandchildren.  
Mrs. Tober was born on September 11, 1869, in Russia. She came to the United States in 1907 and to Hillsboro two years later.

### Salem Man Killed In Bomber Crash

Ralph Waldo Barnes, Salem boy who became an ace foreign correspondent, was killed when a British bomber in which he was flying crashed on Yugoslavian soil. It has been reported to the state department at Washington, D. C. He was engaged in covering the Italian-Greek warfare.

Germans claim the sinking of 51,229 tons of English shipping Monday and Monday night.

### Celebrate Wedding Anniversary Sunday

A delightful surprise was given Mr. and Mrs. James Hays Sunday on their thirty-fifth wedding anniversary at their home near West Union. A pot-luck dinner was served at noon.

Those present were Messrs. and Mesdames Si. Simonson, Ed Puyheart, H. R. Stratton and daughter, William Daly and sons, Miss Gloria Simonson, Miss Jean Meeuwsen, Russell and Verle Hays, and the honored couple, Mr. and Mrs. James Hays.

### Thanksgiving Super Creamed ICE CREAM

LOG ROLLS Quart 45c Pint 25c  
Rich Vanilla Ice Cream rolled in Macaroons and Nuts. Quart serves eight.  
SPECIAL—Cranberry Sherbert in Bulk  
We will be open all day Thanksgiving for your convenience.  
**NIB'S SHAKE SHOP**  
Mr. and Mrs. "Al" Nordquist, Props.  
Phone 854 HILLSBORO 218 E. Main

# A Warm Friend In a Cold World

**Town-Clad OVERCOATS \$19.75**  
Town-Clads take the snap right out of frigid weather with their deep, thick, fleecy fabrics and snug, comfortable feel!  
You'll be proud, too, of the distinctive sensation of owning a Town-Clad.  
The handsome cut, the perfect fit, and the up-to-the-second styling are essential parts of Town-Clads!  
\*Reg. U. S. Pat. Off.

# PENNEY'S

J. C. PENNEY CO., INC.

By Teddy  
YOUR WORK COMPLETED NOW! Pay Later—Weekly or Monthly at Your Convenience.  
PLATES - EXTRACTIONS FILLINGS - BRIDGEWORK CROWNS  
YOUR CREDIT IS GOOD  
NO MATTER WHERE YOU LIVE!  
No Interest! No Brokerage! No Extra Charge!  
ASK YOUR DENTIST TO SHOW YOU THE NEW TRANSPARENT PALATE PLATES  
Natural Appearing - Dainty - Sanitary - Light  
Commercial Bldg., Hillsboro Phone 61