

Commercial National's 'Open House' Scheduled Saturday

Hillsboro Bank Sets Program for Opening

More than two months of extensive remodeling work will be shown to the general public for the first time in completed form Saturday afternoon when the Hillsboro Commercial National bank's new quarters will be displayed at an "open house." Hours set for the bank's grand opening are from 3 p. m. until 10 p. m.

Ralph R. Easter, member of the bank's board of directors, is in charge of arrangements for the program, to which all bank patrons and others are cordially invited. Announcements have been mailed out to a large number of guests, Easter said.

All Officers Present
All bank officers and employees will be on hand Saturday to greet friends and bank patrons, and to show them through the new quarters, which have been completely changed from the old set-up used for many years. Music will be furnished throughout the day with radio phonographs supplied by local dealers, Easter said. Bank officers who will be on hand at the opening will be W. C. Christensen, president; M. P. Cady, vice-president; J. L. Searcy, cashier; R. R. Easter, Lester Ireland, H. E. Maling and H. A. Kuratli, members of the board of directors.

Deposits Doubled
Figures for 1937 on business done by the Commercial National were released this week by J. L. Searcy, cashier, and reveal that total business has more than doubled in the last five-year period. Deposits for 1937 reached the figure of \$1,727,445.91, while total resources were set at \$1,379,541.60. The 1933 figures showed \$826,940.06 as deposits and \$1,007,382.95 as resources.

"This rapid growth in the bank's business, with deposits more than doubling over this short period of time, made necessary the changes we have just completed," bank officials said. "With our greatly enlarged and modernized quarters we will be able to extend even better service than in the past."

Roy Ladies Hold Card Party Tonight
(By Miss Agnes Vanderzanden)
ROY—Ladies of Roy are sponsoring a card party in the Roy hall tonight (Thursday). Everyone is invited.

Margaret Duyck, who is attending a beauty school in Spokane, spent the past week with her parents, Mr. and Mrs. Emil Duyck.

Mr. and Mrs. Dallas Cook of San Jose, Cal., were guests at the home of Mr. and Mrs. Archie Jesse December 29.

A large crowd attended the hard-time dance given by the Roy Sodality Thursday evening at Moore's hall. The music was furnished by Vandey's orchestra.

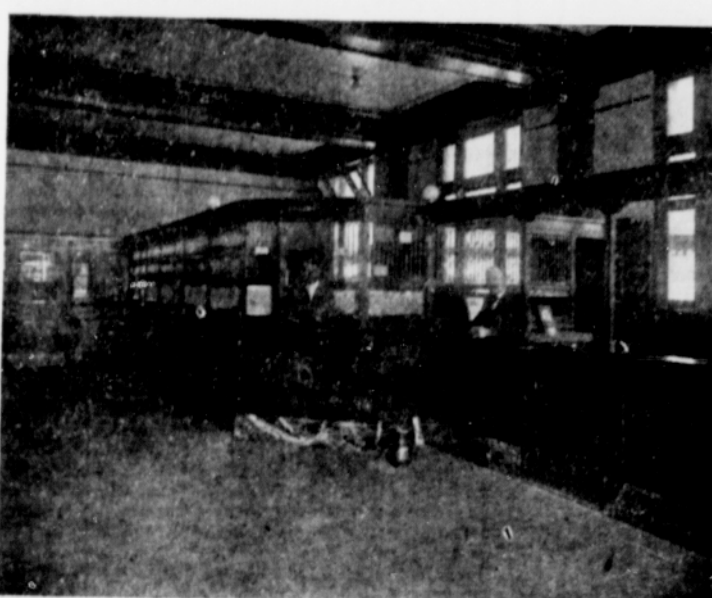
Born to Mr. and Mrs. Edwin Jesse, a girl, January 1.

Clarence and Raymond Vanderzanden left Sunday for Spokane, Wash., to attend Gonzaga university. Cecil Hare of Sheridan spent Saturday night at the J. M. Vanderzanden home and also returned to Spokane.

Miss Leona Hess, who has been employed in Hillsboro, returned to her home Saturday.

Mr. and Mrs. Floyd Spooner and family of McMinnville spent the week-end visiting relatives in Roy.

Bank's Modern Interior—in 1912



Back in 1912 the bank interior pictured above was the "last word." It shows the lobby of the Hillsboro National bank, merged with Commercial bank to become the Commercial National, which has just been completely renovated to give the county one of the most up-to-date banks in the entire northwest. Shown in the picture are (left) David Kuratli, cashier, and the late W. H. Wehrung, president.

Short History of Local Banking Given by Veteran Bank Worker

Banking in Hillsboro dates back to 1888, just half a century when the First National Bank of Hillsboro was born, it was learned yesterday from Cal Jack, Jr., assistant cashier at the Hillsboro Commercial National bank and oldest in point of service in banking throughout the county.

The First National Bank of Hillsboro was also the first bank in Washington county, Jack said, and was organized by the late J. W. Shute and his associates, including J. D. Merryman, cashier; R. H. Walker, J. H. Foose and Zina Wood, directors. Wood is the only surviving member of that original banking group, having retired from active farming and taken up his residence in Hillsboro. Others associated with the first bank were Dr. F. A. Bailey, John Morgan and W. E. Brock.

After several years of operation, Shute and John H. Foose bought out all other stockholders' interest and liquidated the bank, re-organizing as Shute and Foose, Bankers. The First National Bank had operated under national banking laws, but the Shute and Foose bank depended upon private initiative and honesty, since there was no state banking department at the time. Both Shute and Foose owned much property in Washington county at the time, however, and conducted the bank along secure lines.

Shute Takes Control
For several years, Hillsboro's bank ran under that name until Shute bought out Foose's interest. He retained his post as bank president, with his son, A. C. Shute, becoming cashier. The new bank name was J. W. Shute, Banker, under which it operated for another dozen years. It was about 1910, Mr. Jack recalled, that A. C. Shute bought out his father's interest in the financial institution and re-organized the same as the Shute Savings Bank. At the same time he organized the American National Bank of Hillsboro. Stock in both banks was held by the same stockholders, and officers in both were the same men. After several years the two were consolidated under the name of Shute Savings Bank. Prior to A. C. Shute's assumption of bank direction, all the banks had been located on Main street at the present site of the Venetian theatre. In 1910, Shute moved his bank to the southwest corner of Third and Main streets.

The Shute bank operated in Hillsboro until 1933, when it was closed by the state banking department in the wave of bank closings that swept the entire nation about that time. Assets of the old bank were purchased by the First National Bank of Portland, which opened its Hillsboro branch at the same location soon after. Russell Tidale is present manager of the branch.

In 1904, a second bank made its appearance in Hillsboro with the formation of the Commercial bank, organized by a group headed by A. S. Sholes and Ed Schulmerich. Sholes became president, with Ed Schulmerich as vice-president and George Schulmerich as cashier. On

Remember the more you tell, the more you sell when using Argus Want Ads.

Bank Building Now County's Most Modern

(By Ed O'Meara)
Inspection of the new quarters of Hillsboro's Commercial National bank reveals sweeping changes that have resulted in a completely different and new building.

Entire remodeling and equipment-designing operations for the bank were handled by the P. T. Ainge corporation of Portland, a company which has made specialty work of bank buildings and equipment for the past 25 years. Edward Schulmerich, late president of the bank, began conferences with the designers eight months ago regarding the changes, which were carried on after his death.

Main Lobby Enlarged
The main banking room is 24 feet wide and 70 feet long, or almost double the former lobby space. Interior treatment of the room is done with modern simplicity, with floors of tiletex in a black and gray color combination in the main lobby and black and brown throughout the working space. Bank fixtures are of walnut in a lime-rock gray finish trimmed with black micarta base and ledge and set off with ebony mouldings.

Number of windows in the bank has been almost doubled, with four paying and receiving windows, a statement window and a note window replacing the three formerly used. This assures quicker handling of business for all bank patrons, it was declared. At the front of the building, in extra space provided through the changes, is the private office of bank officials, and another partially enclosed office for use of the complete inside changes. Designers have been drawn which contemplate the complete modernization of the outside, it was announced, and work on this section of the renovation project will probably be started later this year.

Two Vaults Used
Two new vaults have been installed at the extreme rear of the building, replacing the single vault formerly used. Space saved by moving vaults back has been utilized in the lobby enlargement. One large vault will be used for bank records and supplies, while the other will be used for safety deposit boxes and coin and securities storage. An eight-ton steel door, operated by a time lock, opens into the vaults.

Both vaults are absolutely impregnable, it was declared. The big corner and largest deposit vault is of the largest design, and is 22 feet long and 11 feet wide. Walls, floor and ceiling are 18 inches thick, of solid steel-reinforced concrete. A special customers' lobby is provided just outside the vault, which is set at a lower level than the bank proper. The small lobby is equipped with three coupon booths for use of customers.

Bank counters are of the new low modern type, and are so designed as to permit carrying on of all phases of banking with ease to both customers and bank workers. The lobby is equipped with two large check desks, a settee and a customer's writing desk, all finished in the same walnut lime-gray.

Lighting Scheme Noted
One of the outstanding features of the main banking room is the type of modern lighting fixtures used throughout. The entire quarters have new fixtures, including fixtures for officers' desks, check desks, and coupon booths, as well as the three main ceiling chandeliers.

Above the vaults at the rear of the bank is the mezzanine floor, with a new office for the bank's board of directors, a large meeting room and two rest rooms.

P. T. Ainge corporation has to its credit over 125 bank buildings throughout the northwest, and brought expert direction to remodeling of the Hillsboro bank.

Bank Remodeling First Planned by Late Directors of Institution

Opening of the brand new quarters of the Hillsboro Commercial National bank Saturday afternoon will climax plans for the sweeping \$14,000 remodeling project giving Hillsboro one of the most attractive banks in the state, which were conceived some time ago by the late Edward C. Schulmerich, president, and Emil Kuratli, vice-president, both of whom died last June.

Speaking of co-operation given by local firms, P. T. Ainge, head of the firm, said "Our instructions were to let all work possible to Hillsboro people and it is to the credit of the building trades of Hillsboro that we were able to do practically all the work with local labor and materials."

Bruce C. Schulmerich, son of the late bank president, acted as local superintendent for the Ainge company during the construction work, in addition to handling wiring, plumbing and heating arrangements.

Due to the fact that it was late in the fall before work on the bank interior could be started, it was decided some time ago not to make any structural changes on the building's exterior for some time, other than what was necessary to effect the complete inside changes. Designs have been drawn which contemplate the complete modernization of the outside, it was announced, and work on this section of the renovation project will probably be started later this year.

ich serving eight years in the Oregon state legislature, four as representative and four as senator. Death came to the two men early in June of 1937. Mr. Kuratli dying on June 5 and Mr. Schulmerich nine days later on June 14. They left behind them one of the strongest financial institutions in the northwest as a monument to their hard work and business sagacity.

Christensen Here in 1925
W. C. "Bill" Christensen, new president of the Commercial National, is a former University of Washington student and began his career as bank manager with the Sherwood bank in 1922, where he remained for a year and a half. The following few years were spent with the state banking department as liquidator. He came to the old Hillsboro Commercial bank in 1925, where he served as cashier for a

short time under Schulmerich. At the time of the 1927 merger he was vice-president of the Commercial bank and was then named cashier of the new institution.

Six years ago Mr. Christensen was chosen vice-president of the Commercial National and held that position until he was named president of the institution early last summer. He is an ex-service man, having served in the army as a sergeant during the world war. At present he is secretary and a member of the board of directors of the Independent Bankers Association of the Twelfth Federal Reserve district, embracing the entire Pacific Coast. He also serves on the taxation committee of the Oregon State Bankers association. To him fell the task of carrying out the work outlined by Mr. Schulmerich and Mr. Kuratli.

Best Wishes to the
COMMERCIAL NATIONAL BANK
A. L. Amacher
Certified Public Accountant
Room 1 HILLSBORO Wells Bldg.

We Congratulate the
Commercial National Bank
on the opening of its new, modern banking quarters. We wish our neighbor every success.
FAIRWAY MARKET
Steel Filing Equipment
FOR THE
Commercial National Bank
Furnished by
Art Metal Construction Co.
Oregon Agents

West Coast Printing and Binding Company
1324 W. Burnside St., Portland
BEST WISHES
to the
Commercial National Bank

PLASTERING done by
Oscar Jacobs
Route 1 Cornelius, Ore.

BEST WISHES ----
to the
Commercial National Bank
Tiletex Floor
installed by
WILEY & SMITH
2663 S. E. Grand Ave., Portland, Oregon
Phone SEllwood 0202

CONGRATULATIONS ----
to the
Commercial National Bank
Furnished by
V. M. PILIP, Inc.
General Painting and Decorating Contractors
Portland, Oregon
681-687 N. Tillamook St. Phone TRinity 0082
We are pleased to have done the decorating on the Commercial National Bank.

Congratulations!
Commercial National Bank
We're proud that your handsome structure boasts
Bunnett Venetian Blinds
—Artistic
—Efficient
—Economical
Rt. 9, Box 564, Portland

The P. T. AINGE Corp.
1233 S. W. Sixteenth Avenue
Portland, Oregon
Designers and Contractors
of the Remodeling
Wish to Extend to the
Commercial National Bank
its President, Board of Directors and Staff—congratulations and thanks for their courteous and patient co-operation during this operation.

MacKenzie Motor Co.
Congratulates the Officers and Directors of the
Commercial National Bank
upon their progressiveness in modernizing and bringing up-to-date the bank in Oregon.
Modern Sign Service
SIGNS OF ALL KINDS
657 N. Tillamook St., Portland Phone BEacon 6478

PLUMBING
ELECTRICAL FIXTURES
HEATING
for the
Commercial National Bank
installed by
B. C. Schulmerich
GENERAL CONTRACTOR
462 E. Jackson St. HILLSBORO Phone 734

WE ARE HAPPY TO CONGRATULATE the Officers and Directors of the
Commercial National Bank
upon the modern, up-to-date bank building, which they now offer for the convenience of Washington County residents.
Hillsboro Argus