

Commercial National Bank of Hillsboro, Oregon

Announces the Opening of Its New Banking Quarters

To which its Depositors, Clients and Friends are invited Saturday, Jan. 8 - 3 to 10 p.m.



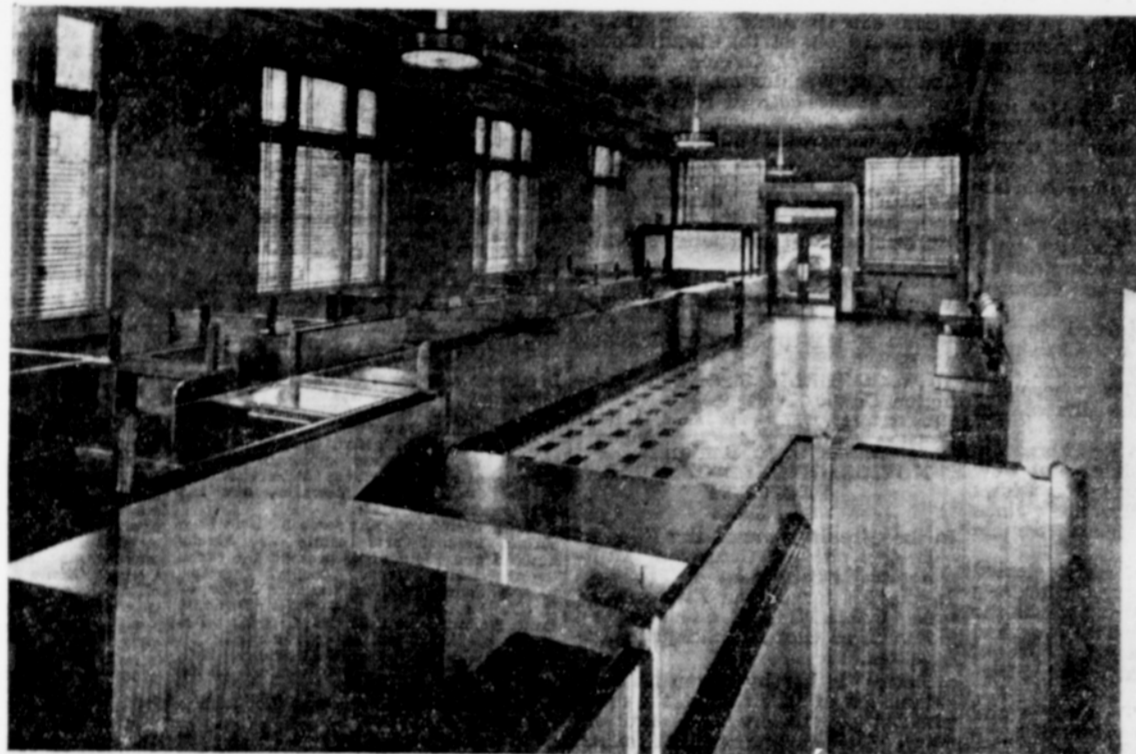
W. C. Christensen
President



M. P. Cady
Vice-President



J. L. Searcy
Cashier - Secretary



Washington County's Most
Modern Bank Building...

THAT HAS been the objective of the Commercial National Bank officers and directors during the planning and process of remodeling. Now we invite you—who have made these improvements possible—to see how we have realized our objective.

New modern fixtures . . . new pleasing interior . . . new conveniences for patrons . . . new, spacious vaults! We offer them for your use with pride and satisfaction.



R. R. Easter
Director



Earle Bowman
Assistant Cashier

New, Modern Plant!
Old, Friendly Service!

THE OLD, friendly, "personalized" Commercial National service is still here—in spite of new surroundings. The familiar friends and neighbors who have served you in the past are still here to greet and counsel with you.

Your confidence in us is indicated by the fact that our bank business has more than doubled in the past five years. We show our appreciation of your trust by offering you this new, modern banking plant.



B. E. Maling
Director



Cal Jack Jr.
Assistant Cashier

Steady Bank Gains

That Made New Quarters Necessary!

	Deposits	Resources
December 31, 1933	\$ 826,940.06	\$1,007,382.95
December 31, 1934	1,159,637.15	1,288,580.44
December 31, 1935	1,349,960.83	1,459,076.74
December 31, 1936	1,598,344.67	1,720,204.62
December 31, 1937	1,727,445.01	1,870,541.60

"Personalized Services"

Available for Your Convenience

- Savings Accounts
- Checking Accounts
- Personal Loans
- Auto Loans
- Escrows - Collections
- Safe Deposit Boxes
- Money Orders - Drafts
- Travelers' Checks



Lester Ireland
Director



W. V. Bergen
Assistant Cashier



Clyde Yount
Assistant Cashier



Miss Florence Bunger; Miss Augusta Sigler, teller; Miss Ruth Dyke; Miss Gloria Coulter; and Miss Blanche McCormick



A. H. Abts
Field Representative



H. A. Kuratli
Director

"A Washington County Institution - - Home-Owned by Local Home Owners"

MEMBER FEDERAL DEPOSIT INSURANCE CORPORATION