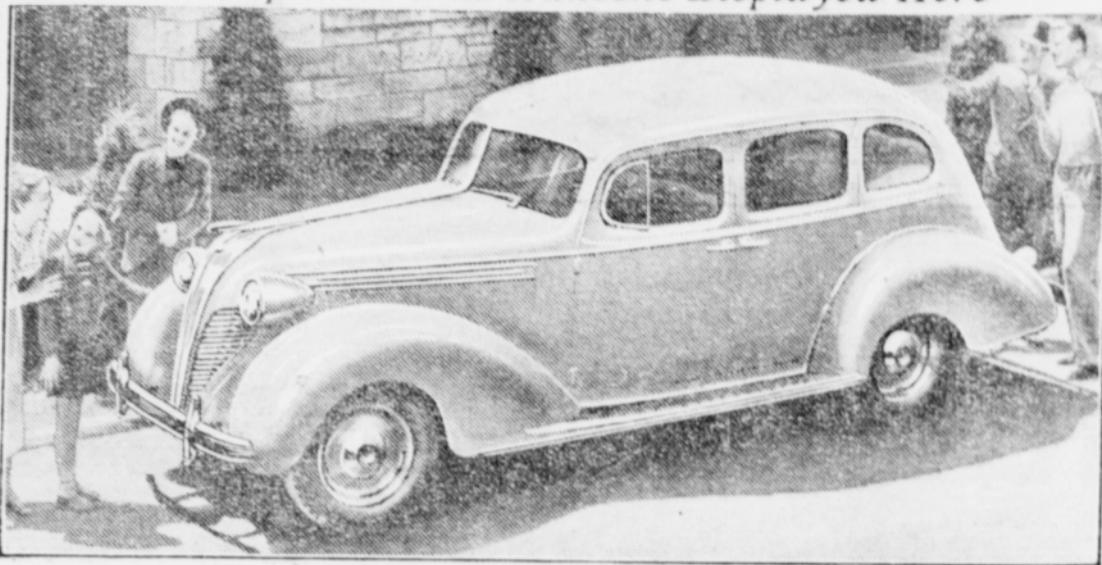


Terraplanes and Hudsons Displayed Here



Four completely new Hudson built cars, the 1937 Hudson eight, the Hudson six, the DeLuxe Terraplane, and a new companion car, the Super-Terraplane, are now on display at the showrooms of Thomas S. Sholes, Hudson and Terraplane dealer.

Strikingly styled in the most advanced trend, the new cars are longer at the wheelbase by two inches, lower by two inches, wider, roomier and more powerful than preceding models. Characteristically sleek, the lines of the '37 cars flow rearward from the newly designed narrow radiator grille in perfect harmony around an interior said to afford a new conception of roominess and comfort in motor cars.

The complete line of Hudsons consists of an 8-cylinder car on 129-inch wheelbase, an eight on 122-inch wheelbase, and a six on 122-inch wheelbase. Both of the 122-inch wheelbase basiss in the eight and the six carry a complete line of bodies, all of which are entirely new this year, while the 129-inch wheelbase chassis is available in two body models—the sedan and touring sedan.

Joining the DeLuxe Terraplane this year is a new Super-Terraplane of 101 horsepower featuring the new "Double Carburetion" principle, an engineering advancement introduced by Hudson for 1937. Both DeLuxe and Super-Terraplane carry a complete line of body models on 117-inch wheelbase as against 115 inches for 1936.

Brilliant new body colors feature both the new Hudsons and Terraplanes, a choice of seven being offered with five additional colors optional at slight extra cost.

Also stressed in the 1937 Hudsons and Terraplanes is a substantial increase in engine power and economy due to the introduction of "double carburetion." This new principle in combination with improved manifold results in greater breathing capacity for the engine and increased volumetric efficiency. As a further result of "double carburetion" the eight-cylinder motors develop 122 horsepower at 4200 r. p. m., as compared with 113 horsepower a year ago, and the six-cylinder engine develops 101 horsepower at 4000

r. p. m. as compared with 93 horsepower last year. In spite of this increase in power, an improvement of 110 per cent in gasoline economy has been obtained.

Particular emphasis has been placed by Hudson designers in the achieving of interior roominess. Lower by two inches than last year, with level floors, and slightly increased headroom, the new Hudsons and Terraplanes are also wider than last year, the front seat being roomier by five inches, measured at the cushions, providing 55 inches of seating room in the front seat. Seating is provided for six persons in all sedan models.

In the creation of new interior luxury for 1937 cars, Hudson designers have added numerous refinements in upholstery and trim. In the Terraplanes, upholstery material is a high quality Boucle, smartly tailored. In the new Hudsons, upholstery is of custom loom cloth in two shades, brown and grey.

The Duo-Automatic Hydraulic braking system, which was distinctive on Hudson-built cars last year, is continued on the 1937 Hudsons and Terraplanes. With this system, the hydraulic brake mechanism, which actuates the brakes on all four wheels in the usual manner, is backed up by a "double safety" feature consisting of a mechanical linkage which functions automatically from the same foot pedal if for any reason there should be a lack of fluid in the hydraulic system. In this emergency the mechanical brake takes hold on the two rear wheels and provides effective control of the car.

More massively rigid for 1937 to accommodate the longer, wider bodies, the new Hudson and Terraplane chassis has a new 2-X frame. The body is of one-piece steel construction, including seamless steel top and is fastened to the frame at 38 points in keeping with Hudson's long practice of engineering frame and body as a unit.

Trinity Lutheran Church

Public services are conducted at 10:30 a. m.; Sunday school at 9:45. Sermon topic, "David's Philosophy of Life."—Ps. 39, 6-7. For the "Lutheran Hour" tune in on KEX at 1:45 p. m. You are cordially welcomed to worship with us.

Attendance Large Mt. Home Supper

(By Mrs. Mable Allison)

MOUNTAIN HOME—More than two hundred were served at the annual supper sponsored by the Ladies' Aid at the church Friday evening. Just as the first group of people were to be served, the electric lights flickered a few times and went out and linemen did not get the repairs until the supper was about over. Oil lamps, and dozens of candles served to light

the dining room and one room upstairs. About \$70 was cleared.

Chehalem Mountain 4-H potato club will hold their annual potato banquet December 4.

Donald Schmeltzer, who has been farming in eastern Oregon, has been spending the past week with his parents here.

Mrs. Joe Ego lost control of her car Thursday evening, while returning from Portland, and turned it over on the sharp curve coming up the Sieffert road from Scholls. Mrs. Ego suffered minor bruises. They had to climb through the open window on the top side, but no glass was broken. This is the second time this car has been turned over since the Ego family purchased it a few months ago. Miss Ego was driving when it went over before.

P.-T. Club to Meet

Mountain Home Parent-Teacher club will meet at the school house Friday afternoon.

Mr. and Mrs. Clarence Nelson and family, who have been away harvesting apples, returned to their home here last Saturday evening. The boys, Edwin and Darrell, entered Mountain Home school Monday.

Mrs. Edward Aebischer and baby son have returned to their home in the Laurel Ridge district.

Helvetia Woman Wins

Mrs. S. Hershey of Helvetia won eleventh place in Oregon in the Safeway coffee contest just closed. Hillsboro Safeway store announced this week. The award was \$25.

Our classified columns may have just what you are looking for—Read them.



How to Buy Your New Car

1. Select your car — any one of the many beautiful new 1937 models.
2. Have the dealer appraise your present automobile.
3. See the Commercial National Bank

Auto Finance Department

and arrange for a loan to cover the unpaid balance on your automobile at

5 Per Cent Discount

No Brokerage—No Extra Costs Beyond Customary Insurance 12 or 18 Monthly Payments.

Commercial National Bank

Not connected with any branch bank, chain bank or holding corporation.

Hillsboro

Oregon

MEMBER FEDERAL DEPOSIT INSURANCE CORPORATION

YOUR NEW 1937 PONTIAC

IS HERE!

Sixes and Eights

NEW LOW PRICES

From \$898 up equipped — Delivered

- | | |
|----------------------|----------------------------|
| More Beauty | More Power |
| More Acceleration | More Room |
| Championship Economy | 170 and 120-inch Wheelbase |
| More Comfort | More Quality |
| More Trunk Space | |

Come in and Drive One!

"The Most Beautiful Thing on Wheels"

Anderson Motor Co.

HILLSBORO

Phone 1271

REMEMBER We Never Close

Our modern shop and service facilities are at your disposal 24 hours every day.—A competent mechanic day or night.—A modern body and wreck repair department. Standard Gasoline, Oils and Lubrication Service.



THOMAS S. SHOLES

137 S. Third Ave. — Hillsboro, Ore
The Home of 24-Hour Service



YOUNG'S Funeral Home

"Thoughtful, Sympathetic Service"

Phone 972

Hillsboro

ZENITH
America's Safest
AUTO RADIO

WITH THE **BIG BLACK Safety Dial**

Listen to this New Big Six-Tube Superheterodyne with features you can see, feel, hear, touch! Big Black Safety Dial. Softglow, non-glare lighting. Choice of Steering Wheel or Panel Controls to fit all cars. "Ear level" or self-contained Electro-Dynamic Travelspeakers—single or twin. Full revolving tone control. No spark plug suppressors needed.



Every Mile a Safe Mile with Zenith at the Wheel

EASY TERMS

De Luxe Six—This Big Six-Tube De Luxe Set with choice of De Luxe Safety Steering Post Control or Panel Control and enclosed speaker.

\$5 Down \$49.95
Terms to Suit

MELTEBEKE ELECTRIC STORE

"Saves You Money on Every Purchase."

Two Stores—Hillsboro and Aloha

FITS ANY CAR