

Vote May 15--  
Good Citizenship Demands  
All Qualified Vote at  
Every Election

# Hillsboro Argus

Read It!--  
Read "Honeymoon Mountain," a  
Delightful Love Story  
Starting This Week

Volume 43, No. 13

Hillsboro Independent Established

Hillsboro, Oregon, Thursday, May 14, 1936

Hillsboro Argus Established 1894

Two Sections, Fourteen Pages

## Board Sets New Lines for District

### New Sherwood School Forces Changes in Zoning of Non-High Area

### Need New Director

### Shifting Makes Vacancy in Sherwood Vicinity

Forced to re-zone the non-high school district because of the organization of the Sherwood union high school district this winter, the boundary board has completed the work, making several changes and establishing one new zone, according to a report released this week by O. B. Kraus, county superintendent of schools.

In the new set-up, zone one remains the same as during the last three years except that district 84, joint, was cut off and attached to the new zone. Change was not made in zone two.

### Zone Number Three Suffered Considerable change through the cutting off of several districts in the northern part of the zone and attaching three left-over districts from the original zone five. In zone four some of the northern districts were cut off and district 101, joint, attached.

### Zone five, newly created, was established from districts cut from zones three and four and the attaching of district district 84.

Two directors will be elected for the non-union district 15. The first is in zone three, where a director will be named to fill the vacancy left by the expiring term of A. M. Janssen, present chairman.

Only voters of Zone five will be allowed to vote on the election of a director for that zone and this is also true of other zones.

Blank petition forms for nomination of candidates for directors of the county school superintendent and such petition, before filed, must have not less than 30 signers and must be placed on file with the county superintendent on or before June 1.

Districts in each zone follow: Zone 1, 24, Baconia; 34, Scofield; 41, Mountaineer; 43, Shady Brook; 51, Meacham; 59, Arcadia; 61, Walling; 68, Pleasant View; 72, Bayley; 76, Mead; 87, Woodland; 98, Bailey; 102, Strassel; 111-J, Wheeler; 112, Buck Mountain.

## Jersey Cattle Club to Meet

### Picnic, Dairy Show Planned Annual May Event

The Washington County Jersey Cattle club is holding a dairy show in conjunction with its annual picnic May 25 at the D. G. Lilly farm in the Hillsboro community, according to D. G. Lilly, chairman of the program committee. The picnic will be a luncheon affair with ice cream and coffee furnished by the club. Every one is urged to bring a well-filled basket and their own table service.

The show will be put on by the (Continued on page 5, column 2)

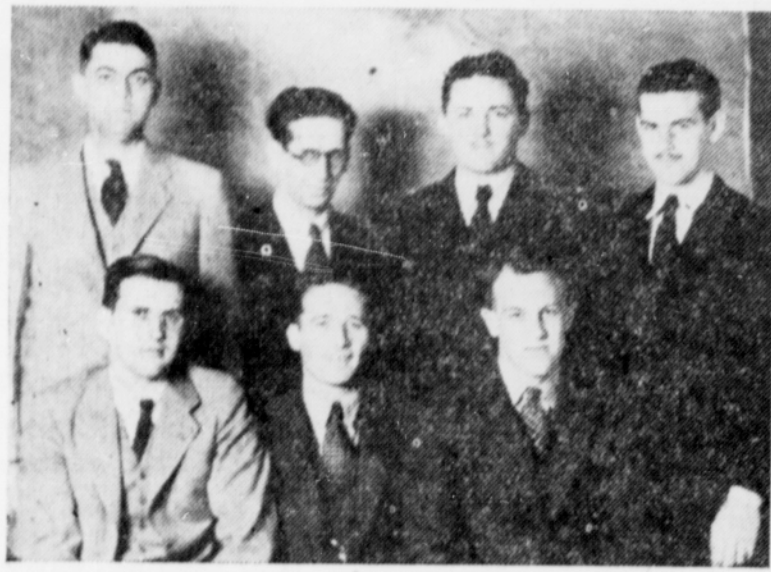
## Ray-Maling Operations Show Loss; Name Heads

Operations loss for the year ending March 31, 1936, was reported at the annual stockholders' meeting of the Ray-Maling cannery at the general offices here Tuesday night. No dividends were declared. Deficit on that date including deficit as of March 31, 1935, of \$17,438.25 and additional federal income and state excise taxes of prior years of \$8192.90 and less excess of par value of treasury stock purchased over cost at \$767.74 made a total deficit of \$130,733.20. Losses were attributed particularly to conditions in apple and pear markets.

Chandler Brown of Salem was elected to the board of directors to fill the vacancy caused by the resignation of M. A. Covington. All other directors were elected and officers were named by the board as follows: B. E. Maling, president; Ed Schuler, vice-president; Arthur Brown, vice-president; and Chandler Brown, secretary-treasurer. Other members of the board are: C. F. Nookes of Salem, and R. W. Weill and H. W. Rife.

Ray-Maling operations in pack at the B. E. Maling, Inc., plant here, including the cold pack, was predicted by Maling, thus insuring market for local farm products.

## First Officers Young Men's Group



Hillsboro Breakfast club, a civic organization of young business and professional men, was formed locally last week. Officers of the group are (reading from left to right): Front row: Gene Roseman, secretary; Herbert Staples, president; James W. Wells, vice-president; Second row: Vern Casebeer, Kenneth Davidson, E. Lovellett, directors; and Ed Coman, treasurer. - Schramel Studio photo.

## Greater Civic Pride Needed Meeting Told

### Business Men to Hold Meet at Carnation Plant

Need of greater civic pride on the part of individuals in keeping up their lawns, yards and parking areas was stressed by women representing three service clubs of the community at the dinner meeting of the chamber of commerce Monday night. Mrs. E. Fayetta Allen represented the Business and Professional Women's club, Mrs. W. F. Cyrus the Garden club, and Mrs. J. M. Person the Coffee club. Program was arranged by J. L. Seagram, chairman.

Mrs. Allen held that the city needs more pride and less criticism, more co-operation and less friction, better street lighting, wider streets, swimming pool, zoning systems for the protection of residential districts, more civic pride on the part of individuals, more people to own their own homes, and more buying at home.

The great improvements that are being made at the Shute park were cited by Mrs. Cyrus. She urged the necessity of taking better care of parkings, lawns and vacant lots, particularly along the highway streets. Other needs pointed out were better lighting, more shade trees, play equipment and benches at the Bagley park on North Second avenue and an adequate rest room. She decried the practice of school children in throwing waste papers along the streets during the noon hour.

"We all have grand ideas, but we don't put them over," declared Mrs. Person. "We should back up our ideas with action."

Civic pride, a good zoning ordinance, swimming pool, community building for meetings, public tennis courts, public restrooms down town, interest on the part of all in efforts to improve, and need of a school building to replace the present Hill school are items which Mrs. Person declared that we should make Hillsboro a city of homes and good business.

Greater use of the city park when it is ready for public use after the (Continued on page 5, column 2)

## Health Clinic Called in Glenwood District

Another health meeting under the direction of Miss Margaret Dixon, county health nurse, will be held tonight, Thursday, at 7:30 in the Glenwood district, near 21st and Wood. Miss Dixon announced this week. Subject of discussion will be, "Isolation of Sick and Care of Persons with Communicable Disease."

A large attendance of women was reported at a previous meeting held some time ago.

Current assets were listed in the Ray-Maling balance sheet as follows: Inventories canned and cold packed goods, \$464,585.69; supplies, \$43,285.68; accounts and notes receivable, \$208,170.62 less \$11,361.55 reserve, \$196,809.07; inventories, \$276,709.62; cash surrender value of life insurance policies, assigned as collateral on debenture notes, \$22,000.00. Deferred charges including unexpired insurance premiums of \$16,000.00 and other prepaid expenses of \$3815.40 totals \$19,875.51.

Capital assets are: Land and land improvements, \$10,986.35; railroad sidings, \$4810.81; factory and warehouse buildings, \$140,515.39; machinery, equipment and fixtures, \$202,709.62; field equipment, \$19,525.91; tools, pans and trays, \$725.93; copyrights and label plates, \$2883.69. Reserve for depreciation on machinery is \$167,663.10, leaving total capital assets at \$221,001.66.

Current liabilities: Notes payable, \$396,085.61; accounts payable, \$151,408.53; accrued wages, \$1254.69; accrued property taxes, \$1144.77; and accrued interest payable, \$8634.71. Total \$558,528.31. Ten-year five per cent (Continued on page 7, column 1)

## Travel Bureau Preparing for Tourist Season

For those interested this summer in the Gypsy life of the open road, the Hillsboro chamber of commerce is prepared to furnish information, either for Oregon tours or for more extensive ones south, north or east, according to Ed L. Moore, secretary.

Tourist maps and beautifully illustrated literature on scenic spots in Oregon have arrived from the Oregon highway commission and all out-of-state drivers registering this summer at the travel bureau, maintained by the local chamber of commerce will be furnished the maps and pamphlets.

From other states, literature and maps are also arriving, or are already here, furnishing information of interest to persons in Oregon contemplating a summer drive through other states. All persons interested in such trips are urged to contact Moore for information regarding such trips.

The auto registrations which are in the chamber of commerce rooms for Washington county, allowed more than 220 state visitors to register last year and there is every indication that tourist traffic into the state will be greater this year than last.

In advertising scenic spots in Oregon, the highway commission has prepared a group of pictures and the necessary accompanying explanation on every phase of Oregon's vacation spots. The pictures include scenes from the beach, mountains, lakes, streams and forests, outlining a variety of vacations to suit any taste.

## Woods Strike Report Denied

### Everything Serene, Declare Stimson Officials

Although strike pickets at Stimson mill in Scoggins valley, stationed for nearly a year at the junction of Scoggins valley road and Pacific highway, were moved last week nearer the mill, the Stimson company is not having trouble with employees, the management announced this week.

According to a report received last week by the Argus from sources supposedly authentic, a number of the Stimson logging crew were said to have walked out in protest over some misunderstanding. This has been denied by officials of the Stimson company and the logging crew is still on the job in fact, according to Harold A. Miller, manager.

Stimson is reported as paying higher wages than in other logging camps, and all men employed are said to be well satisfied with conditions there.

"We have experienced no trouble or misunderstandings with our men and any report to the contrary is incorrect," Miller said this week in a statement to the Argus.

Loggers employed by Stimson have no connection with those timber workers now on strike in the Consolidated camp at Glenwood and so far as can be learned no attempt has been made recently by the union men of Consolidated to get Stimson men involved in the situation.

## Young Men Form New Civic Group

Hillsboro Breakfast club, a civic organization of young business and professional men between the ages of 21 and 35, was formed Thursday morning at Ely's Chateau. The club is the first of its kind in Hillsboro and has 35 charter members.

Herbert E. Staples, manager of the local Credit Bureau, Inc., was elected as the first president of the group. Other officers include James Wells, vice-president; Gene Roseman, secretary; Ed Coman, treasurer; Vern Casebeer, Ken Davison, and E. C. Lovellett, directors.

Typical breakfast club activities and programs are planned, according to Staples. The group will meet at breakfast each Thursday morning and a number of fellowship activities are slated for the spring and summer months. The club seeks to give the younger man's point of view an ample and permanent expression in the community.

## Health Group Asks County Medical Unit at Session of Grand Jury

### Association Would Sponsor Group to Work Full Time Here

### Re-Elect President Annual Dinner Attended by Many Monday Night

### Without a dissenting vote, the Washington county health association, Monday night, voted to sponsor a full time health unit in Washington county to include, in the beginning, a full time health officer, nurse and a part-time county physician.

The vote followed an explanation of county health units and cost by Dr. Vernon A. Douglas, Marion county health officer, who told of the problems met in Marion county and the success attained. The speaking followed the annual dinner in the attendance of the Christian church blessed by nearly 60 persons.

### Mrs. Marsh President

Mrs. Essex Marsh of Beaverton was re-elected president. Mrs. A. C. Johansen of Glenwood was first vice-president; Mrs. C. J. Sellican of Tigard, second vice-president; Rose Cave of Hillsboro, secretary for another term; Fred Engeldinger, Hillsboro, treasurer, and Mrs. L. B. Metzler of Beaverton, corresponding secretary.

Following the election Mrs. Marsh announced her committee chairmen for the year, which included: (Continued on page 5, column 3)

## Last Veteran of Civil War Dies Monday

### Held Here Wednesday

Francis S. Estep, 91, Hillsboro's last surviving Civil War veteran, died at the family home on Scott Third avenue Monday afternoon, following an illness of two weeks. Funeral services were held Wednesday afternoon from the Donelson & Sewell chapel, with Rev. H. A. Deek officiating. Military burial arrangements at the cemetery were in charge of the American Legion, and legionnaires served as pallbearers.

Mr. Estep was born June 22, 1844, in Scott county, Virginia, the son of Mr. and Mrs. Samuel Estep, and enlisted June 24, 1861, in Company C, 45th Kentucky Infantry, and was discharged December 24, 1864.

He was married to Miss Lucinda Long in Paintsville, Ky. They made their home in Kentucky until about 20 years ago when the family moved to Hillsboro, where they have since resided. Two daughters and two sons preceded the father in death. The deceased veteran is survived by the widow and the following children: Ben F. Estep, Dilley; Farris Estep, Baltimore; Mrs. Emma Rose Pennington, Mrs. Emma Woods, Ashland; Mrs. Stella Pomeroy, Salem; Mrs. Nettie Kerr, Portland, and Mrs. Mayme Challacombe, Hillsboro.

Mr. Estep was a member of the Methodist church.

## Labor Situation Still Unchanged

### Loggers in Four of County Camps Remain Idle

Deepening signs of paralysis to logging operations in four Washington county camps, were seen in developments during the first part of this week in which the rift between logging unions and operators (Continued on page 7, column 6)

## Clean-Up Week Opens Monday

Hillsboro rubbish, with the co-operation of the Hillsboro citizens will be given a free ride to the dump grounds beginning Monday, which marks the opening of annual "Clean-Up Week."

Materials to be collected must be in place on curbs in suitable containers which can be handled by one man not later than May 20. Collections will begin Thursday, May 21. Citizens are warned that rubbish set out later must be hauled by owners.

Materials which can be handled include rubbish, ashes, cans, old metal, wood, tires, garbage and any substance which may become obnoxious, will not be accepted.

The last part of the week the fire department will conduct inspections for fire prevention, and hazards will be called to the attention of property owners.

## Where to Vote Friday

No.	Formerly	Voting Place
1	Mulloy	Carlton School House
2	Sherwood	Boy Scout Room in Hotel Building
3	Middleton	School House
4	Tualatin	City Hall
5	S. Tigard	I. O. O. F. Hall
6	N. Tigard	Basement of M. E. Church
7	Metzger	Community Club House
8	Garden Home	School House
9	S. E. Aloha	Buck Building
10	S. W. Aloha	Huber-Aloha School
11	Kinton	School House
12	Laurel	I. O. O. F. Hall
13	Laurel	Community Hall
14	Bloomville	School House
15	Grabe	School House
16	Reading	School House
17	S. Cornelius	M. E. Church
18	(New) Near Forest Grove	Masonic Home
19	E. Gaston	Anthony Kundel's Home
20	Dilley	Artisan's Hall
21	Grove	Depot Building W. V. & C. R. Co.
22	W. Gaston	K. K. Hall
23	Gales Creek	Community Hall
24	(New) Near Forest Grove	Watts School House
25	Timber	Bang's Building
26	Buxton	Grange Hall
27	Manning	Manning Hall
28	W. North Plains	I. O. O. F. Hall
29	Roy	Moore's Store Building
30	Purdin	Thatcher School House
31	Verboort	Forrester's Hall
32	N. Cornelius	City Hall
33	Leisy	School House District No. 8
34	W. North Plains	K. P. Building
35	E. North Plains	Meacham School House
36	Mountain	D. Wenger's Hall
37	Connell	City Hall
38	Oreoc	City Hall
39	N. Aloha	Union Chapel
40	Cedar Mills	Haulenbeck Building
41	North Beaverton	Huber-Aloha School House
42	South Beaverton	J. E. Lahey's Building
43	West Slope	High School Building
44	(New) City of Forest Grove	Central School Building
45	(New) City of Forest Grove	Library Building
46	(New) City of Forest Grove	School House
47	North Hillsboro	School House
48	S. E. Hillsboro	School House
49	S. W. Hillsboro	City Hall

## Orators of High Schools to Vie at Rotary Meet

Annual high school oratorical contest, sponsored by the Hillsboro Rotary club, will be held at the Veterans' hall tonight (Thursday) 6:30 dinner for Rotarians and their wives, Forest Grove, Beaverton and Tigard have definitely signified their intentions of participating.

J. C. Leedy of Portland and formerly of this county, secretary of the Oregon Co-operatives, Inc., spoke Thursday on the importance of the turkey growing industry and said it was rapidly increasing. He anticipates considerable growth in this county this year. Douglas says, he said, is one of the largest turkey growing sections in the country. W. C. Christensen was chairman.

## WPA Project Aids Schools

### Sanitation Work Progresses Supervisor Reports

Concentrating on sanitary improvements at "B" grade dairies, the county health officer, is expected to report considerably in producing a good fair this fall. Dates set are September 3, 4 and 5 with special events contemplated for each day's program. Ed L. Anderson has been selected by the board to manage the entire show.

Summer weather recorded for week

Day	Temp.	Wind
May 8	75	43
May 9	85	42
May 10	86	43
May 11	86	45
May 12	86	44
May 13	89	50

Lowest temperature for the week also was recorded on May 8 when the mercury dropped to 39 degrees during the night. Rain in any quantity was not recorded.

During the period between the present and January 15, the labor cost of the work has been reduced more than 50 per cent through more efficient operation of the crew and the co-operation of persons receiving the benefit of the project.

## Delta Drug Store Remodeling Inside

Following a wave of modernization, which has been underway along Main street all spring, the Delta drug store is installing modern display shelves and redecorating the main room.

A tier of bins, installed years ago along the east wall of the store, are being removed to the back room, and display space provided to the floor. The plan of design sets out to accomplish three purposes which will place quality goods along one side, bargain and cheaper articles along the other with the prescription counter facing the door at the far end of the room.

## Hadley President State Feed Dealers

Howard Hadley of the Imperial Feed & Grain company was elected president of the Oregon Feed Dealers' association at the meeting at the Multnomah hotel in Portland Friday.

Attendance was estimated at 300. Attending from the county were Frank and Ed Schneider, Clarence and Ed DeFrees, George Laver, R. W. Kreitz, Hadley, all of Hillsboro; Charles Ruth, Cornelius; Charles Imlay, Redville, and A. K. Reynolds, North Plains.

## Light Vote Forecast on Friday

### Electors Seem Taking Slight Interest in Outcome of Primary

### Candidates Working

### Townsend Club Reported as Endorsing Support

Apparently uninterested in political events, the bulk of Washington county voters are expected to spend Friday at home despite desperate urging by candidates to cast a ballot. Reports from all parts of the county indicate an unusual lethargy among the citizens, candidates declare.

Meanwhile candidates continue a feverish canvass of voters, while political meets are being held in various places over the county.

### Endorsement Given

In Hillsboro Tuesday night, members of the local Townsend club met, discussed candidates and recommended the endorsement of the feverish canvass of voters, while political meets are being held in various places over the county.

Polity will be open from 8 a. m. to 8 p. m.

Candidates for democratic nomination include E. L. Ross, unopposed for state senator; G. F. Via, Forest Grove physician; Ray L. Antrim of Aloha, and Richard G. Scott of Sherwood neighborhood candidates for representative. Two representatives will be selected.

### Colt Show Saturday Another Stellar Event of Plan

Youth and youth activities of Hillsboro county will be a big feature of the county fair in September, according to a decision of the Washington County Fair board at a meeting of that body Saturday afternoon in the chamber of commerce rooms. The work will be Farmers, Boy Scouts and other similar organizations.

Another feature of the fair will be the colt show to be held on Saturday of the fair week with special premiums offered to attract a large number of entries. The colts will be shown in the ring and rated by competent judges.

Official opening of the fair will be Thursday, September 3, at 11 a. m., the board decided. Prominent persons from all parts of the county will be invited to participate in the opening ceremony.

### Firemen Plan July 4 Event

### Wilbur Dillon Manager of Annual Celebration

Plans for the annual Fourth of July celebration here July 2, 3 and 4 are rapidly rounding into shape with the Hillsboro Firemen's association again sponsoring the event. Wilbur Dillon, fire marshal, is serving as celebration manager with the aid of Fire Chief S. W. Melhusen, Bill Everett, Andy Lentz, Glenn Burge and A. L. Brock as the general committee.

Dedication of the Shute park with its \$15,000 in beautification is scheduled for the one of the big features of the celebration and will be on July 3. The chamber of commerce has been asked to take charge of it. State and city officials (Continued on page 7, column 4)

## Orchardists Get Benefits of Conservation Program

(By Wm. F. Cyrus, County Agent)

Orchards now come under the provisions of the agricultural conservation act according to recent changes that have just been announced. Any grower who seeded a cover crop in the fall of 1935 in his orchard and has plowed or will plow this down this spring, will be entitled to a payment not to exceed \$2 per acre with the total amount paid to any one grower not exceeding a dollar per acre for this total base.

This will actually mean that practically any orchardist in this county will be entitled to at least one dollar per acre if he has a cover crop that he has just plowed under or will plow under, and according to the present program, such payment would be continued and made again in 1937. Practically the total acreage of soil depleting crops on the farm in 1936 must not be larger than those in 1935.

Where crops have been grown between the tree rows in 1935, and were soil depleting and a cover crop is grown in 1936 without any depletion in the following year, the grower could qualify for a class one payment on the 15 per cent that he shifts to soil conserving crops. This, of course, would have to be considered on the basis of the entire farm as well as the orchard.

### Baseball Benefit Dance Here Saturday, May 23

A baseball benefit dance will be held at Shute park auditorium Saturday night, May 23, to raise funds for piping water into the new baseball park. The 25-cent tickets will be good for the dance or any baseball game in Hillsboro.

Washington county relief committee will resume work on old age assistance applications tonight (Thursday) when a number of applications already passed will be reviewed and a large number of new ones considered.