

### North Plains Group to Meet

#### P.-T. A. to Elect Leaders; Birthday Celebrated

(By Mrs. Henry Cyber)

NORTH PLAINS—North Plains P.-T. A. will meet Tuesday evening with pot luck supper at seven o'clock. Officers will be elected and all members are requested to attend. Everybody welcome. A program will be given.

North Plains card club met with Mr. and Mrs. A. F. Christener Wednesday evening for their daughter-in-law, Mrs. Mildred Davis, on the anniversary of her birthday. Present were Mr. and Mrs. Patrick Davis and son, Margaret Davis of Portland, Hazel and Art Hanna of Hillsboro.

Mr. and Mrs. C. J. Rider of Yoncalla are guests of Mr. and Mrs. J. W. Pritchard this week. Mrs. Rider is a sister of Mr. Pritchard.

### Scholarship Winner



Owen W. Mathews, winner of the \$5000 Cantor scholarship, who will be guest here tonight (Thursday) at Boy Scout court of honor.

### P.-T. A. to Give Benefit May 1

Plans for the Silver Tea on May day to be given by the Hillsboro Parent-Teacher Association are nearing completion. It will be given in the union high school cafeteria room from 3 to 5 to help furnish the restroom for the teachers.

### Plans Farm Setup



Howard H. Tolley, former assistant AAA administrator, who left the government service last fall, has been recalled to aid in directing the new \$500,000,000 soil conservation-farm relief program.

All friends of the school and P.-T. A. members are cordially invited. Entertainment will be musical with selections by Mrs. Fred Sewell, Mrs. V. W. Gardner and Miss Esther Wick.

Special committees have been announced by the general committee in charge of the project. Misses Mary Yoder, Edith Fort and Helen Parr and Mrs. Morris Well and Mrs. R. W. Gates will arrange the room. Miss Dorothy Tongue and Miss Virginia Brogden are planning decorations. Mrs. S. W. Melhuish, Mrs. T. G. Bronleewe, Miss Florence Krozer and Miss Pearl Allen are responsible for refreshments while Mesdames H. H. Stannard, Nye Bristol, Paul Patterson and Jake Weil will arrange the service. Publicity committee includes Mrs. M. M. Romig, Mrs. Elizabeth Abraham and Miss Florence McDonald.

High school girls who will help serve are Marjorie Montgomery, Jean Person, Louise Cruzen, Barbara Enschede, Mary Ellen Mariner and Christine Robb. Girl Reserves' service committee offered to assist in the kitchen.

General committee in charge of the tea includes Mesdames J. M. Person, George Laver and W. C. Christensen and Misses Tennessee Weathered and Elsie May Cimino.

#### Expels Carbon

Cars that are used exclusively for city driving are inclined to become loaded up with carbon sooner than the average, according to A. E. Shearer, manager of the emergency road service of the Oregon State Motor association. A good warming up on the open road is actually good for the motor, because it has a tendency to loosen some of the carbon and expel it with the exhaust gases.

**SELL**  
Through the  
**WANT-ADS**

Our classified columns may have just what you are looking for—Read them.

**Week-end MEAT BARGAINS**

Finest of Meats at the Lowest of Cost

All Meats Inspected by Drs. Nicol and Almuist

HAMS	Our Home Cured Half or Whole, Lb.	25c
SHORTENING	White Cloud 3 lbs.	28c
BACON	Back or Side, Lb.	24c
PICNICS	Lb.	19c
BACON SQUARES	Lb.	17c
PORK CHOPS	Small, Lb.	24c
BOILING BEEF	Lb.	10c

We Carry a Full Line of SWIFT'S BRANDED STEER BEEF. Give it a Trial.

**FRED'S SUPERIOR MARKET**

Phone 651 5 Deliveries Daily Res. Phone 321Z

## Crooked Furrows, Once Bane of Every Farmer, Help in War on Erosion

If farmers of yore could return to survey the lands they left, they would learn, to their horror, that the farmer of today has broken with tradition.

Even up to the last decade, the pride and boast of every farmer was his perfectly straight furrow. The smallest deviation from a straight line was enough to spoil his entire day. A crooked furrow was an agricultural sin.

Today, the course of most furrows suggests a drunk's staggering gait. But it isn't that the modern farmer is less conscientious than his forebears. Quite the contrary, in fact.

Within the last half decade farmers have become erosion-conscious. They have learned that straight furrows provide ready-made canals in which rain torrents may sweep rapidly across farms, carrying away valuable soil. They have learned, also, to wind furrows around the side of a slope, in line with its contour, in this way offering resistance to damaging rain waters.

#### Water erosion works its mischief in two principal phases. The first is sheet erosion. When land has been laid bare, and its surface weakened, through over-cultivation, overgrazing, or reckless removal of trees, topsoil gradually disappears through the years that follow.

Sheet erosion is hard to detect, but not the next phase, gully erosion, in which little runnels of rain cut in the land tiny canyons that grow rapidly, eventually to claw huge portions from farms.

Plowing furrows along slope contours helps crops halt rain as it pours downward, and to halt it until absorbed.

Further strength is gained by alternating the crops: placing sod-forming strips of grass and clover, or a difficult-to-erode crop, such as long-rooted sorghum, next to easily eroded ones, such as "clean cultivated" corn or cotton.

#### Cherry Grove Plans Benefit

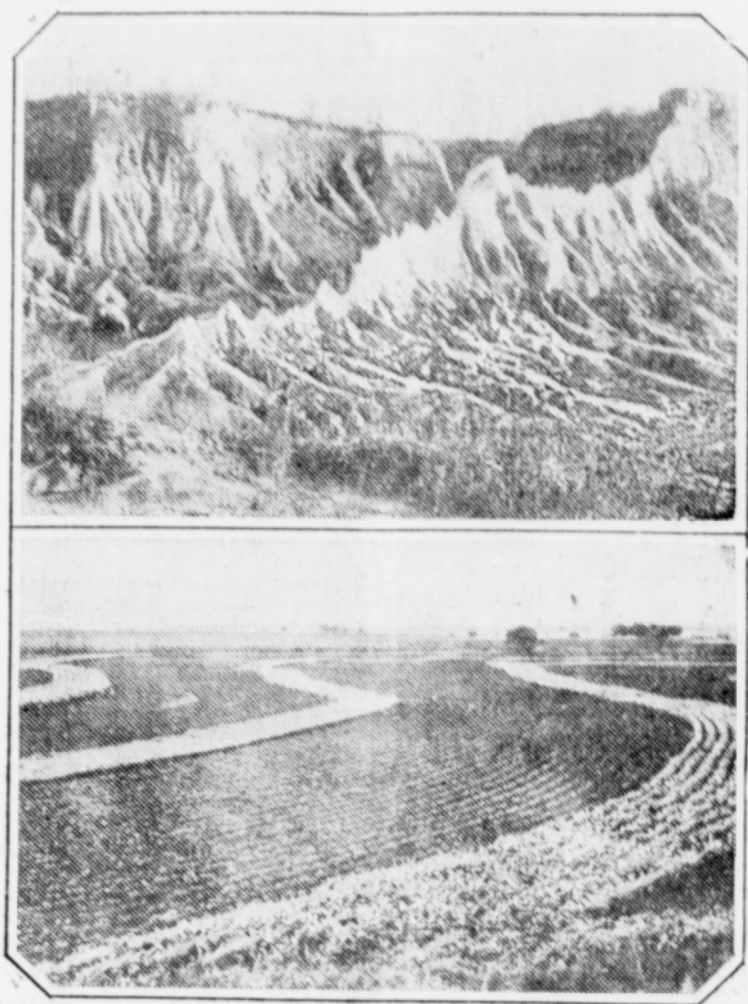
(By Mrs. P. Patton)

CHERRY GROVE—A Red Cross benefit will be held at the school house at Cherry Grove Saturday evening. Free entertainment starts at 8:15 p. m., followed by a pie social. Ladies are asked to bring a pie. Gentlemen, be sure to buy a pie. Proceeds will be used for benefit of flood victims in the east. Webb Hughes of Forest Grove will auction the pies.

Sigurd Wallin, a student at Oregon State college, spent from Thursday until Sunday with his parents, Mr. and Mrs. A. Wallin.

Mrs. Maryeson, who has been ill with shingles at a hospital at Hillsboro, was recovered enough to return to her home in Cherry Grove last week.

Mr. and Mrs. J. P. Johnson have a new great grandson, born to Mrs. Gordon Brown (Edith Moorehouse) in San Diego.



Above, erosion in an advanced stage. This was once good corn land, but now has turned into a gash of raw clay. Below, curving furrows on an eastern farm that follow the lay of the land and hold the soil against erosion.

run-off waters must drain, wide runways are left, in which long grasses are encouraged to grow.

Farmers of old never knew that, in plowing straight furrows, they were really robbing their descendants of land. And so, with contour plowing, strip cropping, and terraces, the modern farmer seems determined not to repeat the mistakes of his predecessors.

#### Divorce Suit Filed

Harper—Audrey A. against Floyd H. Lee—Raphaella against Mathew J. Larsen—Lars against Irene Mae.

Ask your attorney to send you legal advertising to the Argus.

**FOREST GROVE GRADE A CREAMERY BUTTER**

Ask for it every time you order

BUTTER A Washington County Product of Highest Quality.

Available at All Groceries

**Columbia Food Co.**

Prices Effective Friday, Saturday and Monday April 24, 25 and 27, 1936

It Pays to Buy **NATIONALLY FAMOUS BRANDS** at these **LOW PRICES**

JELL WELL	3 pks. 15c	Cube Flavored
BISQUICK	Large pkg. 28c	
TOMATO JUICE	LIBBY'S 3 cans 20c	(2's 2 cans 19c)
GINGER ALE	CANADA DRY 12-oz. 19c	29-oz.
SNOWDRIFT	(6-lb. can \$1.09) 3-lb. can 55c	
WESSON OIL	(1/2-gallon 75c) Quart 39c	
IVORY SOAP	MEDIUM (Large bar 9c) 4 bars 25c	
OLD DUTCH	CLEANSER 4 cans 25c	
COFFEE	Columbia Best Lb. 23c	Economy Coffee Lb. 17c
GRAPE JUICE	KERR'S, pure Concord. Quart, special 23c	
KIPPERED SNACKS	NEW PACK 3 cans 10c	
SYRUP	KARO, Red or Blue Label, 5-lb. pail 35c	
HONEY PURE	5-lb. can 43c	
TOMATOES	2 1/2's in Pail 2 cans 19c	
CATSUP	KERN'S 12-oz. bottle 10c	
NUBORA	WASHING POWDER, Dishes inside, Large pkg. 33c	
CHEESE	FULL CREAM, POUND 17c	

### Art Supervisor Speaker P.-T. A. Meeting Monday

"The right to enjoy the beautiful belongs to all," said Miss Esther Wuest, supervisor of art in the Portland schools, who spoke to the Hillsboro P.-T. A. Monday on "Art as Related to Everyday Life." She explained that art is a visual expression that deals with the aesthetic sense. "The understanding of art is appreciation—genius is born, but appreciation is cultivated," Miss Wuest said. "We enjoy art as far as we understand it."

Displays of work done in the Hillsboro schools were both entertaining and educational. Miss Ruth Jones explained how the "Clock Shop" was made by the beginning class at Peter Boscow school. The display included many devices for telling time among which were sundials, sand glasses, candles, hempen rope, cuckoo clocks, alarm clocks, mantel clocks, kitchen clocks and even a great "grandfather clock."

The importance of art in mechanical sciences was explained by M. M. Romig, who showed blue prints and drawings of projects made by industrial arts classes. Lester Moberly told about the puppets, ducks, dolls, birds and animals made by children in his classes, books and friezes were also on exhibit.

Mrs. R. J. Beattie was nominated for president of the organization for next year. Other officers nominated are first vice-president Mrs. M. M. Romig, second vice-president Mrs. Ben Faber, secretary Mrs. J. L. Seary and treasurer Charles Douglas.

Mrs. T. G. Bronleewe, membership chairman, presented a prize given by the Washington County

P.-T. A. for the most new members in February and March.

Refreshments were served by Mesdames Arthur Kroeger, chairman, Marie Priest, Rene Melteboke, J. C. May, Orange Phelps and Roy Mann.

#### Pre-School Group Meets

"How schools capitalize the child's interest" was the subject studied at the "Pre-school to 12 years old" study group Tuesday at the Peter Boscow school. Mrs. Harold Haley directed the discussion. It was brought out that children learn more effectively when they are genuinely interested in the subject to which they are required to direct their attention. This group is a part of the P.-T. A. Parent Education program.

Rev. E. B. Lockhart of Roseburg formerly pastor of the local Methodist church, was a Hillsboro visitor Wednesday, attending Polmona Grange.

#### Births

Wood—To Mr. and Mrs. Clarence Wood of Mountaineer, April 21, a girl.

Randall—To Mr. and Mrs. Lee Randall of Oreno, April 22, a girl.

Northrup—To Mr. and Mrs. Sheldon Northrup of near Banks, April 22, a girl.

**Health Insurance**

Any mother knows her biggest responsibility; it's keeping her family healthy.

Milk is an essential food in maintaining health. We co-operate by supplying milk as pure as humanly and scientifically possible.

**Morningdew Guernsey Dairy**

"A Flavor You'll Favor" Sam Hult & Sons

Phone 2568 Three-Year Average Score by Pacific International Over 98

**PIGGLY WIGGLY**

FREE DELIVERY 4 TIMES DAILY Phone 3131

Prices Effective April 23, 24 and 25 THURSDAY - FRIDAY - SATURDAY Hillsboro, Oregon

**BARGAIN DAY IS EVERY DAY AT PIGGLY WIGGLY**

We Reserve the Right to Limit Quantities — No Sale to Dealers

NEWTON PIPPIN Apples	Small Size Full Box 45c	Large size Full box 59c									
FRESH VEGETABLES	New Potatoes, 5 lbs. 23c	WAX ONIONS 3 lbs. 15c	RADISHES or ONIONS 3 bunches 5c	NEW PEAS— 3 lbs. 17c	ASPARAGUS— Local, green, 2 lbs 15c	TOMATOES Fresh, ripe, 2 lbs. 13c					
SWANSDOWN CAKE FLOUR	Pkg. 23c										
Snowdrift	3-lb. Tin 53c	Wesson Oil	Quart Tin 39c								
MAXWELL HOUSE COFFEE	1-lb. tin 27c										
MAYONNAISE	BEST FOODS, Pint 27c	qt. 43c									
KELLOGG'S Money Saving SALE	Corn Flakes 7c	Pep 10c	Rice Krispies 10c	All Bran, large 19c	Wheat Krispies 11c	Wh. Wheat Biscuit 10c	Krumbles, 2 pks. 25c	Kaffee Hag, lb. 43c			
Saladise, pint 23c	Sunrise Coffee, lb. 23c	Shrimp, 2 for 25c	Blue Plate, Wet Pack	Starch, 2 pks. for 15c	Corn or Gloss	Creamettes, 2 pks. 15c	CANADA DRY Large 28-oz. bottle 2 for 25c	5c deposit on bottle	Burnett's Vanilla, 2-oz. 23c	Probab Junior Blades 25 in pkg. 59c	Special Coffee, lb. 17c
DEL MONTE SPECIAL SALE PEACHES	Lg. 2 1/2 can 2 cans 25c	TOMATO JUICE No. 1 tall 3 cans 25c	HOT SAUCE 2 cans 9c	Tomato Catsup 2 14-oz. bottles 25c	Early Garden PEAS 2 No. 1 tins 25c	Bantam Corn 2 No. 2 cans 25c					
LUX FLAKES	Small 9c	Large pkg. 21c	LUX TOILET SOAP, 2 cakes 11c								
RAINIER BEER—12-oz. can.	Ice Cold 2 cans 23c										
BISQUICK	Large Pkg. 28c	MARSHMALLOWS Campfire, 1-lb. pkg. Pkg. Magic Flower Garden FREE 17c									
CALUMET BAKING POWDER—	1-lb. tin 19c										
ED'S MASTER MARKET	FOR BETTER MEATS SATURDAY ONLY	Ground BEEF No Cereal Lb. 15c	BACON BACK Sugar Cured Good and Lean Lb. 26c								
Sugar	Fine granulated 8 lbs. 33c	BUTTER — Piggly Wiggly, Grade A. 2 lbs. 61c									