

Plan Benefit North Plains

Ball Team Gives Benefit Dance Saturday Night

NORTH PLAINS—North Plains baseball team will give a benefit dance in the K. of P. hall Saturday evening. Everybody is welcome.

Social Held at Hazeldale

Local People Move to Other Locations During Week

(By Mrs. J. C. Smith) HAZELDALE—Community club held a card party Saturday evening in the school house.

Local Farmer Has Large Average Yield of Oats

F. F. Ranley of north of Hillsboro averaged 100 bushels of oats to the acre on a 10-acre field, according to Imperial Feed & Grain company.

Say you saw it in the Argus.

Social Held at Hazeldale

Local People Move to Other Locations During Week

(By Mrs. J. C. Smith) HAZELDALE—Community club held a card party Saturday evening in the school house.

Fred Strickland left here a couple of weeks ago for Los Angeles, Cal., where he has employment.

Day Athletic Instructor Edward Day has been elected athletic instructor at Banks union high school.

Pierce Family Moves Mr. and Mrs. Earl Pierce (Nellie O'Connor) and daughter Bonnie Jean, who came here last fall from Osborne, Kansas, have moved to Beaverton to make their home.

Emersons Move Mr. and Mrs. Carl Emerson, who have been living on the Carey place for the last year, have moved onto a place near McMinnville.

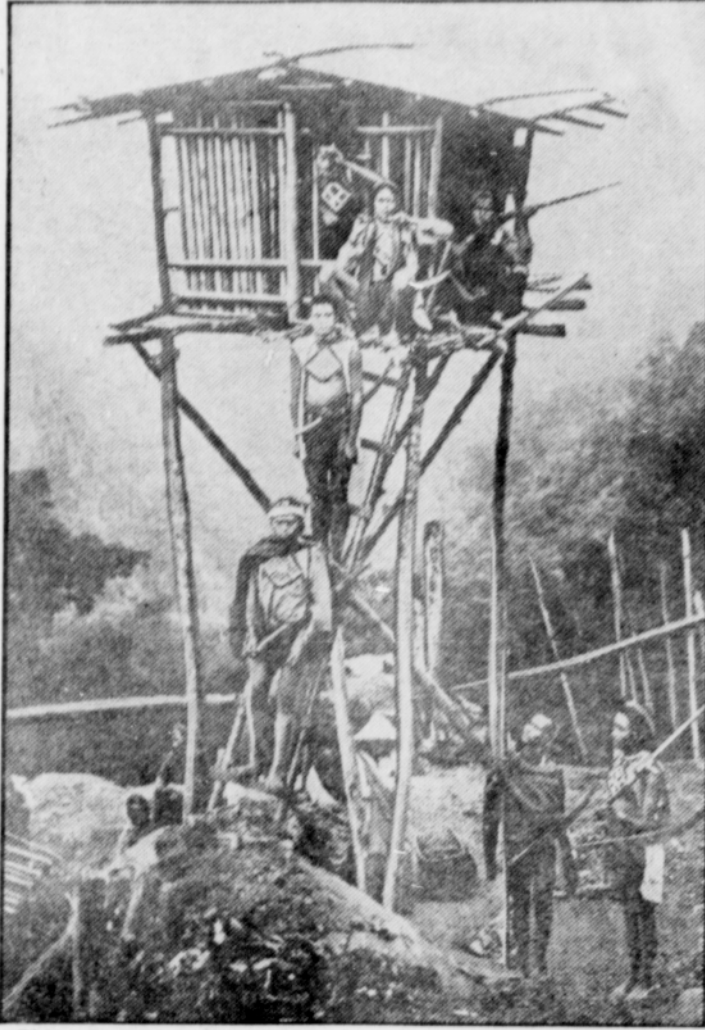
John Motheral of Carlton, who is a former resident of Cooper Mountain, and who is now employed in Montana, visited friends here last week.

First Church of Christ (Scientist) Services are held every Sunday at 11 a. m.; Wednesday evening services at 8 o'clock.

Methodist Episcopal Church Church school, 9:45, Miss Rose Cave, superintendent.

Whosoever Will (Above North Plains) Sunday school, 10 a. m., we have a new intermediate class.

Scene From Quake-Torn Island



This scene from the interior of Formosa reveals why many thousands of natives were left homeless when a series of earthquakes struck recently, killing more than 3000 and ravaging huge sections of the island.

that promptness and the co-operation of everyone is needed to the success of such a program. Christian Endeavor, 7 p. m. Intermediate and young people. Union service with M. E. church in our building.

Tualatin Plains Presbyterian Church (Four miles north of Hillsboro) Sunday services: Bible school at 10:15; preaching at 11 a. m.

Banks M. E. Church Sunday school every Sunday, 9:45 a. m. Mrs. H. Jensen, superintendent.

Methodist Episcopal Church Church school, 9:45, Miss Rose Cave, superintendent.

Whosoever Will (Above North Plains) Sunday school, 10 a. m., we have a new intermediate class.

Trinity Lutheran Church Public worship at 10:30 a. m.; Sunday school at 9:45. Sermon

Safeway Employee Picnic Sunday at Viking Park

Safeway's annual picnic will be held at Viking park Sunday. More than 2000 employees and families, members of Safeway Employees' association in northwestern Oregon and southwestern Washington, are expected to take over the grounds for a full day of sports, frolics, games, swimming and dancing.

Neighborhood news from 30 Argus correspondents in different sections of Washington county appear in the Argus each week.

Safeway Employee Picnic Sunday at Viking Park

Safeway's annual picnic will be held at Viking park Sunday. More than 2000 employees and families, members of Safeway Employees' association in northwestern Oregon and southwestern Washington, are expected to take over the grounds for a full day of sports, frolics, games, swimming and dancing.

Kenneth Walker

Kenneth Walker, former Hillsboro resident, died Sunday at his home in Oakland, Cal., according to word received here by his brother, Perry Walker. He is survived by his widow and two other brothers, Ward of Garibaldi, and Wilbury of Portland.

Many people recognize butter-milk as an ideal summer beverage. Practically free from fat, high in essential food elements, with a cool, refreshing tart flavor, makes it a good hot weather drink.

Our classified columns may have just what you are looking for—Read them.

MEAT SPECIALS At Your Service

Ready to supply you with the FINEST MEATS AT THE LEAST COST! Ready to advise you in purchasing. Ready to give real values.

- BOILING BEEF and BREAST of VEAL, Lb. 9c
VEAL ROAST Lb. 12c
BEEF ROAST Lb. 11c
SIRLOIN and RIB STEAKS Lb. 15c
BEEF and PORK LIVER Lb. 10c
LARD COMPOUND. 3 lbs. 25c

FRED'S SUPERIOR MARKET Phone 651 5 Deliveries Daily Res. Phone 321Z

Columbia Food Co. LOW PRICES for HIGH QUALITY. Prices for Friday, Saturday and Monday, July 26, 27 and 29. RAISINS 4-lb. bag 23c. COFFEE HILLS BROS. (2 lbs. 53c) 1-lb. can 27c. PINEAPPLE Broken slices. No. 2 1/2 can 15c. GRAPEFRUIT 300s. 3 cans 25c. CORNED BEEF Armour's. 12-oz. can 15c. MATCHES Every strike a light. Searchlight. 6 boxes 23c. SALAD OIL Pure cotton seed salad oil. Quart 25c. SHORTENING 4-lb. carton 45c. SOAP Camay or Palmolive. 3 bars 14c.

There is No Substitute for QUALITY. That is the platform upon which we built our business. You can prove that it has paid by shopping here and seeing the throngs of discriminating food buyers in our store. HILLSBORO MEAT COMPANY Quality Service Phone 982 Free Delivery

HILLSBORO CASH GROCERY Independently Owned and Operated Free Delivery Friday and Saturday Specials Telephone 2001. Macaroni 3 lbs. 15c. Wason's Gelatin DESSERT 4c. CORN PEAS No. 2 Cans 3 for 25c. Peanut Butter 2-lb. Jar 33c. Sweet Pickles In bulk. Quart 25c.

SAFEWAY STORES

Give the Safeway man an opportunity to get acquainted with you and he will soon be able to serve you more satisfactorily than you have ever been served before. SUGAR PURE CANE 10-lb. cloth bag 49c. PINEAPPLE No. 2 cans 25c. TOMATOES Taste Tells. 9c. TOMATO SAUCE—Monte Rio. 3 cans 10c. SALMON, Del Monte or Libby's. 1/2 cans. 2 for 25c. VINEGAR Pure cider. In your own container. (Limit) 10c. PICKLING SPICES—2 pkgs. 15c. POST TOASTIES. 2 pkgs. 16c. BRAN FLAKES. Post's. Pkg. 11c. 1 PKG. POST'S BRAN FLAKES FREE