

THE VELIE!

The Car with Endurance And the Car of Comfort

The Velie automobile is not an experiment—it has made good everywhere. It is the car for a good road and negotiates bad roads with greater ease than other cars of its class.

Big Velie Six - - - \$2185

Small Velie Six - - \$1735

If You Want a Car of Class, Get the Velie
LET US DEMONSTRATE

NEW SERVICE GARAGE.

Try our new garage for service, promptness and despatch
Accessories in stock

Losli & Schlattman

Beaverton, Oregon
On Highway, Opposite Post Office

John Jack, of near Farmington, as in the city Friday.

Collections—Knight Adjuster Co., McMinnville, Ore. 6-17

Harry Cline, of Laurel, was in town Monday, transacting business.

Mrs. J. F. Johnson and son, of Astoria, were Argus callers Saturday afternoon.

Remy Vuylsteke, of above mentioned, was greeting friends in city the last of the week.

W. A. Goodin, of near Cornelius, was in town Friday morning. Goodin is a breeder of Guernseys.

For sale: Eight pigs, over 10 weeks old. Chester Whites.—Lester Berg, Laurel, one mile west of town.

Leonard VanLom, of south of Cornelius, who recently sold his farm to J. B. Phillips, was a city caller Friday. Leonard now resides in Cornelius, and is looking for another ranch if he can find one to his liking.

Mr. and Mrs. J. H. Garrett, Mrs. Stockton and Mrs. Chas. E. Wells, of this city, spent Saturday and Sunday at Eugent, where they have children at the University. They made the trip overland in the Garrett car.

HOTEL WASHINGTON

Dining Room is Now
Operated as Restaurant

We serve meals, short orders and lunches
at all hours

DISASTROUS FIRE

Emil Duyek, of Verboort, suffered a disastrous fire last Saturday evening about 10 o'clock, when his barn was burned. He lost the silo attached; two head of horses; six head of cows; farm implements, hay, grain, feed, and another outbuilding close by. John Vanacker, of near Cornelius, lost a horse which was in the structure. Mr. Duyek's loss is estimated at \$3,500, and he carried only \$900 insurance in the London & Lancashire and the Pacific States. John Vanderwal, the agent, adjusted the loss the first of the week at the insurance policy figure, and Mr. Vanacker receives \$110 for the loss of his animal.

SECOND CONCERT

The second concert of the 1919-20 season of the Hillsboro Women's Chorus will be heard Monday evening, May 17, at the Congregational Church. The assisting artists are Wm. Wallace Graham, violinist, and Christian Pool, cellist. Mrs. Lillian Jeffreys Petri will be the accompanist of the evening, and Paul Petri will conduct. The Chorus numbers are fully up to the usual standard the Chorus has set at their former concerts and the assisting artists are well known to Hillsboro people. The trios, by Mrs. Petri and Messrs. Graham and Pool, are sure to prove an especial treat.



Shingles for Hard Service

to withstand all kinds of weather must be made from good live timber, of full thickness and slowly dried. That explains why some shingle roofs wear so much longer than others. A good shingle roof is the cheapest in the end. If you're going to recover your house you'll be interested in our practical experience with roofs. It's free—get it.

Copeland & McCready
Hillsboro, Oregon



HE'S THE OLD RELIABLE

GRAND old "Bull". He's the best there is. He sold over 300,000,000 bags last year.

You know genuine "Bull" Durham—never an enemy; millions of friends.

Genuine "Bull" Durham tobacco—you can roll 50 cigarettes from one bag.

That's some inducement, nowadays.

GENUINE

"BULL" DURHAM TOBACCO



To pipe smokers: Mix a little "BULL" DURHAM with your favorite tobacco. It's like sugar in your coffee.

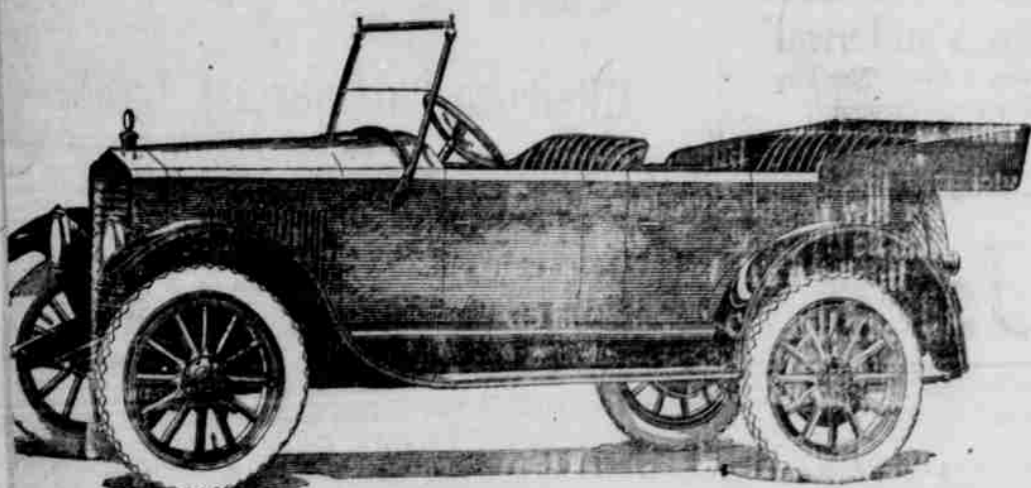
Manufactured by
The American Tobacco Co.

Cars to Fit Your Needs

CHALMERS

The Chalmers chassis has been so perfected during the past three seasons that it may now be considered as a collection of well-balanced mechanical units. Chief among these is the famous Chalmers Hot Spot Engine, with its Ram's-Horn manifold and other advanced features of design. No other motor is its peer in year-round smoothness of operation and genuine efficiency in extracting high power from present-day low grade fuel.

Essex



An Essex made a 105-mile run from Astoria to Portland, covering this distance in 2 hours and 21 minutes and beating the best previous time by 51 minutes.

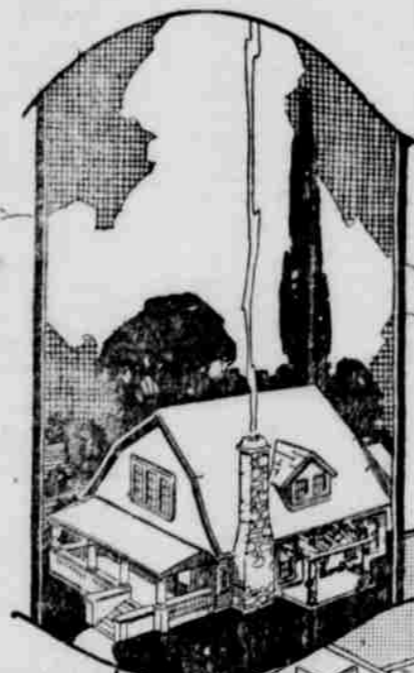
Maxwell

Numerous changes in this year's model include: NEWLY CONSTRUCTED PISTONS, HOTCHKISS DRIVE, TWO-UNIT STARTING AND LIGHTING SYSTEM AND NUMEROUS OTHERS of which we will tell you from time to time.

Call and See Us or Phone For Appointment

Forest Grove
M. S. ALLEN & CO. Forest Grove
WASHINGTON COUNTY DISTRIBUTORS

Inside and Out- FULLER PAINTS, VARNISHES, ENAMELS, Etc.



preserve
and beautify

THE first essential of paint is to preserve. Second, to beautify. Too many people make the mistake of considering only the latter, consequently buy paints of inferior quality.

The result is a temporary beautifying effect, without preserving the wood.

FULLER Paints and other products are of that quality which preserves and beautifies. Through their use, inside and out, years of life will be added to your home and it will be made more livable to yourself and family.

Seventy-one years of paint-making experience are back of every brushful of FULLER Products. Insist on FULLER'S and you'll be sure of results. And remember, there's a FULLER Product for every paintable surface—inside and out.

Look Up a
FULLER
DEALER
in Your Town

W. P. Fuller & Co.

1849-1920

Northwest Branch Houses at Portland, Seattle, Tacoma, Spokane, Boise.

