

W. H. WEHRUNG, President. D. S. T. LINKLATER, Vice President. DAVID KARATHI, Cashier.

### The Hillsboro National Bank

Oldest National Bank in Hillsboro

With Savings Department  
Both under Government Supervision.

\$60,000 Capital

The Largest Capitalized Bank in Washington County.

4 per cent On Savings 4 per cent

\$1.00 Opens an Account

We offer every facility which conservative banking justifies.

DIRECTORS—J. C. Hare, E. J. Karathi, M. C. Wehrung, H. T. Bagley, J. C. Karathi, G. A. Wehrung.

Second and Main. Hillsboro, Oregon

### An Expert on Bread



agrees that the quality of Log Cabin Bread is uniformly perfect. We take the most scrupulous care in every detail of baking and our bakery is pure and clean as to the ingredients that are put into

#### LOG CABIN BREAD

Our bakers are experts in their trade and we always purchase the latest machinery to improve the quality of our bread.

LOG CABIN BAKING CO., Portland.  
For sale at T. E. Perkins, Hillsboro.

W. E. MAYS, President. E. M. MAYS, Cashier. J. C. BEACH, Vice-President

### NORTH PLAINS COMMERCIAL BANK

North Plains, Oregon.

Solicits your patronage. Does a general banking business, and pays 4 per cent. on time deposits.

#### DIRECTORS:

W. E. MAYS, E. M. MAYS, W. L. BATCHELDER, J. C. BEACH, GEO. R. BAGLEY.

#### Administrator's Notice

Notice is hereby given, that the undersigned has been appointed administrator of the estate of Christian Larsen, deceased, and has duly qualified as such administrator. All persons having claims against said estate are hereby required to present the same to me with proper vouchers, at the law office of M. Bailey Bump, in Hillsboro, Washington County, Oregon, within 6 months from date hereof.

Dated at Hillsboro, Oregon, June 3, 1912.  
Carl Larson,  
Administrator of the estate of Christian Larsen, deceased.  
M. Bailey Bump, Attorney for estate.

#### Notice of Final Settlement

Notice is hereby given that the undersigned Executor has filed in the County Court of the State of Oregon, for Washington County, his final account in the matter of the estate of Fred Meyer, deceased, and said Court has designated Monday, the 2nd day of July, 1912, at ten o'clock A. M. of said day, at the county court room in Hillsboro, Oregon, as the time and place for hearing objections to said final account, and for the final settlement of said estate.

Dated this 11th day of June, 1912.  
Thomas Connell,  
Executor of the Last Will and Testament of Fred Meyer, deceased.  
Bagley & Hare, Attorneys for Executor.

Five-room bungalows on easy payment plan, in Pattison & Moran addition, West Hillsboro. See Sparkman. 13-6

### C. C. CHAPMAN ASKS FOR FARM EXHIBITS

Says County Can Have Representation in the East

WRITES TO COMMERCIAL BODIES

Something the Hillsboro Development League Should Foster

Oregon will pay more attention this year than ever before to Eastern land shows and Secretary C. C. Chapman, of the Oregon Development League, is determined that this state shall be represented at the various expositions to be held next Winter.

He has taken steps to collect a good showing of grains, grasses, fruits and vegetables from various parts of Oregon for exhibit later in the East. He asks the co-operation of the various districts in order to do this and emphasizes the value this sort of advertising will do every section that falls in with the plan.

Writing from the Portland Commercial Club, he is sending out the following appeal to the various commercial bodies of the state.

Gather the grain in sheaves, cutting with a sickle before your general harvest. Also grasses, clovers, alfalfa. Try and get perfect straw, uniform lengths—get good, perfect heads, uniform size. Sheaves should be four inches through. We should have from five to ten sheaves of each variety from you. Each sheaf will be used at a different place, and must be new for each place. Wrap each sheaf separately, and do not tie tight and mar the straw. There's no use taking trouble to get good samples, just to spoil them by neglect of some little detail.

Put tag on each sheaf, showing name of grower and locality in which grown. We want you, your locality and the grower to get the prizes and awards. We will see that worthy samples are entered in competition all over the country, and the cups, ribbons, medals, prizes and awards that are won by your growers will all be exhibited here in Portland and sent to you. There are all manner of prizes offered and we want you to win some of them and secure the benefit of the publicity.

Get rid of your surplus of good seed grown from one seed. Also vegetable—get good specimens, wash them clean, put them in a dink-o place (not a cellar, though)—no Larry Live, where no light shins in to discolor—and let them dry. Properly dried, the common vegetables will be in first-class condition for all the big shows. Show what your section can grow in a diversified way—your people may not know in your own town, and will be amazed to see what you gather.

Fruits are not so easy to handle—they should be "processed" in jars—and look prettiest when the whole limb or plant is processed. Have you anyone locally who understands this? If not, let us know and we will help you with some practical suggestion. But gather the grains, grasses and vegetables anyway—you can get busy on that without waiting for the fruit processing.

Send notices to all your progressive farmers—cheap doggers will do, your merchants will help you—your postmaster will take special pride in helping you. Ask your local newspapers to help you—the editors help every good cause, and they will arouse tremendous interest on the part of growers. Everyone should make it his and her special business to see that his home locality is creditably represented at these great exhibits.

We will help you from this end. Send us the names of growers and we will write each a letter asking his personal co-operation. Send us names of public-spirited citizens who can help interest the growers—we will write them, asking them to drive out and visit the farmers. We will send shipping directions later.

#### Notice to Contractors

Notice is hereby given that the Board of Directors of School District No. 38, of Washington County, Oregon, will receive sealed bids for the finishing of the two upper rooms in the Oreno school house. Specifications may be seen at the Oreno Drug Store, Oreno, Ore. Bids will be opened July 5, 1912, at 8 o'clock p. m. The Board reserves the right to reject any or all bids.

Ira W. Handley, Clerk.  
Hillsboro, Ore., Route 4.

Miss Bossie Connell, of Portland, visited relatives and friends in the city, over Sunday.

S. C. Sherrill departs Monday for Marshfield, to teach a three months term of school, returning this Fall to take charge of the Watts school, above Forest Grove.

Travel over the county reveals numerous mule colts this season, and if this keeps up this section is going to rival the great state of Missouri for mule culture. It would be quite a joke for Oregon to out-mule the "show-me" state. A well known Missourian the other day admitted that the mule would go to better weight here, with same dam and sire, than back in Missouri, on account of it requiring less animal heat in the Winter, thus giving the youngster a better chance to grow.

### CHABROL

Belgian No. 22,732 American No. 2764

Foaled in 1901; bred by Emma José Dumont of La Boueyre, Chassart, and imported by A. C. Ruby & Co., of Portland, Ore. A splendid Belgian sire, whose gets take first prize at all colt shows.



#### SEASON OF 1912

Monday until noon, at E. C. Mulloy place, Laurel.  
Monday afternoon, Henry Boge place, Chehalum Mountain.  
Tuesdays, at home place, H. H. Boge, Farmington.  
Wednesdays, on call.  
Thursdays, at Henry Hesse's place, near Groner & Rowell mill, Scholls.  
Fridays, at Ladd & Reed farm, Reedville.  
Saturdays, at Hillsboro, Second Street barn.  
TERMS:—Season, \$12; payable half when bred, and remainder at close of season.  
Care to prevent but not responsible for accidents.  
H. H. BOGE, Owner and Groom.



### French No. 51,943 American No. 50,401

#### Finely Formed ALI Coal Black

Imported Percheron Stallion, foaled in France and imported by A. C. Ruby & Co. in 1909.  
Sire, BRUTUS, No. 34,791 Dam, LISETTE, 18,038.  
SEASON 1912

Monday noons, at Wm. Rieley place, Leistyville; Monday nights, at Jos. Connells, Tuesday at Fred Hamel place, West Union; Wednesdays, at Murray place, Cedar Mill; Thursday noon at ; Thursday nights at Redmond barn, Hillsboro; Friday noon, at Henry Hogrefe place, Blooming; Saturday and Sunday, at Antone Herman place, Verboort.

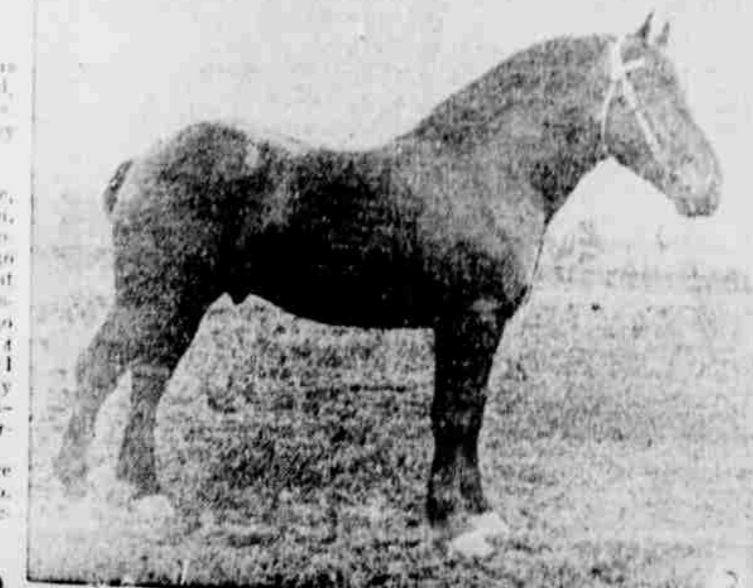
TERMS:—Single service, \$10, payable at service; insurance, \$15, payable when mare is known to be in foal, colts to stand and suck, \$20.

HILLSBORO SHIRE HORSE CO. Owners.  
J. E. FOORD, Groom.

W. O. Donelson  
UNDERTAKER  
Calls attended night or day.  
Chapel and Parlors.  
Hillsboro, Oregon

PROMPT WORK HONEST WORK  
THOS. H. BROWN  
Contractor  
Farmers' Phone 242  
PLASTER BRICK AND CEMENT  
Hillsboro, Ore.  
Do not forget to ask for a Suller when you want a good 19 cent smoke—no "cough dust" in the Schiller. 121f

No. 74697 No. 52496  
HUGO  
Imported Registered Percheron, seed 3 years weight 1800; color bay; gentle, fine build, just the horse for farm and draft purposes. Imported by A. C. Ruby in 1909. Bred by Let Anna, of province of Danton, France.  
SEASON OF 1912  
Monday, 10 a. m. to 2 p. m., Watts place, Coes Creek; 4 to 6 p. m. Monday to 8 a. m. Tuesday, Gale's City; Tuesday noon, Scholl's place, on Ernest David's place; 2 to 4 p. m. Tuesday to 9 a. m. Wednesday, at Hines; 4 p. m. Wednesday to 8 a. m. Thursday, Jake Milne place, North Plains; 10 a. m. to 2 p. m. Thursday, at Hillsboro; 4 p. m. Thursday to 9 a. m. Friday, at Michel's place, South of Blooming; Friday noon at Corraline; Friday evening to Monday morning, at Peter Iyer place, Verboort.  
TERMS:—Single service, \$10; to insure with foal, \$15; colts to stand and suck, \$20. Care to prevent but not responsible for accidents.  
WM. F. HOFFMAN  
VEREORT HORSE CO.



THE STORE OF QUALITY  
Vaught's  
GROCERY  
Hillsboro, Ore.  
Second St. Both Phones

Hoffman's Sawmill  
is sawing from the best timber in Washington county. The finest  
Rough and Dressed Lumber  
always on hand. Estimates on Buildings, Flooring, Rusts, Ceilings—all kinds of finished lumber for house material. We deliver.  
Phone: Pac. States, Glencoe Central, 37  
PETER HOFFMAN, Bacon, Oregon

Now for the Seashore  
Via The  
SOUTHERN PACIFIC  
TILLAMOOK & NEWPORT BEACHES  
Seaside fares from the principal western cities to Tillamook & Seaside  
FROM TO FARE TO FARE  
Portland 5 days \$6.00 Tillamook Beach 4 4.00  
Oregon City 4 4.00  
Astoria 4 4.00  
Astoria 4 4.00  
Cannon Beach 4 4.00  
Eugene 4 4.00  
Roseburg 4 4.00  
Medford 4 4.00  
Astoria 4 4.00  
Tickets to above points on sale daily, and all seasons, with corresponding low fares from other points. Wheel chair tickets are also on sale from the above points.  
SEASIDE EXCURSION TRAINS ON THE S. P. R.  
Leaves Astoria at 1:30 p. m., Corvallis 2:30 p. m., and connects with S. P. trains to Seaside and other points.  
Cut on our coast agents for tickets. There is Oregon, a beautiful illustrated booklet describing winter vacation resorts. Write to JOHN M. SCOTT, General Passenger Agent, Portland, Oregon.  
Attend the B. P. O. E. E. K. convention, Portland, July 5-15. Low fares to all points from June to September.

THE KEY TO SUCCESS  
The Oregon Home Builders  
Builders of Homes  
Our  
"PROFIT-SHARING" Investment Certificates are REAL Money Makers  
Send for Booklet  
604 56 Corbett Bldg. Portland Ore  
Chuck food, bone, shell and grit, at Grover's. 52-1f  
Argus and Journal, \$2.25.

We Are Always On Hand  
to attend to you at once when you come to show you the exclusive cloths from which we make our clothing.  
To show you the different models that fashion has approved. To take your measure accurately for the suit you will surely order if smartness and distinction appeared appeal to you.  
CHRIST WUEST.  
The Tailor.  
Phone, Main 863  
A good brood mare, with colts to trade for a horse that can be put into steady work.—Adam Reil, Centerville, or Corvallis, Route 1, Telephone Farmers 552.  
Coffee Club Cook Books are on sale at the following places—The Rest Room, Mrs. Bath's Millinery, Vaught's Grocery.