

NATIONAL SHOWS TO OCCUR IN JANUARY

New York, Chicago Events to Be Greatest Ever.

SURPRISES ARE IN STORE

Nearly 100 Makes of Autos to Be Shown at Grand Central Palace and Coliseum.

NEW YORK, N. Y., Dec. 16.—As a result of intensive activity during the past few weeks, preparations for the 23rd National Automobile show are making great headway. Reports from the factory districts early this month are to the effect that work on the 1923 models to be displayed at the exhibition are completed and that all arrangements have been made to ship the cars to New York. Cooperation in the selection among manufacturers, dealers and the show management has been a big factor in arranging the preliminaries for the big exhibition of motor cars.

With 81 different makes of automobiles and more than 100 accessory manufacturers listed as exhibitors, the National Automobile shows of New York and Chicago will be the biggest automobile exhibitions ever presented in this country.

The New York show will be held January 6 to 13, and the Chicago exposition in the Coliseum and First Regiment armory will be held January 27 to February 3. Both displays are under the direction of the National Automobile chamber of commerce. The Grand Central Palace will again house the New York show in its entirety.

Accessories to Be Displayed.

One of the features of the National show this year is the wonderful array of accessories. The total number of devices, big and little, that go to help the motorist to not only run his car, but also in many instances to add to its appearance, breaks all records. Undoubtedly there will be many new things on view, but like car builders, the accessory manufacturers keep their plans under cover until the show opens.

For the show the four floors of the palace that will be occupied contain 200,000 square feet of space, as each floor is equal to a city square block in area. For the most part the cars will occupy the two lower floors, but it has been found necessary because of the great demand for space, to put several of the cars on the third floor.

Bigger, brighter, more interesting than ever is the promise that is held out for the 1923 show. It's the same promise that was made for the show of a decade ago, and every other annual display before and since. And strangely enough the yearly display invariably has lived up to the optimistic predictions of its sponsors. Since the far-gone days in the early part of the century no National Automobile show has ever failed to provide a wealth of entertainment not only for the man who drove a car, but equally so for the man who hoped to own a full house is assured. It has always been so; it probably always will be. The annual review is an assured success and its appeal is as wide as the country itself.

The visitor to the show of 1923 may go with the consciousness that he is for the first time in a homage to the world's greatest industry the production of motor cars and their accessories has gradually crept up from the figures of early years until at the present time, the industry has gone into a leading place in the country's commercial standing.

Surprises May Be Given.

Whether or not the coming exposition will disclose anything revolutionary or radical will remain a secret until the doors of the palace are thrown open on January 6. In every factory throughout the country for months past the brains of the automotive industry have been engaged in the design and production of models for 1923. Away from the drop forges, the whirring wheels, and from all the distractions of a noisy plant, the designers have evolved ideas of refinements that will mark the cars to be shown.

It is conceded that the coming display will be dominated by the close types of cars. More the motorist is evincing his desire for the acme of travel typified by the limousine, the sedan, coupe and the various combinations of these three standard types put out with more or less whimsical names. Protection from the weather when protection is needed, explains the great and growing popularity of the closed car, taken in conjunction with improved body design which in balmy weather permits of all the advantages of an open model.

Each year has brought greater luxury of interior finishes and upholstery, to such a pronounced degree that even the lowest priced cars have tended to make no apology for their lack of riding comfort. It is safe to assume that the models in the palace show will demonstrate superiority over all previous efforts in this line.

The accessory makers confine their new products to no particular time of the year, but most important ones are usually reserved for the National show. Many hundreds of accessory exhibitors are already listed, and the motorist will find a journey among the displays quite as fascinating and informative as in previous years. And he is certain to find some surprises.

Trade Is Confident.

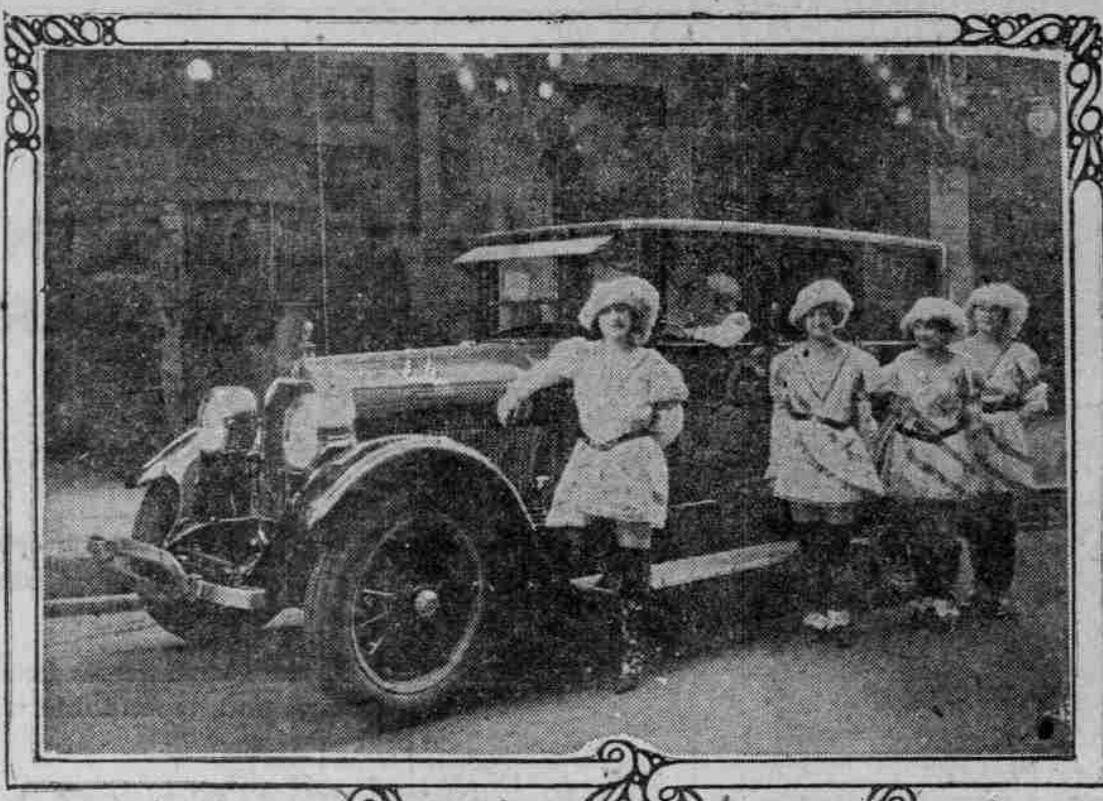
The automotive industry faces the coming year with extreme optimism and confidence. For this industry, at least, the period of reconstruction has practically ended. Despite their universal utility, motor cars were the first to react to the conditions caused by the high cost of materials and labor during the war period.

Car prices have been stabilized, even though slowly. The industry is just closing a year that has been amazing in the volume of production and sales, and there is every indication that the coming year will start and end in a blaze of glory. Not only are general conditions indicative of continued prosperity, but there is every evidence that the public is in a frame of mind to accept the modern car as the highest expression of design that may be expected for some time to come.

The following makes of cars will be exhibited at the shows:

American, Anderson, Apperson, Auburn, Roamer, Rotary Six, Buick, Cadillac, Case, Chalmers, Chandler, Chevrolet, Cleveland, Chrysler, Cole, Columbia, Hatfield, Courier, Crawford, Daimler, Davis, Detroit-Elliott, Duesenberg, Durant, Durant, Earl, Egan, Essex, Franklin, Gardner, Gray, H. C. S., Handley-Knight, Haynes, Hudson, Hupmobile,

GIRL USHERS ENJOY PEERLESS PLACED AT THEIR DISPOSAL BY W. R. DELAY.



HANDSOME SEDAN AND GIRLS OF THE PEOPLES THEATER WHO MADE USE OF IT LAST WEEK. Marion Davies, star in the photoplay, "When Knighthood Was in Flower," which was a big drawing card at the Peoples theater for three weeks, drives a Peerless automobile and is an ardent booster for the W. R. Delay Motor company. Peerless and Velle distributors, should last week place one of the new 1923 Peerless sedans at the disposal of the Peoples force. The photograph shows the car in front of the theater and the girl ushers in costumes similar to one used by Miss Davies in the picture.

CONPO SYSTEM PUT IN LOCAL WILLARD STATION INSTALLS NEW PLANT.

Constant Potential Method Made Use of in Latest Equipment for Recharging.

Installation of the new Conpo system for recharging storage batteries for automobiles was completed last week by the Portland Storage Battery company, local Willard battery agents, the company being the first to install this new method in the city of Portland. The Conpo system is declared to charge batteries much more rapidly and more evenly and efficiently than the old systems which have been used.

MOST DRIVERS ARE CAREFUL

Senator Arthur Capper Speaks Good Word for Motorists.

WASHINGTON, D. C., Dec. 16.—Tribute to the high standing which motorists of the United States enjoy in their respective communities is paid by Senator Arthur Capper of Kansas in a communication received from him by the National Motorists' association.

Senator Capper's letter is as follows: Mr. Raymond Beck, field secretary, National Motorists' association, Edmonds building, Washington, D. C.

Ashland Camp Praised by Eastern Article.

Grounds Declared as Near Perfect as Can Be.

ASHLAND, Or., Dec. 16.—(Special.)—Praises of the Pacific coast auto tourist parks in general and of the local camp, in particular are sung by Robert I. Snadrig in a special article written recently for the Cleveland Plaindealer.

After telling of the thousands of tourists who spent the summer on the main transcontinental highways, the comparatively smooth pikes of the middle west, the winding passes of the Rockies and the broad boulevards of Oregon, California, and Washington, Snadrig states that this is only the beginning, and that the following years will see such a hegin as Mohammed never dreamed of and beside which the wanderings of Asiatias of Goths and Vandals and Huns are but as the moving of urban families from one house to another.

Savage Trade Character Is Movie Actor.

Seven-Year-Old Indian Boy Plays Double Role.

LOS ANGELES, Dec. 16.—Not many youngsters are privileged to play important roles in both the worlds of industry and of entertainment. Such a distinction, however, is vouchsafed to a full-blooded Indian boy, known as Little Heap to an army of people throughout the west because of his ardent wish to have a trade character.

TRY-OUT HIGHLY PLEASING

But Cop Was Around and Driver Thinks it Over in Jail.

SAN FRANCISCO, Dec. 16.—Ralph Arnot, vice-president of the Haskett Pacific company, coast distributors of the Remy generator, was in the city for a try-out of the new generator.

CHART SHOWS EXPANSION OF AUTOMOBILE INDUSTRY.

REGISTRATION OF MOTOR CARS AND TRUCKS IN THE UNITED STATES (1906-1922)

Year	Registration
1906	10,448,633
1907	8,128,960
1908	7,585,446
1909	6,446,637
1910	5,245,565
1911	4,383,340
1912	3,571,354
1913	2,445,565
1914	1,713,359
1915	1,258,062
1916	1,025,628
1917	1,125,062
1918	1,125,062
1919	1,125,062
1920	1,125,062
1921	1,125,062
1922	1,125,062

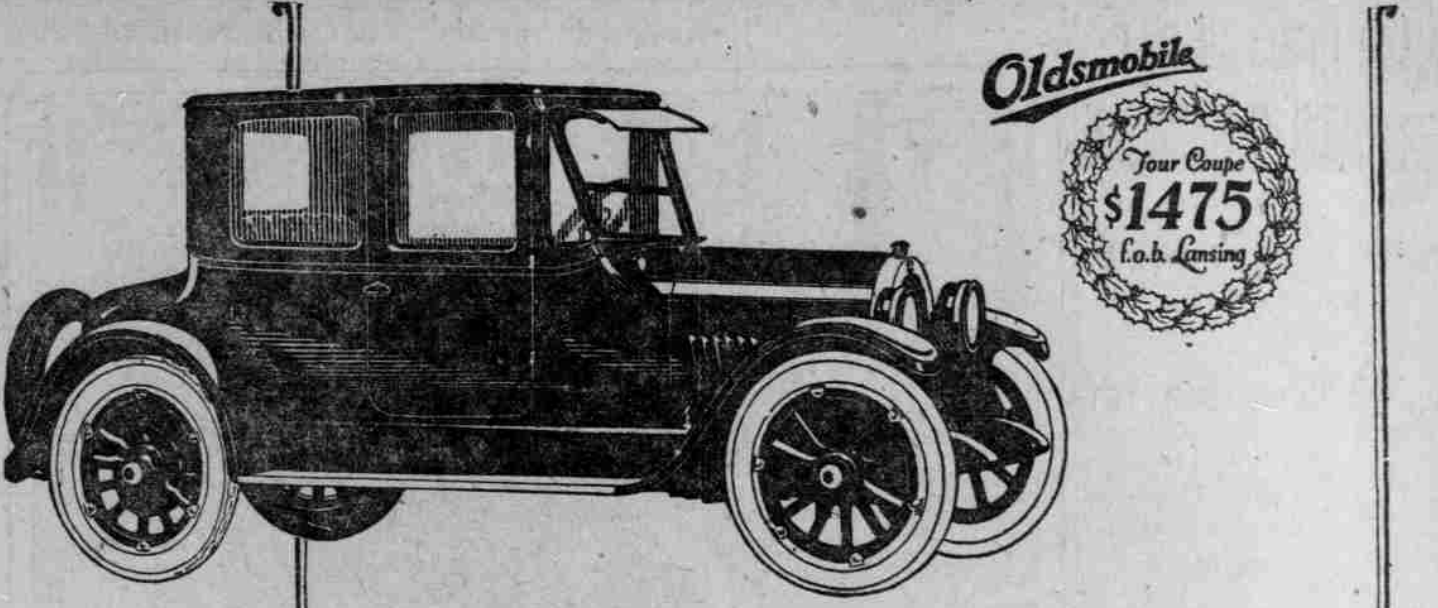
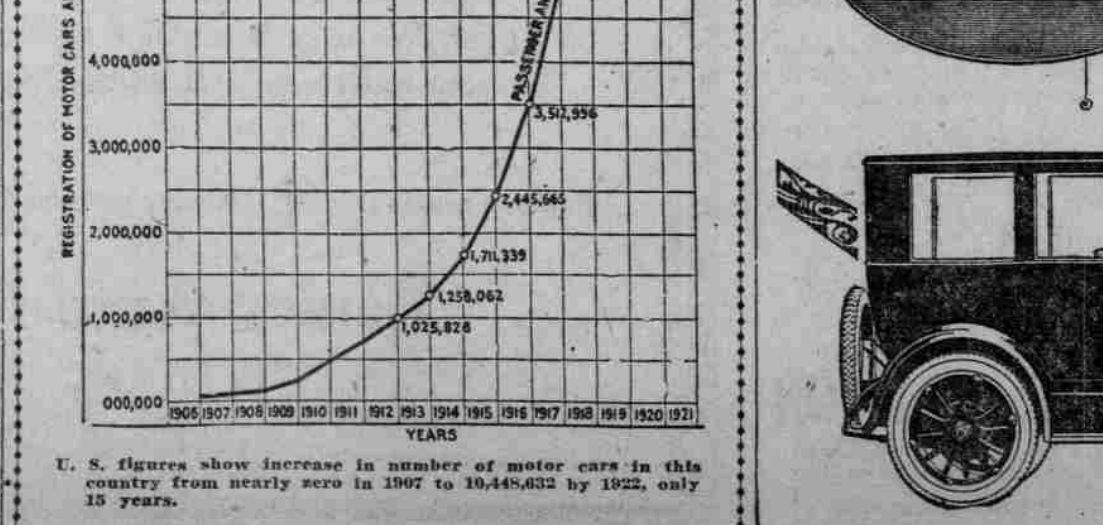
Builders of Oakland have made it their ideal to produce the finest light-six in the world. The choice of Remy as Oakland's starting, lighting, and ignition system is, therefore, thoroughly sound and logical.

REMY ELECTRIC COMPANY
ANDERSON, INDIANA

Authorized Remy Service and genuine Remy parts may be secured from United Motors Service Branches and Authorized Distributors.

The New Oakland Six

PORTLAND
NORTHWEST OAKLAND CO.
PARK & COUCH STS.



Oldsmobile
Four Coupe
\$1475
C. O. Lansing

An Ideal Christmas Gift—
The Oldsmobile Four Coupe

A Christmas gift for the entire family—the Oldsmobile Four Coupe! Here is a useful gift which will be appreciated every day of the year. It is a dependable, powerful and comfortable closed car at the lowest price quoted by Oldsmobile in eighteen years. Powered with the famous Four engine and splendidly appointed, it provides ideal transportation for four grown-up people.

The unusually complete equipment includes comfortable auxiliary seat, parcel compartment inside, large luggage space in rear, walnut finish instrument board, drum head lights and cowl lights, windshield visor and wiper, cowl ventilator, door locks, heater, dome light and walnut steering wheel.

Come in and let us explain our plan which will deliver this rich gift to your home Christmas morning.

There are fourteen Oldsmobile body types in Fours and Eights with a price range from \$955 to \$2025

OLDS MOTOR WORKS LANSING, MICHIGAN
Division of General Motors Corporation

Oldsmobile Co. of Oregon
Broadway at Couch Streets.
Broadway 2270.

OLDSMOBILE
A PRODUCT OF GENERAL MOTORS

Petting Party Technique Undergoing Change.

Danger of Old Method Reduced by Girl Doing Driving.

SPOKANE, Wash., Dec. 16.—Considerable publicity given hereabout to the prevalence and danger of "petting parties" conducted in speeding autos on highways has resulted in a change in "technique," according to Lloyd Crowe, assistant in charge of the tourist bureau.

The original style, in which the man drove with one hand, is passe now, Crowe says.

It was a relic of the old buggy days.

The new style is for the girl to drive, leaving the party of the second part entirely free-handed.

And the accident rate isn't much higher, either.

How about a new car?



Associated Only With the Best

TUTZ, always, has been accorded a place among cars of admitted merit, just as it has been recognized for the distinction it gives those who can claim its ownership.

Aside from its remarkable performance, there is a certain fascination about it that no other car quite approaches.

The feel of the wheel—the conscious mastery of every emergency—the assurance of speed and power that enable it to set the pace and hold it—give an added thrill to travel in a Stutz.

And in the enclosed as well as in the open cars this wealth of ability is yours in a Stutz.

Touring Car . . . \$2640 Roadster . . . \$2450
Sportster . . . \$2790 Coupe . . . \$3490
All Prices f. o. b. Indianapolis

STUTZ MOTOR CAR COMPANY OF AMERICA, Inc.
Indianapolis, Indiana, U. S. A.

Autost Motor Sales Co.
Tenth and Salmon Streets
Phone Main 3237

The Gift Appreciated!

The Clymer Windshield Spotlight

Every Motorist Wants One

REMEMBER! This is the sensational new Spot-light that is superior to all others because of its patented revolutionary features. Points like a pistol, from WITHIN the car; the handle only 4 inches from your hand! That's why this windshield light has made the clamped-on kind out-of-date! So insist on Clymer, and DELIGHT THE RECIPIENT!

\$13.50—Installed Before or After Christmas!

All Automobile and Accessory Dealers

Wolff-Heyburn Co.
Ninth and Gibson DISTRIBUTORS Phone Bdwy. 6126