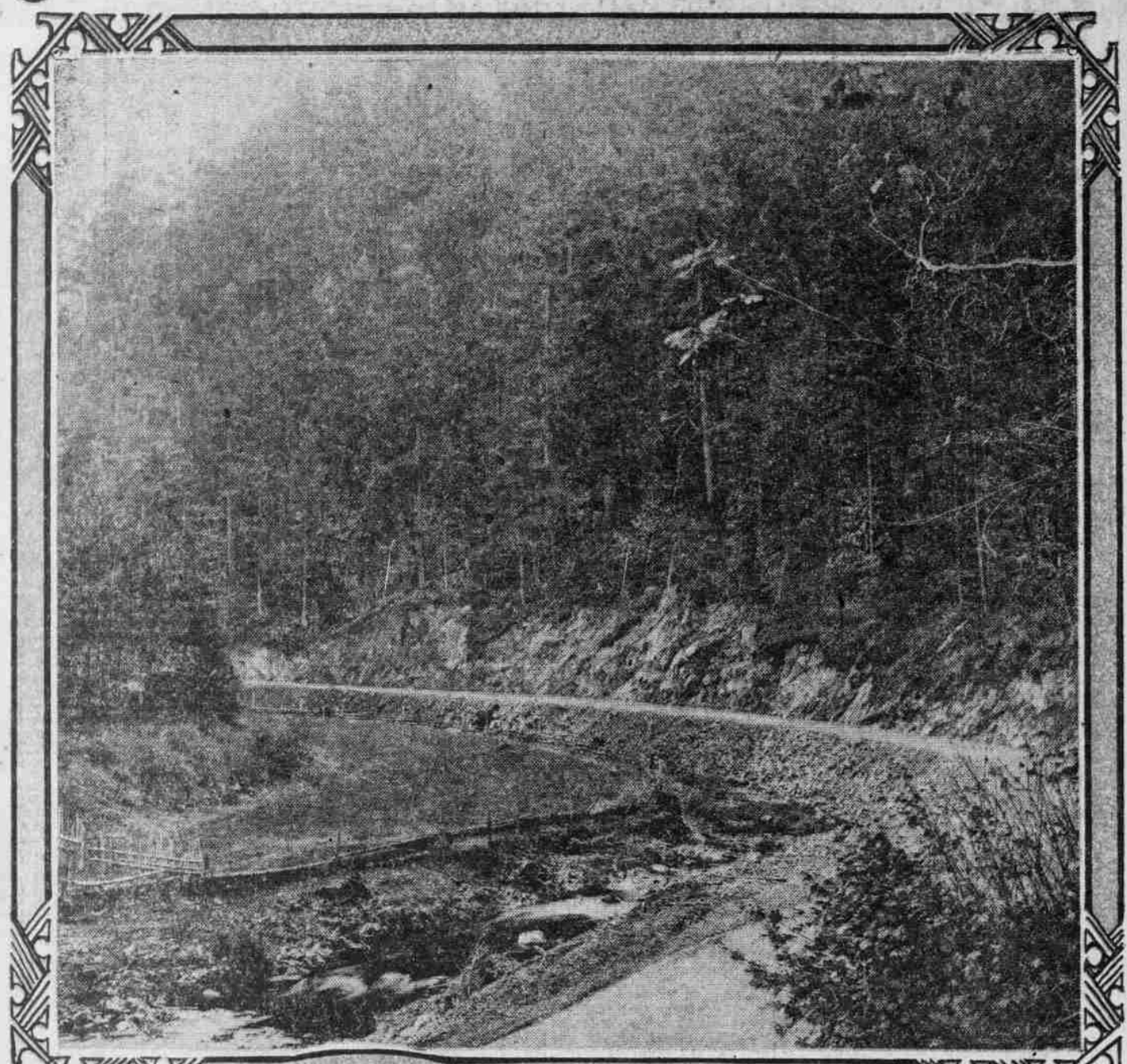




Pacific Highway Now Splendid Winter Road



New Pavement Along Canyon Creek, Douglas County.

Photos A.H. Pratico



Where Pacific Highway Follows Bank of Myrtle Creek.

BY H. W. LYMAN.

WHILE the goal set a year ago of having the Pacific highway in Oregon entirely paved before the end of 1922 will not be realized, construction operations have now reached such an advanced stage that this main route through Oregon from north to south is in splendid condition, in the best condition that remains so throughout the entire winter.

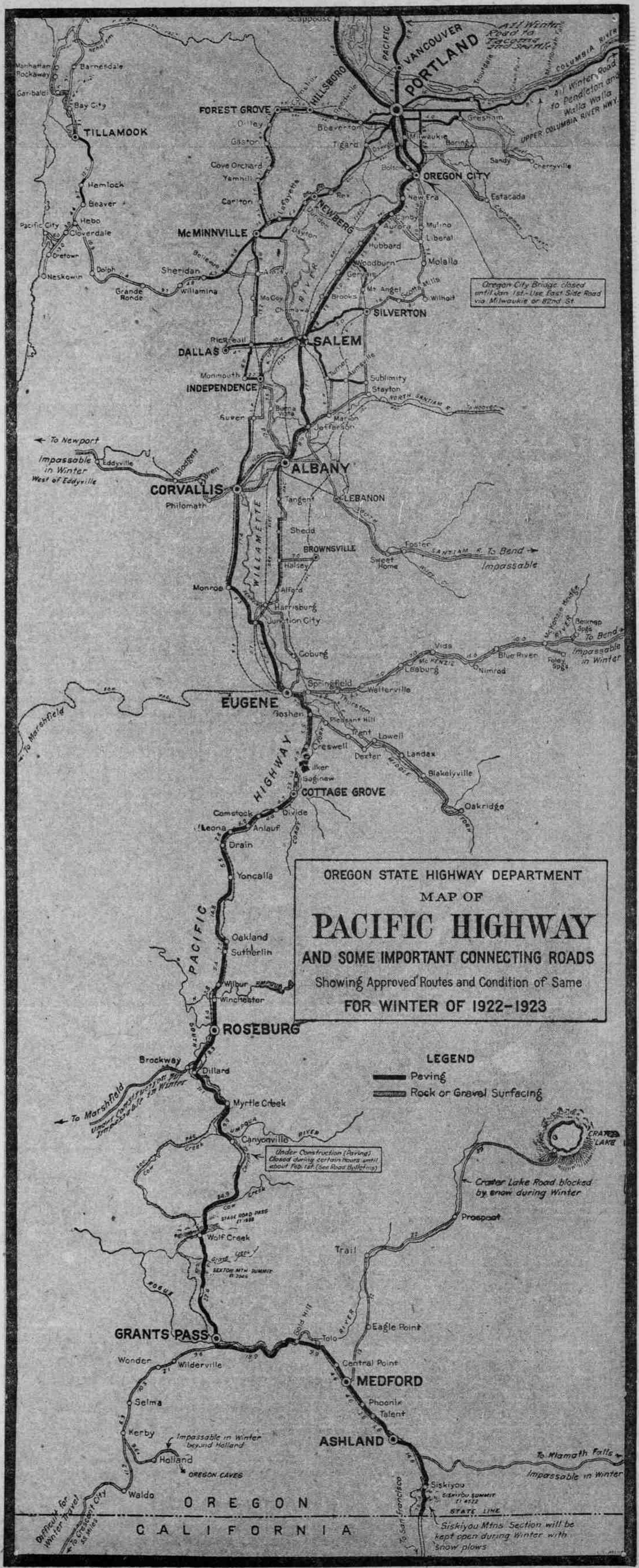
Following its practice of several years past in publishing in the late fall each year an accurate map showing the condition of the Pacific highway in Oregon for the forthcoming winter season, the Oregonian herewith presents such a map showing the approved Pacific highway route through Oregon and its condition for the winter of 1922-1923. As has been the case in the past the Oregonian is indebted to the Oregon state highway department for the map, which was prepared at the office of the department and thoroughly up-to-date.

The map is so clear and comprehensive that it seems hardly necessary to accompany it with any description of the highway. However, for those who may not be familiar with the road a few words of explanation may be given.

The approved route southward this year is, roughly, via the east side Pacific highway to Albany, thence over the county road to Corvallis, thence south over the west side Pacific highway to Eugene, and thence over the one main route to the state line. On the entire stretch of 345 miles from the interstate bridge to the California line the only unpaved portion of any magnitude is the 12-mile stretch from Albany to Corvallis. A number of short gaps, ranging from a hundred yards or so to three miles in length, still remain unpaved, and in a couple of places paving operations are not completed, but the road is usable with a few restrictions.

From Portland to Oregon City, two paved routes are provided, the river road through Milwaukie, which is the main route, or the Eighty-Second street route. The regular Pacific highway route from Portland south is via the west side to West Linn and across the river to Oregon City, but this is not now in use because of bridge construction at the latter point. The new bridge will be ready about the first of the year.

From Oregon City southward the



(Continued on Page 2)