

SPEED TRAPS DANE OF AUTO TOURIST

Washington Rural Districts Over-Enforce Law.

DRIVERS TABOO SECTIONS

Club Official Says Officers in Country Drive Away Travel by Motorcycle Banditry.

SEATTLE, Wash., Nov. 25.—One thing that serves more than any other to "make the joy out of life" for the automobile tourist in Washington today is the so-called "speed trap," which is found in so many rural communities and small cities.

The use of the "speed trap" club for exacting money from motorists has grown to such proportions that some of the smaller villages in Washington are able to pay practically all their municipal expenses with money obtained by holding up motorists.

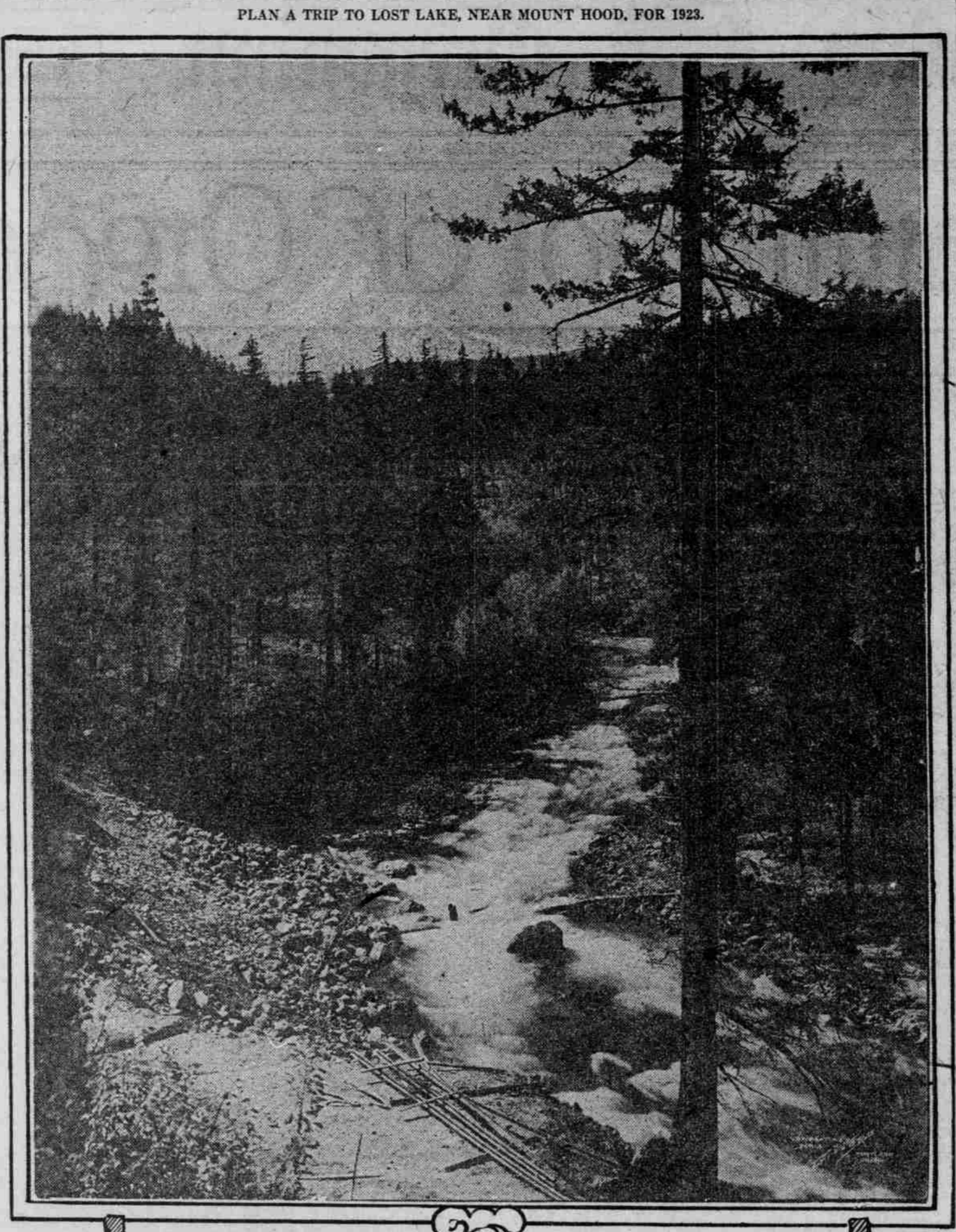
Original Purpose Worthy. "Speed traps" were originally designed for a very worthy purpose, that of catching the real speed demon and bringing him to book.

Notorious Trap Broken Up. The outstanding offenders in this state during the past year were the speed traps operated at Silver Lake, just south of Everett, which were completely broken up through the efforts of this club and splendid co-operation of the state highway patrol.

Without doubt, the most offensive speed trap has been that at Union Gap, four miles south of Yakima. Every effort has been made by the directors of this club to have the officials at Union Gap at least use discretion and courtesy with the visiting motorists.

Yakima Worst Place. Without doubt, the most offensive speed trap has been that at Union Gap, four miles south of Yakima. Every effort has been made by the directors of this club to have the officials at Union Gap at least use discretion and courtesy with the visiting motorists.

No Defense for Motorist. The automobilist who is caught in one of these iniquitous traps has no defense. The justice of the peace or other magistrate before whom he is taken presumes him guilty in advance and no amount of evidence has ever proven sufficient to obtain a "not guilty" verdict in such a case.



Beautiful view of Oregon's mountains and the west fork of the Hood river, taken from the new road from the city of Hood River to Lost Lake.

BILLBOARDS DRAW FIRE

DEFACEMENT OF HIGHWAYS COUNTRYWIDE ISSUE. Protests From All Parts of Land Against Signs Received at National Headquarters.

CHICAGO, Cal., Nov. 25.—The first automobile accident occurred in Chicago just 20 years ago. Here is the way a local newspaper (The Chicago Record) told of it:

Barley Car Announced. KALAMAZOO, Mich., Nov. 25.—The Barley Motor Car company of Kalamazoo, makers of a high priced car, has decided to enter the medium priced field.

Another Dodge Brothers Delivery Car Purchased by Local Firm. Special panel delivery recently delivered by Braley, Graham & Child, Inc., local Dodge Bros. distributors, to Lipman, Wolfe & Co.

AUTO CAPITAL IS HUGE

MONEY IN MOTOR INDUSTRY TWICE NATIONAL BANKS. Excepting Agricultural Industry, Represents Greatest Business in United States.

CONNEERSVILLE, Ind., Nov. 25.—Frank E. Anstead, president of the Lexington Motor company, Connersville, Ind., in an address here before a group of bankers, caused considerable surprise when he said:

Ignition Wire Connections. To insure a firm contact and prevent wires breaking off, every ignition wire should have a terminal soldered at each end.

These cars are \$1,000 retail trade units responsible for the distribution of automotive products.

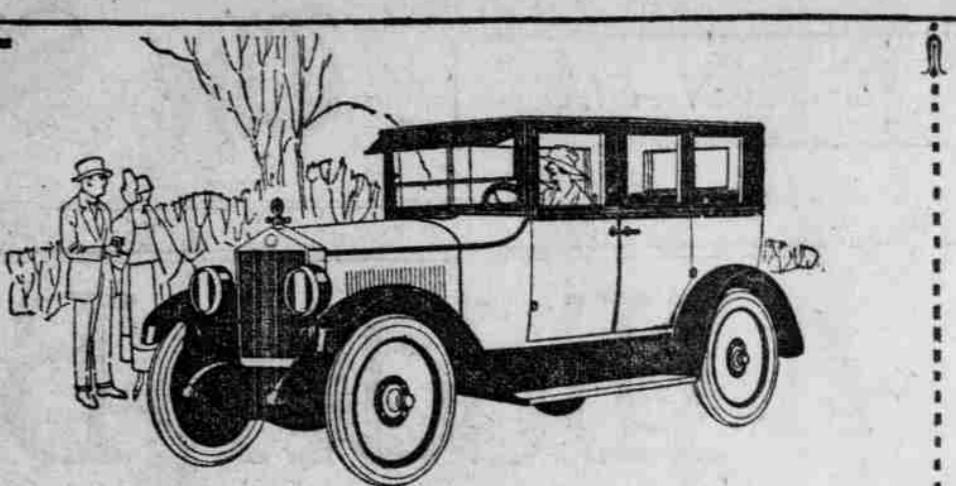
ANOTHER DODGE BROTHERS DELIVERY CAR PURCHASED BY LOCAL FIRM.

Special panel delivery recently delivered by Braley, Graham & Child, Inc., local Dodge Bros. distributors, to Lipman, Wolfe & Co.

These cars are \$1,000 retail trade units responsible for the distribution of automotive products.

These cars are \$1,000 retail trade units responsible for the distribution of automotive products.

These cars are \$1,000 retail trade units responsible for the distribution of automotive products.



The New Six 40 MOON Sedan \$1695 A car for those who seek distinction

At first sight you'll admit this new Moon Sedan has personality—quick, vivid, piquant, daring. In no sense a makeshift—but a generously proportioned, finely built car that measures up in every way—as to beauty of design, finish and mechanical units—to sedans that ordinarily sell at a thousand dollars more than the open model.

Other Moon Models: Six-40 five-passenger Touring, \$1295; Six-48 seven- and five-passenger Touring, \$1785, and a Six-48 seven-passenger Sedan.

SOME TERRITORY OPEN FOR GOOD DEALERS. PRASP MOTOR CAR CO., Fourteenth at Couch Broadway 3974

DODGE BROTHERS USED CARS

People have gotten over the idea that "used cars" and "abused cars" are synonymous. Every car seen on the street is a Used Car. They now realize that it is purely a matter of judgment on their part; that is, judgment in choosing a dependable dealer to buy from.

AUTO SALES ON UPGRADE

CHICAGO, Nov. 25.—A \$500,000 automobile bank and warehouse, an institution unique in Chicago motor circles, is being projected in this city.

LATIN AMERICAN MOTORCAR TRADE DECLARED STABLE

DETROIT, Nov. 25.—Automotive sales conditions in Latin America are on the up grade, according to J. D. Mooney, vice-president and general manager of the General Motors Export company, who recently visited the Cadillac Motor Car company in Detroit.

Official Westinghouse Service

For the Following Factory Equipped Cars: Hupmobile, Pierce Arrow, Chalmers, Gardner, Case, Velie, Chandler, Locomobile, Dort, Allen, King, National. We are the only authorized Westinghouse Electrical Service Station in Portland using only genuine parts.

Sunset Electric Co. Ninth and Glisan