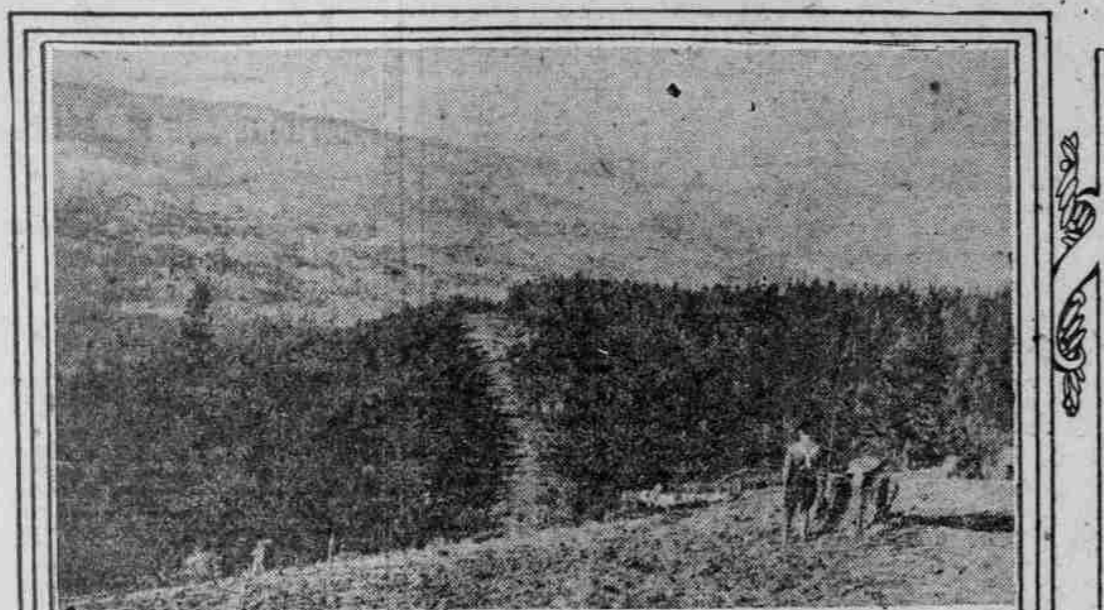


POWER LINE IS EXTENDED ACROSS TWO RANGES OF MOUNTAINS TO WENATCHEE

Route of Northern Pacific Railway Is Followed From Eagle Gorge to Cle Elum and Remainder Is Through Wild Country by Most Direct Way Regardless of Numerous Obstacles Encountered.



Looking North From The Summit Along Transmission Line Toward Wenatchee



Building Dike For Mill Tower On Summit Of Wenatchee Range

PUGET SOUND BUREAU, Seattle, Wash., Oct. 28.—(Special).—Working over the summit of two mountain ranges, 30 miles of pole towers and many of the steel towers have been set up on the high-power transmission line that the Puget Sound Power & Light company is building from its White river hydro-electric plant in King county to the city of Wenatchee.

Chess and Checkers

E. H. BRYANT, Editor. Contributions or games, analyses, problems and items of interest, criticism and club notes solicited. Send direct to 183 East Third-Fifth street, Portland Chess and Checker club building.

Chess and Checkers problems and solutions. Includes diagrams of chessboards and checkersboards with piece positions and move instructions.

Chess and Checkers solutions. Provides answers and explanations for the problems presented in the previous section.

ENGINEER DESCRIBES WONDERS OF TRIP DOWN RIVER FROM UMATILLA TO PORTLAND IN EARLY MORNING

View From Cab of Locomotive Includes Glimpses of Sagebrush, With Change to Green of Lower Columbia—Mountains Standing Like Sentinels Over Country, and Beautiful Waterfalls Dropping Like Veils Across Front of Cliffs.



BY GEORGE J. FOSTER. CLIMB up, reader, and seat yourself comfortably on the left side of engine 193; one of the O-W's long-legged racers. Put on your gloves so you will not feel the hot pipes as you steady yourself when our steed of steel and steam swaggers around the curves.

Fill your pipe for a five-hour joyride while you vision through the bright window before you Oregon's wonderful moving-picture show. It is 1 A. M. at Umatilla, and the old moon's yellow arm ahead in the west seems as a signal of caution on the run before us.

Through sand and sage, o'er wide moorland, Whirls youth and age "neath guiding hand. Far ahead, the electric headlight cleaves a silvery lane through Luna's weird forest of shadowy shapes.

WILD LIFE SEEN. A jackrabbit scurries across the trail with a hungry cry in pursuit, and you hope the pilot of the engine will drop the pole between them and decide the race in favor of the leaping bunny.

VOTING PLAN EXPLAINED

CITY AUDITOR FUNK DETAILS PREFERENTIAL SYSTEM.

Persons Not Familiar With Rule Governing Commissionerships Are Advised of Procedure.

Because many voters in Portland are not familiar with the preferential system that is used in the election of city commissioners, City Auditor Funk yesterday issued a statement explaining the manner in which first, second and third choice votes are cast.

For city commissioner, two to be elected. You may vote two first, two second and two third choice, but no candidate shall have more than one vote first, second or third choice.

RECKLESS DRIVER JAILED

Woman's Dislike to See Car Pass Lands Her in Hospital.

Dislike of Mrs. William Helming, 1626 Fifteenth street, to see another car pass her own landed her in St. Vincent's hospital yesterday afternoon with cuts about the head and both knees badly cut and bruised.

CABLE LETTERS REVIVED

Week-End Service From Portland To Be Resumed November 1.

Cable letter and week-end cable letter service from Portland will be resumed November 1 by the Western Union, according to word received by Superintendent Jones yesterday.

EUGENE PIONEER COUPLE CELEBRATE GOLDEN WEDDING DAY



Left to right—Mrs. Maude Condon, Frank L. Wilkins, F. M. Wilkins, Mrs. Gladys McCready, Mrs. F. M. Wilkins, Mrs. Nina McCormack, Mrs. Lucia Moore.

EUGENE, Or., Oct. 28.—(Special).—Mr. and Mrs. F. M. Wilkins of Eugene celebrated their golden wedding anniversary Friday when their five children from different parts of the country and a large company of their friends gathered at home at the corner of Ninth avenue West and Charnelton street.

CHURCH ANNEX ASSURED

ADDITION TO TEMPLE BETH ISRAEL PROMISED.

Sabbath School Quarters Costing About \$200,000 Are to Be Provided Shortly.

A new Sabbath school annex to Temple Beth Israel cooling in the neighborhood of \$200,000 is to be erected as soon as plans can be prepared, according to announcement yesterday.

The new structure is to be so designed that it may be used as a section of a new and larger main building if future need should arise.

Plans for the Sabbath school building were prepared by Sutton & Whitney provide for a structure covering 50 by 100 feet directly in the rear of the present temple.

On, on in the perfume of the balm trees. Under the starry white eyes of the dogwoods do we fill with ever-rising moments of pleasure at the grace of our position as a locomotive engineer.

The Dalles Reached Safely. An hour and 20 minutes boring a hole in the black night. Fifty miles through tawny, waving slopes with shaggy, overhanging eyebrows that scowl with displeasure as the train tumbles over a high wall of water where the night-hawk of the Dalles tows mail and baggage into the open doors of the head cars.

Through Bonneville and on to Dodson, where a lone freight train causes whirling eddies of dust as the clacking trucks of No. 5 hurly by. And then looms before us St. Peter's dome. The exclamation point of enthusiasm as the pennant flares above great upwards to the heavenly heights.

The scenes shift rapidly. Behold! There, boiling downwards in a caataract of crystal food, Oneonta falls reaches her fingers of mist to the cab window, to be kissed by her knights of the rail. And the honey of her carress still lingers on the lips as the flushed forehead is cooled by the sweet breath of Oneonta's gorge.

Then old Multnomah's fleecy veil appears and whips aside in the soft air to disclose the face of a long-ago princess.

On, on in the perfume of the balm trees. Under the starry white eyes of the dogwoods do we fill with ever-rising moments of pleasure at the grace of our position as a locomotive engineer.

The Dalles Reached Safely. An hour and 20 minutes boring a hole in the black night. Fifty miles through tawny, waving slopes with shaggy, overhanging eyebrows that scowl with displeasure as the train tumbles over a high wall of water where the night-hawk of the Dalles tows mail and baggage into the open doors of the head cars.

Through Bonneville and on to Dodson, where a lone freight train causes whirling eddies of dust as the clacking trucks of No. 5 hurly by. And then looms before us St. Peter's dome. The exclamation point of enthusiasm as the pennant flares above great upwards to the heavenly heights.

The scenes shift rapidly. Behold! There, boiling downwards in a caataract of crystal food, Oneonta falls reaches her fingers of mist to the cab window, to be kissed by her knights of the rail. And the honey of her carress still lingers on the lips as the flushed forehead is cooled by the sweet breath of Oneonta's gorge.

Then old Multnomah's fleecy veil appears and whips aside in the soft air to disclose the face of a long-ago princess.

On, on in the perfume of the balm trees. Under the starry white eyes of the dogwoods do we fill with ever-rising moments of pleasure at the grace of our position as a locomotive engineer.

The Dalles Reached Safely. An hour and 20 minutes boring a hole in the black night. Fifty miles through tawny, waving slopes with shaggy, overhanging eyebrows that scowl with displeasure as the train tumbles over a high wall of water where the night-hawk of the Dalles tows mail and baggage into the open doors of the head cars.

Through Bonneville and on to Dodson, where a lone freight train causes whirling eddies of dust as the clacking trucks of No. 5 hurly by. And then looms before us St. Peter's dome. The exclamation point of enthusiasm as the pennant flares above great upwards to the heavenly heights.

The scenes shift rapidly. Behold! There, boiling downwards in a caataract of crystal food, Oneonta falls reaches her fingers of mist to the cab window, to be kissed by her knights of the rail. And the honey of her carress still lingers on the lips as the flushed forehead is cooled by the sweet breath of Oneonta's gorge.