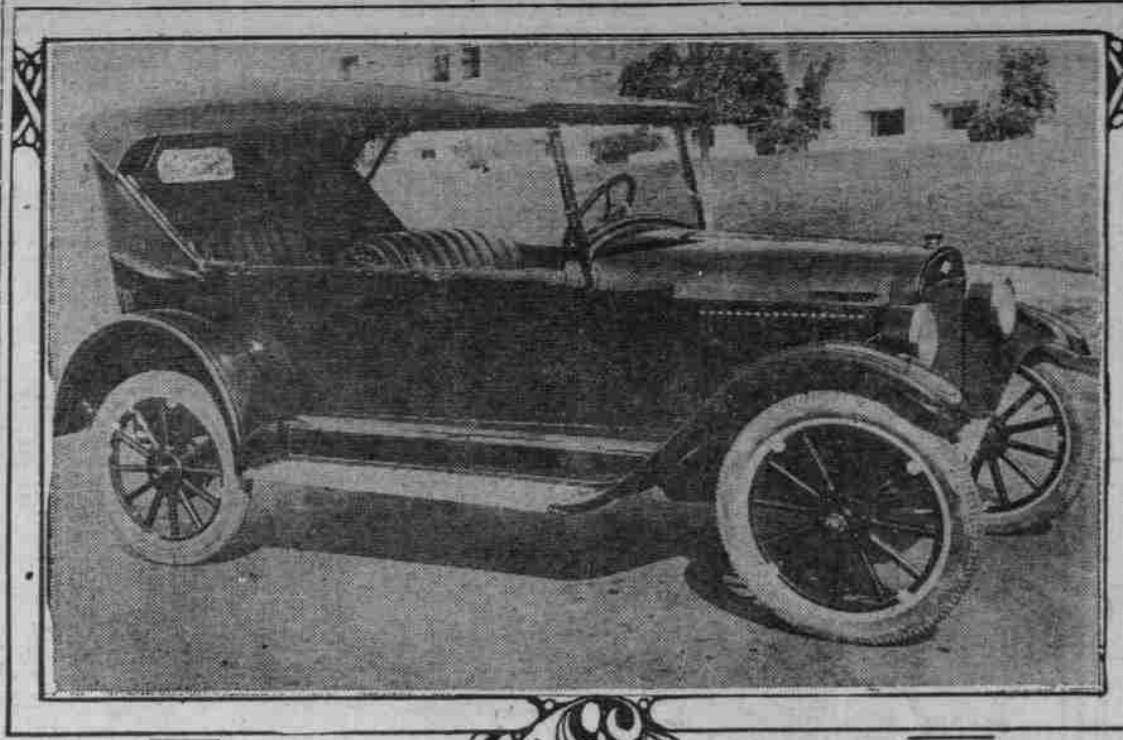


FIRST PHOTO OF NEW MODEL "490" CHEVROLET, DUE IN PORTLAND THIS WEEK.



NEWEST PRODUCT OF GENERAL MOTORS UNIT SHOWS MANY CHANGES AND IMPROVEMENTS OVER PREVIOUS MODELS.

Although the new model Chevrolet car has not yet appeared in Portland, a set of photographs of the car, together with a description of the changes over the previous model, was received last week by the Fields Motor Car company.

Marshfield-Bandon (via Seven Devils route)—Mountain road rough but passable with careful driving. Bandon-Denmark-Sixes river—Gravelled road in good condition.

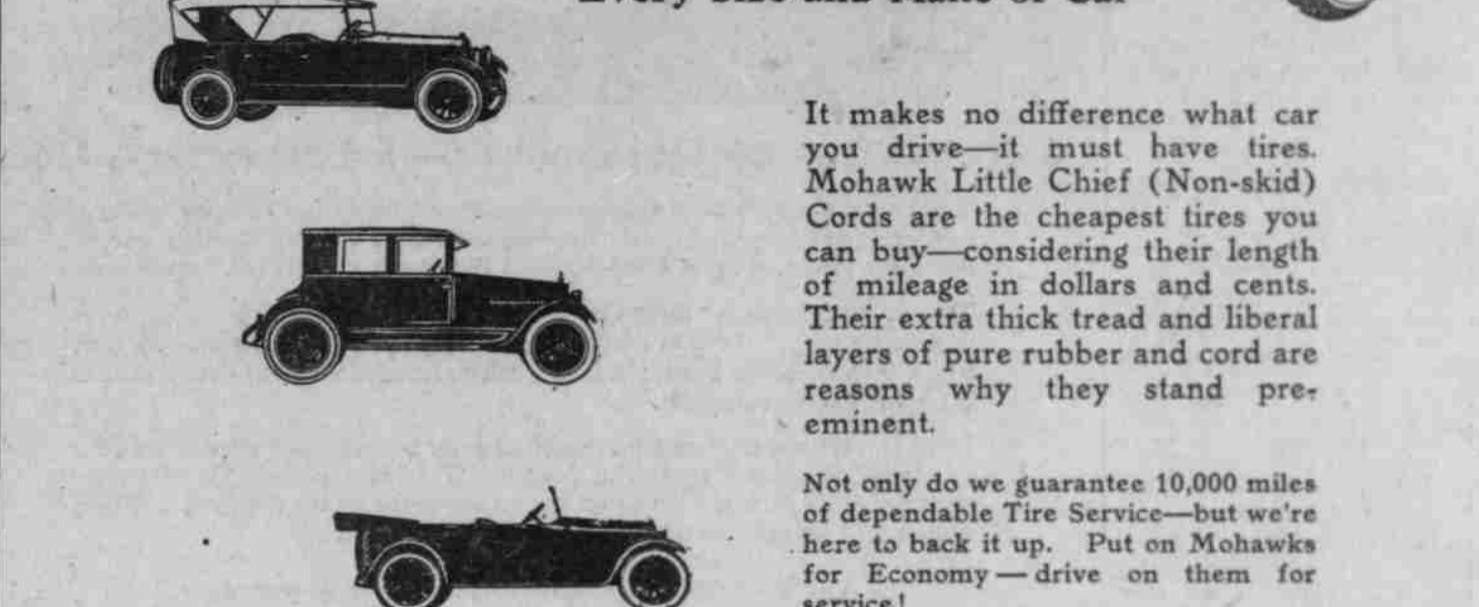
Central Oregon Highway. Burns-Crane—Macadamized and in good condition. Under construction; steep descent, drive carefully.

Willamette Valley-Florence Highway. Open and passable to Blachly by both Low Pass and High Pass routes. Low Pass route is rough, but in good condition.

Portland-Newberg—Paving work under way. Highway closed to traffic from 8 A. M. to 2 P. M. Two detours necessary.

Lakelse-North Bend—Sandy part way but safely passable. New ferry in operation at North Bend. North Bend—Marshfield—Coquille—Favard.

Rolls-Royce or Ford-- Here's Genuine Economy for Every Size and Make of Car



MOHAWK PRICES Little Chief (Non-Skid) CORDS. Table listing various tire sizes and their prices, such as 30x3 1/2 for \$11.00 and 32x4 1/2 for \$20.93.

A light medium duty engine. This type of motor will meet the requirements laid down in the rules for the 125,000 sweepstakes races to be held in Detroit next year for displacement type runabouts.

PACKARD TURNS OUT MANY "GOLD CUP." Full Pressure Oil Feed is Used; Carburetor is of Airplane Type.

Earl Cabriolet 2 cars in 1. Capacity and compact design match business needs. With full equipment, \$1395. Judged by retail sales, the Earl Cabriolet at \$1395 meets the personal transportation needs of many professional and business men exactly.

DURANT Just a Real Good Car. PACIFIC MOTOR COMPANY Broadway at Flanders—Broadway 7916

Earl Motors, Inc. 529-531 WASHINGTON, NEAR SIXTEENTH BROADWAY 1614